

Converting Colors

YIQ(170.5900, 48.3690, 9.9770)

Have a look what the booklet for
YIQ(170.5900, 48.3690, 9.9770)
contains.

YIQ(170.5900, 48.3690, 9.9770)	3
<i>Conversions</i>	4
<i>Details</i>	6
<i>Harmonies</i>	12
<i>Previews</i>	24
<i>Color Blindness Simulation</i>	28
<i>CSS Examples</i>	31

Color

**YIQ(170.5900, 48.3690,
9.9770)**

Conversions

Conversions Part 1

Format	Color
Hex	DF9786
RGB	223, 151, 134
RGB Percent	87%, 59%, 53%
CMY	0.1253, 0.4079, 0.4743
CMYK	0.00, 0.32, 0.40, 0.13
HSL	11°, 58%, 70%
HSV	11°, 40%, 87%
XYZ	45.8125, 39.5406, 27.7909
YIQ	170.5900, 48.3690, 9.9770

Conversions

Conversions Part 2

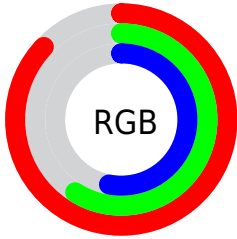
Format	Color
R _Y B	223, 155, 134
Decimal	14653318
CIE Lab	69.14, 25.04, 19.93
CIE LCh	69, 32.004, 38.514
Yxy	39.5406, 0.4049, 0.3495
Android (android.graphics.Color)	4292843398 (0xFFDF9786)
YUV	170.5900, -18.0389, 45.9636
Hunter-Lab	62.8813, 20.0047, 17.8133

Details

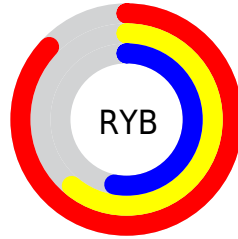
The YIQ color **170.5900, 48.3690, 9.9770** is a light color, and the websafe version is hex **CC9999**. A complement of this color would be **186.4100, -48.3690, -9.9770**, and the grayscale version is **171.0000, -0.0000, -0.0000**.

A 20% lighter version of the original color is **218.4850, 35.3030, 4.4790**, and **117.3230, 44.7470, 9.5390** is the 20% darker color. If you saturate the color by 10%, you get **157.5160, 60.3810, 12.5490**, and if you desaturate by 10%, it is **183.6640, 36.3570, 7.4050**.

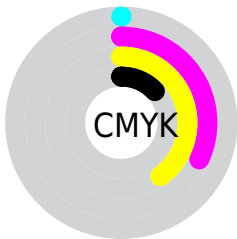
Distribution



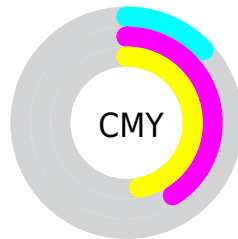
- Red (87%)
- Green (59%)
- Blue (53%)



- Red (87%)
- Yellow (61%)
- Blue (53%)



- Cyan (0%)
- Magenta (32%)
- Yellow (40%)
- Black (13%)



- Cyan (13%)
- Magenta (41%)
- Yellow (47%)

Brightness & Saturation Gradients

These gradients show how the YIQ color 170.5900, 48.3690, 9.9770 changes by changing the brightness by 10 percent. The first figure shows a shift by +10% for each color and the second figure -10%.

Similar to the brightness gradients but the following saturation gradients show a change of the YIQ color 170.5900, 48.3690, 9.9770 by changing the saturation by 10% instead.

170.5900, 48.3690,
9.9770

170.5900, 48.3690,
9.9770

255.0000, -0.0000,
-0.0000

143.8070, 46.2600,
9.6520

218.4850, 35.3030,
4.4790

117.3230, 44.7470,
9.5390

238.1130, 18.6150,
-1.4570

92.2410, 42.0420,
9.0020

253.6320, 3.8520,
-3.7320

67.2730, 39.0160,
8.7760

44.3050, 35.9900,
8.5500

20.2770, 33.1930,
9.6810

10.5790, 20.5390,

7.7310

■ 0.0000, 0.0000,
0.0000

■ 170.5900, 48.3690,
9.9770

■ 170.5900, 48.3690,
9.9770

■ 157.5160, 60.3810,
12.5490

■ 183.6640, 36.3570,
7.4050

■ 144.3280, 72.7140,
14.8100

■ 196.8520, 24.0240,
5.1440

■ 131.2540, 84.7260,
17.3820

■ 209.9260, 12.0120,
2.5720

■ 118.1800, 96.7380,
19.9540

■ 223.0000, -0.0000,
-0.0000

■ 105.1060,
108.7500, 22.5260

■ 236.1880,
-12.3330, -2.2610

■ 91.9180, 121.0830,
24.7870

■ 245.4320,
-19.0720, -6.7840

■ 91.3310, 121.3580,
25.3100

Harmonies

Analogous

The Analogous color harmony consists of three colors that are next to each other on the color wheel.



172.2170, 42.5900, 21.1020



170.5900, 48.3690, 9.9770



168.9230, 42.4570, -4.0310

Triad

The Triadic color harmony groups three colors that are evenly spaced from another and form a triangle on the color wheel.



170.5900, 48.3690, 9.9770



158.2650, -29.5680, -25.8240



167.4250, -34.3890, 12.0030

Complementary

The Complementary color scheme is a pair of colors which are on the opposite of each other on the color wheel.



170.5900, 48.3690, 9.9770



186.4100, -48.3690, -9.9770

Split Complementary

Split-complementary colors differ from the complementary color scheme. The scheme consists of three colors, the original color and two neighbors of the complement color.



159.0960, -61.8040, -3.2760



170.5900, 48.3690, 9.9770



153.1770, -58.4990, -24.6350

Square

The Square scheme is like the rectangle color scheme, but the four colors are evenly spaced on the color wheel.



170.5900, 48.3690, 9.9770



163.0590, 0.3710, -23.2530



151.9060, -73.4930, -17.2130



171.8590, -3.0760, 22.7160

Rectangle

The Rectangle color scheme consists of four colors that form a rectangle on the color wheel.



170.5900, 48.3690, 9.9770



166.9060, 31.9590, -12.0170



151.9060, -73.4930, -17.2130



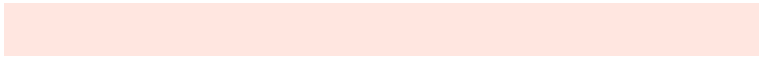
164.7010, -44.1540, 7.2540

Sweetspot

The Sweet Spot groups the original color and five complimentary colors.



170.5900, 48.3690, 9.9770



236.7910, 16.8260, 3.4340



168.9330, 29.6110, 41.5710



117.1430, 9.9030, 2.2470



0.0000, 0.0000, 0.0000



128.0000, -0.0000, -0.0000

Same Dimension

The Same Dimension uses a secret algorithm to generate beautiful new colors.



170.5900, 48.3690, 9.9770



182.9790, 66.3870, 13.8350



196.4180, 36.2690, -13.0350



105.4630, 6.0060, 1.2860



71.9950, 95.8210, 20.0530



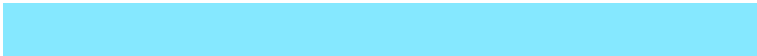
19.6350, 26.1330, 5.4690

Inverse Universe

The Inverse Universe completely reimagines the original color for something new.



186.4100, -48.3690, -9.9770



205.0210, -66.3870, -13.8350



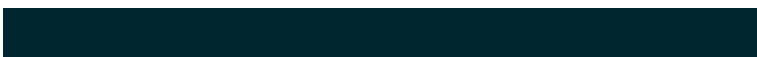
160.5820, -36.2690, 13.0350



107.5370, -6.0060, -1.2860



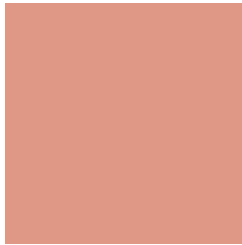
103.4180, -95.5460, -19.5300



28.3650, -26.1330, -5.4690

Previews

White Background



This preview shows how the YIQ color 170.5900, 48.3690, 9.9770 looks on a white background.

Color Contrast Check

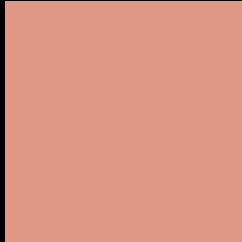
Large Text (above 18pt) WCAG AA × Fail

Any Text WCAG AA × Fail

Large Text (above 18pt) WCAG AAA × Fail

Any Text WCAG AAA × Fail

Black Background



This preview shows how the YIQ color 170.5900, 48.3690, 9.9770 looks on a black background.

Color Contrast Check

Large Text (above 18pt) WCAG AA ✓ Pass

Any Text WCAG AA ✓ Pass

Large Text (above 18pt) WCAG AAA ✓ Pass

Any Text WCAG AAA ✓ Pass

If you want to check with other color combinations, try the [Color Contrast Checker](#).

YIQ 170.5900, 48.3690, 9.9770

Background



This preview shows how black text looks on a background with the YIQ color 170.5900, 48.3690, 9.9770.



This preview shows how white text looks on a background with the YIQ color 170.5900, 48.3690,

Color Blindness Simulation

Color vision deficiency is a very complex topic, and I could not describe the different causes any better than Wikipedia does, so if you want to learn more, you should check out their [article about color blindness](#).

Dichromacy



Original Color

170.5900, 48.3690, 9.9770

Protanopia

168.7270, 13.7100, -6.1780

Deuteranopia

169.3440, 31.0860, -1.6980



Tritanopia

171.6900, 42.6360, 20.2680

Trichromacy



Original Color

170.5900, 48.3690, 9.9770

Protanomaly

169.0600, 26.1340, -0.0580

Deuteranomaly

169.8010, 37.2290, 2.6130

Tritanomaly

170.9520, 44.6540, 16.7340

Monochromacy



Original Color

170.5900, 48.3690, 9.9770

Achromatopsia

171.0000, -0.0000, -0.0000

Achromatomaly

171.0900, 17.4220, 3.6460

CSS Examples

Text

The CSS property to change the color of the text to YIQ 170.5900, 48.3690, 9.9770 is called "color". The color property can be set on classes, ids or directly on the HTML element.

This example shows how text in the color `rgb(223, 151, 134)` looks like.

```
.text, #text, p{  
    color:rgb(223, 151, 134)  
}
```

If you want to add a text shadow in that color use the text-shadow property, you can generate a text shadow directly with our [CSS Text Shadow Generator](#).

Here you see how black text with a 4 pixel rgb(223, 151, 134) colored shadow looks like.

```
.shadow{ text-shadow: 4px 4px 2px rgb(223, 151, 134) }
```

Border

The CSS property to change the border of an element to YIQ 170.5900, 48.3690, 9.9770 is called "border". The border property can be set on classes, ids or directly on the HTML element.

This example shows the color as border, it can be applied via the CSS property "border" or "border-color".

```
.border, #border, table{ border:4px solid rgb(223, 151, 134) }
```


If only the border color should be changed use the property `border-color`.

```
.border{ border-color:rgb(223, 151, 134) }
```

If you want to add a box shadow in that color use:

Here you see how a box with a 4 pixel `rgb(223, 151, 134)` colored shadow looks like.

```
.boxshadow{ -moz-box-shadow:4px 4px 4px  
4px rgb(223, 151, 134); -webkit-box-  
shadow:4px 4px 4px 4px rgb(223, 151, 134);  
box-shadow:4px 4px 4px 4px rgb(223, 151,  
134) }
```

Background

The CSS property to change the background color of an element to YIQ 170.5900, 48.3690, 9.9770 is called "background". The background property can be set on classes, ids or directly on the HTML element.

```
.background, #background, body{  
background: rgb(223, 151, 134) }
```

If only the background color should be changed can be used:

```
.background{ background-color: rgb(223,  
151, 134) }
```

This example shows the color as background, it is applied via the CSS property "background".

To optimize and compress your CSS code, you can use our [online CSS compressor and optimizer](#) based on csstidy. If you want to create a linear or radial gradient as background or border, check our [CSS Gradient Generator](#).

Hey! You found this booklet interesting? Support Converting Colors with the new Membership Option!

The pro membership hides all ads, plus gives you double the colors in the color bucket, and more awesome pro features!

[Learn more, Memberships starting at \\$2.50/m!](#)

**Follow me
on Twitter!**

@ConvertingColor