

Converting Colors

YIQ(170.7460, 12.6990, 6.6430)

Have a look what the booklet for
YIQ(170.7460, 12.6990, 6.6430)
contains.

YIQ(170.7460, 12.6990, 6.6430)	3
<i>Conversions</i>	4
<i>Details</i>	6
<i>Harmonies</i>	12
<i>Previews</i>	24
<i>Color Blindness Simulation</i>	28
<i>CSS Examples</i>	31

Color

**YIQ(170.7460, 12.6990,
6.6430)**

Conversions

Conversions Part 1

Format	Color
Hex	BBA3A8
RGB	187, 163, 168
RGB Percent	73%, 64%, 66%
CMY	0.2666, 0.3608, 0.3411
CMYK	0.00, 0.13, 0.10, 0.27
HSL	347°, 15%, 69%
HSV	347°, 13%, 73%
XYZ	40.6617, 39.5851, 42.5492
YIQ	170.7460, 12.6990, 6.6430

Conversions

Conversions Part 2

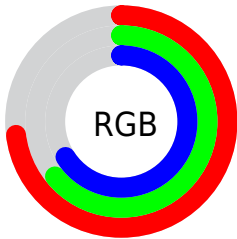
Format	Color
RYB	187, 163, 168
Decimal	12297128
CIELab	69.17, 9.62, 0.63
CIElCh	69, 9.645, 3.745
Yxy	39.5851, 0.3311, 0.3224
Android (android.graphics.Color)	4290487208 (0xFFBBA3A8)
YUV	170.7460, -1.3538, 14.2548
Hunter-Lab	62.9167, 5.2563, 3.9452

Details

The YIQ color **170.7460, 12.6990, 6.6430** is a light color, and the websafe version is hex **999999**. A complement of this color would be **179.2540, -12.6990, -6.6430**, and the grayscale version is **171.0000, -0.0000, -0.0000**.

A 20% lighter version of the original color is **226.0450, 13.2950, 6.8550**, and **118.4470, 12.1030, 6.4310** is the 20% darker color. If you saturate the color by 10%, you get **157.8830, 22.7390, 11.9150**, and if you desaturate by 10%, it is **183.6090, 2.6590, 1.3710**.

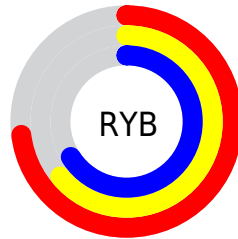
Distribution



Red (73%)

Green (64%)

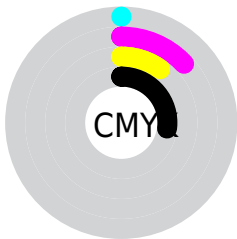
Blue (66%)



Red (73%)

Yellow (64%)

Blue (66%)

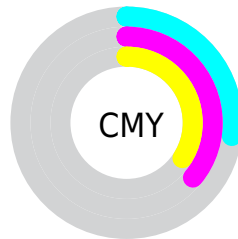


Cyan (0%)

Magenta (13%)

Yellow (10%)

Black (27%)



Cyan (27%)

Magenta (36%)

Yellow (34%)

Brightness & Saturation Gradients

These gradients show how the YIQ color 170.7460, 12.6990, 6.6430 changes by changing the brightness by 10 percent. The first figure shows a shift by +10% for each color and the second figure -10%.

Similar to the brightness gradients but the following saturation gradients show a change of the YIQ color 170.7460, 12.6990, 6.6430 by changing the saturation by 10% instead.

■ 170.7460, 12.6990,
6.6430

■ 170.7460, 12.6990,
6.6430

■ 255.0000, -0.0000,
-0.0000

■ 144.4470, 12.1030,
6.4310

■ 226.0450, 13.2950,
6.8550

■ 118.4470, 12.1030,
6.4310

■ 249.3750, 3.4380,
3.7740

■ 93.8490, 10.9110,
6.0070

■ 70.4360, 10.6360,
5.4840

■ 47.2510, 9.7190,
5.5830

■ 26.5390, 8.8480,
4.8480

■ 4.4850, 8.9400,

3.1800

0.0000, 0.0000,
0.0000

170.7460, 12.6990,
6.6430

170.7460, 12.6990,
6.6430

157.8830, 22.7390,
11.9150

183.6090, 2.6590,
1.3710

145.6070, 32.5040,
16.6640

195.8850, -7.1060,
-3.3780

132.8580, 42.2230,
22.2470

208.6340,
-16.8250, -8.9610

119.9950, 52.2630,
27.5190

221.4970,
-26.8650, -14.2330

107.1320, 62.3030,
32.7910

233.1860,
-36.3550, -18.4590

■ 94.8560, 72.0680,
37.5400

■ 234.6680,
-40.5280, -14.4160

■ 81.9930, 82.1080,
42.8120

■ 69.2440, 91.8270,
48.3950

■ 60.3590, 98.9330,
51.7730

Harmonies

Analogous

The Analogous color harmony consists of three colors that are next to each other on the color wheel.



170.5650, 5.9590, 7.6470



170.7460, 12.6990, 6.6430



170.7200, 15.5880, 3.8440

Triad

The Triadic color harmony groups three colors that are evenly spaced from another and form a triangle on the color wheel.



170.7460, 12.6990, 6.6430



167.2680, 1.8810, -6.5590



167.3880, -15.7720, -0.5080

Complementary

The Complementary color scheme is a pair of colors which are on the opposite of each other on the color wheel.



170.7460, 12.6990, 6.6430



179.2540, -12.6990, -6.6430

Split Complementary

Split-complementary colors differ from the complementary color scheme. The scheme consists of three colors, the original color and two neighbors of the complement color.



166.3830, -17.3760, -4.4800



170.7460, 12.6990, 6.6430



166.2500, -6.8760, -7.5480

Square

The Square scheme is like the rectangle color scheme, but the four colors are evenly spaced on the color wheel.



170.7460, 12.6990, 6.6430



168.8560, 9.0330, -4.0150



166.0690, -13.6160, -6.5440



168.5460, -10.2250, 3.5910

Rectangle

The Rectangle color scheme consists of four colors that form a rectangle on the color wheel.



170.7460, 12.6990, 6.6430



169.8400, 15.1300, 1.1300



166.0690, -13.6160, -6.5440



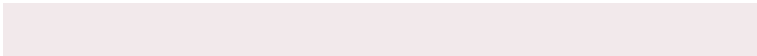
167.2630, -16.9180, -1.7660

Sweetspot

The Sweet Spot groups the original color and five complimentary colors.



170.7460, 12.6990, 6.6430



235.9190, 4.7220, 2.5300



171.4170, 3.6200, 11.4920



118.0220, 2.9340, 1.8940



250.0000, 0.0000, 0.0000



122.0000, 0.0000, -0.0000

Same Dimension

The Same Dimension uses a secret algorithm to generate beautiful new colors.



170.7460, 12.6990, 6.6430



217.6760, 18.8880, 10.1200



174.2850, 12.3790, 1.4270



87.9190, 4.7220, 2.5300



51.0040, 83.5750, 43.7590



9.9530, 16.5500, 8.4380

Inverse Universe

The Inverse Universe completely reimagines the original color for something new.



170.7460, 12.6990, 6.6430



217.6760, 18.8880, 10.1200



175.7150, -12.3790, -1.4270



87.9190, 4.7220, 2.5300



51.0040, 83.5750, 43.7590



9.9530, 16.5500, 8.4380

Previews

White Background



This preview shows how the YIQ color 170.7460, 12.6990, 6.6430 looks on a white background.

Color Contrast Check

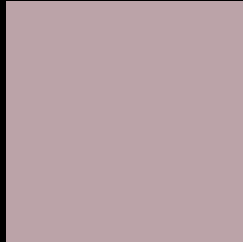
Large Text (above 18pt) WCAG AA × Fail

Any Text WCAG AA × Fail

Large Text (above 18pt) WCAG AAA × Fail

Any Text WCAG AAA × Fail

Black Background



This preview shows how the YIQ color 170.7460, 12.6990, 6.6430 looks on a black background.

Color Contrast Check

Large Text (above 18pt) WCAG AA ✓ Pass

Any Text WCAG AA ✓ Pass

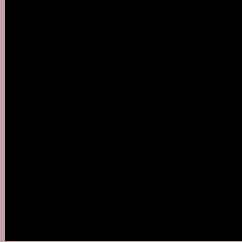
Large Text (above 18pt) WCAG AAA ✓ Pass

Any Text WCAG AAA ✓ Pass

If you want to check with other color combinations, try the [Color Contrast Checker](#).

YIQ 170.7460, 12.6990, 6.6430

Background



This preview shows how black text looks on a background with the YIQ color 170.7460, 12.6990, 6.6430.



This preview shows how white text looks on a background with the YIQ color 170.7460, 12.6990,

Color Blindness Simulation

Color vision deficiency is a very complex topic, and I could not describe the different causes any better than Wikipedia does, so if you want to learn more, you should check out their [article about color blindness](#).

Dichromacy



Original Color

170.7460, 12.6990, 6.6430

Protanopia

169.2390, 0.8250, 1.5690

Deuteranopia

171.0340, 11.8280, 5.9080



Tritanopia

171.2560, 11.3230, 9.5550

Trichromacy



Original Color

170.7460, 12.6990, 6.6430

Protanomaly

169.7450, 5.2720, 3.5760

Deuteranomaly

171.0340, 11.8280, 5.9080

Tritanomaly

170.9140, 12.2860, 8.6220

Monochromacy



Original Color

170.7460, 12.6990, 6.6430

Achromatopsia

171.0000, -0.0000, -0.0000

Achromatomaly

170.9190, 4.7220, 2.5300

CSS Examples

Text

The CSS property to change the color of the text to YIQ 170.7460, 12.6990, 6.6430 is called "color". The color property can be set on classes, ids or directly on the HTML element.

This example shows how text in the color `rgb(187, 163, 168)` looks like.

```
.text, #text, p{  
    color:rgb(187, 163, 168)  
}
```

If you want to add a text shadow in that color use the text-shadow property, you can generate a text shadow directly with our [CSS Text Shadow Generator](#).

Here you see how black text with a 4 pixel rgb(187, 163, 168) colored shadow looks like.

```
.shadow{ text-shadow: 4px 4px 2px rgb(187, 163, 168) }
```

Border

The CSS property to change the border of an element to YIQ 170.7460, 12.6990, 6.6430 is called "border". The border property can be set on classes, ids or directly on the HTML element.

This example shows the color as border, it can be applied via the CSS property "border" or "border-color".

```
.border, #border, table{ border:4px solid rgb(187, 163, 168) }
```


If only the border color should be changed use the property `border-color`.

```
.border{ border-color:rgb(187, 163, 168) }
```

If you want to add a box shadow in that color use:

Here you see how a box with a 4 pixel `rgb(187, 163, 168)` colored shadow looks like.

```
.boxshadow{ -moz-box-shadow:4px 4px 4px  
4px rgb(187, 163, 168); -webkit-box-  
shadow:4px 4px 4px 4px rgb(187, 163, 168);  
box-shadow:4px 4px 4px 4px rgb(187, 163,  
168) }
```

Background

The CSS property to change the background color of an element to YIQ 170.7460, 12.6990, 6.6430 is called "background". The background property can be set on classes, ids or directly on the HTML element.

```
.background, #background, body{  
background: rgb(187, 163, 168) }
```

If only the background color should be changed can be used:

```
.background{ background-color: rgb(187,  
163, 168) }
```

This example shows the color as background, it is applied via the CSS property "background".

To optimize and compress your CSS code, you can use our [online CSS compressor and optimizer](#) based on csstidy. If you want to create a linear or radial gradient as background or border, check our [CSS Gradient Generator](#).

Hey! You found this booklet interesting? Support Converting Colors with the new Membership Option!

The pro membership hides all ads, plus gives you double the colors in the color bucket, and more awesome pro features!

[Learn more, Memberships starting at \\$2.50/m!](#)

**Follow me
on Twitter!**

@ConvertingColor