

Converting Colors

YIQ(171.5930, 62.6230, 38.0070)

Have a look what the booklet for
YIQ(171.5930, 62.6230, 38.0070)
contains.

YIQ(171.5930, 62.6230, 38.0070)	3
<i>Conversions</i>	4
<i>Details</i>	6
<i>Harmonies</i>	12
<i>Previews</i>	24
<i>Color Blindness Simulation</i>	28
<i>CSS Examples</i>	31

Color

**YIQ(171.5930, 62.6230,
38.0070)**

Conversions

Conversions Part 1

Format	Color
Hex	FF82A7
RGB	255, 130, 167
RGB Percent	100%, 51%, 65%
CMY	0.0000, 0.4904, 0.3449
CMYK	0.00, 0.49, 0.34, 0.00
HSL	342°, 100%, 75%
HSV	342°, 49%, 100%
XYZ	56.1959, 40.0034, 41.3460
YIQ	171.5930, 62.6230, 38.0070

Conversions

Conversions Part 2

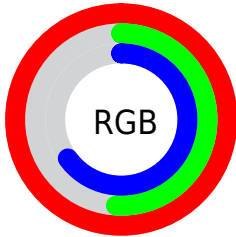
Format	Color
RYB	255, 130, 167
Decimal	16745127
CIELab	69.47, 51.24, 2.54
CIELCh	69, 51.304, 2.834
Yxy	40.0034, 0.4086, 0.2908
Android (android.graphics.Color)	4294935207 (0xFFFF82A7)
YUV	171.5930, -2.2643, 73.1479
Hunter-Lab	63.2482, 47.9123, 5.5153

Details

The YIQ color **171.5930, 62.6230, 38.0070** is a light color, and the websafe version is hex **FF6699**. A complement of this color would be **213.4070, -62.6230, -38.0070**, and the grayscale version is **172.0000, -0.0000, -0.0000**.

A 20% lighter version of the original color is **210.7350, 29.5680, 25.8240**, and **116.0270, 58.4050, 37.3570** is the 20% darker color. If you saturate the color by 10%, you get **154.2790, 75.5510, 46.0070**, and if you desaturate by 10%, it is **188.3200, 49.9700, 30.5300**.

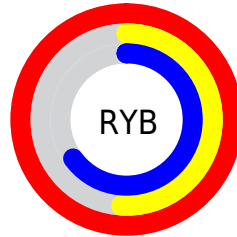
Distribution



Red (100%)

Green (51%)

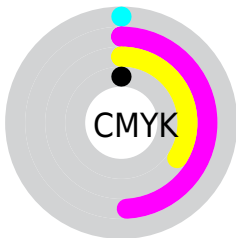
Blue (65%)



Red (100%)

Yellow (51%)

Blue (65%)

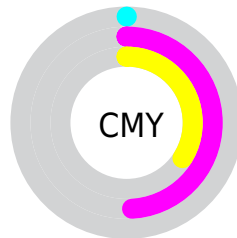


Cyan (0%)

Magenta (49%)

Yellow (34%)

Black (0%)



Cyan (0%)

Magenta (49%)

Yellow (34%)

Brightness & Saturation Gradients

These gradients show how the YIQ color 171.5930, 62.6230, 38.0070 changes by changing the brightness by 10 percent. The first figure shows a shift by +10% for each color and the second figure -10%.

Similar to the brightness gradients but the following saturation gradients show a change of the YIQ color 171.5930, 62.6230, 38.0070 by changing the saturation by 10% instead.

171.5930, 62.6230,
38.0070

171.5930, 62.6230,
38.0070

255.0000, -0.0000,
-0.0000

143.8100, 60.5140,
37.6820

210.7350, 29.5680,
25.8240

116.0270, 58.4050,
37.3570

230.4770, 12.5590,
20.1990

88.1840, 56.5250,
38.3890

247.9560, 3.3000,
6.2760

56.2320, 56.5700,
43.0820

37.7210, 50.5190,
37.1030

27.0690, 40.2510,
24.9470

17.2710, 33.3300,

12.7060

■ 4.4850, 8.9400,
3.1800

■ 0.0000, 0.0000,
0.0000

■ 171.5930, 62.6230,
38.0070

■ 171.5930, 62.6230,
38.0070

■ 154.2790, 75.5510,
46.0070

■ 188.3200, 49.9700,
30.5300

■ 137.5520, 88.2040,
53.4840

■ 205.6340, 37.0420,
22.5300

■ 120.2380,
101.1320, 61.4840

■ 222.3610, 24.3890,
15.0530

■ 103.5110,
113.7850, 68.9610

■ 239.6750, 11.4610,
7.0530

■ 86.1970, 126.7130, 255.0000, -0.0000,
76.9610 -0.0000

■ 84.9090, 127.5840,
77.6960

Harmonies

Analogous

The Analogous color harmony consists of three colors that are next to each other on the color wheel.



174.3570, 31.3530, 43.0410



171.5930, 62.6230, 38.0070



169.3870, 74.2260, 20.4500

Triad

The Triadic color harmony groups three colors that are evenly spaced from another and form a triangle on the color wheel.



171.5930, 62.6230, 38.0070



160.2210, 8.1220, -37.0780



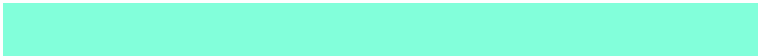
137.9100, -132.0420, -18.9060

Complementary

The Complementary color scheme is a pair of colors which are on the opposite of each other on the color wheel.



171.5930, 62.6230, 38.0070



213.4070, -62.6230, -38.0070

Split Complementary

Split-complementary colors differ from the complementary color scheme. The scheme consists of three colors, the original color and two neighbors of the complement color.



137.6700, -123.0990, -32.3070



171.5930, 62.6230, 38.0070



150.2980, -43.5030, -43.1110

Square

The Square scheme is like the rectangle color scheme, but the four colors are evenly spaced on the color wheel.



171.5930, 62.6230, 38.0070



165.2320, 45.1200, -24.7680



133.0130, -108.6080, -47.1360



158.7270, -73.4060, 8.7540

Rectangle

The Rectangle color scheme consists of four colors that form a rectangle on the color wheel.



171.5930, 62.6230, 38.0070



168.5200, 71.7530, 4.6890



133.0130, -108.6080, -47.1360



138.0580, -129.7030, -22.7510

Sweetspot

The Sweet Spot groups the original color and five complimentary colors.



171.5930, 62.6230, 38.0070



229.6160, 19.1170, 11.4770



170.2630, 11.7270, 57.3190



112.5610, 11.7820, 6.7420



0.0000, 0.0000, 0.0000



128.0000, -0.0000, -0.0000

Same Dimension

The Same Dimension uses a secret algorithm to generate beautiful new colors.



171.5930, 62.6230, 38.0070



154.8660, 75.2760, 45.4840



182.0500, 67.6250, 13.4250



119.3430, 6.4640, 4.0000



63.6070, 95.5390, 58.2190



21.3020, 32.0450, 19.4770

Inverse Universe

The Inverse Universe completely reimagines the original color for something new.



171.5930, 62.6230, 38.0070



154.8660, 75.2760, 45.4840



202.9500, -67.6250, -13.4250



119.3430, 6.4640, 4.0000



63.6070, 95.5390, 58.2190



21.3020, 32.0450, 19.4770

Previews

White Background



This preview shows how the YIQ color 171.5930, 62.6230, 38.0070 looks on a white background.

Color Contrast Check

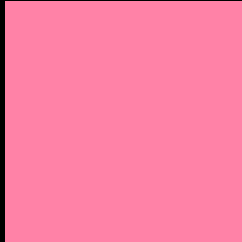
Large Text (above 18pt) WCAG AA × Fail

Any Text WCAG AA × Fail

Large Text (above 18pt) WCAG AAA × Fail

Any Text WCAG AAA × Fail

Black Background



This preview shows how the YIQ color 171.5930, 62.6230, 38.0070 looks on a black background.

Color Contrast Check

Large Text (above 18pt) WCAG AA ✓ Pass

Any Text WCAG AA ✓ Pass

Large Text (above 18pt) WCAG AAA ✓ Pass

Any Text WCAG AAA ✓ Pass

If you want to check with other color combinations, try the [Color Contrast Checker](#).

YIQ 171.5930, 62.6230, 38.0070

Background



This preview shows how black text looks on a background with the YIQ color 171.5930, 62.6230, 38.0070.

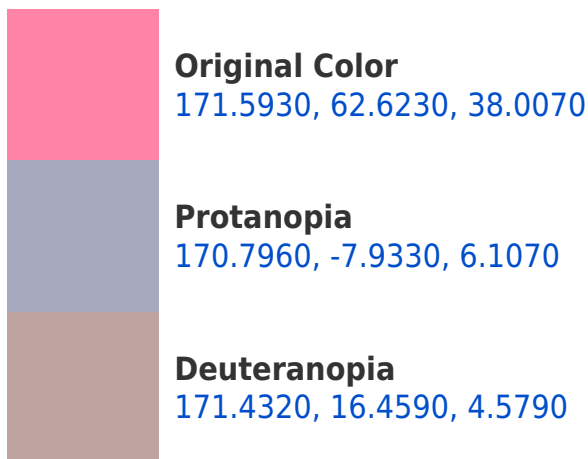


This preview shows how white text looks on a background with the YIQ color 171.5930, 62.6230,

Color Blindness Simulation

Color vision deficiency is a very complex topic, and I could not describe the different causes any better than Wikipedia does, so if you want to learn more, you should check out their [article about color blindness](#).

Dichromacy

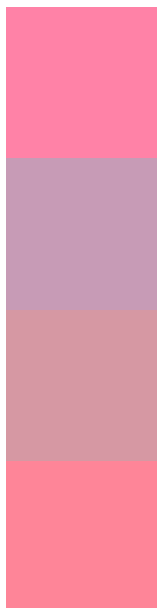




Tritanopia

170.7210, 67.7140, 28.3380

Trichromacy



Original Color

171.5930, 62.6230, 38.0070

Protanomaly

171.2340, 17.5570, 17.7250

Deuteranomaly

171.7920, 33.4210, 16.5650

Tritanomaly

171.3450, 66.0170, 31.5610

Monochromacy



Original Color

171.5930, 62.6230, 38.0070

Achromatopsia

172.0000, -0.0000, -0.0000

Achromatomaly

171.9370, 22.6470, 13.5830

CSS Examples

Text

The CSS property to change the color of the text to YIQ 171.5930, 62.6230, 38.0070 is called "color". The color property can be set on classes, ids or directly on the HTML element.

This example shows how text in the color `rgb(255, 130, 167)` looks like.

```
.text, #text, p{  
    color:rgb(255, 130, 167)  
}
```

If you want to add a text shadow in that color use the text-shadow property, you can generate a text shadow directly with our [CSS Text Shadow Generator](#).

Here you see how black text with a 4 pixel rgb(255, 130, 167) colored shadow looks like.

```
.shadow{ text-shadow: 4px 4px 2px rgb(255, 130, 167) }
```

Border

The CSS property to change the border of an element to YIQ 171.5930, 62.6230, 38.0070 is called "border". The border property can be set on classes, ids or directly on the HTML element.

This example shows the color as border, it can be applied via the CSS property "border" or "border-color".

```
.border, #border, table{ border:4px solid rgb(255, 130, 167) }
```


If only the border color should be changed use the property `border-color`.

```
.border{ border-color:rgb(255, 130, 167) }
```

If you want to add a box shadow in that color use:

Here you see how a box with a 4 pixel `rgb(255, 130, 167)` colored shadow looks like.

```
.boxshadow{ -moz-box-shadow:4px 4px 4px  
4px rgb(255, 130, 167); -webkit-box-  
shadow:4px 4px 4px 4px rgb(255, 130, 167);  
box-shadow:4px 4px 4px 4px rgb(255, 130,  
167) }
```

Background

The CSS property to change the background color of an element to YIQ 171.5930, 62.6230, 38.0070 is called "background". The background property can be set on classes, ids or directly on the HTML element.

```
.background, #background, body{  
background: rgb(255, 130, 167) }
```

If only the background color should be changed can be used:

```
.background{ background-color: rgb(255,  
130, 167) }
```

This example shows the color as background, it is applied via the CSS property "background".

To optimize and compress your CSS code, you can use our [online CSS compressor and optimizer](#) based on csstidy. If you want to create a linear or radial gradient as background or border, check our [CSS Gradient Generator](#).

Hey! You found this booklet interesting? Support Converting Colors with the new Membership Option!

The pro membership hides all ads, plus gives you double the colors in the color bucket, and more awesome pro features!

[Learn more, Memberships starting at \\$2.50/m!](#)

**Follow me
on Twitter!**

@ConvertingColor