

# Converting Colors

YIQ(171.7990, 31.5430, 6.5430)

Have a look what the booklet for  
YIQ(171.7990, 31.5430, 6.5430)  
contains.

<b>YIQ(171.7990, 31.5430, 6.5430)</b> .....	3
<b><i>Conversions</i></b> .....	4
<b><i>Details</i></b> .....	6
<b><i>Harmonies</i></b> .....	12
<b><i>Previews</i></b> .....	24
<b><i>Color Blindness Simulation</i></b> .....	28
<b><i>CSS Examples</i></b> .....	31

# Color

**YIQ(171.7990, 31.5430,  
6.5430)**

# Conversions

## Conversions Part 1

<b>Format</b>	<b>Color</b>
Hex	CE9F94
RGB	206, 159, 148
RGB Percent	81%, 62%, 58%
CMY	0.1921, 0.3765, 0.4195
CMYK	0.00, 0.23, 0.28, 0.19
HSL	11°, 37%, 69%
HSV	11°, 28%, 81%
XYZ	43.2038, 40.0543, 33.4853
YIQ	171.7990, 31.5430, 6.5430

# Conversions

## Conversions Part 2

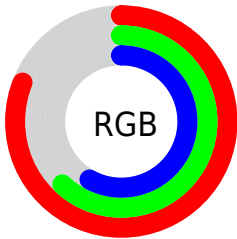
<b>Format</b>	<b>Color</b>
<b>R<sub>YB</sub></b>	206, 162, 148
Decimal	13541268
CIE <sub>Lab</sub>	69.51, 15.87, 12.43
CIE <sub>LCh</sub>	70, 20.160, 38.065
Yxy	40.0543, 0.3701, 0.3431
Android (android.graphics.Color)	4291731348 (0xFFCE9F94)
YUV	171.7990, -11.7329, 29.9943
Hunter-Lab	63.2885, 11.0979, 12.9322

# Details

The YIQ color **171.7990, 31.5430, 6.5430** is a light color, and the websafe version is hex **CC9999**. A complement of this color would be **182.2010, -31.5430, -6.5430**, and the grayscale version is **172.0000, -0.0000, -0.0000**.

A 20% lighter version of the original color is **224.8910, 28.2880, 4.9600**, and **119.0160, 29.4340, 6.2180** is the 20% darker color. If you saturate the color by 10%, you get **159.4260, 42.9590, 8.9030**, and if you desaturate by 10%, it is **184.1720, 20.1270, 4.1830**.

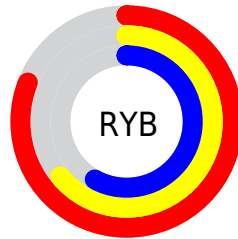
# Distribution



Red (81%)

Green (62%)

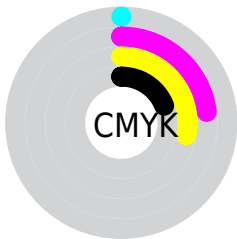
Blue (58%)



Red (81%)

Yellow (64%)

Blue (58%)

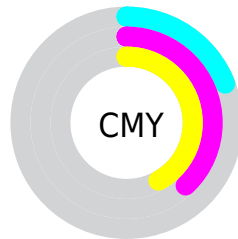


Cyan (0%)

Magenta (23%)

Yellow (28%)

Black (19%)



Cyan (19%)

Magenta (38%)

Yellow (42%)

# Brightness & Saturation Gradients

These gradients show how the YIQ color 171.7990, 31.5430, 6.5430 changes by changing the brightness by 10 percent. The first figure shows a shift by +10% for each color and the second figure -10%.

Similar to the brightness gradients but the following saturation gradients show a change of the YIQ color 171.7990, 31.5430, 6.5430 by changing the saturation by 10% instead.



■ 171.7990, 31.5430,  
6.5430

■ 171.7990, 31.5430,  
6.5430

255.0000, -0.0000,  
-0.0000

■ 145.2010, 30.3510,  
6.1190

■ 224.8910, 28.2880,  
4.9600

■ 119.0160, 29.4340,  
6.2180

■ 244.5190, 11.6000,  
-0.9760

■ 94.2330, 27.3250,  
5.8930

■ 70.3360, 25.5370,  
5.2570

■ 47.5530, 23.4280,  
4.9320

■ 24.9120, 23.7950,  
3.7870

■ 8.1870, 15.7710,

6.0350

■ 0.0000, 0.0000,  
0.0000

■ 171.7990, 31.5430,  
6.5430

■ 171.7990, 31.5430,  
6.5430

■ 159.4260, 42.9590,  
8.9030

■ 184.1720, 20.1270,  
4.1830

■ 147.7540, 53.7790,  
11.0510

■ 195.8440, 9.3070,  
2.0350

■ 135.3810, 65.1950,  
13.4110

■ 208.2170, -2.1090,  
-0.3250

■ 123.1220, 76.2900,  
16.0820

■ 220.4760,  
-13.2040, -2.9960

■ 110.7490, 87.7060,  
18.4420

■ 232.8490,  
-24.6200, -5.3560

■ 98.9630, 98.8470,  
20.2790

■ 240.3490,  
-29.2040, -10.3880

■ 86.7040, 109.9420,  
22.9500

■ 84.4870, 112.0510,  
23.2750

# Harmonies

## Analogous

The Analogous color harmony consists of three colors that are next to each other on the color wheel.



172.8620, 27.2320, 13.0880



171.7990, 31.5430, 6.5430



170.3760, 28.0600, -1.9240

# Triad

The Triadic color harmony groups three colors that are evenly spaced from another and form a triangle on the color wheel.



171.7990, 31.5430, 6.5430



164.1190, -17.0530, -15.8450



169.6190, -20.4960, 8.0160

# Complementary

The Complementary color scheme is a pair of colors which are on the opposite of each other on the color wheel.



171.7990, 31.5430, 6.5430



182.2010, -31.5430, -6.5430

# Split Complementary

Split-complementary colors differ from the complementary color scheme. The scheme consists of three colors, the original color and two neighbors of the complement color.



165.6340, -34.0200, -0.1960



171.7990, 31.5430, 6.5430



162.2730, -32.0460, -13.9500

# Square

The Square scheme is like the rectangle color scheme, but the four colors are evenly spaced on the color wheel.



171.7990, 31.5430, 6.5430



166.0410, 0.7820, -14.1780



162.8410, -39.3370, -8.4650



171.8880, -2.0200, 14.5880



# Rectangle

The Rectangle color scheme consists of four colors that form a rectangle on the color wheel.



171.7990, 31.5430, 6.5430



169.0930, 21.3670, -7.2810



162.8410, -39.3370, -8.4650



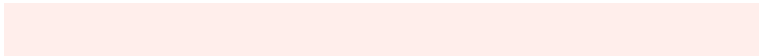
168.4010, -25.8140, 5.2740

# Sweetspot

The Sweet Spot groups the original color and five complimentary colors.



171.7990, 31.5430, 6.5430



242.7410, 11.0950, 2.6710



170.7000, 19.4810, 26.9130



120.0610, 7.1980, 1.7100



0.0000, 0.0000, 0.0000



128.0000, -0.0000, -0.0000



# Same Dimension

The Same Dimension uses a secret algorithm to generate beautiful new colors.



171.7990, 31.5430, 6.5430



203.9920, 47.1770, 9.5530



188.8220, 23.5680, -8.6240



96.1640, 5.4100, 1.0740



67.8310, 90.4110, 18.9790



15.4710, 20.7230, 4.3950



# Inverse Universe

The Inverse Universe completely reimagines the original color for something new.



182.2010, -31.5430, -6.5430



219.5950, -47.4520, -10.0760



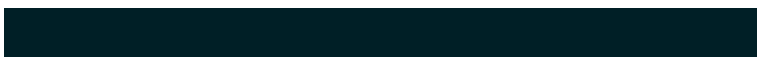
165.1780, -23.5680, 8.6240



97.8360, -5.4100, -1.0740



97.5820, -90.1360, -18.4560

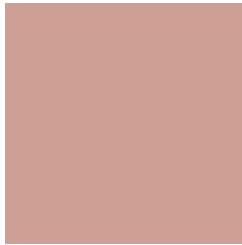


22.5290, -20.7230, -4.3950



# Previews

## White Background



This preview shows how the YIQ color 171.7990, 31.5430, 6.5430 looks on a white background.

## Color Contrast Check

Large Text (above 18pt) WCAG AA × Fail

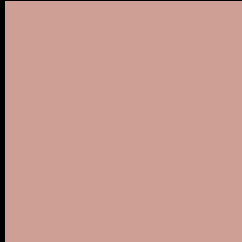
Any Text WCAG AA × Fail

Large Text (above 18pt) WCAG AAA × Fail

Any Text WCAG AAA × Fail



# Black Background



This preview shows how the YIQ color 171.7990, 31.5430, 6.5430 looks on a black background.

## Color Contrast Check

Large Text (above 18pt) WCAG AA ✓ Pass

Any Text WCAG AA ✓ Pass

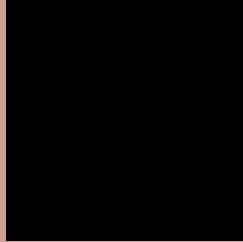
Large Text (above 18pt) WCAG AAA ✓ Pass

Any Text WCAG AAA ✓ Pass

If you want to check with other color combinations, try the [Color Contrast Checker](#).

# YIQ 171.7990, 31.5430, 6.5430

## Background



This preview shows how black text looks on a background with the YIQ color 171.7990, 31.5430, 6.5430.



This preview shows how white text looks on a background with the YIQ color 171.7990, 31.5430,

6.5430.

# Color Blindness Simulation

Color vision deficiency is a very complex topic, and I could not describe the different causes any better than Wikipedia does, so if you want to learn more, you should check out their [article about color blindness](#).

## Dichromacy



### Original Color

171.7990, 31.5430, 6.5430

### Protanopia

169.5680, 9.9040, -3.2800

### Deuteranopia

171.3310, 23.9330, 1.2850



## Tritanopia

172.9160, 27.1400, 14.7560

# Trichromacy



## Original Color

171.7990, 31.5430, 6.5430

## Protanomaly

170.2810, 18.2020, 0.5220

## Deuteranomaly

171.3530, 26.8670, 3.1790

## Tritanomaly

172.4060, 28.5160, 11.8440

# Monochromacy



## Original Color

171.7990, 31.5430, 6.5430

## Achromatopsia

172.0000, -0.0000, -0.0000

## Achromatomaly

171.6270, 11.4160, 2.3600

# CSS Examples

## Text

The CSS property to change the color of the text to YIQ 171.7990, 31.5430, 6.5430 is called "color". The color property can be set on classes, ids or directly on the HTML element.

This example shows how text in the color `rgb(206, 159, 148)` looks like.

```
.text, #text, p{  
    color:rgb(206, 159, 148)  
}
```

If you want to add a text shadow in that color use the text-shadow property, you can generate a text shadow directly with our [CSS Text Shadow Generator](#).

Here you see how black text with a 4 pixel rgb(206, 159, 148) colored shadow looks like.

```
.shadow{ text-shadow: 4px 4px 2px rgb(206, 159, 148) }
```

## Border

The CSS property to change the border of an element to YIQ 171.7990, 31.5430, 6.5430 is called "border". The border property can be set on classes, ids or directly on the HTML element.

This example shows the color as border, it can be applied via the CSS property "border" or "border-color".

```
.border, #border, table{ border:4px solid rgb(206, 159, 148) }
```



If only the border color should be changed use the property border-color.

```
.border{ border-color:rgb(206, 159, 148) }
```

If you want to add a box shadow in that color use:

Here you see how a box with a 4 pixel rgb(206, 159, 148) colored shadow looks like.

```
.boxshadow{ -moz-box-shadow:4px 4px 4px  
4px rgb(206, 159, 148); -webkit-box-  
shadow:4px 4px 4px 4px rgb(206, 159, 148);  
box-shadow:4px 4px 4px 4px rgb(206, 159,  
148) }
```

# Background

The CSS property to change the background color of an element to YIQ 171.7990, 31.5430, 6.5430 is called "background". The background property can be set on classes, ids or directly on the HTML element.

```
.background, #background, body{  
background: rgb(206, 159, 148) }
```

If only the background color should be changed can be used:

```
.background{ background-color: rgb(206,  
159, 148) }
```

This example shows the color as background, it is applied via the CSS property "background".

To optimize and compress your CSS code, you can use our [online CSS compressor and optimizer](#) based on csstidy. If you want to create a linear or radial gradient as background or border, check our [CSS Gradient Generator](#).

Hey! You found this booklet interesting? Support Converting Colors with the new Membership Option!

The pro membership hides all ads, plus gives you double the colors in the color bucket, and more awesome pro features!

**[Learn more, Memberships starting at \\$2.50/m!](#)**

**Follow me  
on Twitter!**

@ConvertingColor