

Converting Colors

YIQ(171.8170, 13.9370, 6.2330)

Have a look what the booklet for
YIQ(171.8170, 13.9370, 6.2330)
contains.

YIQ(171.8170, 13.9370, 6.2330)	3
<i>Conversions</i>	4
<i>Details</i>	6
<i>Harmonies</i>	12
<i>Previews</i>	24
<i>Color Blindness Simulation</i>	28
<i>CSS Examples</i>	31

Color

**YIQ(171.8170, 13.9370,
6.2330)**

Conversions

Conversions Part 1

Format	Color
Hex	BDA4A7
RGB	189, 164, 167
RGB Percent	74%, 64%, 65%
CMY	0.2588, 0.3569, 0.3450
CMYK	0.00, 0.13, 0.12, 0.26
HSL	353°, 16%, 69%
HSV	353°, 13%, 74%
XYZ	41.2400, 40.1585, 42.1435
YIQ	171.8170, 13.9370, 6.2330

Conversions

Conversions Part 2

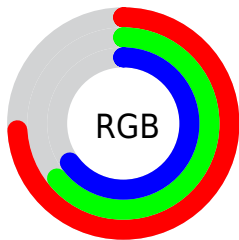
Format	Color
RYB	189, 164, 167
Decimal	12428455
CIELab	69.58, 9.64, 1.80
CIELCh	70, 9.805, 10.589
Yxy	40.1585, 0.3338, 0.3251
Android (android.graphics.Color)	4290618535 (0xFFBDA4A7)
YUV	171.8170, -2.3748, 15.0695
Hunter-Lab	63.3707, 5.2644, 4.9298

Details

The YIQ color **171.8170, 13.9370, 6.2330** is a light color, and the websafe version is hex **CC9999**. A complement of this color would be **181.1830, -13.9370, -6.2330**, and the grayscale version is **172.0000, -0.0000, -0.0000**.

A 20% lighter version of the original color is **227.1160, 14.5330, 6.4450**, and **119.2190, 12.7450, 5.8090** is the 20% darker color. If you saturate the color by 10%, you get **158.7260, 24.6190, 10.8830**, and if you desaturate by 10%, it is **184.9080, 3.2550, 1.5830**.

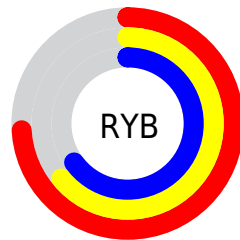
Distribution



Red (74%)

Green (64%)

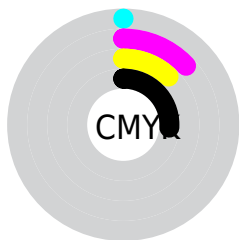
Blue (65%)



Red (74%)

Yellow (64%)

Blue (65%)

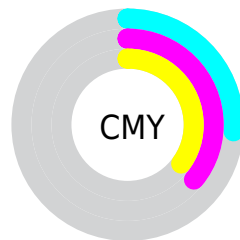


Cyan (0%)

Magenta (13%)

Yellow (12%)

Black (26%)



Cyan (26%)

Magenta (36%)

Yellow (35%)

Brightness & Saturation Gradients

These gradients show how the YIQ color 171.8170, 13.9370, 6.2330 changes by changing the brightness by 10 percent. The first figure shows a shift by +10% for each color and the second figure -10%.

Similar to the brightness gradients but the following saturation gradients show a change of the YIQ color 171.8170, 13.9370, 6.2330 by changing the saturation by 10% instead.

■ 171.8170, 13.9370,
6.2330

■ 171.8170, 13.9370,
6.2330

255.0000, -0.0000,
-0.0000

■ 145.5180, 13.3410,
6.0210

■ 227.1160, 14.5330,
6.4450

■ 119.2190, 12.7450,
5.8090

■ 249.8480, 3.4840,
2.9400

■ 94.9200, 12.1490,
5.5970

■ 70.6210, 11.5530,
5.3850

■ 48.3220, 10.9570,
5.1730

■ 27.7240, 9.7650,
4.7490

■ 5.3820, 10.7280,

3.8160

0.0000, 0.0000,
0.0000

171.8170, 13.9370,
6.2330

171.8170, 13.9370,
6.2330

158.7260, 24.6190,
10.8830

184.9080, 3.2550,
1.5830

145.7490, 34.9800,
15.8440

197.8850, -7.1060,
-3.3780

132.6580, 45.6620,
20.4940

210.9760,
-17.7880, -8.0280

119.6810, 56.0230,
25.4550

223.9530,
-28.1490, -12.9890

106.5900, 66.7050,
30.1050

234.6960,
-37.7310, -15.5470

■ 94.0860, 77.1120,
34.2320

■ 235.2660,
-39.3360, -13.9920

■ 81.1090, 87.4730,
39.1930

■ 68.0180, 98.1550,
43.8430

■ 59.1330, 105.2610,
47.2210

Harmonies

Analogous

The Analogous color harmony consists of three colors that are next to each other on the color wheel.



171.9350, 7.7930, 7.4490



171.8170, 13.9370, 6.2330



171.1930, 15.6340, 3.0100

Triad

The Triadic color harmony groups three colors that are evenly spaced from another and form a triangle on the color wheel.



171.8170, 13.9370, 6.2330



168.3710, 0.0930, -7.1950



168.5130, -14.6260, 0.7500

Complementary

The Complementary color scheme is a pair of colors which are on the opposite of each other on the color wheel.



171.8170, 13.9370, 6.2330



181.1830, -13.9370, -6.2330

Split Complementary

Split-complementary colors differ from the complementary color scheme. The scheme consists of three colors, the original color and two neighbors of the complement color.



167.9100, -17.4220, -3.6460



171.8170, 13.9370, 6.2330



167.4670, -8.9850, -7.8730

Square

The Square scheme is like the rectangle color scheme, but the four colors are evenly spaced on the color wheel.



171.8170, 13.9370, 6.2330



169.2580, 7.8410, -4.4390



166.9980, -14.8540, -6.1340



170.4430, -8.4370, 4.2270

Rectangle

The Rectangle color scheme consists of four colors that form a rectangle on the color wheel.



171.8170, 13.9370, 6.2330



171.0140, 14.5800, 0.0840



166.9980, -14.8540, -6.1340



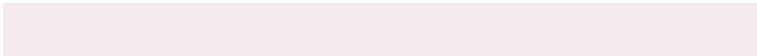
168.0890, -16.3680, -0.7200

Sweetspot

The Sweet Spot groups the original color and five complimentary colors.



171.8170, 13.9370, 6.2330



238.1040, 5.6390, 2.4310



173.4280, 5.0870, 12.4390



117.9080, 3.2550, 1.5830



250.0000, 0.0000, 0.0000



122.0000, 0.0000, -0.0000

Same Dimension

The Same Dimension uses a secret algorithm to generate beautiful new colors.



171.8170, 13.9370, 6.2330



218.1170, 21.9600, 9.5120



176.7580, 12.4250, 0.5930



87.8050, 5.0430, 2.2190



49.4080, 88.0690, 39.4050



9.7250, 17.1920, 7.8160

Inverse Universe

The Inverse Universe completely reimagines the original color for something new.



171.8170, 13.9370, 6.2330



218.1170, 21.9600, 9.5120



176.2420, -12.4250, -0.5930



87.8050, 5.0430, 2.2190



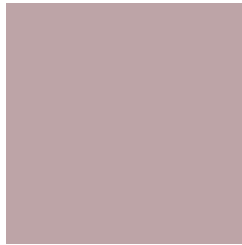
49.4080, 88.0690, 39.4050



9.7250, 17.1920, 7.8160

Previews

White Background



This preview shows how the YIQ color 171.8170, 13.9370, 6.2330 looks on a white background.

Color Contrast Check

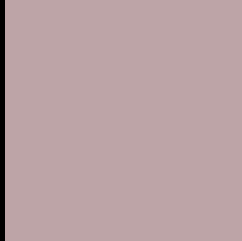
Large Text (above 18pt) WCAG AA × Fail

Any Text WCAG AA × Fail

Large Text (above 18pt) WCAG AAA × Fail

Any Text WCAG AAA × Fail

Black Background



This preview shows how the YIQ color 171.8170, 13.9370, 6.2330 looks on a black background.

Color Contrast Check

Large Text (above 18pt) WCAG AA ✓ Pass

Any Text WCAG AA ✓ Pass

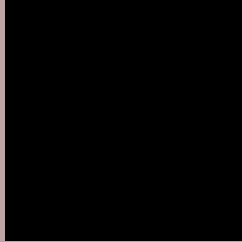
Large Text (above 18pt) WCAG AAA ✓ Pass

Any Text WCAG AAA ✓ Pass

If you want to check with other color combinations, try the [Color Contrast Checker](#).

YIQ 171.8170, 13.9370, 6.2330

Background



This preview shows how black text looks on a background with the YIQ color 171.8170, 13.9370, 6.2330.



This preview shows how white text looks on a background with the YIQ color 171.8170, 13.9370,

Color Blindness Simulation

Color vision deficiency is a very complex topic, and I could not describe the different causes any better than Wikipedia does, so if you want to learn more, you should check out their [article about color blindness](#).

Dichromacy



Original Color

171.8170, 13.9370, 6.2330

Protanopia

170.3100, 2.0630, 1.1590

Deuteranopia

172.1050, 13.0660, 5.4980



Tritanopia

172.4410, 12.2400, 9.4560

Trichromacy



Original Color

171.8170, 13.9370, 6.2330

Protanomaly

170.8160, 6.5100, 3.1660

Deuteranomaly

172.1050, 13.0660, 5.4980

Tritanomaly

172.0990, 13.2030, 8.5230

Monochromacy



Original Color

171.8170, 13.9370, 6.2330

Achromatopsia

172.0000, -0.0000, -0.0000

Achromatomaly

171.8050, 5.0430, 2.2190

CSS Examples

Text

The CSS property to change the color of the text to YIQ 171.8170, 13.9370, 6.2330 is called "color". The color property can be set on classes, ids or directly on the HTML element.

This example shows how text in the color `rgb(189, 164, 167)` looks like.

```
.text, #text, p{  
    color:rgb(189, 164, 167)  
}
```

If you want to add a text shadow in that color use the text-shadow property, you can generate a text shadow directly with our [CSS Text Shadow Generator](#).

Here you see how black text with a 4 pixel rgb(189, 164, 167) colored shadow looks like.

```
.shadow{ text-shadow: 4px 4px 2px rgb(189, 164, 167) }
```

Border

The CSS property to change the border of an element to YIQ 171.8170, 13.9370, 6.2330 is called "border". The border property can be set on classes, ids or directly on the HTML element.

This example shows the color as border, it can be applied via the CSS property "border" or "border-color".

```
.border, #border, table{ border:4px solid rgb(189, 164, 167) }
```


If only the border color should be changed use the property `border-color`.

```
.border{ border-color:rgb(189, 164, 167) }
```

If you want to add a box shadow in that color use:

Here you see how a box with a 4 pixel `rgb(189, 164, 167)` colored shadow looks like.

```
.boxshadow{ -moz-box-shadow:4px 4px 4px 4px rgb(189, 164, 167); -webkit-box-shadow:4px 4px 4px 4px rgb(189, 164, 167); box-shadow:4px 4px 4px 4px rgb(189, 164, 167) }
```

Background

The CSS property to change the background color of an element to YIQ 171.8170, 13.9370, 6.2330 is called "background". The background property can be set on classes, ids or directly on the HTML element.

```
.background, #background, body{  
background: rgb(189, 164, 167) }
```

If only the background color should be changed can be used:

```
.background{ background-color: rgb(189,  
164, 167) }
```

This example shows the color as background, it is applied via the CSS property "background".

To optimize and compress your CSS code, you can use our [online CSS compressor and optimizer](#) based on csstidy. If you want to create a linear or radial gradient as background or border, check our [CSS Gradient Generator](#).

Hey! You found this booklet interesting? Support Converting Colors with the new Membership Option!

The pro membership hides all ads, plus gives you double the colors in the color bucket, and more awesome pro features!

[Learn more, Memberships starting at \\$2.50/m!](#)

**Follow me
on Twitter!**

@ConvertingColor