

Converting Colors

YIQ(172.0410, 19.1180, 5.9500)

Have a look what the booklet for
YIQ(172.0410, 19.1180, 5.9500)
contains.

| | |
|--|----|
| YIQ(172.0410, 19.1180, 5.9500) | 3 |
| <i>Conversions</i> | 4 |
| <i>Details</i> | 6 |
| <i>Harmonies</i> | 12 |
| <i>Previews</i> | 24 |
| <i>Color Blindness Simulation</i> | 28 |
| <i>CSS Examples</i> | 31 |

Color

**YIQ(172.0410, 19.1180,
5.9500)**

Conversions

Conversions Part 1

| Format | Color |
|-------------|---------------------------|
| Hex | C2A3A1 |
| RGB | 194, 163, 161 |
| RGB Percent | 76%, 64%, 63% |
| CMY | 0.2391, 0.3608, 0.3685 |
| CMYK | 0.00, 0.16, 0.17, 0.24 |
| HSL | 4°, 21%, 70% |
| HSV | 4°, 17%, 76% |
| XYZ | 41.7825, 40.2354, 39.2914 |
| YIQ | 172.0410, 19.1180, 5.9500 |

Conversions

Conversions Part 2

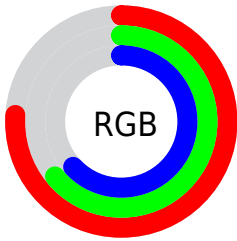
| Format | Color |
|-------------------------------------|--|
| RYB | 194, 163, 161 |
| Decimal | 12755873 |
| CIELab | 69.64, 11.06, 5.26 |
| CIELCh | 70, 12.243, 25.450 |
| Yxy | 40.2354, 0.3444, 0.3317 |
| Android (android.graphics.Color) | 4290945953 (0xFFC2A3A1) |
| YUV | 172.0410, -5.4432, 19.2580 |
| Hunter-Lab | 63.4314, 6.5737, 7.6759 |

Details

The YIQ color **172.0410, 19.1180, 5.9500** is a light color, and the websafe version is hex **CC9999**. A complement of this color would be **182.9590, -19.1180, -5.9500**, and the grayscale version is **172.0000, -0.0000, -0.0000**.

A 20% lighter version of the original color is **227.6390, 20.3100, 6.3740**, and **119.5570, 17.6050, 5.8370** is the 20% darker color. If you saturate the color by 10%, you get **159.3090, 30.1670, 9.4550**, and if you desaturate by 10%, it is **184.7730, 8.0690, 2.4450**.

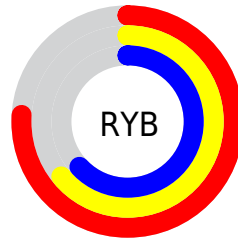
Distribution



Red (76%)

Green (64%)

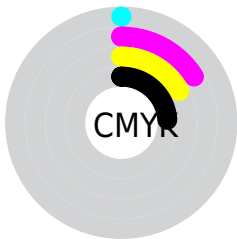
Blue (63%)



Red (76%)

Yellow (64%)

Blue (63%)

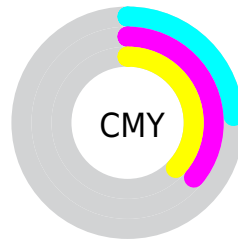


Cyan (0%)

Magenta (16%)

Yellow (17%)

Black (24%)



Cyan (24%)

Magenta (36%)

Yellow (37%)

Brightness & Saturation Gradients

These gradients show how the YIQ color 172.0410, 19.1180, 5.9500 changes by changing the brightness by 10 percent. The first figure shows a shift by +10% for each color and the second figure -10%.

Similar to the brightness gradients but the following saturation gradients show a change of the YIQ color 172.0410, 19.1180, 5.9500 by changing the saturation by 10% instead.

■ 172.0410, 19.1180,
5.9500

■ 172.0410, 19.1180,
5.9500

255.0000, -0.0000,
-0.0000

■ 145.7420, 18.5220,
5.7380

■ 227.6390, 20.3100,
6.3740

■ 119.5570, 17.6050,
5.8370

■ 248.4630, 6.0060,
1.2860

■ 94.8450, 16.7340,
5.1020

■ 70.6600, 15.8170,
5.2010

■ 48.0620, 14.6250,
4.7770

■ 27.4640, 13.4330,
4.3530

■ 6.2790, 12.5160,

4.4520

0.0000, 0.0000,
0.0000

172.0410, 19.1180,
5.9500

172.0410, 19.1180,
5.9500

159.3090, 30.1670,
9.4550

184.7730, 8.0690,
2.4450

146.4630, 41.5370,
12.6490

197.6190, -3.3010,
-0.7490

133.1440, 52.8610,
16.6770

210.9380,
-14.6250, -4.7770

120.2980, 64.2310,
19.8710

223.7840,
-25.9950, -7.9710

107.5660, 75.2800,
23.3760

236.1740,
-36.0810, -12.4090

■ 94.8340, 86.3290,
26.8810

■ 236.7610,
-36.3560, -12.9320

■ 81.4010, 97.9740,
30.5980

■ 68.6690, 109.0230,
34.1030

■ 65.0500, 112.3240,
34.8520

Harmonies

Analogous

The Analogous color harmony consists of three colors that are next to each other on the color wheel.



172.6970, 14.3950, 8.9470



172.0410, 19.1180, 5.9500



170.9930, 19.0730, 1.2570

Triad

The Triadic color harmony groups three colors that are evenly spaced from another and form a triangle on the color wheel.



172.0410, 19.1180, 5.9500



167.2670, -5.5460, -9.6260



169.4960, -15.9560, 2.8280

Complementary

The Complementary color scheme is a pair of colors which are on the opposite of each other on the color wheel.



172.0410, 19.1180, 5.9500



182.9590, -19.1180, -5.9500

Split Complementary

Split-complementary colors differ from the complementary color scheme. The scheme consists of three colors, the original color and two neighbors of the complement color.



167.8110, -21.4570, -2.1050



172.0410, 19.1180, 5.9500



166.7050, -15.5870, -9.3710

Square

The Square scheme is like the rectangle color scheme, but the four colors are evenly spaced on the color wheel.



172.0410, 19.1180, 5.9500



168.5950, 5.2740, -7.4780



166.1760, -21.2270, -6.2750



171.1060, -5.8700, 7.2660

Rectangle

The Rectangle color scheme consists of four colors that form a rectangle on the color wheel.



172.0410, 19.1180, 5.9500



170.6180, 15.6350, -2.5170



166.1760, -21.2270, -6.2750



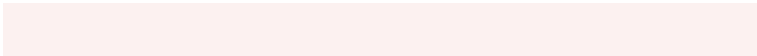
168.7730, -18.2940, 1.1460

Sweetspot

The Sweet Spot groups the original color and five complimentary colors.



172.0410, 19.1180, 5.9500



244.1750, 6.8770, 2.0210



174.4010, 9.7170, 16.6370



122.3920, 4.7680, 1.6960



0.0000, 0.0000, 0.0000



128.0000, -0.0000, -0.0000

Same Dimension

The Same Dimension uses a secret algorithm to generate beautiful new colors.



172.0410, 19.1180, 5.9500



218.7110, 28.9750, 9.0310



181.4330, 14.7180, -2.4180



90.5770, 5.6850, 1.5970



54.0090, 93.2060, 28.9020



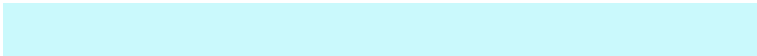
11.0410, 19.1180, 5.9500

Inverse Universe

The Inverse Universe completely reimagines the original color for something new.



182.9590, -19.1180, -5.9500



235.2890, -28.9750, -9.0310



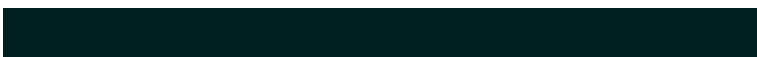
173.5670, -14.7180, 2.4180



93.4230, -5.6850, -1.5970



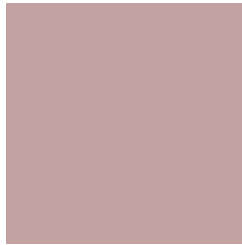
106.9910, -93.2060, -28.9020



21.9590, -19.1180, -5.9500

Previews

White Background



This preview shows how the YIQ color 172.0410, 19.1180, 5.9500 looks on a white background.

Color Contrast Check

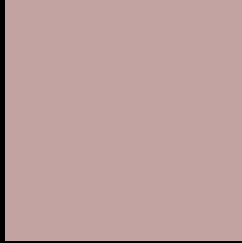
Large Text (above 18pt) WCAG AA × Fail

Any Text WCAG AA × Fail

Large Text (above 18pt) WCAG AAA × Fail

Any Text WCAG AAA × Fail

Black Background



This preview shows how the YIQ color 172.0410, 19.1180, 5.9500 looks on a black background.

Color Contrast Check

Large Text (above 18pt) WCAG AA ✓ Pass

Any Text WCAG AA ✓ Pass

Large Text (above 18pt) WCAG AAA ✓ Pass

Any Text WCAG AAA ✓ Pass

If you want to check with other color combinations, try the [Color Contrast Checker](#).

YIQ 172.0410, 19.1180, 5.9500

Background



This preview shows how black text looks on a background with the YIQ color 172.0410, 19.1180, 5.9500.



This preview shows how white text looks on a background with the YIQ color 172.0410, 19.1180,

Color Blindness Simulation

Color vision deficiency is a very complex topic, and I could not describe the different causes any better than Wikipedia does, so if you want to learn more, you should check out their [article about color blindness](#).

Dichromacy



Original Color

172.0410, 19.1180, 5.9500

Protanopia

170.9250, 4.5850, -0.4950

Deuteranopia

171.4320, 16.4590, 4.5790



Tritanopia

172.9470, 16.6870, 11.4630

Trichromacy



Original Color

172.0410, 19.1180, 5.9500

Protanomaly

171.1430, 9.9030, 2.2470

Deuteranomaly

171.7310, 17.0550, 4.7910

Tritanomaly

172.6650, 17.4210, 9.1730

Monochromacy



Original Color

172.0410, 19.1180, 5.9500

Achromatopsia

172.0000, -0.0000, -0.0000

Achromatomaly

172.1750, 6.8770, 2.0210

CSS Examples

Text

The CSS property to change the color of the text to YIQ 172.0410, 19.1180, 5.9500 is called "color". The color property can be set on classes, ids or directly on the HTML element.

This example shows how text in the color `rgb(194, 163, 161)` looks like.

```
.text, #text, p{  
    color:rgb(194, 163, 161)  
}
```

If you want to add a text shadow in that color use the text-shadow property, you can generate a text shadow directly with our [CSS Text Shadow Generator](#).

Here you see how black text with a 4 pixel rgb(194, 163, 161) colored shadow looks like.

```
.shadow{ text-shadow: 4px 4px 2px rgb(194, 163, 161) }
```

Border

The CSS property to change the border of an element to YIQ 172.0410, 19.1180, 5.9500 is called "border". The border property can be set on classes, ids or directly on the HTML element.

This example shows the color as border, it can be applied via the CSS property "border" or "border-color".

```
.border, #border, table{ border:4px solid rgb(194, 163, 161) }
```


If only the border color should be changed use the property `border-color`.

```
.border{ border-color:rgb(194, 163, 161) }
```

If you want to add a box shadow in that color use:

Here you see how a box with a 4 pixel `rgb(194, 163, 161)` colored shadow looks like.

```
.boxshadow{ -moz-box-shadow:4px 4px 4px  
4px rgb(194, 163, 161); -webkit-box-  
shadow:4px 4px 4px 4px rgb(194, 163, 161);  
box-shadow:4px 4px 4px 4px rgb(194, 163,  
161) }
```

Background

The CSS property to change the background color of an element to YIQ 172.0410, 19.1180, 5.9500 is called "background". The background property can be set on classes, ids or directly on the HTML element.

```
.background, #background, body{  
background: rgb(194, 163, 161) }
```

If only the background color should be changed can be used:

```
.background{ background-color: rgb(194,  
163, 161) }
```

This example shows the color as background, it is applied via the CSS property "background".

To optimize and compress your CSS code, you can use our [online CSS compressor and optimizer](#) based on csstidy. If you want to create a linear or radial gradient as background or border, check our [CSS Gradient Generator](#).

Hey! You found this booklet interesting? Support Converting Colors with the new Membership Option!

The pro membership hides all ads, plus gives you double the colors in the color bucket, and more awesome pro features!

[Learn more, Memberships starting at \\$2.50/m!](#)

**Follow me
on Twitter!**

@ConvertingColor