

Converting Colors

YIQ(172.6460, 27.6000, 6.4160)

Have a look what the booklet for
YIQ(172.6460, 27.6000, 6.4160)
contains.

| | |
|--|----|
| YIQ(172.6460, 27.6000, 6.4160) | 3 |
| <i>Conversions</i> | 4 |
| <i>Details</i> | 6 |
| <i>Harmonies</i> | 12 |
| <i>Previews</i> | 24 |
| <i>Color Blindness Simulation</i> | 28 |
| <i>CSS Examples</i> | 31 |

Color

**YIQ(172.6460, 27.6000,
6.4160)**

Conversions

Conversions Part 1

| Format | Color |
|-------------|---------------------------|
| Hex | CBA199 |
| RGB | 203, 161, 153 |
| RGB Percent | 80%, 63%, 60% |
| CMY | 0.2038, 0.3687, 0.3999 |
| CMYK | 0.00, 0.21, 0.25, 0.20 |
| HSL | 10°, 32%, 70% |
| HSV | 10°, 25%, 80% |
| XYZ | 43.1292, 40.4844, 35.6909 |
| YIQ | 172.6460, 27.6000, 6.4160 |

Conversions

Conversions Part 2

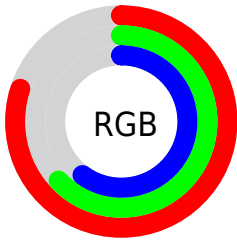
| Format | Color |
|-------------------------------------|-------------------------------|
| R _Y B | 203, 163, 153 |
| Decimal | 13345177 |
| CIE Lab | 69.81, 14.34, 10.05 |
| CIE LCh | 70, 17.511, 35.042 |
| Yxy | 40.4844, 0.3615, 0.3393 |
| Android (android.graphics.Color) | 4291535257 (0xFFCBA199) |
| YUV | 172.6460, -9.6855, 26.6205 |
| Hunter-Lab | 63.6273, 9.6468, 11.2812 |

Details

The YIQ color **172.6460, 27.6000, 6.4160** is a light color, and the websafe version is hex **CC9999**. A complement of this color would be **183.3540, -27.6000, -6.4160**, and the grayscale version is **173.0000, -0.0000, 0.0000**.

A 20% lighter version of the original color is **226.6350, 26.1330, 5.4690**, and **119.8630, 25.4910, 6.0910** is the 20% darker color. If you saturate the color by 10%, you get **160.3870, 38.6950, 9.0870**, and if you desaturate by 10%, it is **184.9050, 16.5050, 3.7450**.

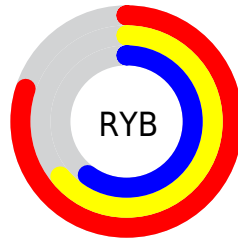
Distribution



Red (80%)

Green (63%)

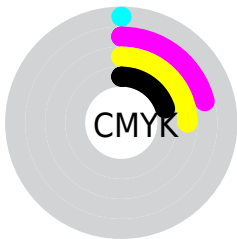
Blue (60%)



Red (80%)

Yellow (64%)

Blue (60%)

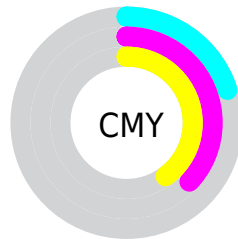


Cyan (0%)

Magenta (21%)

Yellow (25%)

Black (20%)



Cyan (20%)

Magenta (37%)

Yellow (40%)

Brightness & Saturation Gradients

These gradients show how the YIQ color 172.6460, 27.6000, 6.4160 changes by changing the brightness by 10 percent. The first figure shows a shift by +10% for each color and the second figure -10%.

Similar to the brightness gradients but the following saturation gradients show a change of the YIQ color 172.6460, 27.6000, 6.4160 by changing the saturation by 10% instead.

■ 172.6460, 27.6000,
6.4160

■ 172.6460, 27.6000,
6.4160

255.0000, -0.0000,
-0.0000

■ 146.0480, 26.4080,
5.9920

■ 226.6350, 26.1330,
5.4690

■ 119.8630, 25.4910,
6.0910

■ 246.3770, 9.1240,
-0.1560

■ 95.2650, 24.2990,
5.6670

■ 70.7810, 22.7860,
5.5540

■ 47.9980, 20.6770,
5.2290

■ 26.2860, 19.8060,
4.4940

■ 8.1870, 15.7710,

6.0350

■ 0.0000, 0.0000,
0.0000

■ 172.6460, 27.6000,
6.4160

■ 172.6460, 27.6000,
6.4160

■ 160.3870, 38.6950,
9.0870

■ 184.9050, 16.5050,
3.7450

■ 148.0140, 50.1110,
11.4470

■ 197.2780, 5.0890,
1.3850

■ 135.7550, 61.2060,
14.1180

■ 209.5370, -6.0060,
-1.2860

■ 123.4960, 72.3010,
16.7890

■ 221.7960,
-17.1010, -3.9570

■ 111.2370, 83.3960,
19.4600

■ 234.1690,
-28.5170, -6.3170

■ 98.8640, 94.8120,
21.8200

■ 239.4520,
-30.9920, -11.0240

■ 86.0180, 106.1820,
25.0140

■ 79.4810, 112.1880,
26.3000

Harmonies

Analogous

The Analogous color harmony consists of three colors that are next to each other on the color wheel.



173.1820, 23.3350, 12.1270



172.6460, 27.6000, 6.4160



171.3480, 25.2630, -0.7930

Triad

The Triadic color harmony groups three colors that are evenly spaced from another and form a triangle on the color wheel.



172.6460, 27.6000, 6.4160



166.3260, -13.2020, -14.0500



170.0490, -18.8910, 6.4610

Complementary

The Complementary color scheme is a pair of colors which are on the opposite of each other on the color wheel.



172.6460, 27.6000, 6.4160



183.3540, -27.6000, -6.4160

Split Complementary

Split-complementary colors differ from the complementary color scheme. The scheme consists of three colors, the original color and two neighbors of the complement color.



167.2600, -30.0310, -0.9030



172.6460, 27.6000, 6.4160



164.8500, -26.3610, -12.3530

Square

The Square scheme is like the rectangle color scheme, but the four colors are evenly spaced on the color wheel.



172.6460, 27.6000, 6.4160



167.8780, 2.7990, -12.1850



164.7770, -33.2850, -8.0130



172.8230, -3.3950, 11.9730

Rectangle

The Rectangle color scheme consists of four colors that form a rectangle on the color wheel.



172.6460, 27.6000, 6.4160



170.6630, 19.7620, -5.7260



164.7770, -33.2850, -8.0130



169.1300, -23.6130, 3.9310

Sweetspot

The Sweet Spot groups the original color and five complimentary colors.



172.6460, 27.6000, 6.4160



244.1430, 9.9030, 2.2470



172.8520, 15.9970, 23.9730



121.4630, 6.0060, 1.2860



0.0000, 0.0000, 0.0000



128.0000, -0.0000, -0.0000

Same Dimension

The Same Dimension uses a secret algorithm to generate beautiful new colors.



172.6460, 27.6000, 6.4160



208.7680, 41.9960, 9.8360



187.3210, 20.7250, -6.6590



95.5770, 5.6850, 1.5970



64.8960, 91.7860, 21.5940



14.8840, 20.9980, 4.9180

Inverse Universe

The Inverse Universe completely reimagines the original color for something new.



183.3540, -27.6000, -6.4160



225.2320, -41.9960, -9.8360



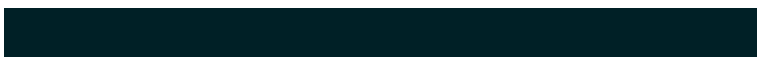
169.2660, -21.0000, 6.1360



97.8360, -5.4100, -1.0740



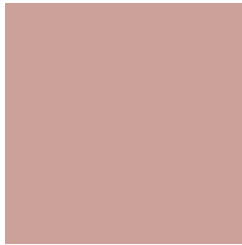
100.5170, -91.5110, -21.0710



23.1160, -20.9980, -4.9180

Previews

White Background



This preview shows how the YIQ color 172.6460, 27.6000, 6.4160 looks on a white background.

Color Contrast Check

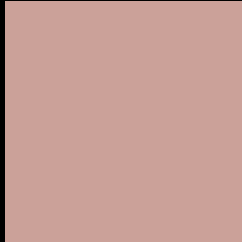
Large Text (above 18pt) WCAG AA × Fail

Any Text WCAG AA × Fail

Large Text (above 18pt) WCAG AAA × Fail

Any Text WCAG AAA × Fail

Black Background



This preview shows how the YIQ color 172.6460, 27.6000, 6.4160 looks on a black background.

Color Contrast Check

Large Text (above 18pt) WCAG AA ✓ Pass

Any Text WCAG AA ✓ Pass

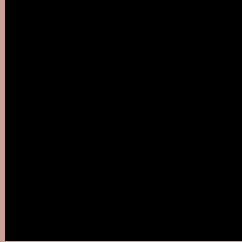
Large Text (above 18pt) WCAG AAA ✓ Pass

Any Text WCAG AAA ✓ Pass

If you want to check with other color combinations, try the [Color Contrast Checker](#).

YIQ 172.6460, 27.6000, 6.4160

Background



This preview shows how black text looks on a background with the YIQ color 172.6460, 27.6000, 6.4160.



This preview shows how white text looks on a background with the YIQ color 172.6460, 27.6000,

Color Blindness Simulation

Color vision deficiency is a very complex topic, and I could not describe the different causes any better than Wikipedia does, so if you want to learn more, you should check out their [article about color blindness](#).

Dichromacy



Original Color

172.6460, 27.6000, 6.4160

Protanopia

170.7250, 8.0240, -2.2480

Deuteranopia

172.1890, 21.4570, 2.1050



Tritanopia

173.5350, 23.8390, 14.0070

Trichromacy



Original Color

172.6460, 27.6000, 6.4160

Protanomaly

171.4270, 14.8550, 0.6070

Deuteranomaly

172.4990, 23.5200, 3.2640

Tritanomaly

173.0250, 25.2150, 11.0950

Monochromacy



Original Color

172.6460, 27.6000, 6.4160

Achromatopsia

173.0000, -0.0000, 0.0000

Achromatomaly

173.1430, 9.9030, 2.2470

CSS Examples

Text

The CSS property to change the color of the text to YIQ 172.6460, 27.6000, 6.4160 is called "color". The color property can be set on classes, ids or directly on the HTML element.

This example shows how text in the color `rgb(203, 161, 153)` looks like.

```
.text, #text, p{  
    color:rgb(203, 161, 153)  
}
```

If you want to add a text shadow in that color use the text-shadow property, you can generate a text shadow directly with our [CSS Text Shadow Generator](#).

Here you see how black text with a 4 pixel rgb(203, 161, 153) colored shadow looks like.

```
.shadow{ text-shadow: 4px 4px 2px rgb(203, 161, 153) }
```

Border

The CSS property to change the border of an element to YIQ 172.6460, 27.6000, 6.4160 is called "border". The border property can be set on classes, ids or directly on the HTML element.

This example shows the color as border, it can be applied via the CSS property "border" or "border-color".

```
.border, #border, table{ border:4px solid rgb(203, 161, 153) }
```


If only the border color should be changed use the property `border-color`.

```
.border{ border-color:rgb(203, 161, 153) }
```

If you want to add a box shadow in that color use:

Here you see how a box with a 4 pixel `rgb(203, 161, 153)` colored shadow looks like.

```
.boxshadow{ -moz-box-shadow:4px 4px 4px  
4px rgb(203, 161, 153); -webkit-box-  
shadow:4px 4px 4px 4px rgb(203, 161, 153);  
box-shadow:4px 4px 4px 4px rgb(203, 161,  
153) }
```

Background

The CSS property to change the background color of an element to YIQ 172.6460, 27.6000, 6.4160 is called "background". The background property can be set on classes, ids or directly on the HTML element.

```
.background, #background, body{  
background: rgb(203, 161, 153) }
```

If only the background color should be changed can be used:

```
.background{ background-color: rgb(203,  
161, 153) }
```

This example shows the color as background, it is applied via the CSS property "background".

To optimize and compress your CSS code, you can use our [online CSS compressor and optimizer](#) based on csstidy. If you want to create a linear or radial gradient as background or border, check our [CSS Gradient Generator](#).

Hey! You found this booklet interesting? Support Converting Colors with the new Membership Option!

The pro membership hides all ads, plus gives you double the colors in the color bucket, and more awesome pro features!

[Learn more, Memberships starting at \\$2.50/m!](#)

**Follow me
on Twitter!**

@ConvertingColor