

Converting Colors

YIQ(172.7580, 12.4250, 0.5930)

Have a look what the booklet for
YIQ(172.7580, 12.4250, 0.5930)
contains.

YIQ(172.7580, 12.4250, 0.5930)	3
<i>Conversions</i>	4
<i>Details</i>	6
<i>Harmonies</i>	12
<i>Previews</i>	24
<i>Color Blindness Simulation</i>	28
<i>CSS Examples</i>	31

Color

**YIQ(172.7580, 12.4250,
0.5930)**

Conversions

Conversions Part 1

Format	Color
Hex	B9A9A0
RGB	185, 169, 160
RGB Percent	73%, 66%, 63%
CMY	0.2745, 0.3373, 0.3725
CMYK	0.00, 0.09, 0.14, 0.27
HSL	22°, 15%, 68%
HSV	22°, 14%, 73%
XYZ	40.5427, 41.2273, 39.0851
YIQ	172.7580, 12.4250, 0.5930

Conversions

Conversions Part 2

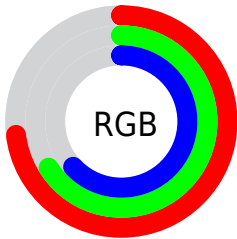
Format	Color
RYB	185, 174, 160
Decimal	12167584
CIELab	70.33, 4.25, 6.71
CIElCh	70, 7.945, 57.677
Yxy	41.2273, 0.3355, 0.3411
Android (android.graphics.Color)	4290357664 (0xFFB9A9A0)
YUV	172.7580, -6.2897, 10.7362
Hunter-Lab	64.2085, 0.3441, 8.8548

Details

The YIQ color $172.7580, 12.4250, 0.5930$ is a light color, and the websafe version is hex 999999 . A complement of this color would be $172.2420, -12.4250, -0.5930$, and the grayscale version is $173.0000, -0.0000, 0.0000$.

A 20% lighter version of the original color is $228.0570, 13.0210, 0.8050$, and $120.5730, 11.5080, 0.6920$ is the 20% darker color. If you saturate the color by 10%, you get $163.6620, 21.5030, 1.2710$, and if you desaturate by 10%, it is $181.9680, 3.0260, 0.2260$.

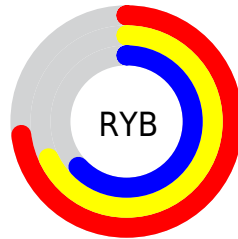
Distribution



Red (73%)

Green (66%)

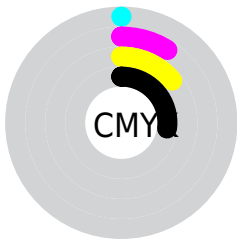
Blue (63%)



Red (73%)

Yellow (68%)

Blue (63%)

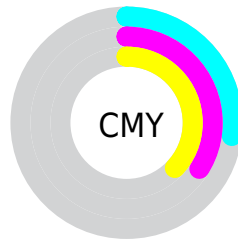


Cyan (0%)

Magenta (9%)

Yellow (14%)

Black (27%)



Cyan (27%)

Magenta (34%)

Yellow (37%)

Brightness & Saturation Gradients

These gradients show how the YIQ color 172.7580, 12.4250, 0.5930 changes by changing the brightness by 10 percent. The first figure shows a shift by +10% for each color and the second figure -10%.

Similar to the brightness gradients but the following saturation gradients show a change of the YIQ color 172.7580, 12.4250, 0.5930 by changing the saturation by 10% instead.

■ 172.7580, 12.4250,
0.5930

■ 172.7580, 12.4250,
0.5930

255.0000, -0.0000,
-0.0000

■ 146.4590, 11.8290,
0.3810

■ 228.0570, 13.0210,
0.8050

■ 120.5730, 11.5080,
0.6920

■ 252.4580, 4.4020,
-2.6860

■ 95.2740, 10.9120,
0.4800

■ 71.9750, 10.3160,
0.2680

■ 49.6760, 9.7200,
0.0560

■ 28.4910, 8.8030,
0.1550

■ 3.8870, 7.7480,

2.7560

■ 0.0000, 0.0000,
0.0000

■ 172.7580, 12.4250,
0.5930

■ 172.7580, 12.4250,
0.5930

■ 163.6620, 21.5030,
1.2710

■ 181.9680, 3.0260,
0.2260

■ 154.4520, 30.9020,
1.6380

■ 191.0640, -6.0520,
-0.4520

■ 145.3560, 39.9800,
2.3160

■ 200.2740,
-15.4510, -0.8190

■ 136.7330, 49.1040,
2.1600

■ 208.7830,
-24.2540, -0.9740

■ 127.6370, 58.1820,
2.8380

■ 217.9930,
-33.6530, -1.3410

■ 118.4270, 67.5810,
3.2050

■ 225.2650,
-37.5950, -6.9950

■ 109.3310, 76.6590,
3.8830

■ 232.3090,
-40.8950, -13.2710

■ 100.1210, 86.0580,
4.2500

■ 234.0700,
-41.7200, -14.8400

■ 94.0570, 92.1100,
4.7020

Harmonies

Analogous

The Analogous color harmony consists of three colors that are next to each other on the color wheel.



173.7520, 12.5620, 3.6180



172.7580, 12.4250, 0.5930



171.9100, 8.9410, -2.3470

Triad

The Triadic color harmony groups three colors that are evenly spaced from another and form a triangle on the color wheel.



172.7580, 12.4250, 0.5930



169.4500, -10.3150, -5.7950



172.6070, -3.0270, 5.3010

Complementary

The Complementary color scheme is a pair of colors which are on the opposite of each other on the color wheel.



172.7580, 12.4250, 0.5930



172.2420, -12.4250, -0.5930

Split Complementary

Split-complementary colors differ from the complementary color scheme. The scheme consists of three colors, the original color and two neighbors of the complement color.



171.7910, -9.5370, 2.1350



172.7580, 12.4250, 0.5930



169.6500, -13.7540, -4.0420

Square

The Square scheme is like the rectangle color scheme, but the four colors are evenly spaced on the color wheel.



172.7580, 12.4250, 0.5930



169.8590, -4.2170, -6.1770



170.6440, -13.6170, -1.0170



173.2550, 3.8960, 6.4880

Rectangle

The Rectangle color scheme consists of four colors that form a rectangle on the color wheel.



172.7580, 12.4250, 0.5930



171.2900, 4.8150, -4.6650



170.6440, -13.6170, -1.0170



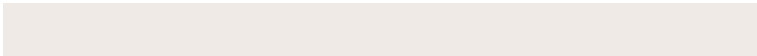
172.4110, -5.4110, 4.4530

Sweetspot

The Sweet Spot groups the original color and five complimentary colors.



172.7580, 12.4250, 0.5930



235.3380, 4.8600, 0.0280



169.2990, 9.7640, 10.2760



116.9680, 3.0260, 0.2260



247.0000, -0.0000, -0.0000



120.0000, -0.0000, -0.0000

Same Dimension

The Same Dimension uses a secret algorithm to generate beautiful new colors.



172.7580, 12.4250, 0.5930



220.8790, 19.3940, 0.9460



179.8020, 9.1250, -5.6830



87.4520, 4.5390, 0.3390



79.5160, 77.5760, 3.7840



14.2420, 13.9380, 0.7060

Inverse Universe

The Inverse Universe completely reimagines the original color for something new.



172.2420, -12.4250, -0.5930



220.1210, -19.3940, -0.9460



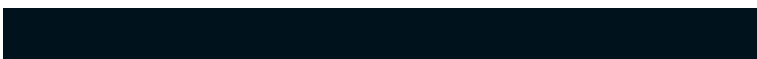
165.1980, -9.1250, 5.6830



87.5480, -4.5390, -0.3390



76.4840, -77.5760, -3.7840



13.7580, -13.9380, -0.7060

Previews

White Background



This preview shows how the YIQ color 172.7580, 12.4250, 0.5930 looks on a white background.

Color Contrast Check

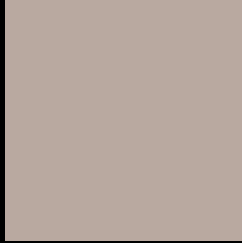
Large Text (above 18pt) WCAG AA × Fail

Any Text WCAG AA × Fail

Large Text (above 18pt) WCAG AAA × Fail

Any Text WCAG AAA × Fail

Black Background



This preview shows how the YIQ color 172.7580, 12.4250, 0.5930 looks on a black background.

Color Contrast Check

Large Text (above 18pt) WCAG AA ✓ Pass

Any Text WCAG AA ✓ Pass

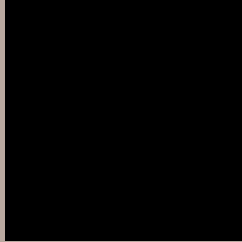
Large Text (above 18pt) WCAG AAA ✓ Pass

Any Text WCAG AAA ✓ Pass

If you want to check with other color combinations, try the [Color Contrast Checker](#).

YIQ 172.7580, 12.4250, 0.5930

Background



This preview shows how black text looks on a background with the YIQ color 172.7580, 12.4250, 0.5930.



This preview shows how white text looks on a background with the YIQ color 172.7580, 12.4250,

0.5930.

Color Blindness Simulation

Color vision deficiency is a very complex topic, and I could not describe the different causes any better than Wikipedia does, so if you want to learn more, you should check out their [article about color blindness](#).

Dichromacy



Original Color

172.7580, 12.4250, 0.5930

Protanopia

171.9530, 7.3820, -1.6260

Deuteranopia

173.5030, 17.6970, 4.1690



Tritanopia

174.0600, 8.9390, 8.7070

Trichromacy



Original Color

172.7580, 12.4250, 0.5930

Protanomaly

172.2630, 9.4450, -0.4670

Deuteranomaly

173.1930, 15.6340, 3.0100

Tritanomaly

173.5500, 10.3150, 5.7950

Monochromacy



Original Color

172.7580, 12.4250, 0.5930

Achromatopsia

173.0000, -0.0000, 0.0000

Achromatomaly

173.0390, 4.2640, -0.1840

CSS Examples

Text

The CSS property to change the color of the text to YIQ 172.7580, 12.4250, 0.5930 is called "color". The color property can be set on classes, ids or directly on the HTML element.

This example shows how text in the color `rgb(185, 169, 160)` looks like.

```
.text, #text, p{  
    color:rgb(185, 169, 160)  
}
```

If you want to add a text shadow in that color use the text-shadow property, you can generate a text shadow directly with our [CSS Text Shadow Generator](#).

Here you see how black text with a 4 pixel rgb(185, 169, 160) colored shadow looks like.

```
.shadow{ text-shadow: 4px 4px 2px rgb(185, 169, 160) }
```

Border

The CSS property to change the border of an element to YIQ 172.7580, 12.4250, 0.5930 is called "border". The border property can be set on classes, ids or directly on the HTML element.

This example shows the color as border, it can be applied via the CSS property "border" or "border-color".

```
.border, #border, table{ border:4px solid rgb(185, 169, 160) }
```


If only the border color should be changed use the property `border-color`.

```
.border{ border-color:rgb(185, 169, 160) }
```

If you want to add a box shadow in that color use:

Here you see how a box with a 4 pixel `rgb(185, 169, 160)` colored shadow looks like.

```
.boxshadow{ -moz-box-shadow:4px 4px 4px  
4px rgb(185, 169, 160); -webkit-box-  
shadow:4px 4px 4px 4px rgb(185, 169, 160);  
box-shadow:4px 4px 4px 4px rgb(185, 169,  
160) }
```

Background

The CSS property to change the background color of an element to YIQ 172.7580, 12.4250, 0.5930 is called "background". The background property can be set on classes, ids or directly on the HTML element.

```
.background, #background, body{  
background: rgb(185, 169, 160) }
```

If only the background color should be changed can be used:

```
.background{ background-color: rgb(185,  
169, 160) }
```

This example shows the color as background, it is applied via the CSS property "background".

To optimize and compress your CSS code, you can use our [online CSS compressor and optimizer](#) based on csstidy. If you want to create a linear or radial gradient as background or border, check our [CSS Gradient Generator](#).

Hey! You found this booklet interesting? Support Converting Colors with the new Membership Option!

The pro membership hides all ads, plus gives you double the colors in the color bucket, and more awesome pro features!

[Learn more, Memberships starting at \\$2.50/m!](#)

**Follow me
on Twitter!**

@ConvertingColor