

Converting Colors

YIQ(172.9670, 31.1300, 8.5220)

Have a look what the booklet for
YIQ(172.9670, 31.1300, 8.5220)
contains.

YIQ(172.9670, 31.1300, 8.5220)	3
<i>Conversions</i>	4
<i>Details</i>	6
<i>Harmonies</i>	12
<i>Previews</i>	24
<i>Color Blindness Simulation</i>	28
<i>CSS Examples</i>	31

Color

**YIQ(172.9670, 31.1300,
8.5220)**

Conversions

Conversions Part 1

Format	Color
Hex	D09F99
RGB	208, 159, 153
RGB Percent	82%, 62%, 60%
CMY	0.1842, 0.3765, 0.3999
CMYK	0.00, 0.24, 0.26, 0.18
HSL	6°, 37%, 71%
HSV	6°, 26%, 82%
XYZ	44.1676, 40.5042, 35.6414
YIQ	172.9670, 31.1300, 8.5220

Conversions

Conversions Part 2

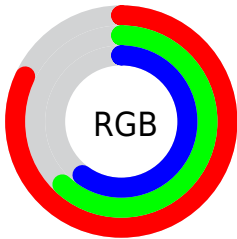
Format	Color
R_{YB}	208, 160, 153
Decimal	13672345
CIE _{Lab}	69.83, 17.34, 10.14
CIE _{LCh}	70, 20.084, 30.330
Yxy	40.5042, 0.3671, 0.3367
Android (android.graphics.Color)	4291862425 (0xFFD09F99)
YUV	172.9670, -9.8437, 30.7239
Hunter-Lab	63.6429, 12.5021, 11.3464

Details

The YIQ color $172.9670, 31.1300, 8.5220$ is a light color, and the websafe version is hex $CC9999$. A complement of this color would be $188.0330, -31.1300, -8.5220$, and the grayscale version is $173.0000, -0.0000, 0.0000$.

A 20% lighter version of the original color is $225.4610, 26.6830, 6.5150$, and $120.1840, 29.0210, 8.1970$ is the 20% darker color. If you saturate the color by 10%, you get $159.4200, 43.0960, 11.9280$, and if you desaturate by 10%, it is $186.5140, 19.1640, 5.1160$.

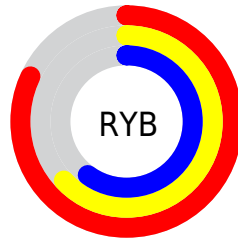
Distribution



Red (82%)

Green (62%)

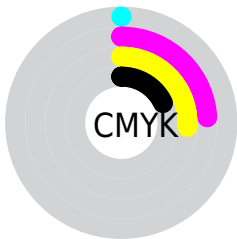
Blue (60%)



Red (82%)

Yellow (63%)

Blue (60%)

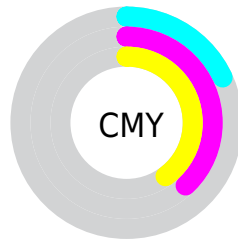


Cyan (0%)

Magenta (24%)

Yellow (26%)

Black (18%)



Cyan (18%)


Magenta (38%)


Yellow (40%)

Brightness & Saturation Gradients


These gradients show how the YIQ color 172.9670, 31.1300, 8.5220 changes by changing the brightness by 10 percent. The first figure shows a shift by +10% for each color and the second figure -10%.


Similar to the brightness gradients but the following saturation gradients show a change of the YIQ color 172.9670, 31.1300, 8.5220 by changing the saturation by 10% instead.


 172.9670, 31.1300,
8.5220


 172.9670, 31.1300,
8.5220


255.0000, -0.0000,
-0.0000


 146.3690, 29.9380,
8.0980


 225.4610, 26.6830,
6.5150


 120.1840, 29.0210,
8.1970

 245.2030, 9.6740,
0.8900

 95.2870, 27.2330,
7.5610

 70.8030, 25.7200,
7.4480

 48.0200, 23.6110,
7.1230

 26.0090, 22.1440,
6.1760

 9.0840, 17.5590,

6.6710

■ 0.0000, 0.0000,
0.0000

■ 172.9670, 31.1300,
8.5220

■ 172.9670, 31.1300,
8.5220

■ 159.4200, 43.0960,
11.9280

■ 186.5140, 19.1640,
5.1160

■ 146.4600, 54.7870,
14.8110

■ 199.4740, 7.4730,
2.2330

■ 133.0270, 66.4320,
18.5280

■ 212.9070, -4.1720,
-1.4840

■ 120.0670, 78.1230,
21.4110

■ 225.8670,
-15.8630, -4.3670

■ 106.5200, 90.0890,
24.8170

■ 239.1860,
-27.1870, -8.3950

■ 93.5600, 101.7800,
27.7000

■ 240.9470,
-28.0120, -9.9640

■ 80.0130, 113.7460,
31.1060

■ 75.6930, 117.6430,
32.0670

Harmonies

Analogous

The Analogous color harmony consists of three colors that are next to each other on the color wheel.



173.8340, 24.4350, 14.2190



172.9670, 31.1300, 8.5220



171.4410, 29.4350, 0.6910

Triad

The Triadic color harmony groups three colors that are evenly spaced from another and form a triangle on the color wheel.



172.9670, 31.1300, 8.5220



165.4570, -12.1930, -15.8170



169.4120, -24.3470, 6.2210

Complementary

The Complementary color scheme is a pair of colors which are on the opposite of each other on the color wheel.



172.9670, 31.1300, 8.5220



188.0330, -31.1300, -8.5220

Split Complementary

Split-complementary colors differ from the complementary color scheme. The scheme consists of three colors, the original color and two neighbors of the complement color.



165.4980, -36.6330, -2.4010



172.9670, 31.1300, 8.5220



163.6000, -28.6530, -14.8690

Square

The Square scheme is like the rectangle color scheme, but the four colors are evenly spaced on the color wheel.



172.9670, 31.1300, 8.5220



167.9060, 5.5960, -13.3160



162.9720, -38.3280, -10.2320



172.4960, -6.7880, 12.8920

Rectangle

The Rectangle color scheme consists of four colors that form a rectangle on the color wheel.



172.9670, 31.1300, 8.5220



170.2290, 23.9800, -5.0760



162.9720, -38.3280, -10.2320



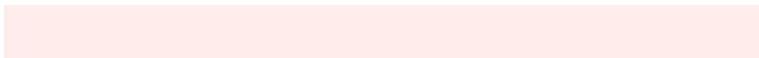
168.0800, -29.3440, 3.1680

Sweetspot

The Sweet Spot groups the original color and five complimentary colors.



172.9670, 31.1300, 8.5220



242.1540, 11.3700, 3.1940



175.1450, 16.7300, 27.2100



119.4740, 7.4730, 2.2330



0.0000, 0.0000, 0.0000



128.0000, -0.0000, -0.0000

Same Dimension

The Same Dimension uses a secret algorithm to generate beautiful new colors.



172.9670, 31.1300, 8.5220



202.8010, 46.3970, 12.6770



188.8160, 23.7050, -5.5990



97.8760, 6.2810, 1.8090



60.7980, 95.1780, 26.2020



14.6070, 23.3360, 6.6000

Inverse Universe

The Inverse Universe completely reimagines the original color for something new.



188.0330, -31.1300, -8.5220



225.1990, -46.3970, -12.6770



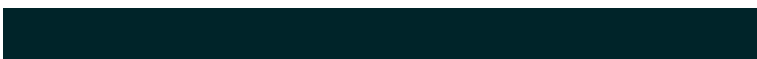
172.1840, -23.7050, 5.5990



100.5370, -6.0060, -1.2860



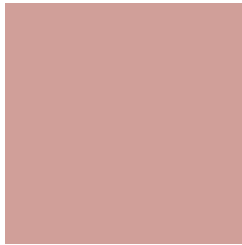
107.2020, -95.1780, -26.2020



25.8060, -23.0610, -6.0770

Previews

White Background



This preview shows how the YIQ color 172.9670, 31.1300, 8.5220 looks on a white background.

Color Contrast Check

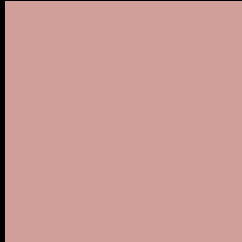
Large Text (above 18pt) WCAG AA × Fail

Any Text WCAG AA × Fail

Large Text (above 18pt) WCAG AAA × Fail

Any Text WCAG AAA × Fail

Black Background



This preview shows how the YIQ color 172.9670, 31.1300, 8.5220 looks on a black background.

Color Contrast Check

Large Text (above 18pt) WCAG AA ✓ Pass

Any Text WCAG AA ✓ Pass

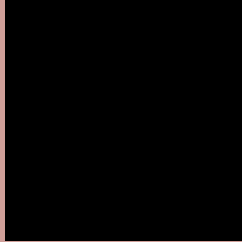
Large Text (above 18pt) WCAG AAA ✓ Pass

Any Text WCAG AAA ✓ Pass

If you want to check with other color combinations, try the [Color Contrast Checker](#).

YIQ 172.9670, 31.1300, 8.5220

Background



This preview shows how black text looks on a background with the YIQ color 172.9670, 31.1300, 8.5220.



This preview shows how white text looks on a background with the YIQ color 172.9670, 31.1300,

Color Blindness Simulation

Color vision deficiency is a very complex topic, and I could not describe the different causes any better than Wikipedia does, so if you want to learn more, you should check out their [article about color blindness](#).

Dichromacy



Original Color

172.9670, 31.1300, 8.5220

Protanopia

170.8390, 7.7030, -1.9370

Deuteranopia

172.1890, 21.4570, 2.1050



Tritanopia

174.2150, 27.7360, 14.9680

Trichromacy



Original Color

172.9670, 31.1300, 8.5220

Protanomaly

171.5520, 16.0010, 1.8650

Deuteranomaly

172.5100, 24.9870, 4.2110

Tritanomaly

173.8190, 28.7910, 12.3670

Monochromacy



Original Color

172.9670, 31.1300, 8.5220

Achromatopsia

173.0000, -0.0000, 0.0000

Achromatomaly

173.1540, 11.3700, 3.1940

CSS Examples

Text

The CSS property to change the color of the text to YIQ 172.9670, 31.1300, 8.5220 is called "color". The color property can be set on classes, ids or directly on the HTML element.

This example shows how text in the color `rgb(208, 159, 153)` looks like.

```
.text, #text, p{  
    color:rgb(208, 159, 153)  
}
```

If you want to add a text shadow in that color use the text-shadow property, you can generate a text shadow directly with our [CSS Text Shadow Generator](#).

Here you see how black text with a 4 pixel rgb(208, 159, 153) colored shadow looks like.

```
.shadow{ text-shadow: 4px 4px 2px rgb(208, 159, 153) }
```

Border

The CSS property to change the border of an element to YIQ 172.9670, 31.1300, 8.5220 is called "border". The border property can be set on classes, ids or directly on the HTML element.

This example shows the color as border, it can be applied via the CSS property "border" or "border-color".

```
.border, #border, table{ border:4px solid rgb(208, 159, 153) }
```


If only the border color should be changed use the property `border-color`.

```
.border{ border-color:rgb(208, 159, 153) }
```

If you want to add a box shadow in that color use:

Here you see how a box with a 4 pixel `rgb(208, 159, 153)` colored shadow looks like.

```
.boxshadow{ -moz-box-shadow:4px 4px 4px  
4px rgb(208, 159, 153); -webkit-box-  
shadow:4px 4px 4px 4px rgb(208, 159, 153);  
box-shadow:4px 4px 4px 4px rgb(208, 159,  
153) }
```

Background

The CSS property to change the background color of an element to YIQ 172.9670, 31.1300, 8.5220 is called "background". The background property can be set on classes, ids or directly on the HTML element.

```
.background, #background, body{  
background: rgb(208, 159, 153) }
```

If only the background color should be changed can be used:

```
.background{ background-color: rgb(208,  
159, 153) }
```

This example shows the color as background, it is applied via the CSS property "background".

To optimize and compress your CSS code, you can use our [online CSS compressor and optimizer](#) based on csstidy. If you want to create a linear or radial gradient as background or border, check our [CSS Gradient Generator](#).

Hey! You found this booklet interesting? Support Converting Colors with the new Membership Option!

The pro membership hides all ads, plus gives you double the colors in the color bucket, and more awesome pro features!

[Learn more, Memberships starting at \\$2.50/m!](#)

**Follow me
on Twitter!**

@ConvertingColor