

# Converting Colors

YIQ(173.0870, 58.1760, 36.0000)

Have a look what the booklet for  
YIQ(173.0870, 58.1760, 36.0000)  
contains.

<b>YIQ(173.0870, 58.1760, 36.0000)</b> .....	3
<b><i>Conversions</i></b> .....	4
<b><i>Details</i></b> .....	6
<b><i>Harmonies</i></b> .....	12
<b><i>Previews</i></b> .....	24
<b><i>Color Blindness Simulation</i></b> .....	28
<b><i>CSS Examples</i></b> .....	31

# Color

**YIQ(173.0870, 58.1760,  
36.0000)**

# Conversions

## Conversions Part 1

Format	Color
Hex	FB86AA
RGB	251, 134, 170
RGB Percent	98%, 53%, 67%
CMY	0.0154, 0.4747, 0.3331
CMYK	0.00, 0.47, 0.32, 0.02
HSL	342°, 94%, 75%
HSV	342°, 47%, 98%
XYZ	55.5902, 40.4643, 42.9364
YIQ	173.0870, 58.1760, 36.0000

# Conversions

## Conversions Part 2

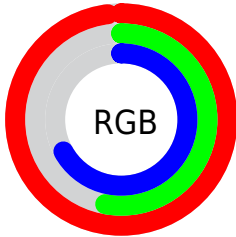
Format	Color
<b>R<sub>YB</sub></b>	251, 134, 170
Decimal	16484010
CIE Lab	69.80, 48.32, 1.27
CIE LCh	70, 48.335, 1.502
Yxy	40.4643, 0.4000, 0.2911
Android (android.graphics.Color)	4294674090 (0xFFFB86AA)
YUV	173.0870, -1.5219, 68.3297
Hunter-Lab	63.6116, 44.6710, 4.5087

# Details

The YIQ color **173.0870, 58.1760, 36.0000** is a light color, and the websafe version is hex **FF99CC**. A complement of this color would be **211.9130, -58.1760, -36.0000**, and the grayscale version is **173.0000, -0.0000, 0.0000**.

A 20% lighter version of the original color is **212.8380, 27.7800, 25.1880**, and **117.8200, 54.5540, 35.5620** is the 20% darker color. If you saturate the color by 10%, you get **156.4740, 70.5080, 43.7880**, and if you desaturate by 10%, it is **189.7000, 45.8440, 28.2120**.

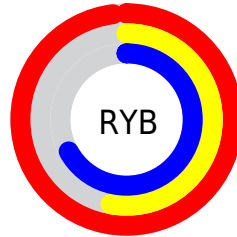
# Distribution



Red (98%)

Green (53%)

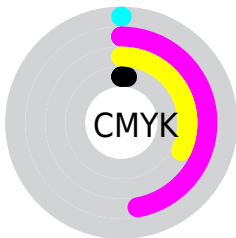
Blue (67%)



Red (98%)

Yellow (53%)

Blue (67%)

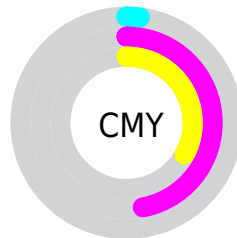


Cyan (0%)

Magenta (47%)

Yellow (32%)

Black (2%)



Cyan (2%)

Magenta (47%)

Yellow (33%)

# Brightness & Saturation Gradients

These gradients show how the YIQ color 173.0870, 58.1760, 36.0000 changes by changing the brightness by 10 percent. The first figure shows a shift by +10% for each color and the second figure -10%.

Similar to the brightness gradients but the following saturation gradients show a change of the YIQ color 173.0870, 58.1760, 36.0000 by changing the saturation by 10% instead.



173.0870, 58.1760,  
36.0000

173.0870, 58.1760,  
36.0000

255.0000, -0.0000,  
-0.0000

145.3040, 56.0670,  
35.6750

212.8380, 27.7800,  
25.1880

117.8200, 54.5540,  
35.5620

233.1670, 10.4960,  
19.0400

90.4500, 52.7200,  
35.7600

250.3040, 2.2000,  
4.1840

61.5470, 51.0690,  
38.1490

37.1660, 47.7680,  
37.4000

26.6990, 38.4170,  
25.1450

16.9720, 32.7340,

12.4940

■ 3.2890, 6.5560,  
2.3320

■ 0.0000, 0.0000,  
0.0000

■ 173.0870, 58.1760,  
36.0000

■ 173.0870, 58.1760,  
36.0000

■ 156.4740, 70.5080,  
43.7880

■ 189.7000, 45.8440,  
28.2120

■ 139.7470, 83.1610,  
51.2650

■ 206.4270, 33.1910,  
20.7350

■ 123.1340, 95.4930,  
59.0530

■ 223.0400, 20.8590,  
12.9470

■ 106.5210,  
107.8250, 66.8410

■ 239.7670, 8.2060,  
5.4700

■ 89.2070, 120.7530,  
74.8410

■ 253.8040, -2.3840,  
-0.8480

■ 83.8270, 124.8790,  
77.1590

# Harmonies

## Analogous

The Analogous color harmony consists of three colors that are next to each other on the color wheel.



175.5090, 27.8690, 40.1010



173.0870, 58.1760, 36.0000



171.1200, 70.6040, 20.0120

# Triad

The Triadic color harmony groups three colors that are evenly spaced from another and form a triangle on the color wheel.



173.0870, 58.1760, 36.0000



161.6990, 9.7720, -33.9400



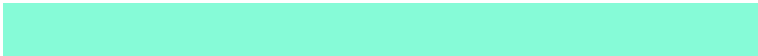
137.3400, -130.4370, -20.4610

# Complementary

The Complementary color scheme is a pair of colors which are on the opposite of each other on the color wheel.



173.0870, 58.1760, 36.0000



211.9130, -58.1760, -36.0000

# Split Complementary

Split-complementary colors differ from the complementary color scheme. The scheme consists of three colors, the original color and two neighbors of the complement color.



137.2140, -121.8150, -33.5510



173.0870, 58.1760, 36.0000



153.2280, -37.3140, -39.6340

# Square

The Square scheme is like the rectangle color scheme, but the four colors are evenly spaced on the color wheel.



173.0870, 58.1760, 36.0000



166.6280, 44.0650, -22.1670



132.7850, -107.9660, -47.7580



160.8090, -70.7010, 9.2910



# Rectangle

The Rectangle color scheme consists of four colors that form a rectangle on the color wheel.



173.0870, 58.1760, 36.0000



170.0790, 68.6810, 5.2970



132.7850, -107.9660, -47.7580



138.0750, -128.3730, -24.8290

# Sweetspot

The Sweet Spot groups the original color and five complimentary colors.



173.0870, 58.1760, 36.0000



231.0180, 17.9250, 11.0530



171.2580, 10.1230, 53.3470



113.3760, 10.8650, 6.8410



0.0000, 0.0000, 0.0000



128.0000, -0.0000, -0.0000



# Same Dimension

The Same Dimension uses a secret algorithm to generate beautiful new colors.



173.0870, 58.1760, 36.0000



159.7730, 71.1040, 44.0000



181.3100, 63.9570, 13.8210



116.3430, 6.4640, 4.0000



63.1230, 94.0260, 58.1060



20.4050, 30.2570, 18.8410



# Inverse Universe

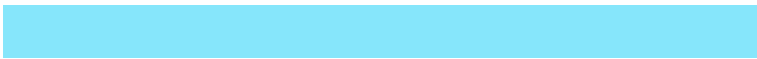
The Inverse Universe completely reimagines the original color for something new.



173.0870, 58.1760, 36.0000



159.7730, 71.1040, 44.0000



203.6900, -63.9570, -13.8210



116.3430, 6.4640, 4.0000



63.1230, 94.0260, 58.1060



20.4050, 30.2570, 18.8410



# Previews

## White Background



This preview shows how the YIQ color 173.0870, 58.1760, 36.0000 looks on a white background.

## Color Contrast Check

Large Text (above 18pt) WCAG AA × Fail

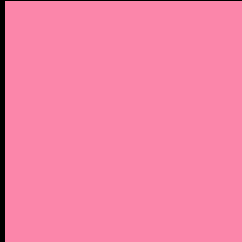
Any Text WCAG AA × Fail

Large Text (above 18pt) WCAG AAA × Fail

Any Text WCAG AAA × Fail



# Black Background



This preview shows how the YIQ color 173.0870, 58.1760, 36.0000 looks on a black background.

## Color Contrast Check

Large Text (above 18pt) WCAG AA ✓ Pass

Any Text WCAG AA ✓ Pass

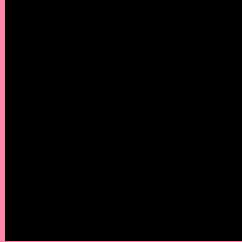
Large Text (above 18pt) WCAG AAA ✓ Pass

Any Text WCAG AAA ✓ Pass

If you want to check with other color combinations, try the [Color Contrast Checker](#).

# YIQ 173.0870, 58.1760, 36.0000

## Background



This preview shows how black text looks on a background with the YIQ color 173.0870, 58.1760, 36.0000.



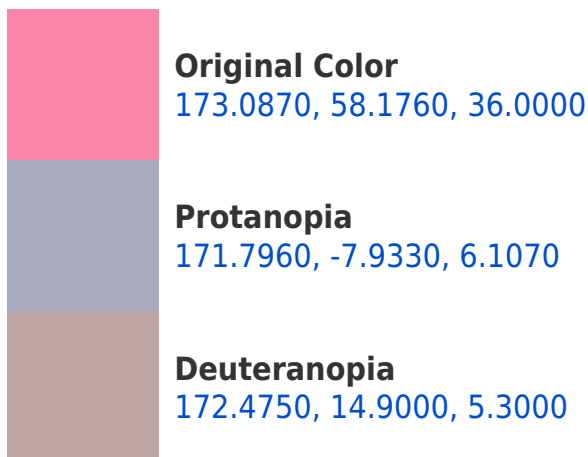
This preview shows how white text looks on a background with the YIQ color 173.0870, 58.1760,

36.0000.

# Color Blindness Simulation

Color vision deficiency is a very complex topic, and I could not describe the different causes any better than Wikipedia does, so if you want to learn more, you should check out their [article about color blindness](#).

## Dichromacy

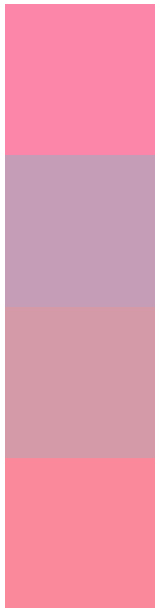




## Tritanopia

172.3290, 62.9460, 26.6420

# Trichromacy



## Original Color

173.0870, 58.1760, 36.0000

## Protanomaly

172.2230, 16.0900, 16.7780

## Deuteranomaly

172.8240, 30.3950, 16.3390

## Tritanomaly

172.9530, 61.2490, 29.8650

# Monochromacy



## Original Color

173.0870, 58.1760, 36.0000

## Achromatopsia

173.0000, -0.0000, 0.0000

## Achromatomaly

173.0400, 20.8590, 12.9470

# CSS Examples

## Text

The CSS property to change the color of the text to YIQ 173.0870, 58.1760, 36.0000 is called "color". The color property can be set on classes, ids or directly on the HTML element.

This example shows how text in the color `rgb(251, 134, 170)` looks like.

```
.text, #text, p{  
    color:rgb(251, 134, 170)  
}
```

If you want to add a text shadow in that color use the text-shadow property, you can generate a text shadow directly with our [CSS Text Shadow Generator](#).

Here you see how black text with a 4 pixel rgb(251, 134, 170) colored shadow looks like.

```
.shadow{ text-shadow: 4px 4px 2px rgb(251, 134, 170) }
```

## Border

The CSS property to change the border of an element to YIQ 173.0870, 58.1760, 36.0000 is called "border". The border property can be set on classes, ids or directly on the HTML element.

This example shows the color as border, it can be applied via the CSS property "border" or "border-color".

```
.border, #border, table{ border:4px solid rgb(251, 134, 170) }
```



If only the border color should be changed use the property border-color.

```
.border{ border-color:rgb(251, 134, 170) }
```

If you want to add a box shadow in that color use:

Here you see how a box with a 4 pixel rgb(251, 134, 170) colored shadow looks like.

```
.boxshadow{ -moz-box-shadow:4px 4px 4px  
4px rgb(251, 134, 170); -webkit-box-  
shadow:4px 4px 4px 4px rgb(251, 134, 170);  
box-shadow:4px 4px 4px 4px rgb(251, 134,  
170) }
```

# Background

The CSS property to change the background color of an element to YIQ 173.0870, 58.1760, 36.0000 is called "background". The background property can be set on classes, ids or directly on the HTML element.

```
.background, #background, body{  
background: rgb(251, 134, 170) }
```

If only the background color should be changed can be used:

```
.background{ background-color: rgb(251,  
134, 170) }
```

This example shows the color as background, it is applied via the CSS property "background".

To optimize and compress your CSS code, you can use our [online CSS compressor and optimizer](#) based on csstidy. If you want to create a linear or radial gradient as background or border, check our [CSS Gradient Generator](#).

Hey! You found this booklet interesting? Support Converting Colors with the new Membership Option!

The pro membership hides all ads, plus gives you double the colors in the color bucket, and more awesome pro features!

**[Learn more, Memberships starting at \\$2.50/m!](#)**

**Follow me  
on Twitter!**

@ConvertingColor