

Converting Colors

YIQ(174.0060, 26.2260, -1.7260)

Have a look what the booklet for
YIQ(174.0060, 26.2260, -1.7260)
contains.

YIQ(174.0060, 26.2260, -1.7260)	3
<i>Conversions</i>	4
<i>Details</i>	6
<i>Harmonies</i>	12
<i>Previews</i>	24
<i>Color Blindness Simulation</i>	28
<i>CSS Examples</i>	31

Color

**YIQ(174.0060, 26.2260,
-1.7260)**

Conversions

Conversions Part 1

Format	Color
Hex	C6A88E
RGB	198, 168, 142
RGB Percent	78%, 66%, 56%
CMY	0.2235, 0.3412, 0.4430
CMYK	0.00, 0.15, 0.28, 0.22
HSL	28°, 33%, 67%
HSV	28°, 28%, 78%
XYZ	42.1776, 41.9622, 31.4802
YIQ	174.0060, 26.2260, -1.7260

Conversions

Conversions Part 2

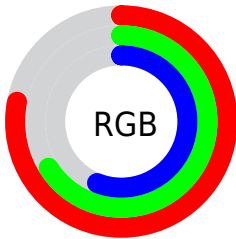
Format	Color
R _Y B	198, 191, 142
Decimal	13019278
CIE Lab	70.84, 7.04, 17.48
CIE LCh	71, 18.850, 68.061
Yxy	41.9622, 0.3648, 0.3629
Android (android.graphics.Color)	4291209358 (0xFFC6A88E)
YUV	174.0060, -15.7790, 21.0427
Hunter-Lab	64.7782, 2.8607, 16.5317

Details

The YIQ color $174.0060, 26.2260, -1.7260$ is a light color, and the websafe version is hex $CC9999$. A complement of this color would be $165.9940, -26.2260, 1.7260$, and the grayscale version is $174.0000, -0.0000, -0.0000$.

A 20% lighter version of the original color is $229.4900, 27.7390, -1.6130$, and $121.3370, 23.7960, -1.7400$ is the 20% darker color. If you saturate the color by 10%, you get $165.2690, 35.6710, -2.1930$, and if you desaturate by 10%, it is $182.7430, 16.7810, -1.2590$.

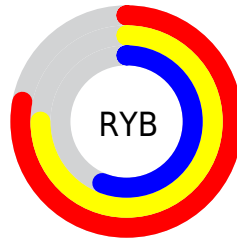
Distribution



Red (78%)

Green (66%)

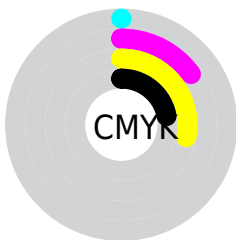
Blue (56%)



Red (78%)

Yellow (75%)

Blue (56%)

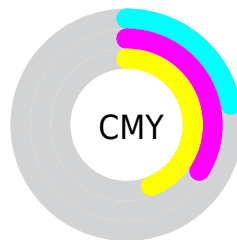


Cyan (0%)

Magenta (15%)

Yellow (28%)

Black (22%)



Cyan (22%)


Magenta (34%)


Yellow (44%)

Brightness & Saturation Gradients


These gradients show how the YIQ color 174.0060, 26.2260, -1.7260 changes by changing the brightness by 10 percent. The first figure shows a shift by +10% for each color and the second figure -10%.


Similar to the brightness gradients but the following saturation gradients show a change of the YIQ color 174.0060, 26.2260, -1.7260 by changing the saturation by 10% instead.


 174.0060, 26.2260,
-1.7260


 174.0060, 26.2260,
-1.7260


255.0000, -0.0000,
-0.0000


 147.4080, 25.0340,
-2.1500


 229.4900, 27.7390,
-1.6130


 121.3370, 23.7960,
-1.7400


 249.7050, 10.7760,
-8.0720

 96.1520, 22.8790,
-1.6410

 254.6580, 0.9630,
-0.9330

 72.6680, 21.3660,
-1.7540

 49.8850, 19.2570,
-2.0790

 28.1300, 19.9450,
-3.5350

 5.9800, 11.9200,

4.2400

■ 0.0000, 0.0000,
0.0000

■ 174.0060, 26.2260,
-1.7260

■ 174.0060, 26.2260,
-1.7260

■ 165.2690, 35.6710,
-2.1930

■ 182.7430, 16.7810,
-1.2590

■ 157.1190, 44.8410,
-3.1830

■ 190.8930, 7.6110,
-0.2690

■ 148.4960, 53.9650,
-3.3390

■ 199.5160, -1.5130,
-0.1130

■ 140.3460, 63.1350,
-4.3290

■ 207.6660,
-10.6830, 0.8770

■ 131.6090, 72.5800,
-4.7960

■ 216.4030,
-20.1280, 1.3440

■ 122.8720, 82.0250,
-5.2630

■ 224.4560,
-27.6470, -0.0550

■ 114.7220, 91.1950,
-6.2530

■ 230.3260,
-30.3970, -5.2850

■ 113.2060, 92.7080,
-6.1400

■ 236.7830,
-33.4220, -11.0380

■ 237.9570,
-33.9720, -12.0840

Harmonies

Analogous

The Analogous color harmony consists of three colors that are next to each other on the color wheel.



175.3150, 30.0300, 6.4300



174.0060, 26.2260, -1.7260



172.4020, 16.0030, -9.1890

Triad

The Triadic color harmony groups three colors that are evenly spaced from another and form a triangle on the color wheel.



174.0060, 26.2260, -1.7260



166.4690, -29.6620, -13.1020



175.2470, -1.6530, 13.4430

Complementary

The Complementary color scheme is a pair of colors which are on the opposite of each other on the color wheel.



174.0060, 26.2260, -1.7260



165.9940, -26.2260, 1.7260

Split Complementary

Split-complementary colors differ from the complementary color scheme. The scheme consists of three colors, the original color and two neighbors of the complement color.



172.9890, -18.6620, 7.8180



174.0060, 26.2260, -1.7260



167.2220, -36.0360, -7.7160

Square

The Square scheme is like the rectangle color scheme, but the four colors are evenly spaced on the color wheel.



174.0060, 26.2260, -1.7260



168.1300, -15.5860, -14.8980



170.0040, -32.1860, -0.3940



176.7990, 14.3480, 15.3080

Rectangle

The Rectangle color scheme consists of four colors that form a rectangle on the color wheel.



174.0060, 26.2260, -1.7260



170.7320, 6.1460, -12.2700



170.0040, -32.1860, -0.3940



174.7840, -7.6590, 12.1570

Sweetspot

The Sweet Spot groups the original color and five complimentary colors.



174.0060, 26.2260, -1.7260



246.2630, 9.4450, -0.4670



162.2780, 23.4250, 21.5130



122.4090, 6.0980, -0.3820



0.0000, 0.0000, 0.0000



128.0000, -0.0000, -0.0000

Same Dimension

The Same Dimension uses a secret algorithm to generate beautiful new colors.



174.0060, 26.2260, -1.7260



218.0800, 40.5770, -2.9990



189.8550, 18.8010, -15.8470



95.0390, 4.2640, -0.1840



93.3490, 76.2480, -5.1920



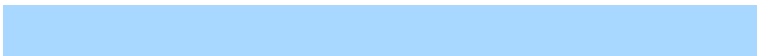
20.7430, 16.7810, -1.2590

Inverse Universe

The Inverse Universe completely reimagines the original color for something new.



165.9940, -26.2260, 1.7260



205.5070, -40.8520, 2.4760



150.1450, -18.8010, 15.8470



93.9610, -4.2640, 0.1840



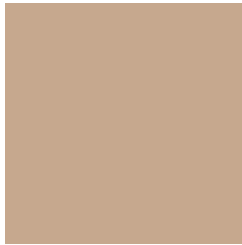
70.2380, -76.5230, 4.6690



15.2570, -16.7810, 1.2590

Previews

White Background



This preview shows how the YIQ color 174.0060, 26.2260, -1.7260 looks on a white background.

Color Contrast Check

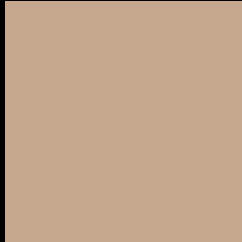
Large Text (above 18pt) WCAG AA × Fail

Any Text WCAG AA × Fail

Large Text (above 18pt) WCAG AAA × Fail

Any Text WCAG AAA × Fail

Black Background



This preview shows how the YIQ color 174.0060, 26.2260, -1.7260 looks on a black background.

Color Contrast Check

Large Text (above 18pt) WCAG AA ✓ Pass

Any Text WCAG AA ✓ Pass

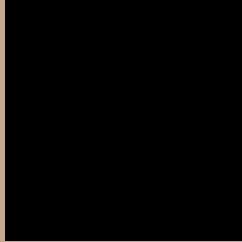
Large Text (above 18pt) WCAG AAA ✓ Pass

Any Text WCAG AAA ✓ Pass

If you want to check with other color combinations, try the [Color Contrast Checker](#).

YIQ 174.0060, 26.2260, -1.7260

Background



This preview shows how black text looks on a background with the YIQ color 174.0060, 26.2260, -1.7260.



This preview shows how white text looks on a background with the YIQ color 174.0060, 26.2260, -1.7260.

-1.7260.

Color Blindness Simulation

Color vision deficiency is a very complex topic, and I could not describe the different causes any better than Wikipedia does, so if you want to learn more, you should check out their [article about color blindness](#).

Dichromacy



Original Color

174.0060, 26.2260, -1.7260

Protanopia

172.7980, 14.9480, -6.5880

Deuteranopia

174.3160, 28.2890, -0.5670



Tritanopia

176.1430, 19.0710, 12.3110

Trichromacy



Original Color

174.0060, 26.2260, -1.7260

Protanomaly

173.0050, 18.7990, -4.7930

Deuteranomaly

174.0170, 27.6930, -0.7790

Tritanomaly

175.6500, 21.7770, 7.3210

Monochromacy



Original Color

174.0060, 26.2260, -1.7260

Achromatopsia

174.0000, -0.0000, -0.0000

Achromatomaly

174.1490, 9.7660, -0.7780

CSS Examples

Text

The CSS property to change the color of the text to YIQ 174.0060, 26.2260, -1.7260 is called "color". The color property can be set on classes, ids or directly on the HTML element.

This example shows how text in the color `rgb(198, 168, 142)` looks like.

```
.text, #text, p{  
    color:rgb(198, 168, 142)  
}
```

If you want to add a text shadow in that color use the text-shadow property, you can generate a text shadow directly with our [CSS Text Shadow Generator](#).

Here you see how black text with a 4 pixel rgb(198, 168, 142) colored shadow looks like.

```
.shadow{ text-shadow: 4px 4px 2px rgb(198, 168, 142) }
```

Border

The CSS property to change the border of an element to YIQ 174.0060, 26.2260, -1.7260 is called "border". The border property can be set on classes, ids or directly on the HTML element.

This example shows the color as border, it can be applied via the CSS property "border" or "border-color".

```
.border, #border, table{ border:4px solid rgb(198, 168, 142) }
```


If only the border color should be changed use the property `border-color`.

```
.border{ border-color:rgb(198, 168, 142) }
```

If you want to add a box shadow in that color use:

Here you see how a box with a 4 pixel `rgb(198, 168, 142)` colored shadow looks like.

```
.boxshadow{ -moz-box-shadow:4px 4px 4px  
4px rgb(198, 168, 142); -webkit-box-  
shadow:4px 4px 4px 4px rgb(198, 168, 142);  
box-shadow:4px 4px 4px 4px rgb(198, 168,  
142) }
```

Background

The CSS property to change the background color of an element to YIQ 174.0060, 26.2260, -1.7260 is called "background". The background property can be set on classes, ids or directly on the HTML element.

```
.background, #background, body{  
background: rgb(198, 168, 142) }
```

If only the background color should be changed can be used:

```
.background{ background-color: rgb(198,  
168, 142) }
```

This example shows the color as background, it is applied via the CSS property "background".

To optimize and compress your CSS code, you can use our [online CSS compressor and optimizer](#) based on csstidy. If you want to create a linear or radial gradient as background or border, check our [CSS Gradient Generator](#).

Hey! You found this booklet interesting? Support Converting Colors with the new Membership Option!

The pro membership hides all ads, plus gives you double the colors in the color bucket, and more awesome pro features!

[Learn more, Memberships starting at \\$2.50/m!](#)

**Follow me
on Twitter!**

@ConvertingColor