

Converting Colors

YIQ(174.1460, 23.0160, 1.3840)

Have a look what the booklet for
YIQ(174.1460, 23.0160, 1.3840)
contains.

YIQ(174.1460, 23.0160, 1.3840)	3
<i>Conversions</i>	4
<i>Details</i>	6
<i>Harmonies</i>	12
<i>Previews</i>	24
<i>Color Blindness Simulation</i>	28
<i>CSS Examples</i>	31

Color

**YIQ(174.1460, 23.0160,
1.3840)**

Conversions

Conversions Part 1

Format	Color
Hex	C5A797
RGB	197, 167, 151
RGB Percent	77%, 65%, 59%
CMY	0.2274, 0.3451, 0.4077
CMYK	0.00, 0.15, 0.23, 0.23
HSL	21°, 28%, 68%
HSV	21°, 23%, 77%
XYZ	42.4345, 41.7405, 35.1096
YIQ	174.1460, 23.0160, 1.3840

Conversions

Conversions Part 2

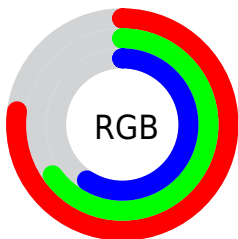
Format	Color
RYB	197, 176, 151
Decimal	12953495
CIELab	70.69, 8.48, 12.32
CIElCh	71, 14.956, 55.476
Yxy	41.7405, 0.3557, 0.3499
Android (android.graphics.Color)	4291143575 (0xFFC5A797)
YUV	174.1460, -11.4110, 20.0430
Hunter-Lab	64.6069, 4.1789, 13.0046

Details

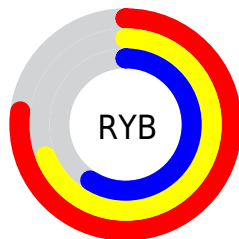
The YIQ color **174.1460, 23.0160, 1.3840** is a light color, and the websafe version is hex **CC9999**. A complement of this color would be **173.8540, -23.0160, -1.3840**, and the grayscale version is **174.0000, -0.0000, -0.0000**.

A 20% lighter version of the original color is **229.6300, 24.5290, 1.4970**, and **121.6620, 21.5030, 1.2710** is the 20% darker color. If you saturate the color by 10%, you get **164.2350, 33.0110, 1.9630**, and if you desaturate by 10%, it is **184.0570, 13.0210, 0.8050**.

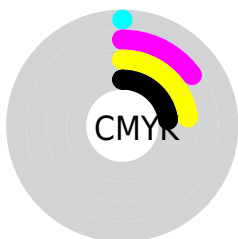
Distribution



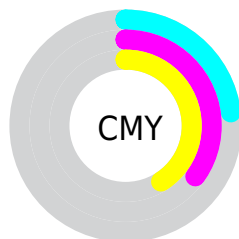
- Red (77%)
- Green (65%)
- Blue (59%)



- Red (77%)
- Yellow (69%)
- Blue (59%)



- Cyan (0%)
- Magenta (15%)
- Yellow (23%)
- Black (23%)



- Cyan (23%)
- Magenta (35%)
- Yellow (41%)

Brightness & Saturation Gradients

These gradients show how the YIQ color 174.1460, 23.0160, 1.3840 changes by changing the brightness by 10 percent. The first figure shows a shift by +10% for each color and the second figure -10%.

Similar to the brightness gradients but the following saturation gradients show a change of the YIQ color 174.1460, 23.0160, 1.3840 by changing the saturation by 10% instead.

■ 174.1460, 23.0160,
1.3840

■ 174.1460, 23.0160,
1.3840

255.0000, -0.0000,
-0.0000

■ 147.5480, 21.8240,
0.9600

■ 229.6300, 24.5290,
1.4970

■ 121.6620, 21.5030,
1.2710

■ 250.1440, 8.1620,
-4.7500

■ 96.4770, 20.5860,
1.3700

■ 72.5800, 18.7980,
0.7340

■ 50.0960, 17.2850,
0.6210

■ 28.2700, 16.7350,
-0.4250

■ 6.5780, 13.1120,

4.6640

■ 0.0000, 0.0000,
0.0000

■ 174.1460, 23.0160,
1.3840

■ 174.1460, 23.0160,
1.3840

■ 164.2350, 33.0110,
1.9630

■ 184.0570, 13.0210,
0.8050

■ 154.4380, 42.6850,
2.8530

■ 193.8540, 3.3470,
-0.0850

■ 144.5270, 52.6800,
3.4320

■ 203.7650, -6.6480,
-0.6640

■ 135.2030, 62.4000,
3.4880

■ 213.0890,
-16.3680, -0.7200

■ 125.4060, 72.0740,
4.3780

■ 223.0000,
-26.3630, -1.2990

■ 115.4950, 82.0690,
4.9570

■ 231.2010,
-31.5430, -6.5430

■ 105.5840, 92.0640,
5.5360

■ 237.6580,
-34.5680, -12.2960

■ 98.8190, 98.7120,
6.2000

Harmonies

Analogous

The Analogous color harmony consists of three colors that are next to each other on the color wheel.



175.1340, 23.2900, 7.4340



174.1460, 23.0160, 1.3840



172.6350, 16.9650, -4.5950

Triad

The Triadic color harmony groups three colors that are evenly spaced from another and form a triangle on the color wheel.



174.1460, 23.0160, 1.3840



168.3840, -19.1170, -11.4770



173.9750, -6.8790, 9.0330

Complementary

The Complementary color scheme is a pair of colors which are on the opposite of each other on the color wheel.



174.1460, 23.0160, 1.3840



173.8540, -23.0160, -1.3840

Split Complementary

Split-complementary colors differ from the complementary color scheme. The scheme consists of three colors, the original color and two neighbors of the complement color.



172.1690, -19.3490, 3.7470



174.1460, 23.0160, 1.3840



168.4850, -26.5910, -8.1830

Square

The Square scheme is like the rectangle color scheme, but the four colors are evenly spaced on the color wheel.



174.1460, 23.0160, 1.3840



169.6150, -6.6460, -11.7180



169.7610, -27.1880, -2.8680



175.4990, 6.3250, 12.0290

Rectangle

The Rectangle color scheme consists of four colors that form a rectangle on the color wheel.



174.1460, 23.0160, 1.3840



171.5200, 9.8590, -7.9730



169.7610, -27.1880, -2.8680



173.5830, -11.6470, 7.3370

Sweetspot

The Sweet Spot groups the original color and five complimentary colors.



174.1460, 23.0160, 1.3840



245.9040, 9.0780, 0.6780



168.2880, 17.4650, 19.3930



122.6370, 5.4560, 0.2400



0.0000, 0.0000, 0.0000



128.0000, -0.0000, -0.0000

Same Dimension

The Same Dimension uses a secret algorithm to generate beautiful new colors.



174.1460, 23.0160, 1.3840



219.3170, 35.7160, 2.5000



187.0600, 16.9660, -10.1220



94.4520, 4.5390, 0.3390



82.1960, 81.4730, 4.7450



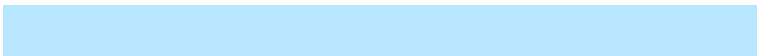
17.8080, 18.1560, 1.3560

Inverse Universe

The Inverse Universe completely reimagines the original color for something new.



173.8540, -23.0160, -1.3840



219.0960, -35.4410, -1.9770



160.9400, -16.9660, 10.1220



94.5480, -4.5390, -0.3390



81.3910, -81.7480, -5.2680



17.6050, -17.8810, -0.8330

Previews

White Background



This preview shows how the YIQ color 174.1460, 23.0160, 1.3840 looks on a white background.

Color Contrast Check

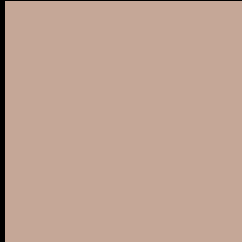
Large Text (above 18pt) WCAG AA × Fail

Any Text WCAG AA × Fail

Large Text (above 18pt) WCAG AAA × Fail

Any Text WCAG AAA × Fail

Black Background



This preview shows how the YIQ color 174.1460, 23.0160, 1.3840 looks on a black background.

Color Contrast Check

Large Text (above 18pt) WCAG AA ✓ Pass

Any Text WCAG AA ✓ Pass

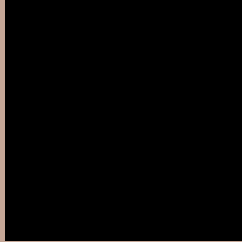
Large Text (above 18pt) WCAG AAA ✓ Pass

Any Text WCAG AAA ✓ Pass

If you want to check with other color combinations, try the [Color Contrast Checker](#).

YIQ 174.1460, 23.0160, 1.3840

Background



This preview shows how black text looks on a background with the YIQ color 174.1460, 23.0160, 1.3840.



This preview shows how white text looks on a background with the YIQ color 174.1460, 23.0160,

1.3840.

Color Blindness Simulation

Color vision deficiency is a very complex topic, and I could not describe the different causes any better than Wikipedia does, so if you want to learn more, you should check out their [article about color blindness](#).

Dichromacy



Original Color

174.1460, 23.0160, 1.3840

Protanopia

173.2260, 10.8670, -4.2130

Deuteranopia

174.4450, 23.6120, 1.5960



Tritanopia

175.5450, 17.8790, 11.8870

Trichromacy



Original Color

174.1460, 23.0160, 1.3840

Protanomaly

173.7320, 15.3140, -2.2060

Deuteranomaly

174.4450, 23.6120, 1.5960

Tritanomaly

174.8070, 19.8970, 8.3530

Monochromacy



Original Color

174.1460, 23.0160, 1.3840

Achromatopsia

174.0000, -0.0000, -0.0000

Achromatomaly

173.7190, 8.1610, 0.7770

CSS Examples

Text

The CSS property to change the color of the text to YIQ 174.1460, 23.0160, 1.3840 is called "color". The color property can be set on classes, ids or directly on the HTML element.

This example shows how text in the color `rgb(197, 167, 151)` looks like.

```
.text, #text, p{  
    color:rgb(197, 167, 151)  
}
```

If you want to add a text shadow in that color use the text-shadow property, you can generate a text shadow directly with our [CSS Text Shadow Generator](#).

Here you see how black text with a 4 pixel rgb(197, 167, 151) colored shadow looks like.

```
.shadow{ text-shadow: 4px 4px 2px rgb(197, 167, 151) }
```

Border

The CSS property to change the border of an element to YIQ 174.1460, 23.0160, 1.3840 is called "border". The border property can be set on classes, ids or directly on the HTML element.

This example shows the color as border, it can be applied via the CSS property "border" or "border-color".

```
.border, #border, table{ border:4px solid rgb(197, 167, 151) }
```


If only the border color should be changed use the property `border-color`.

```
.border{ border-color:rgb(197, 167, 151) }
```

If you want to add a box shadow in that color use:

Here you see how a box with a 4 pixel `rgb(197, 167, 151)` colored shadow looks like.

```
.boxshadow{ -moz-box-shadow:4px 4px 4px  
4px rgb(197, 167, 151); -webkit-box-  
shadow:4px 4px 4px 4px rgb(197, 167, 151);  
box-shadow:4px 4px 4px 4px rgb(197, 167,  
151) }
```

Background

The CSS property to change the background color of an element to YIQ 174.1460, 23.0160, 1.3840 is called "background". The background property can be set on classes, ids or directly on the HTML element.

```
.background, #background, body{  
background: rgb(197, 167, 151) }
```

If only the background color should be changed can be used:

```
.background{ background-color: rgb(197,  
167, 151) }
```

This example shows the color as background, it is applied via the CSS property "background".

To optimize and compress your CSS code, you can use our [online CSS compressor and optimizer](#) based on csstidy. If you want to create a linear or radial gradient as background or border, check our [CSS Gradient Generator](#).

Hey! You found this booklet interesting? Support Converting Colors with the new Membership Option!

The pro membership hides all ads, plus gives you double the colors in the color bucket, and more awesome pro features!

[Learn more, Memberships starting at \\$2.50/m!](#)

**Follow me
on Twitter!**

@ConvertingColor