

Converting Colors

YIQ(174.1560, 17.0560, -0.7360)

Have a look what the booklet for
YIQ(174.1560, 17.0560, -0.7360)
contains.

YIQ(174.1560, 17.0560, -0.7360)	3
<i>Conversions</i>	4
<i>Details</i>	6
<i>Harmonies</i>	12
<i>Previews</i>	24
<i>Color Blindness Simulation</i>	28
<i>CSS Examples</i>	31

Color

**YIQ(174.1560, 17.0560,
-0.7360)**

Conversions

Conversions Part 1

Format	Color
Hex	BEAA9A
RGB	190, 170, 154
RGB Percent	75%, 67%, 60%
CMY	0.2549, 0.3333, 0.3960
CMYK	0.00, 0.11, 0.19, 0.25
HSL	27°, 22%, 67%
HSV	27°, 19%, 75%
XYZ	41.4452, 42.0284, 36.5087
YIQ	174.1560, 17.0560, -0.7360

Conversions

Conversions Part 2

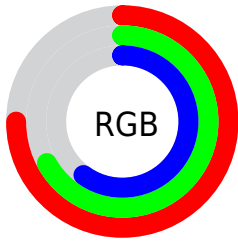
Format	Color
R _Y B	190, 183, 154
Decimal	12495514
CIE Lab	70.89, 4.63, 10.87
CIE LCh	71, 11.810, 66.942
Yxy	42.0284, 0.3454, 0.3503
Android (android.graphics.Color)	4290685594 (0xFFBEAA9A)
YUV	174.1560, -9.9369, 13.8952
Hunter-Lab	64.8293, 0.6631, 11.9914

Details

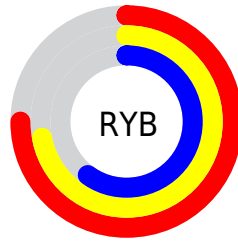
The YIQ color **174.1560, 17.0560, -0.7360** is a light color, and the websafe version is hex **999999**. A complement of this color would be **169.8440, -17.0560, 0.7360**, and the grayscale version is **174.0000, -0.0000, -0.0000**.

A 20% lighter version of the original color is **229.6400, 18.5690, -0.6230**, and **121.6720, 15.5430, -0.8490** is the 20% darker color. If you saturate the color by 10%, you get **165.5330, 26.1800, -0.8920**, and if you desaturate by 10%, it is **182.7790, 7.9320, -0.5800**.

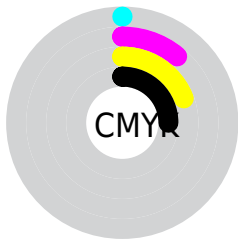
Distribution



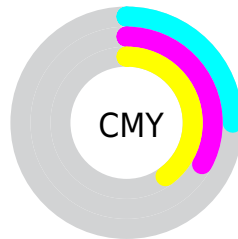
- Red (75%)
- Green (67%)
- Blue (60%)



- Red (75%)
- Yellow (72%)
- Blue (60%)



- Cyan (0%)
- Magenta (11%)
- Yellow (19%)
- Black (25%)



- Cyan (25%)
- Magenta (33%)
- Yellow (40%)

Brightness & Saturation Gradients

These gradients show how the YIQ color 174.1560, 17.0560, -0.7360 changes by changing the brightness by 10 percent. The first figure shows a shift by +10% for each color and the second figure -10%.

Similar to the brightness gradients but the following saturation gradients show a change of the YIQ color 174.1560, 17.0560, -0.7360 by changing the saturation by 10% instead.

■ 174.1560, 17.0560,
-0.7360

■ 174.1560, 17.0560,
-0.7360

255.0000, -0.0000,
-0.0000

■ 147.8570, 16.4600,
-0.9480

■ 229.6400, 18.5690,
-0.6230

■ 121.6720, 15.5430,
-0.8490

■ 252.3610, 6.0530,
-5.0750

■ 96.7860, 15.2220,
-0.5380

■ 73.1880, 14.0300,
-0.9620

■ 50.0030, 13.1130,
-0.8630

■ 29.2910, 12.2420,
-1.5980

■ 4.7840, 9.5360,

3.3920

0.0000, 0.0000,
0.0000

174.1560, 17.0560,
-0.7360

174.1560, 17.0560,
-0.7360

165.5330, 26.1800,
-0.8920

182.7790, 7.9320,
-0.5800

157.4970, 35.0290,
-1.5710

190.8150, -0.9170,
0.0990

148.8740, 44.1530,
-1.7270

199.4380,
-10.0410, 0.2550

140.8380, 53.0020,
-2.4060

207.4740,
-18.8900, 0.9340

132.2150, 62.1260,
-2.5620

216.0970,
-28.0140, 1.0900

■ 124.1790, 70.9750,
-3.2410

■ 222.6510,
-32.6900, -2.2740

■ 115.5560, 80.0990,
-3.3970

■ 229.1080,
-35.7150, -8.0270

■ 106.9330, 89.2230,
-3.5530

■ 235.5650,
-38.7400, -13.7800

■ 106.1180, 90.1400,
-3.6520

Harmonies

Analogous

The Analogous color harmony consists of three colors that are next to each other on the color wheel.



174.9870, 19.2100, 4.2820



174.1560, 17.0560, -0.7360



173.2860, 10.6380, -5.5700

Triad

The Triadic color harmony groups three colors that are evenly spaced from another and form a triangle on the color wheel.



174.1560, 17.0560, -0.7360



169.9760, -17.7880, -8.0280



175.0850, -1.3770, 8.4390

Complementary

The Complementary color scheme is a pair of colors which are on the opposite of each other on the color wheel.



174.1560, 17.0560, -0.7360



169.8440, -17.0560, 0.7360

Split Complementary

Split-complementary colors differ from the complementary color scheme. The scheme consists of three colors, the original color and two neighbors of the complement color.



173.7030, -12.1050, 4.6230



174.1560, 17.0560, -0.7360



170.2300, -21.3190, -4.6070

Square

The Square scheme is like the rectangle color scheme, but the four colors are evenly spaced on the color wheel.



174.1560, 17.0560, -0.7360



170.5270, -9.2140, -9.2300



171.6480, -19.4400, -0.1120



175.5870, 8.8930, 9.5410

Rectangle

The Rectangle color scheme consists of four colors that form a rectangle on the color wheel.



174.1560, 17.0560, -0.7360



172.2960, 4.6780, -7.6900



171.6480, -19.4400, -0.1120



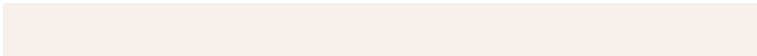
174.4050, -5.2740, 7.4780

Sweetspot

The Sweet Spot groups the original color and five complimentary colors.



174.1560, 17.0560, -0.7360



240.7080, 6.6940, -0.1700



167.0440, 15.0360, 13.8520



121.0390, 4.2640, -0.1840



252.0000, 0.0000, 0.0000



125.0000, 0.0000, 0.0000

Same Dimension

The Same Dimension uses a secret algorithm to generate beautiful new colors.



174.1560, 17.0560, -0.7360



222.3050, 26.8220, -1.5140



184.7220, 12.1060, -10.1500



90.0390, 4.2640, -0.1840



88.3320, 74.9180, -3.1140



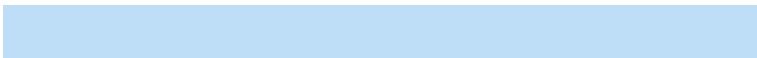
17.4870, 14.6260, -0.7500

Inverse Universe

The Inverse Universe completely reimagines the original color for something new.



169.8440, -17.0560, 0.7360



215.2820, -27.0970, 0.9910



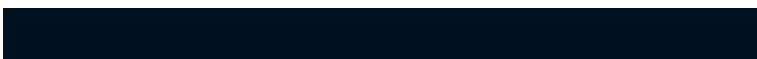
159.2780, -12.1060, 10.1500



88.9610, -4.2640, 0.1840



69.6680, -74.9180, 3.1140



13.5130, -14.6260, 0.7500

Previews

White Background



This preview shows how the YIQ color 174.1560, 17.0560, -0.7360 looks on a white background.

Color Contrast Check

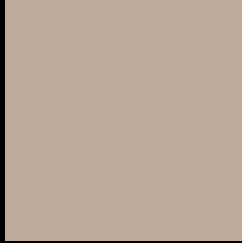
Large Text (above 18pt) WCAG AA × Fail

Any Text WCAG AA × Fail

Large Text (above 18pt) WCAG AAA × Fail

Any Text WCAG AAA × Fail

Black Background



This preview shows how the YIQ color 174.1560, 17.0560, -0.7360 looks on a black background.

Color Contrast Check

Large Text (above 18pt) WCAG AA ✓ Pass

Any Text WCAG AA ✓ Pass

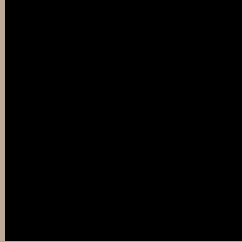
Large Text (above 18pt) WCAG AAA ✓ Pass

Any Text WCAG AAA ✓ Pass

If you want to check with other color combinations, try the [Color Contrast Checker](#).

YIQ 174.1560, 17.0560, -0.7360

Background



This preview shows how black text looks on a background with the YIQ color 174.1560, 17.0560, -0.7360.



This preview shows how white text looks on a background with the YIQ color 174.1560, 17.0560,

-0.7360.

Color Blindness Simulation

Color vision deficiency is a very complex topic, and I could not describe the different causes any better than Wikipedia does, so if you want to learn more, you should check out their [article about color blindness](#).

Dichromacy



Original Color

174.1560, 17.0560, -0.7360

Protanopia

173.4540, 10.2250, -3.5910

Deuteranopia

174.6020, 21.7320, 2.6280



Tritanopia

175.5550, 11.9190, 9.7670

Trichromacy



Original Color

174.1560, 17.0560, -0.7360

Protanomaly

173.6500, 12.6090, -2.7430

Deuteranomaly

174.2920, 19.6690, 1.4690

Tritanomaly

174.8170, 13.9370, 6.2330

Monochromacy



Original Color

174.1560, 17.0560, -0.7360

Achromatopsia

174.0000, -0.0000, -0.0000

Achromatomaly

174.4090, 6.0980, -0.3820

CSS Examples

Text

The CSS property to change the color of the text to YIQ 174.1560, 17.0560, -0.7360 is called "color". The color property can be set on classes, ids or directly on the HTML element.

This example shows how text in the color `rgb(190, 170, 154)` looks like.

```
.text, #text, p{  
    color:rgb(190, 170, 154)  
}
```

If you want to add a text shadow in that color use the text-shadow property, you can generate a text shadow directly with our [CSS Text Shadow Generator](#).

Here you see how black text with a 4 pixel rgb(190, 170, 154) colored shadow looks like.

```
.shadow{ text-shadow: 4px 4px 2px rgb(190, 170, 154) }
```

Border

The CSS property to change the border of an element to YIQ 174.1560, 17.0560, -0.7360 is called "border". The border property can be set on classes, ids or directly on the HTML element.

This example shows the color as border, it can be applied via the CSS property "border" or "border-color".

```
.border, #border, table{ border:4px solid rgb(190, 170, 154) }
```


If only the border color should be changed use the property `border-color`.

```
.border{ border-color:rgb(190, 170, 154) }
```

If you want to add a box shadow in that color use:

Here you see how a box with a 4 pixel `rgb(190, 170, 154)` colored shadow looks like.

```
.boxshadow{ -moz-box-shadow:4px 4px 4px  
4px rgb(190, 170, 154); -webkit-box-  
shadow:4px 4px 4px 4px rgb(190, 170, 154);  
box-shadow:4px 4px 4px 4px rgb(190, 170,  
154) }
```

Background

The CSS property to change the background color of an element to YIQ 174.1560, 17.0560, -0.7360 is called "background". The background property can be set on classes, ids or directly on the HTML element.

```
.background, #background, body{  
background: rgb(190, 170, 154) }
```

If only the background color should be changed can be used:

```
.background{ background-color: rgb(190,  
170, 154) }
```

This example shows the color as background, it is applied via the CSS property "background".

To optimize and compress your CSS code, you can use our [online CSS compressor and optimizer](#) based on csstidy. If you want to create a linear or radial gradient as background or border, check our [CSS Gradient Generator](#).

Hey! You found this booklet interesting? Support Converting Colors with the new Membership Option!

The pro membership hides all ads, plus gives you double the colors in the color bucket, and more awesome pro features!

[Learn more, Memberships starting at \\$2.50/m!](#)

**Follow me
on Twitter!**

@ConvertingColor