

Converting Colors

YIQ(174.6660, 42.0430, 3.4750)

Have a look what the booklet for
YIQ(174.6660, 42.0430, 3.4750)
contains.

YIQ(174.6660, 42.0430, 3.4750)	3
<i>Conversions</i>	4
<i>Details</i>	6
<i>Harmonies</i>	12
<i>Previews</i>	24
<i>Color Blindness Simulation</i>	28
<i>CSS Examples</i>	31

Color

**YIQ(174.6660, 42.0430,
3.4750)**

Conversions

Conversions Part 1

Format	Color
Hex	D9A186
RGB	217, 161, 134
RGB Percent	85%, 63%, 53%
CMY	0.1489, 0.3687, 0.4743
CMYK	0.00, 0.26, 0.38, 0.15
HSL	19°, 52%, 69%
HSV	19°, 38%, 85%
XYZ	45.6713, 41.9603, 28.2638
YIQ	174.6660, 42.0430, 3.4750

Conversions

Conversions Part 2

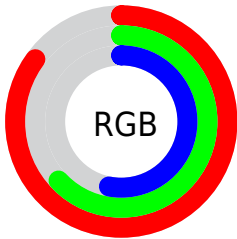
Format	Color
RYB	217, 174, 134
Decimal	14262662
CIELab	70.84, 17.30, 22.15
CIElCh	71, 28.105, 52.007
Yxy	41.9603, 0.3941, 0.3621
Android (android.graphics.Color)	4292452742 (0xFFD9A186)
YUV	174.6660, -20.0483, 37.1269
Hunter-Lab	64.7768, 12.4931, 19.4740

Details

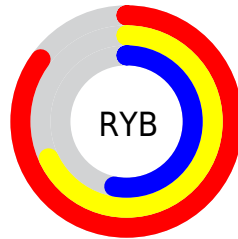
The YIQ color **174.6660, 42.0430, 3.4750** is a light color, and the websafe version is hex **CC9966**. A complement of this color would be **176.3340, -42.0430, -3.4750**, and the grayscale version is **175.0000, -0.0000, -0.0000**.

A 20% lighter version of the original color is **224.3550, 32.5530, -0.7510**, and **121.3990, 38.4210, 3.0370** is the 20% darker color. If you saturate the color by 10%, you get **163.3530, 53.2300, 4.4780**, and if you desaturate by 10%, it is **185.9790, 30.8560, 2.4720**.

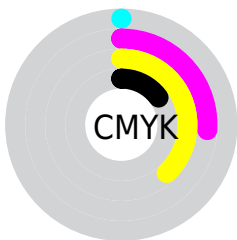
Distribution



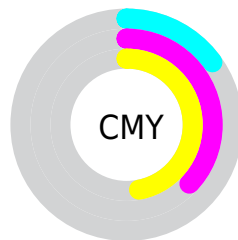
- Red (85%)
- Green (63%)
- Blue (53%)



- Red (85%)
- Yellow (68%)
- Blue (53%)



- Cyan (0%)
- Magenta (26%)
- Yellow (38%)
- Black (15%)



- Cyan (15%)
- Magenta (37%)
- Yellow (47%)

Brightness & Saturation Gradients

These gradients show how the YIQ color 174.6660, 42.0430, 3.4750 changes by changing the brightness by 10 percent. The first figure shows a shift by +10% for each color and the second figure -10%.

Similar to the brightness gradients but the following saturation gradients show a change of the YIQ color 174.6660, 42.0430, 3.4750 by changing the saturation by 10% instead.

174.6660, 42.0430,
3.4750

174.6660, 42.0430,
3.4750

255.0000, -0.0000,
-0.0000

147.8830, 39.9340,
3.1500

224.3550, 32.5530,
-0.7510

121.3990, 38.4210,
3.0370

243.9830, 15.8650,
-6.6870

96.6160, 36.3120,
2.7120

253.7460, 3.5310,
-3.4210

71.9470, 33.8820,
2.6980

48.8650, 31.1770,
2.1610

27.3100, 28.4260,
2.4580

9.8670, 19.6680,

6.9960

■ 0.0000, 0.0000,
0.0000

■ 174.6660, 42.0430,
3.4750

■ 174.6660, 42.0430,
3.4750

■ 163.3530, 53.2300,
4.4780

■ 185.9790, 30.8560,
2.4720

■ 152.7410, 63.8210,
5.2690

■ 196.5910, 20.2650,
1.6810

■ 141.4280, 75.0080,
6.2720

■ 207.9040, 9.0780,
0.6780

■ 130.1150, 86.1950,
7.2750

■ 219.2170, -2.1090,
-0.3250

■ 119.5030, 96.7860,
8.0660

■ 229.9430,
-13.0210, -0.8050

■ 108.1900,
107.9730, 9.0690

■ 240.1160,
-20.9980, -4.9180

■ 105.9730,
110.0820, 9.3940

■ 243.6380,
-22.6480, -8.0560

Harmonies

Analogous

The Analogous color harmony consists of three colors that are next to each other on the color wheel.



175.9300, 41.7200, 14.8400



174.6660, 42.0430, 3.4750



172.4270, 32.0500, -8.1580

Triad

The Triadic color harmony groups three colors that are evenly spaced from another and form a triangle on the color wheel.



174.6660, 42.0430, 3.4750



162.6650, -36.4460, -22.3180



174.6290, -17.2880, 15.9600

Complementary

The Complementary color scheme is a pair of colors which are on the opposite of each other on the color wheel.



174.6660, 42.0430, 3.4750



176.3340, -42.0430, -3.4750

Split Complementary

Split-complementary colors differ from the complementary color scheme. The scheme consists of three colors, the original color and two neighbors of the complement color.



169.0770, -42.4570, 4.0310



174.6660, 42.0430, 3.4750



160.3610, -55.8410, -17.7370

Square

The Square scheme is like the rectangle color scheme, but the four colors are evenly spaced on the color wheel.



174.6660, 42.0430, 3.4750



166.8390, -10.6330, -22.0650



162.7880, -58.1810, -8.3650



177.6770, 9.1200, 21.9520

Rectangle

The Rectangle color scheme consists of four colors that form a rectangle on the color wheel.



174.6660, 42.0430, 3.4750



170.8660, 20.2680, -14.9000



162.7880, -58.1810, -8.3650



173.0300, -25.9070, 12.4690

Sweetspot

The Sweet Spot groups the original color and five complimentary colors.



174.6660, 42.0430, 3.4750



240.6550, 14.2130, 1.2290



165.3150, 31.1710, 35.3230



119.0180, 8.7570, 0.9890



0.0000, 0.0000, 0.0000



128.0000, -0.0000, -0.0000

Same Dimension

The Same Dimension uses a secret algorithm to generate beautiful new colors.



174.6660, 42.0430, 3.4750



195.2890, 59.2820, 4.9300



198.7330, 30.7680, -17.9680



104.0500, 5.7310, 0.7630



84.5990, 87.7080, 7.3880



22.5590, 23.2910, 1.9070

Inverse Universe

The Inverse Universe completely reimagines the original color for something new.



176.3340, -42.0430, -3.4750



197.7110, -59.2820, -4.9300



152.2670, -30.7680, 17.9680



104.3630, -5.4560, -0.2400



88.4010, -87.7080, -7.3880



23.4410, -23.2910, -1.9070

Previews

White Background



This preview shows how the YIQ color 174.6660, 42.0430, 3.4750 looks on a white background.

Color Contrast Check

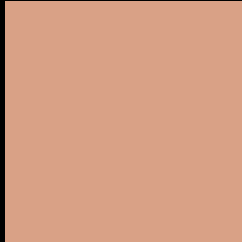
Large Text (above 18pt) WCAG AA × Fail

Any Text WCAG AA × Fail

Large Text (above 18pt) WCAG AAA × Fail

Any Text WCAG AAA × Fail

Black Background



This preview shows how the YIQ color 174.6660, 42.0430, 3.4750 looks on a black background.

Color Contrast Check

Large Text (above 18pt) WCAG AA ✓ Pass

Any Text WCAG AA ✓ Pass

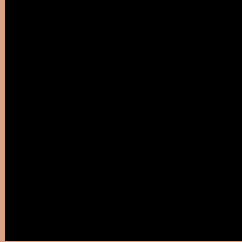
Large Text (above 18pt) WCAG AAA ✓ Pass

Any Text WCAG AAA ✓ Pass

If you want to check with other color combinations, try the [Color Contrast Checker](#).

YIQ 174.6660, 42.0430, 3.4750

Background



This preview shows how black text looks on a background with the YIQ color 174.6660, 42.0430, 3.4750.



This preview shows how white text looks on a background with the YIQ color 174.6660, 42.0430,

3.4750.

Color Blindness Simulation

Color vision deficiency is a very complex topic, and I could not describe the different causes any better than Wikipedia does, so if you want to learn more, you should check out their [article about color blindness](#).

Dichromacy



Original Color

174.6660, 42.0430, 3.4750

Protanopia

172.5270, 17.1490, -7.9310

Deuteranopia

174.1870, 32.9660, -2.7300



Tritanopia

176.5040, 34.2920, 17.3000

Trichromacy



Original Color

174.6660, 42.0430, 3.4750

Protanomaly

173.5390, 26.0430, -3.9170

Deuteranomaly

174.5080, 36.4960, -0.6240

Tritanomaly

176.0110, 36.9980, 12.3100

Monochromacy



Original Color

174.6660, 42.0430, 3.4750

Achromatopsia

175.0000, -0.0000, -0.0000

Achromatomaly

174.8400, 15.1300, 1.1300

CSS Examples

Text

The CSS property to change the color of the text to YIQ 174.6660, 42.0430, 3.4750 is called "color". The color property can be set on classes, ids or directly on the HTML element.

This example shows how text in the color `rgb(217, 161, 134)` looks like.

```
.text, #text, p{  
    color:rgb(217, 161, 134)  
}
```

If you want to add a text shadow in that color use the text-shadow property, you can generate a text shadow directly with our [CSS Text Shadow Generator](#).

Here you see how black text with a 4 pixel rgb(217, 161, 134) colored shadow looks like.

```
.shadow{ text-shadow: 4px 4px 2px rgb(217, 161, 134) }
```

Border

The CSS property to change the border of an element to YIQ 174.6660, 42.0430, 3.4750 is called "border". The border property can be set on classes, ids or directly on the HTML element.

This example shows the color as border, it can be applied via the CSS property "border" or "border-color".

```
.border, #border, table{ border:4px solid rgb(217, 161, 134) }
```


If only the border color should be changed use the property `border-color`.

```
.border{ border-color:rgb(217, 161, 134) }
```

If you want to add a box shadow in that color use:

Here you see how a box with a 4 pixel `rgb(217, 161, 134)` colored shadow looks like.

```
.boxshadow{ -moz-box-shadow:4px 4px 4px  
4px rgb(217, 161, 134); -webkit-box-  
shadow:4px 4px 4px 4px rgb(217, 161, 134);  
box-shadow:4px 4px 4px 4px rgb(217, 161,  
134) }
```

Background

The CSS property to change the background color of an element to YIQ 174.6660, 42.0430, 3.4750 is called "background". The background property can be set on classes, ids or directly on the HTML element.

```
.background, #background, body{  
background: rgb(217, 161, 134) }
```

If only the background color should be changed can be used:

```
.background{ background-color: rgb(217,  
161, 134) }
```

This example shows the color as background, it is applied via the CSS property "background".

To optimize and compress your CSS code, you can use our [online CSS compressor and optimizer](#) based on csstidy. If you want to create a linear or radial gradient as background or border, check our [CSS Gradient Generator](#).

Hey! You found this booklet interesting? Support Converting Colors with the new Membership Option!

The pro membership hides all ads, plus gives you double the colors in the color bucket, and more awesome pro features!

[Learn more, Memberships starting at \\$2.50/m!](#)

**Follow me
on Twitter!**

@ConvertingColor