

Converting Colors

YIQ(174.8510, 16.5970, 2.0770)

Have a look what the booklet for
YIQ(174.8510, 16.5970, 2.0770)
contains.

YIQ(174.8510, 16.5970, 2.0770)	3
<i>Conversions</i>	4
<i>Details</i>	6
<i>Harmonies</i>	12
<i>Previews</i>	24
<i>Color Blindness Simulation</i>	28
<i>CSS Examples</i>	31

Color

**YIQ(174.8510, 16.5970,
2.0770)**

Conversions

Conversions Part 1

Format	Color
Hex	C0A9A0
RGB	192, 169, 160
RGB Percent	75%, 66%, 63%
CMY	0.2470, 0.3373, 0.3725
CMYK	0.00, 0.12, 0.17, 0.25
HSL	17°, 20%, 69%
HSV	17°, 17%, 75%
XYZ	42.2744, 42.1191, 39.1679
YIQ	174.8510, 16.5970, 2.0770

Conversions

Conversions Part 2

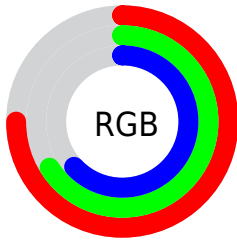
Format	Color
RYB	192, 173, 160
Decimal	12626336
CIELab	70.95, 6.87, 7.68
CIELCh	71, 10.303, 48.192
Yxy	42.1191, 0.3421, 0.3409
Android (android.graphics.Color)	4290816416 (0xFFC0A9A0)
YUV	174.8510, -7.3215, 15.0397
Hunter-Lab	64.8993, 2.6984, 9.6468

Details

The YIQ color $174.8510, 16.5970, 2.0770$ is a light color, and the websafe version is hex $CC9999$. A complement of this color would be $177.1490, -16.5970, -2.0770$, and the grayscale version is $175.0000, -0.0000, -0.0000$.

A 20% lighter version of the original color is $230.4490, 17.7890, 2.5010$, and $122.3670, 15.0840, 1.9640$ is the 20% darker color. If you saturate the color by 10%, you get $164.4670, 26.5460, 3.4900$, and if you desaturate by 10%, it is $185.2350, 6.6480, 0.6640$.

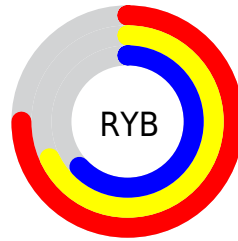
Distribution



Red (75%)

Green (66%)

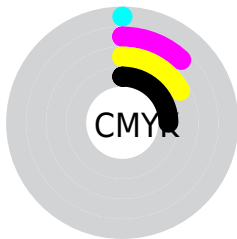
Blue (63%)



Red (75%)

Yellow (68%)

Blue (63%)

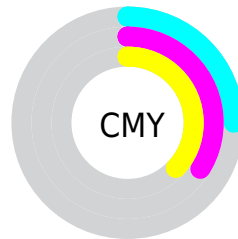


Cyan (0%)

Magenta (12%)

Yellow (17%)

Black (25%)



Cyan (25%)

Magenta (34%)

Yellow (37%)

Brightness & Saturation Gradients

These gradients show how the YIQ color 174.8510, 16.5970, 2.0770 changes by changing the brightness by 10 percent. The first figure shows a shift by +10% for each color and the second figure -10%.

Similar to the brightness gradients but the following saturation gradients show a change of the YIQ color 174.8510, 16.5970, 2.0770 by changing the saturation by 10% instead.

■ 174.8510, 16.5970,
2.0770

■ 174.8510, 16.5970,
2.0770

255.0000, -0.0000,
-0.0000

■ 148.5520, 16.0010,
1.8650

■ 230.4490, 17.7890,
2.5010

■ 122.3670, 15.0840,
1.9640

■ 252.4580, 4.4020,
-2.6860

■ 97.3670, 15.0840,
1.9640

■ 73.7690, 13.8920,
1.5400

■ 50.5840, 12.9750,
1.6390

■ 29.9860, 11.7830,
1.2150

■ 5.9800, 11.9200,

4.2400

■ 0.0000, 0.0000,
0.0000

■ 174.8510, 16.5970,
2.0770

■ 174.8510, 16.5970,
2.0770

■ 164.4670, 26.5460,
3.4900

■ 185.2350, 6.6480,
0.6640

■ 154.0830, 36.4950,
4.9030

■ 195.6190, -3.3010,
-0.7490

■ 144.1720, 46.4900,
5.4820

■ 205.5300,
-13.2960, -1.3280

■ 133.7880, 56.4390,
6.8950

■ 215.9140,
-23.2450, -2.7410

■ 123.4040, 66.3880,
8.3080

■ 226.1840,
-32.8730, -4.4650

■ 113.0200, 76.3370,
9.7210

■ 234.4020,
-36.7230, -11.7870

■ 102.6360, 86.2860,
11.1340

■ 236.1630,
-37.5480, -13.3560

■ 92.1380, 96.5560,
12.2360

■ 89.1060, 99.5820,
12.4620

Harmonies

Analogous

The Analogous color harmony consists of three colors that are next to each other on the color wheel.



175.1870, 15.7710, 6.0350



174.8510, 16.5970, 2.0770



174.0630, 12.8840, -2.2200

Triad

The Triadic color harmony groups three colors that are evenly spaced from another and form a triangle on the color wheel.



174.8510, 16.5970, 2.0770



170.6840, -11.0940, -8.1980



173.8670, -6.6950, 5.6970

Complementary

The Complementary color scheme is a pair of colors which are on the opposite of each other on the color wheel.



174.8510, 16.5970, 2.0770



177.1490, -16.5970, -2.0770

Split Complementary

Split-complementary colors differ from the complementary color scheme. The scheme consists of three colors, the original color and two neighbors of the complement color.



173.0400, -14.6720, 1.5840



174.8510, 16.5970, 2.0770



170.3290, -17.2840, -6.1480

Square

The Square scheme is like the rectangle color scheme, but the four colors are evenly spaced on the color wheel.



174.8510, 16.5970, 2.0770



171.2890, -2.6120, -7.7320



171.2520, -18.3850, -2.7130



175.4120, 2.0160, 7.5200

Rectangle

The Rectangle color scheme consists of four colors that form a rectangle on the color wheel.



174.8510, 16.5970, 2.0770



173.3290, 9.0790, -4.8490



171.2520, -18.3850, -2.7130



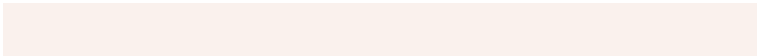
173.9590, -9.9500, 4.1140

Sweetspot

The Sweet Spot groups the original color and five complimentary colors.



174.8510, 16.5970, 2.0770



243.2350, 6.6480, 0.6640



172.1900, 11.6890, 13.9370



121.1530, 3.9430, 0.1270



252.0000, 0.0000, 0.0000



125.0000, 0.0000, 0.0000

Same Dimension

The Same Dimension uses a secret algorithm to generate beautiful new colors.



174.8510, 16.5970, 2.0770



223.1680, 25.9500, 3.2780



184.2430, 12.1970, -6.2910



91.7510, 5.1350, 0.5510



74.5540, 83.5810, 10.5970



15.1500, 17.1930, 2.2890

Inverse Universe

The Inverse Universe completely reimagines the original color for something new.



177.1490, -16.5970, -2.0770



226.8320, -25.9500, -3.2780



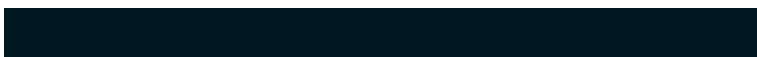
167.7570, -12.1970, 6.2910



92.2490, -5.1350, -0.5510



86.4460, -83.5810, -10.5970



17.8500, -17.1930, -2.2890

Previews

White Background



This preview shows how the YIQ color 174.8510, 16.5970, 2.0770 looks on a white background.

Color Contrast Check

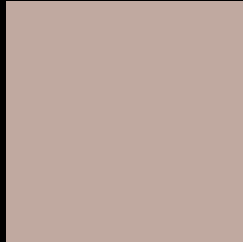
Large Text (above 18pt) WCAG AA × Fail

Any Text WCAG AA × Fail

Large Text (above 18pt) WCAG AAA × Fail

Any Text WCAG AAA × Fail

Black Background



This preview shows how the YIQ color 174.8510, 16.5970, 2.0770 looks on a black background.

Color Contrast Check

Large Text (above 18pt) WCAG AA ✓ Pass

Any Text WCAG AA ✓ Pass

Large Text (above 18pt) WCAG AAA ✓ Pass

Any Text WCAG AAA ✓ Pass

If you want to check with other color combinations, try the [Color Contrast Checker](#).

YIQ 174.8510, 16.5970, 2.0770

Background



This preview shows how black text looks on a background with the YIQ color 174.8510, 16.5970, 2.0770.



This preview shows how white text looks on a background with the YIQ color 174.8510, 16.5970,

2.0770.

Color Blindness Simulation

Color vision deficiency is a very complex topic, and I could not describe the different causes any better than Wikipedia does, so if you want to learn more, you should check out their [article about color blindness](#).

Dichromacy



Original Color

174.8510, 16.5970, 2.0770

Protanopia

173.8390, 7.7030, -1.9370

Deuteranopia

175.4600, 19.2560, 3.4480



Tritanopia

175.8540, 12.5150, 9.9790

Trichromacy



Original Color

174.8510, 16.5970, 2.0770

Protanomaly

174.3340, 10.6830, -0.8770

Deuteranomaly

175.1610, 18.6600, 3.2360

Tritanomaly

175.3440, 13.8910, 7.0670

Monochromacy



Original Color

174.8510, 16.5970, 2.0770

Achromatopsia

175.0000, -0.0000, -0.0000

Achromatomaly

175.0500, 5.7310, 0.7630

CSS Examples

Text

The CSS property to change the color of the text to YIQ 174.8510, 16.5970, 2.0770 is called "color". The color property can be set on classes, ids or directly on the HTML element.

This example shows how text in the color `rgb(192, 169, 160)` looks like.

```
.text, #text, p{  
    color:rgb(192, 169, 160)  
}
```

If you want to add a text shadow in that color use the text-shadow property, you can generate a text shadow directly with our [CSS Text Shadow Generator](#).

Here you see how black text with a 4 pixel rgb(192, 169, 160) colored shadow looks like.

```
.shadow{ text-shadow: 4px 4px 2px rgb(192, 169, 160) }
```

Border

The CSS property to change the border of an element to YIQ 174.8510, 16.5970, 2.0770 is called "border". The border property can be set on classes, ids or directly on the HTML element.

This example shows the color as border, it can be applied via the CSS property "border" or "border-color".

```
.border, #border, table{ border:4px solid rgb(192, 169, 160) }
```


If only the border color should be changed use the property `border-color`.

```
.border{ border-color:rgb(192, 169, 160) }
```

If you want to add a box shadow in that color use:

Here you see how a box with a 4 pixel `rgb(192, 169, 160)` colored shadow looks like.

```
.boxshadow{ -moz-box-shadow:4px 4px 4px  
4px rgb(192, 169, 160); -webkit-box-  
shadow:4px 4px 4px 4px rgb(192, 169, 160);  
box-shadow:4px 4px 4px 4px rgb(192, 169,  
160) }
```

Background

The CSS property to change the background color of an element to YIQ 174.8510, 16.5970, 2.0770 is called "background". The background property can be set on classes, ids or directly on the HTML element.

```
.background, #background, body{  
background: rgb(192, 169, 160) }
```

If only the background color should be changed can be used:

```
.background{ background-color: rgb(192,  
169, 160) }
```

This example shows the color as background, it is applied via the CSS property "background".

To optimize and compress your CSS code, you can use our [online CSS compressor and optimizer](#) based on csstidy. If you want to create a linear or radial gradient as background or border, check our [CSS Gradient Generator](#).

Hey! You found this booklet interesting? Support Converting Colors with the new Membership Option!

The pro membership hides all ads, plus gives you double the colors in the color bucket, and more awesome pro features!

[Learn more, Memberships starting at \\$2.50/m!](#)

**Follow me
on Twitter!**

@ConvertingColor