

Converting Colors

YIQ(175.3950, 27.0490, 10.8970)

Have a look what the booklet for
YIQ(175.3950, 27.0490, 10.8970)
contains.

YIQ(175.3950, 27.0490, 10.8970)	3
<i>Conversions</i>	4
<i>Details</i>	6
<i>Harmonies</i>	12
<i>Previews</i>	24
<i>Color Blindness Simulation</i>	28
<i>CSS Examples</i>	31

Color

**YIQ(175.3950, 27.0490,
10.8970)**

Conversions

Conversions Part 1

Format	Color
Hex	D0A1A4
RGB	208, 161, 164
RGB Percent	82%, 63%, 64%
CMY	0.1842, 0.3687, 0.3568
CMYK	0.00, 0.23, 0.21, 0.18
HSL	356°, 33%, 72%
HSV	356°, 23%, 82%
XYZ	45.4653, 41.5782, 40.7638
YIQ	175.3950, 27.0490, 10.8970

Conversions

Conversions Part 2

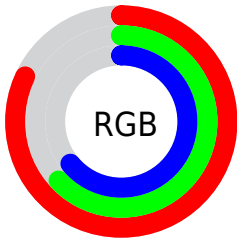
Format	Color
R _Y B	208, 161, 164
Decimal	13672868
CIE Lab	70.58, 17.85, 5.13
CIE LCh	71, 18.572, 16.031
Yxy	41.5782, 0.3557, 0.3253
Android (android.graphics.Color)	4291862948 (0xFFD0A1A4)
YUV	175.3950, -5.6177, 28.5946
Hunter-Lab	64.4812, 13.0171, 7.6548

Details

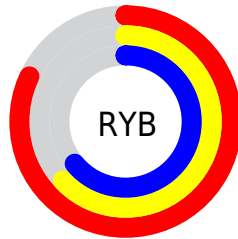
The YIQ color **175.3950, 27.0490, 10.8970** is a light color, and the websafe version is hex **CC9999**. A complement of this color would be **193.6050, -27.0490, -10.8970**, and the grayscale version is **175.0000, -0.0000, -0.0000**.

A 20% lighter version of the original color is **228.0030, 22.2810, 9.2010**, and **122.4980, 25.2610, 10.2610** is the 20% darker color. If you saturate the color by 10%, you get **160.9020, 38.9230, 15.9710**, and if you desaturate by 10%, it is **189.8880, 15.1750, 5.8230**.

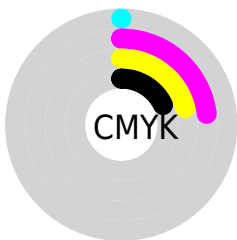
Distribution



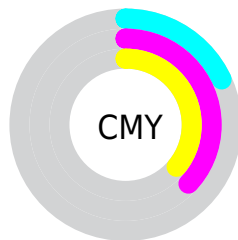
- Red (82%)
- Green (63%)
- Blue (64%)



- Red (82%)
- Yellow (63%)
- Blue (64%)



- Cyan (0%)
- Magenta (23%)
- Yellow (21%)
- Black (18%)



- Cyan (18%)
- Magenta (37%)
- Yellow (36%)

Brightness & Saturation Gradients

These gradients show how the YIQ color 175.3950, 27.0490, 10.8970 changes by changing the brightness by 10 percent. The first figure shows a shift by +10% for each color and the second figure -10%.

Similar to the brightness gradients but the following saturation gradients show a change of the YIQ color 175.3950, 27.0490, 10.8970 by changing the saturation by 10% instead.

■ 175.3950, 27.0490,
10.8970

■ 175.3950, 27.0490,
10.8970

255.0000, -0.0000,
-0.0000

■ 148.7970, 25.8570,
10.4730

■ 228.0030, 22.2810,
9.2010

■ 122.4980, 25.2610,
10.2610

■ 247.6310, 5.5930,
3.2650

■ 97.6010, 23.4730,
9.6250

■ 73.4160, 22.5560,
9.7240

■ 50.5190, 20.7680,
9.0880

■ 28.6220, 18.9800,
8.4520

■ 9.8670, 19.6680,

6.9960

■ 0.0000, 0.0000,
0.0000

■ 175.3950, 27.0490,
10.8970

■ 175.3950, 27.0490,
10.8970

■ 160.9020, 38.9230,
15.9710

■ 189.8880, 15.1750,
5.8230

■ 146.2950, 51.1180,
20.7340

■ 204.4950, 2.9800,
1.0600

■ 132.3890, 62.7170,
25.2850

■ 218.4010, -8.6190,
-3.4910

■ 117.7820, 74.9120,
30.0480

■ 233.0080,
-20.8140, -8.2540

■ 103.2890, 86.7860,
35.1220

■ 240.9470,
-28.0120, -9.9640

■ 88.6820, 98.9810,
39.8850

■ 74.1890, 110.8550,
44.9590

■ 63.6740, 119.7950,
48.1390

Harmonies

Analogous

The Analogous color harmony consists of three colors that are next to each other on the color wheel.



176.1260, 17.7410, 14.3890



175.3950, 27.0490, 10.8970



174.5490, 29.2510, 4.0270

Triad

The Triadic color harmony groups three colors that are evenly spaced from another and form a triangle on the color wheel.



175.3950, 27.0490, 10.8970



169.0020, -3.4820, -13.9940



170.3250, -28.6560, 1.7120

Complementary

The Complementary color scheme is a pair of colors which are on the opposite of each other on the color wheel.



175.3950, 27.0490, 10.8970



193.6050, -27.0490, -10.8970

Split Complementary

Split-complementary colors differ from the complementary color scheme. The scheme consists of three colors, the original color and two neighbors of the complement color.



167.1620, -35.8070, -6.3590



175.3950, 27.0490, 10.8970



167.0910, -19.8500, -14.7140

Square

The Square scheme is like the rectangle color scheme, but the four colors are evenly spaced on the color wheel.



175.3950, 27.0490, 10.8970



170.7220, 12.1060, -10.1500



165.7400, -31.8630, -11.7590



173.0820, -14.4900, 9.3020

Rectangle

The Rectangle color scheme consists of four colors that form a rectangle on the color wheel.



175.3950, 27.0490, 10.8970



173.4190, 26.5010, -1.2030



165.7400, -31.8630, -11.7590



168.8900, -31.8650, -0.7050

Sweetspot

The Sweet Spot groups the original color and five complimentary colors.



175.3950, 27.0490, 10.8970



242.4960, 10.4070, 4.1270



179.5140, 11.1370, 23.9450



120.4030, 6.2350, 2.6430



0.0000, 0.0000, 0.0000



128.0000, -0.0000, -0.0000

Same Dimension

The Same Dimension uses a secret algorithm to generate beautiful new colors.



175.3950, 27.0490, 10.8970



207.2010, 39.5190, 16.1830



186.7930, 22.5120, -0.4960



97.4030, 6.2350, 2.6430



51.4860, 96.5970, 39.0370



12.6010, 23.4730, 9.6250

Inverse Universe

The Inverse Universe completely reimagines the original color for something new.



175.3950, 27.0490, 10.8970



207.2010, 39.5190, 16.1830



182.2070, -22.5120, 0.4960



97.4030, 6.2350, 2.6430



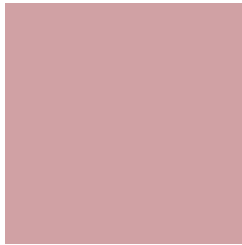
51.4860, 96.5970, 39.0370



12.6010, 23.4730, 9.6250

Previews

White Background



This preview shows how the YIQ color 175.3950, 27.0490, 10.8970 looks on a white background.

Color Contrast Check

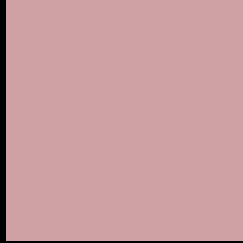
Large Text (above 18pt) WCAG AA × Fail

Any Text WCAG AA × Fail

Large Text (above 18pt) WCAG AAA × Fail

Any Text WCAG AAA × Fail

Black Background



This preview shows how the YIQ color 175.3950, 27.0490, 10.8970 looks on a black background.

Color Contrast Check

Large Text (above 18pt) WCAG AA ✓ Pass

Any Text WCAG AA ✓ Pass

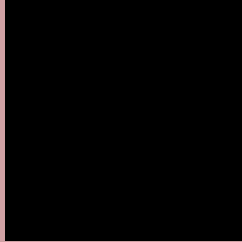
Large Text (above 18pt) WCAG AAA ✓ Pass

Any Text WCAG AAA ✓ Pass

If you want to check with other color combinations, try the [Color Contrast Checker](#).

YIQ 175.3950, 27.0490, 10.8970

Background



This preview shows how black text looks on a background with the YIQ color 175.3950, 27.0490, 10.8970.



This preview shows how white text looks on a background with the YIQ color 175.3950, 27.0490,

Color Blindness Simulation

Color vision deficiency is a very complex topic, and I could not describe the different causes any better than Wikipedia does, so if you want to learn more, you should check out their [article about color blindness](#).

Dichromacy



Original Color

175.3950, 27.0490, 10.8970

Protanopia

173.2670, 3.6220, 0.4380

Deuteranopia

174.3180, 16.7800, 4.2680



Tritanopia

176.0190, 25.3520, 14.1200

Trichromacy



Original Color

175.3950, 27.0490, 10.8970

Protanomaly

173.9800, 11.9200, 4.2400

Deuteranomaly

174.6390, 20.3100, 6.3740

Tritanomaly

175.6770, 26.3150, 13.1870

Monochromacy



Original Color

175.3950, 27.0490, 10.8970

Achromatopsia

175.0000, -0.0000, -0.0000

Achromatomaly

175.1970, 9.8110, 3.9150

CSS Examples

Text

The CSS property to change the color of the text to YIQ 175.3950, 27.0490, 10.8970 is called "color". The color property can be set on classes, ids or directly on the HTML element.

This example shows how text in the color `rgb(208, 161, 164)` looks like.

```
.text, #text, p{  
    color:rgb(208, 161, 164)  
}
```

If you want to add a text shadow in that color use the text-shadow property, you can generate a text shadow directly with our [CSS Text Shadow Generator](#).

Here you see how black text with a 4 pixel rgb(208, 161, 164) colored shadow looks like.

```
.shadow{ text-shadow: 4px 4px 2px rgb(208, 161, 164) }
```

Border

The CSS property to change the border of an element to YIQ 175.3950, 27.0490, 10.8970 is called "border". The border property can be set on classes, ids or directly on the HTML element.

This example shows the color as border, it can be applied via the CSS property "border" or "border-color".

```
.border, #border, table{ border:4px solid rgb(208, 161, 164) }
```


If only the border color should be changed use the property `border-color`.

```
.border{ border-color:rgb(208, 161, 164) }
```

If you want to add a box shadow in that color use:

Here you see how a box with a 4 pixel `rgb(208, 161, 164)` colored shadow looks like.

```
.boxshadow{ -moz-box-shadow:4px 4px 4px  
4px rgb(208, 161, 164); -webkit-box-  
shadow:4px 4px 4px 4px rgb(208, 161, 164);  
box-shadow:4px 4px 4px 4px rgb(208, 161,  
164) }
```

Background

The CSS property to change the background color of an element to YIQ 175.3950, 27.0490, 10.8970 is called "background". The background property can be set on classes, ids or directly on the HTML element.

```
.background, #background, body{  
background: rgb(208, 161, 164) }
```

If only the background color should be changed can be used:

```
.background{ background-color: rgb(208,  
161, 164) }
```

This example shows the color as background, it is applied via the CSS property "background".

To optimize and compress your CSS code, you can use our [online CSS compressor and optimizer](#) based on csstidy. If you want to create a linear or radial gradient as background or border, check our [CSS Gradient Generator](#).

Hey! You found this booklet interesting? Support Converting Colors with the new Membership Option!

The pro membership hides all ads, plus gives you double the colors in the color bucket, and more awesome pro features!

[Learn more, Memberships starting at \\$2.50/m!](#)

**Follow me
on Twitter!**

@ConvertingColor