

Converting Colors

YIQ(175.9450, 19.0280, -3.4360)

Have a look what the booklet for
YIQ(175.9450, 19.0280, -3.4360)
contains.

YIQ(175.9450, 19.0280, -3.4360)	3
<i>Conversions</i>	4
<i>Details</i>	6
<i>Harmonies</i>	12
<i>Previews</i>	24
<i>Color Blindness Simulation</i>	28
<i>CSS Examples</i>	31

Color

**YIQ(175.9450, 19.0280,
-3.4360)**

Conversions

Conversions Part 1

Format	Color
Hex	C0AD95
RGB	192, 173, 149
RGB Percent	75%, 68%, 58%
CMY	0.2470, 0.3216, 0.4156
CMYK	0.00, 0.10, 0.22, 0.25
HSL	33°, 25%, 67%
HSV	33°, 22%, 75%
XYZ	42.1089, 43.2622, 34.5749
YIQ	175.9450, 19.0280, -3.4360

Conversions

Conversions Part 2

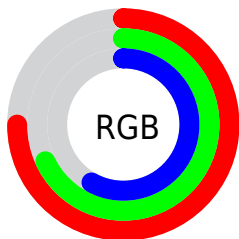
Format	Color
RYB	183, 192, 149
Decimal	12627349
CIELab	71.73, 3.01, 14.82
CIELCh	72, 15.119, 78.519
Yxy	43.2622, 0.3511, 0.3607
Android (android.graphics.Color)	4290817429 (0xFFC0AD95)
YUV	175.9450, -13.2839, 14.0802
Hunter-Lab	65.7740, -0.8277, 14.8753

Details

The YIQ color **175.9450, 19.0280, -3.4360** is a light color, and the websafe version is hex **999999**. A complement of this color would be **165.0550, -19.0280, 3.4360**, and the grayscale version is **176.0000, -0.0000, -0.0000**.

A 20% lighter version of the original color is **231.4290, 20.5410, -3.3230**, and **123.4610, 17.5150, -3.5490** is the 20% darker color. If you saturate the color by 10%, you get **169.0830, 27.3270, -5.1610**, and if you desaturate by 10%, it is **182.8070, 10.7290, -1.7110**.

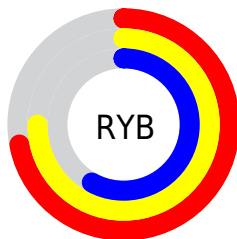
Distribution



Red (75%)

Green (68%)

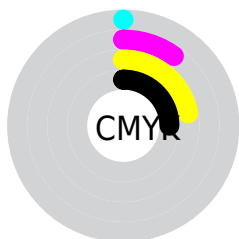
Blue (58%)



Red (72%)

Yellow (75%)

Blue (58%)

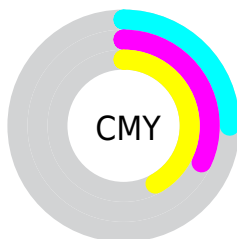


Cyan (0%)

Magenta (10%)

Yellow (22%)

Black (25%)



Cyan (25%)

Magenta (32%)

Yellow (42%)

Brightness & Saturation Gradients

These gradients show how the YIQ color 175.9450, 19.0280, -3.4360 changes by changing the brightness by 10 percent. The first figure shows a shift by +10% for each color and the second figure -10%.

Similar to the brightness gradients but the following saturation gradients show a change of the YIQ color 175.9450, 19.0280, -3.4360 by changing the saturation by 10% instead.

■ 175.9450, 19.0280,
-3.4360

■ 175.9450, 19.0280,
-3.4360

255.0000, -0.0000,
-0.0000

■ 149.0590, 18.7070,
-3.1250

■ 231.4290, 20.5410,
-3.3230

■ 123.4610, 17.5150,
-3.5490

■ 252.2640, 7.7040,
-7.4640

■ 98.2760, 16.5980,
-3.4500

■ 74.2050, 15.3600,
-3.0400

■ 51.9060, 14.7640,
-3.2520

■ 30.0800, 14.2140,
-4.2980

■ 7.1320, 8.4360,

1.3000

■ 0.0000, 0.0000,
0.0000

■ 175.9450, 19.0280,
-3.4360

■ 175.9450, 19.0280,
-3.4360

■ 169.0830, 27.3270,
-5.1610

■ 182.8070, 10.7290,
-1.7110

■ 161.6340, 35.9010,
-6.3630

■ 190.2560, 2.1550,
-0.5090

■ 154.6580, 44.5210,
-8.3990

■ 197.2320, -6.4650,
1.5270

■ 147.2090, 53.0950,
-9.6010

■ 204.6810,
-15.0390, 2.7290

■ 140.3470, 61.3940,
-11.3260

■ 211.5430,
-23.3380, 4.4540

■ 132.8980, 69.9680,
-12.5280

■ 217.9660,
-29.0230, 2.8570

■ 126.0360, 78.2670,
-14.2530

■ 222.6620,
-31.2230, -1.3270

■ 120.2170, 85.0070,
-15.2570

■ 227.9450,
-33.6980, -6.0340

■ 232.6410,
-35.8980, -10.2180

Harmonies

Analogous

The Analogous color harmony consists of three colors that are next to each other on the color wheel.



177.3850, 23.8410, 2.9530



175.9450, 19.0280, -3.4360



174.8080, 8.9880, -8.7080

Triad

The Triadic color harmony groups three colors that are evenly spaced from another and form a triangle on the color wheel.



175.9450, 19.0280, -3.4360



170.8440, -26.2240, -9.3280



178.4170, 3.6200, 11.4920

Complementary

The Complementary color scheme is a pair of colors which are on the opposite of each other on the color wheel.



175.9450, 19.0280, -3.4360



165.0550, -19.0280, 3.4360

Split Complementary

Split-complementary colors differ from the complementary color scheme. The scheme consists of three colors, the original color and two neighbors of the complement color.



176.5940, -10.1800, 8.2840



175.9450, 19.0280, -3.4360



171.9350, -27.7380, -3.9140

Square

The Square scheme is like the rectangle color scheme, but the four colors are evenly spaced on the color wheel.



175.9450, 19.0280, -3.4360



171.6400, -16.9620, -11.9860



174.1470, -22.2830, 1.8530



178.8760, 15.4490, 11.8730

Rectangle

The Rectangle color scheme consists of four colors that form a rectangle on the color wheel.



175.9450, 19.0280, -3.4360



173.1490, 0.5980, -10.8420



174.1470, -22.2830, 1.8530



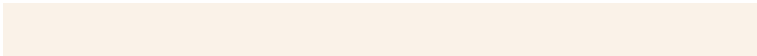
177.5520, -1.1940, 10.6300

Sweetspot

The Sweet Spot groups the original color and five complimentary colors.



175.9450, 19.0280, -3.4360



243.2520, 7.9780, -1.4140



164.0230, 19.5290, 15.0250



121.5120, 4.3100, -1.0180



252.0000, 0.0000, 0.0000



125.0000, 0.0000, 0.0000

Same Dimension

The Same Dimension uses a secret algorithm to generate beautiful new colors.



175.9450, 19.0280, -3.4360



224.6380, 30.0780, -5.4580



186.5000, 12.6110, -13.7970



93.5120, 4.3100, -1.0180



100.9690, 71.2060, -12.9380



20.4330, 14.7180, -2.4180

Inverse Universe

The Inverse Universe completely reimagines the original color for something new.



165.0550, -19.0280, 3.4360



207.3620, -30.0780, 5.4580



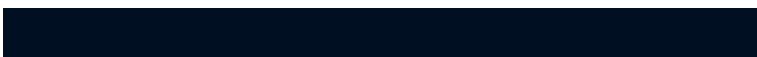
154.5000, -12.6110, 13.7970



90.4880, -4.3100, 1.0180



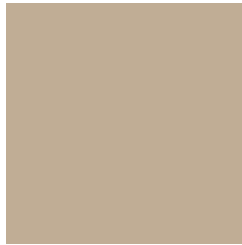
60.0310, -71.2060, 12.9380



12.5670, -14.7180, 2.4180

Previews

White Background



This preview shows how the YIQ color 175.9450, 19.0280, -3.4360 looks on a white background.

Color Contrast Check

Large Text (above 18pt) WCAG AA × Fail

Any Text WCAG AA × Fail

Large Text (above 18pt) WCAG AAA × Fail

Any Text WCAG AAA × Fail

Black Background



This preview shows how the YIQ color 175.9450, 19.0280, -3.4360 looks on a black background.

Color Contrast Check

Large Text (above 18pt) WCAG AA ✓ Pass

Any Text WCAG AA ✓ Pass

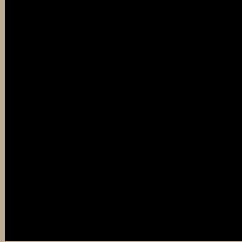
Large Text (above 18pt) WCAG AAA ✓ Pass

Any Text WCAG AAA ✓ Pass

If you want to check with other color combinations, try the [Color Contrast Checker](#).

YIQ 175.9450, 19.0280, -3.4360

Background



This preview shows how black text looks on a background with the YIQ color 175.9450, 19.0280, -3.4360.



This preview shows how white text looks on a background with the YIQ color 175.9450, 19.0280,

-3.4360.

Color Blindness Simulation

Color vision deficiency is a very complex topic, and I could not describe the different causes any better than Wikipedia does, so if you want to learn more, you should check out their [article about color blindness](#).

Dichromacy



Original Color

175.9450, 19.0280, -3.4360

Protanopia

175.1400, 13.9850, -5.6550

Deuteranopia

176.7010, 25.7670, 1.0870



Tritanopia

177.9680, 12.1940, 10.2900

Trichromacy



Original Color

175.9450, 19.0280, -3.4360

Protanomaly

175.4500, 16.0480, -4.4960

Deuteranomaly

176.0920, 23.1080, -0.2840

Tritanomaly

177.4750, 14.9000, 5.3000

Monochromacy



Original Color

175.9450, 19.0280, -3.4360

Achromatopsia

176.0000, -0.0000, -0.0000

Achromatomaly

176.0670, 7.0610, -1.3150

CSS Examples

Text

The CSS property to change the color of the text to YIQ 175.9450, 19.0280, -3.4360 is called "color". The color property can be set on classes, ids or directly on the HTML element.

This example shows how text in the color `rgb(192, 173, 149)` looks like.

```
.text, #text, p{  
    color:rgb(192, 173, 149)  
}
```

If you want to add a text shadow in that color use the text-shadow property, you can generate a text shadow directly with our [CSS Text Shadow Generator](#).

Here you see how black text with a 4 pixel rgb(192, 173, 149) colored shadow looks like.

```
.shadow{ text-shadow: 4px 4px 2px rgb(192, 173, 149) }
```

Border

The CSS property to change the border of an element to YIQ 175.9450, 19.0280, -3.4360 is called "border". The border property can be set on classes, ids or directly on the HTML element.

This example shows the color as border, it can be applied via the CSS property "border" or "border-color".

```
.border, #border, table{ border:4px solid rgb(192, 173, 149) }
```


If only the border color should be changed use the property `border-color`.

```
.border{ border-color:rgb(192, 173, 149) }
```

If you want to add a box shadow in that color use:

Here you see how a box with a 4 pixel `rgb(192, 173, 149)` colored shadow looks like.

```
.boxshadow{ -moz-box-shadow:4px 4px 4px  
4px rgb(192, 173, 149); -webkit-box-  
shadow:4px 4px 4px 4px rgb(192, 173, 149);  
box-shadow:4px 4px 4px 4px rgb(192, 173,  
149) }
```

Background

The CSS property to change the background color of an element to YIQ 175.9450, 19.0280, -3.4360 is called "background". The background property can be set on classes, ids or directly on the HTML element.

```
.background, #background, body{  
background: rgb(192, 173, 149) }
```

If only the background color should be changed can be used:

```
.background{ background-color: rgb(192,  
173, 149) }
```

This example shows the color as background, it is applied via the CSS property "background".

To optimize and compress your CSS code, you can use our [online CSS compressor and optimizer](#) based on csstidy. If you want to create a linear or radial gradient as background or border, check our [CSS Gradient Generator](#).

Hey! You found this booklet interesting? Support Converting Colors with the new Membership Option!

The pro membership hides all ads, plus gives you double the colors in the color bucket, and more awesome pro features!

[Learn more, Memberships starting at \\$2.50/m!](#)

**Follow me
on Twitter!**

@ConvertingColor