

Converting Colors

YIQ(176.2770, 24.0250, -0.3830)

Have a look what the booklet for
YIQ(176.2770, 24.0250, -0.3830)
contains.

YIQ(176.2770, 24.0250, -0.3830)	3
<i>Conversions</i>	4
<i>Details</i>	6
<i>Harmonies</i>	12
<i>Previews</i>	24
<i>Color Blindness Simulation</i>	28
<i>CSS Examples</i>	31

Color

**YIQ(176.2770, 24.0250,
-0.3830)**

Conversions

Conversions Part 1

Format	Color
Hex	C7AA95
RGB	199, 170, 149
RGB Percent	78%, 67%, 58%
CMY	0.2196, 0.3334, 0.4156
CMYK	0.00, 0.15, 0.25, 0.22
HSL	25°, 31%, 68%
HSV	25°, 25%, 78%
XYZ	43.3565, 43.0598, 34.4719
YIQ	176.2770, 24.0250, -0.3830

Conversions

Conversions Part 2

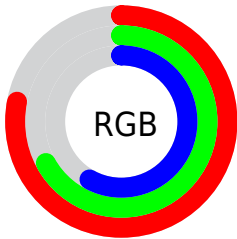
Format	Color
R _Y B	199, 185, 149
Decimal	13085333
CIE Lab	71.60, 7.33, 14.72
CIE LCh	72, 16.439, 63.528
Yxy	43.0598, 0.3586, 0.3562
Android (android.graphics.Color)	4291275413 (0xFFC7AA95)
YUV	176.2770, -13.4476, 19.9281
Hunter-Lab	65.6199, 3.1039, 14.7873

Details

The YIQ color $176.2770, 24.0250, -0.3830$ is a light color, and the websafe version is hex $CC9999$. A complement of this color would be $171.7230, -24.0250, 0.3830$, and the grayscale version is $176.0000, -0.0000, -0.0000$.

A 20% lighter version of the original color is $231.4620, 24.9420, -0.4820$, and $123.4940, 21.9160, -0.7080$ is the 20% darker color. If you saturate the color by 10%, you get $166.9530, 33.7450, -0.3270$, and if you desaturate by 10%, it is $185.6010, 14.3050, -0.4390$.

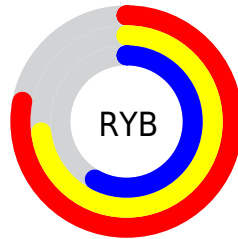
Distribution



Red (78%)

Green (67%)

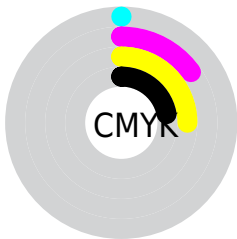
Blue (58%)



Red (78%)

Yellow (73%)

Blue (58%)

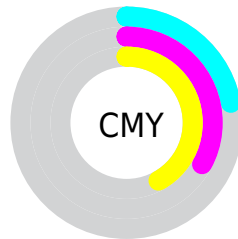


Cyan (0%)

Magenta (15%)

Yellow (25%)

Black (22%)



Cyan (22%)

Magenta (33%)

Yellow (42%)

Brightness & Saturation Gradients

These gradients show how the YIQ color 176.2770, 24.0250, -0.3830 changes by changing the brightness by 10 percent. The first figure shows a shift by +10% for each color and the second figure -10%.

Similar to the brightness gradients but the following saturation gradients show a change of the YIQ color 176.2770, 24.0250, -0.3830 by changing the saturation by 10% instead.

■ 176.2770, 24.0250,
-0.3830

■ 176.2770, 24.0250,
-0.3830

255.0000, -0.0000,
-0.0000

■ 149.6790, 22.8330,
-0.8070

■ 231.4620, 24.9420,
-0.4820

■ 123.4940, 21.9160,
-0.7080

■ 251.6770, 7.9790,
-6.9410

■ 98.3090, 20.9990,
-0.6090

■ 74.8250, 19.4860,
-0.7220

■ 51.6400, 18.5690,
-0.6230

■ 29.8140, 18.0190,
-1.6690

■ 6.8770, 13.7080,

4.8760

■ 0.0000, 0.0000,
0.0000

■ 176.2770, 24.0250,
-0.3830

■ 176.2770, 24.0250,
-0.3830

■ 166.9530, 33.7450,
-0.3270

■ 185.6010, 14.3050,
-0.4390

■ 158.2160, 43.1900,
-0.7940

■ 194.3380, 4.8600,
0.0280

■ 148.8920, 52.9100,
-0.7380

■ 203.6620, -4.8600,
-0.0280

■ 140.1550, 62.3550,
-1.2050

■ 212.3990,
-14.3050, 0.4390

■ 130.9450, 71.7540,
-0.8380

■ 221.7230,
-24.0250, 0.3830

■ 122.2080, 81.1990,
-1.3050

■ 228.8640,
-28.9760, -3.5040

■ 112.8840, 90.9190,
-1.2490

■ 235.9080,
-32.2760, -9.7800

■ 108.2220, 95.7790,
-1.2210

■ 238.2560,
-33.3760, -11.8720

Harmonies

Analogous

The Analogous color harmony consists of three colors that are next to each other on the color wheel.



177.1620, 26.0870, 6.3030



176.2770, 24.0250, -0.3830



174.9830, 15.8650, -6.6870

Triad

The Triadic color harmony groups three colors that are evenly spaced from another and form a triangle on the color wheel.



176.2770, 24.0250, -0.3830



170.0460, -23.9770, -11.5050



176.9970, -3.9450, 10.9270

Complementary

The Complementary color scheme is a pair of colors which are on the opposite of each other on the color wheel.



176.2770, 24.0250, -0.3830



171.7230, -24.0250, 0.3830

Split Complementary

Split-complementary colors differ from the complementary color scheme. The scheme consists of three colors, the original color and two neighbors of the complement color.



174.8210, -18.2490, 5.8390



176.2770, 24.0250, -0.3830



169.8590, -30.5800, -7.4760

Square

The Square scheme is like the rectangle color scheme, but the four colors are evenly spaced on the color wheel.



176.2770, 24.0250, -0.3830



171.3370, -11.7350, -13.1030



172.3310, -28.7930, -1.3130



178.4780, 10.8180, 13.2020

Rectangle

The Rectangle color scheme consists of four colors that form a rectangle on the color wheel.



176.2770, 24.0250, -0.3830



173.3840, 7.2460, -10.1780



172.3310, -28.7930, -1.3130



176.7190, -9.0340, 9.5420

Sweetspot

The Sweet Spot groups the original color and five complimentary colors.



176.2770, 24.0250, -0.3830



245.6760, 9.7200, 0.0560



167.2560, 20.4910, 19.6190



121.8220, 6.3730, 0.1410



0.0000, 0.0000, 0.0000



128.0000, -0.0000, -0.0000

Same Dimension

The Same Dimension uses a secret algorithm to generate beautiful new colors.



176.2770, 24.0250, -0.3830



220.5080, 36.4960, -0.6240



190.9520, 17.1500, -13.4580



95.0390, 4.2640, -0.1840



88.6530, 78.4480, -1.0080



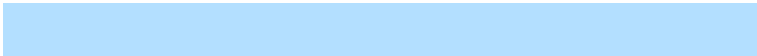
19.5690, 17.3310, -0.2130

Inverse Universe

The Inverse Universe completely reimagines the original color for something new.



171.7230, -24.0250, 0.3830



213.4920, -36.4960, 0.6240



157.0480, -17.1500, 13.4580



93.9610, -4.2640, 0.1840



74.3470, -78.4480, 1.0080



16.4310, -17.3310, 0.2130

Previews

White Background



This preview shows how the YIQ color 176.2770, 24.0250, -0.3830 looks on a white background.

Color Contrast Check

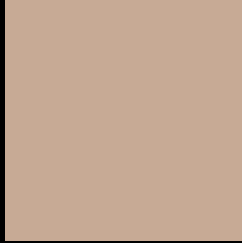
Large Text (above 18pt) WCAG AA × Fail

Any Text WCAG AA × Fail

Large Text (above 18pt) WCAG AAA × Fail

Any Text WCAG AAA × Fail

Black Background



This preview shows how the YIQ color 176.2770, 24.0250, -0.3830 looks on a black background.

Color Contrast Check

Large Text (above 18pt) WCAG AA ✓ Pass

Any Text WCAG AA ✓ Pass

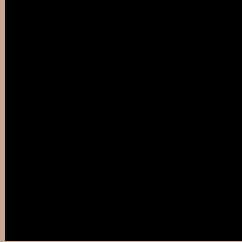
Large Text (above 18pt) WCAG AAA ✓ Pass

Any Text WCAG AAA ✓ Pass

If you want to check with other color combinations, try the [Color Contrast Checker](#).

YIQ 176.2770, 24.0250, -0.3830

Background



This preview shows how black text looks on a background with the YIQ color 176.2770, 24.0250, -0.3830.



This preview shows how white text looks on a background with the YIQ color 176.2770, 24.0250, -0.3830.

-0.3830.

Color Blindness Simulation

Color vision deficiency is a very complex topic, and I could not describe the different causes any better than Wikipedia does, so if you want to learn more, you should check out their [article about color blindness](#).

Dichromacy



Original Color

176.2770, 24.0250, -0.3830

Protanopia

175.0690, 12.7470, -5.2450

Deuteranopia

176.5870, 26.0880, 0.7760



Tritanopia

178.5450, 17.8790, 11.8870

Trichromacy



Original Color

176.2770, 24.0250, -0.3830

Protanomaly

175.2760, 16.5980, -3.4500

Deuteranomaly

176.2880, 25.4920, 0.5640

Tritanomaly

177.5790, 20.5390, 7.7310

Monochromacy



Original Color

176.2770, 24.0250, -0.3830

Achromatopsia

176.0000, -0.0000, -0.0000

Achromatomaly

176.0780, 8.5280, -0.3680

CSS Examples

Text

The CSS property to change the color of the text to YIQ 176.2770, 24.0250, -0.3830 is called "color". The color property can be set on classes, ids or directly on the HTML element.

This example shows how text in the color `rgb(199, 170, 149)` looks like.

```
.text, #text, p{  
    color:rgb(199, 170, 149)  
}
```

If you want to add a text shadow in that color use the text-shadow property, you can generate a text shadow directly with our [CSS Text Shadow Generator](#).

Here you see how black text with a 4 pixel rgb(199, 170, 149) colored shadow looks like.

```
.shadow{ text-shadow: 4px 4px 2px rgb(199, 170, 149) }
```

Border

The CSS property to change the border of an element to YIQ 176.2770, 24.0250, -0.3830 is called "border". The border property can be set on classes, ids or directly on the HTML element.

This example shows the color as border, it can be applied via the CSS property "border" or "border-color".

```
.border, #border, table{ border:4px solid rgb(199, 170, 149) }
```


If only the border color should be changed use the property `border-color`.

```
.border{ border-color:rgb(199, 170, 149) }
```

If you want to add a box shadow in that color use:

Here you see how a box with a 4 pixel `rgb(199, 170, 149)` colored shadow looks like.

```
.boxshadow{ -moz-box-shadow:4px 4px 4px  
4px rgb(199, 170, 149); -webkit-box-  
shadow:4px 4px 4px 4px rgb(199, 170, 149);  
box-shadow:4px 4px 4px 4px rgb(199, 170,  
149) }
```

Background

The CSS property to change the background color of an element to YIQ 176.2770, 24.0250, -0.3830 is called "background". The background property can be set on classes, ids or directly on the HTML element.

```
.background, #background, body{  
background: rgb(199, 170, 149) }
```

If only the background color should be changed can be used:

```
.background{ background-color: rgb(199,  
170, 149) }
```

This example shows the color as background, it is applied via the CSS property "background".

To optimize and compress your CSS code, you can use our [online CSS compressor and optimizer](#) based on csstidy. If you want to create a linear or radial gradient as background or border, check our [CSS Gradient Generator](#).

Hey! You found this booklet interesting? Support Converting Colors with the new Membership Option!

The pro membership hides all ads, plus gives you double the colors in the color bucket, and more awesome pro features!

[Learn more, Memberships starting at \\$2.50/m!](#)

**Follow me
on Twitter!**

@ConvertingColor