

Converting Colors

YIQ(176.2770, 33.1930, 9.6810)

Have a look what the booklet for
YIQ(176.2770, 33.1930, 9.6810)
contains.

YIQ(176.2770, 33.1930, 9.6810)	3
<i>Conversions</i>	4
<i>Details</i>	6
<i>Harmonies</i>	12
<i>Previews</i>	24
<i>Color Blindness Simulation</i>	28
<i>CSS Examples</i>	31

Color

**YIQ(176.2770, 33.1930,
9.6810)**

Conversions

Conversions Part 1

Format	Color
Hex	D6A19C
RGB	214, 161, 156
RGB Percent	84%, 63%, 61%
CMY	0.1607, 0.3687, 0.3881
CMYK	0.00, 0.25, 0.27, 0.16
HSL	5°, 41%, 73%
HSV	5°, 27%, 84%
XYZ	46.4854, 42.1843, 37.1602
YIQ	176.2770, 33.1930, 9.6810

Conversions

Conversions Part 2

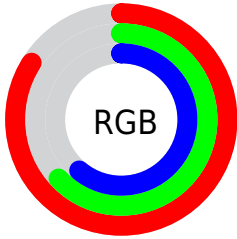
Format	Color
R_{YB}	214, 161, 156
Decimal	14066076
CIE Lab	71.00, 18.95, 10.23
CIE LCh	71, 21.534, 28.363
Yxy	42.1843, 0.3694, 0.3352
Android (android.graphics.Color)	4292256156 (0xFFD6A19C)
YUV	176.2770, -9.9966, 33.0831
Hunter-Lab	64.9494, 14.0939, 11.5424

Details

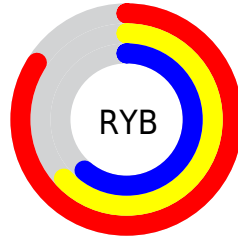
The YIQ color **176.2770, 33.1930, 9.6810** is a light color, and the websafe version is hex **CC9999**. A complement of this color would be **193.7230, -33.1930, -9.6810**, and the grayscale version is **176.0000, -0.0000, -0.0000**.

A 20% lighter version of the original color is **226.9770, 25.1700, 6.4020**, and **123.1950, 30.4880, 9.1440** is the 20% darker color. If you saturate the color by 10%, you get **162.1430, 45.4340, 13.6100**, and if you desaturate by 10%, it is **190.4110, 20.9520, 5.7520**.

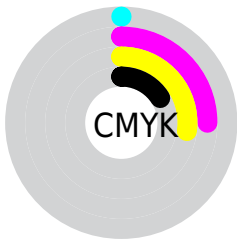
Distribution



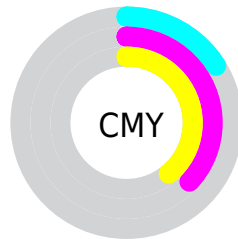
- Red (84%)
- Green (63%)
- Blue (61%)



- Red (84%)
- Yellow (63%)
- Blue (61%)



- Cyan (0%)
- Magenta (25%)
- Yellow (27%)
- Black (16%)





- Cyan (16%)
- Magenta (37%)
- Yellow (39%)

Brightness & Saturation Gradients


These gradients show how the YIQ color 176.2770, 33.1930, 9.6810 changes by changing the brightness by 10 percent. The first figure shows a shift by +10% for each color and the second figure -10%.

Similar to the brightness gradients but the following saturation gradients show a change of the YIQ color 176.2770, 33.1930, 9.6810 by changing the saturation by 10% instead.


 176.2770, 33.1930,
9.6810

 176.2770, 33.1930,
9.6810


255.0000, -0.0000,
-0.0000


 149.6790, 32.0010,
9.2570


 226.9770, 25.1700,
6.4020


 123.1950, 30.4880,
9.1440

 246.7190, 8.1610,
0.7770

 98.2980, 28.7000,
8.5080

 73.8140, 27.1870,
8.3950

 50.9170, 25.3990,
7.7590

 28.1340, 23.2900,
7.4340

 10.4650, 20.8600,

7.4200

■ 0.0000, 0.0000,
0.0000

■ 176.2770, 33.1930,
9.6810

■ 176.2770, 33.1930,
9.6810

■ 162.1430, 45.4340,
13.6100

■ 190.4110, 20.9520,
5.7520

■ 148.4820, 57.7210,
16.7050

■ 204.0720, 8.6650,
2.6570

■ 134.3480, 69.9620,
20.6340

■ 218.2060, -3.5760,
-1.2720

■ 120.6870, 82.2490,
23.7290

■ 231.8670,
-15.8630, -4.3670

■ 106.5530, 94.4900,
27.6580

■ 242.7410,
-24.4360, -8.6920

■ 93.0060, 106.4560,
31.0640

■ 78.7580, 119.0180,
34.6820

■ 74.5520, 122.5940,
35.9540

Harmonies

Analogous

The Analogous color harmony consists of three colors that are next to each other on the color wheel.



177.3720, 25.8560, 16.0000



176.2770, 33.1930, 9.6810



175.1100, 31.8650, 0.7050

Triad

The Triadic color harmony groups three colors that are evenly spaced from another and form a triangle on the color wheel.



176.2770, 33.1930, 9.6810



168.5170, -12.4220, -17.1740



172.1450, -27.9690, 5.7830

Complementary

The Complementary color scheme is a pair of colors which are on the opposite of each other on the color wheel.



176.2770, 33.1930, 9.6810



193.7230, -33.1930, -9.6810

Split Complementary

Split-complementary colors differ from the complementary color scheme. The scheme consists of three colors, the original color and two neighbors of the complement color.



167.7040, -40.2090, -3.6730



176.2770, 33.1930, 9.6810



166.1760, -30.3950, -16.3390

Square

The Square scheme is like the rectangle color scheme, but the four colors are evenly spaced on the color wheel.



176.2770, 33.1930, 9.6810



170.8630, 7.1550, -14.0370



165.4770, -41.3080, -11.2920



175.5390, -8.3470, 13.6130

Rectangle

The Rectangle color scheme consists of four colors that form a rectangle on the color wheel.



176.2770, 33.1930, 9.6810



173.8980, 26.4100, -5.0620



165.4770, -41.3080, -11.2920



170.8130, -32.9660, 2.7300

Sweetspot

The Sweet Spot groups the original color and five complimentary colors.



176.2770, 33.1930, 9.6810



241.5670, 11.6450, 3.7170



179.3840, 17.5550, 28.7790



119.4740, 7.4730, 2.2330



0.0000, 0.0000, 0.0000



128.0000, -0.0000, -0.0000

Same Dimension

The Same Dimension uses a secret algorithm to generate beautiful new colors.



176.2770, 33.1930, 9.6810



200.2250, 48.1390, 14.1470



193.3000, 25.2180, -5.4860



99.8760, 6.2810, 1.8090



59.9340, 97.7910, 28.4070



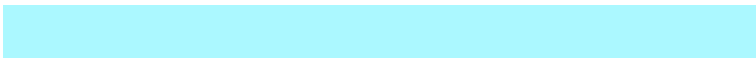
15.2050, 24.5280, 7.0240

Inverse Universe

The Inverse Universe completely reimagines the original color for something new.



193.7230, -33.1930, -9.6810



225.7750, -48.1390, -14.1470



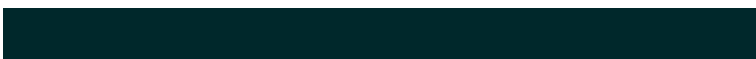
176.7000, -25.2180, 5.4860



103.1240, -6.2810, -1.8090



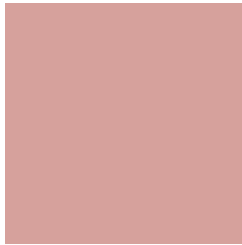
111.0660, -97.7910, -28.4070



28.3820, -24.8030, -7.5470

Previews

White Background



This preview shows how the YIQ color 176.2770, 33.1930, 9.6810 looks on a white background.

Color Contrast Check

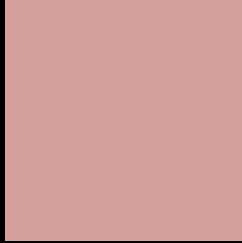
Large Text (above 18pt) WCAG AA × Fail

Any Text WCAG AA × Fail

Large Text (above 18pt) WCAG AAA × Fail

Any Text WCAG AAA × Fail

Black Background



This preview shows how the YIQ color 176.2770, 33.1930, 9.6810 looks on a black background.

Color Contrast Check

Large Text (above 18pt) WCAG AA ✓ Pass

Any Text WCAG AA ✓ Pass

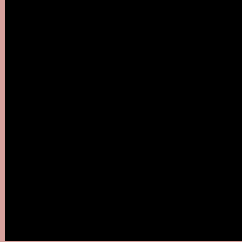
Large Text (above 18pt) WCAG AAA ✓ Pass

Any Text WCAG AAA ✓ Pass

If you want to check with other color combinations, try the [Color Contrast Checker](#).

YIQ 176.2770, 33.1930, 9.6810

Background



This preview shows how black text looks on a background with the YIQ color 176.2770, 33.1930, 9.6810.



This preview shows how white text looks on a background with the YIQ color 176.2770, 33.1930,

9.6810.

Color Blindness Simulation

Color vision deficiency is a very complex topic, and I could not describe the different causes any better than Wikipedia does, so if you want to learn more, you should check out their [article about color blindness](#).

Dichromacy



Original Color

176.2770, 33.1930, 9.6810

Protanopia

173.9530, 7.3820, -1.6260

Deuteranopia

175.4880, 22.0530, 2.3170



Tritanopia

177.4110, 30.1200, 15.8160

Trichromacy



Original Color

176.2770, 33.1930, 9.6810

Protanomaly

174.8510, 16.5970, 2.0770

Deuteranomaly

175.5210, 26.4540, 5.1580

Tritanomaly

177.1290, 30.8540, 13.5260

Monochromacy



Original Color

176.2770, 33.1930, 9.6810

Achromatopsia

176.0000, -0.0000, -0.0000

Achromatomaly

176.4530, 11.9660, 3.4060

CSS Examples

Text

The CSS property to change the color of the text to YIQ 176.2770, 33.1930, 9.6810 is called "color". The color property can be set on classes, ids or directly on the HTML element.

This example shows how text in the color `rgb(214, 161, 156)` looks like.

```
.text, #text, p{  
    color:rgb(214, 161, 156)  
}
```

If you want to add a text shadow in that color use the text-shadow property, you can generate a text shadow directly with our [CSS Text Shadow Generator](#).

Here you see how black text with a 4 pixel rgb(214, 161, 156) colored shadow looks like.

```
.shadow{ text-shadow: 4px 4px 2px rgb(214, 161, 156) }
```

Border

The CSS property to change the border of an element to YIQ 176.2770, 33.1930, 9.6810 is called "border". The border property can be set on classes, ids or directly on the HTML element.

This example shows the color as border, it can be applied via the CSS property "border" or "border-color".

```
.border, #border, table{ border:4px solid rgb(214, 161, 156) }
```


If only the border color should be changed use the property `border-color`.

```
.border{ border-color:rgb(214, 161, 156) }
```

If you want to add a box shadow in that color use:

Here you see how a box with a 4 pixel `rgb(214, 161, 156)` colored shadow looks like.

```
.boxshadow{ -moz-box-shadow:4px 4px 4px  
4px rgb(214, 161, 156); -webkit-box-  
shadow:4px 4px 4px 4px rgb(214, 161, 156);  
box-shadow:4px 4px 4px 4px rgb(214, 161,  
156) }
```

Background

The CSS property to change the background color of an element to YIQ 176.2770, 33.1930, 9.6810 is called "background". The background property can be set on classes, ids or directly on the HTML element.

```
.background, #background, body{  
background: rgb(214, 161, 156) }
```

If only the background color should be changed can be used:

```
.background{ background-color: rgb(214,  
161, 156) }
```

This example shows the color as background, it is applied via the CSS property "background".

To optimize and compress your CSS code, you can use our [online CSS compressor and optimizer](#) based on csstidy. If you want to create a linear or radial gradient as background or border, check our [CSS Gradient Generator](#).

Hey! You found this booklet interesting? Support Converting Colors with the new Membership Option!

The pro membership hides all ads, plus gives you double the colors in the color bucket, and more awesome pro features!

[Learn more, Memberships starting at \\$2.50/m!](#)

**Follow me
on Twitter!**

@ConvertingColor