

Converting Colors

YIQ(176.3200, 31.6340, 10.4020)

Have a look what the booklet for
YIQ(176.3200, 31.6340, 10.4020)
contains.

YIQ(176.3200, 31.6340, 10.4020)	3
<i>Conversions</i>	4
<i>Details</i>	6
<i>Harmonies</i>	12
<i>Previews</i>	24
<i>Color Blindness Simulation</i>	28
<i>CSS Examples</i>	31

Color

**YIQ(176.3200, 31.6340,
10.4020)**

Conversions

Conversions Part 1

Format	Color
Hex	D5A19F
RGB	213, 161, 159
RGB Percent	84%, 63%, 62%
CMY	0.1646, 0.3687, 0.3763
CMYK	0.00, 0.24, 0.25, 0.16
HSL	2°, 39%, 73%
HSV	2°, 25%, 84%
XYZ	46.4515, 42.1372, 38.5007
YIQ	176.3200, 31.6340, 10.4020

Conversions

Conversions Part 2

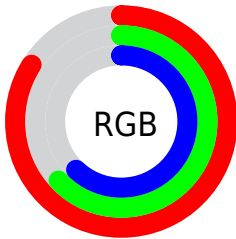
Format	Color
R _Y B	213, 161, 159
Decimal	14000543
CIE Lab	70.97, 18.99, 8.51
CIE LCh	71, 20.813, 24.144
Yxy	42.1372, 0.3655, 0.3316
Android (android.graphics.Color)	4292190623 (0xFFD5A19F)
YUV	176.3200, -8.5388, 32.1684
Hunter-Lab	64.9132, 14.1355, 10.2737

Details

The YIQ color **176.3200, 31.6340, 10.4020** is a light color, and the websafe version is hex **CC9999**. A complement of this color would be **195.6800, -31.6340, -10.4020**, and the grayscale version is **176.0000, -0.0000, -0.0000**.

A 20% lighter version of the original color is **227.4330, 23.8860, 7.6460**, and **123.2380, 28.9290, 9.8650** is the 20% darker color. If you saturate the color by 10%, you get **161.5990, 44.1500, 14.8540**, and if you desaturate by 10%, it is **191.0410, 19.1180, 5.9500**.

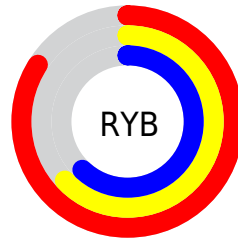
Distribution



Red (84%)

Green (63%)

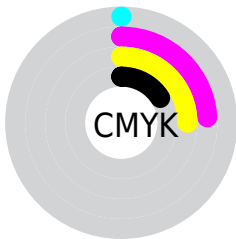
Blue (62%)



Red (84%)

Yellow (63%)

Blue (62%)

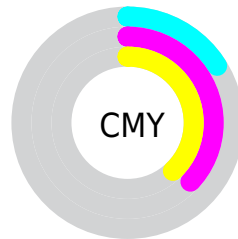


Cyan (0%)

Magenta (24%)

Yellow (25%)

Black (16%)



Cyan (16%)

Magenta (37%)

Yellow (38%)

Brightness & Saturation Gradients

These gradients show how the YIQ color 176.3200, 31.6340, 10.4020 changes by changing the brightness by 10 percent. The first figure shows a shift by +10% for each color and the second figure -10%.

Similar to the brightness gradients but the following saturation gradients show a change of the YIQ color 176.3200, 31.6340, 10.4020 by changing the saturation by 10% instead.

■ 176.3200, 31.6340,
10.4020

■ 176.3200, 31.6340,
10.4020

255.0000, -0.0000,
-0.0000

■ 149.7220, 30.4420,
9.9780

■ 227.4330, 23.8860,
7.6460

■ 123.2380, 28.9290,
9.8650

■ 247.0610, 7.1980,
1.7100

■ 98.5260, 28.0580,
9.1300

■ 73.7430, 25.9490,
8.8050

■ 50.9600, 23.8400,
8.4800

■ 28.4760, 22.3270,
8.3670

■ 10.4650, 20.8600,

7.4200

0.0000, 0.0000,
0.0000

176.3200, 31.6340,
10.4020

176.3200, 31.6340,
10.4020

161.5990, 44.1500,
14.8540

191.0410, 19.1180,
5.9500

147.3510, 56.7120,
18.4720

205.2890, 6.5560,
2.3320

132.6300, 69.2280,
22.9240

220.0100, -5.9600,
-2.1200

118.4960, 81.4690,
26.8530

234.1440,
-18.2010, -6.0490

103.7750, 93.9850,
31.3050

242.4420,
-25.0320, -8.9040

■ 89.5270, 106.5470,
34.9230

■ 74.8060, 119.0630,
39.3750

■ 68.3830, 124.7480,
40.9720

Harmonies

Analogous

The Analogous color harmony consists of three colors that are next to each other on the color wheel.



177.2900, 23.1510, 15.4630



176.3200, 31.6340, 10.4020



175.1640, 31.7730, 2.3730

Triad

The Triadic color harmony groups three colors that are evenly spaced from another and form a triangle on the color wheel.



176.3200, 31.6340, 10.4020



168.8980, -9.1210, -16.4250



171.9060, -28.7940, 4.2140

Complementary

The Complementary color scheme is a pair of colors which are on the opposite of each other on the color wheel.



176.3200, 31.6340, 10.4020



195.6800, -31.6340, -10.4020

Split Complementary

Split-complementary colors differ from the complementary color scheme. The scheme consists of three colors, the original color and two neighbors of the complement color.



168.0630, -39.8420, -4.8180



176.3200, 31.6340, 10.4020



166.4430, -26.7730, -15.9010

Square

The Square scheme is like the rectangle color scheme, but the four colors are evenly spaced on the color wheel.



176.3200, 31.6340, 10.4020



171.1730, 9.2180, -12.8780



165.6190, -38.8320, -12.1120



174.9300, -11.0060, 12.2420

Rectangle

The Rectangle color scheme consists of four colors that form a rectangle on the color wheel.



176.3200, 31.6340, 10.4020



173.8380, 26.6390, -3.7050



165.6190, -38.8320, -12.1120



169.9870, -33.5160, 1.6840

Sweetspot

The Sweet Spot groups the original color and five complimentary colors.



176.3200, 31.6340, 10.4020



240.9800, 11.9200, 4.2400



181.0740, 15.4920, 27.6200



118.8870, 7.7480, 2.7560



0.0000, 0.0000, 0.0000



128.0000, -0.0000, -0.0000

Same Dimension

The Same Dimension uses a secret algorithm to generate beautiful new colors.



176.3200, 31.6340, 10.4020



202.8980, 44.7460, 15.0660



192.1690, 24.2090, -3.7190



99.8760, 6.2810, 1.8090



54.6510, 100.2660, 33.1140



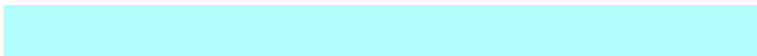
14.0310, 25.0780, 8.0700

Inverse Universe

The Inverse Universe completely reimagines the original color for something new.



195.6800, -31.6340, -10.4020



230.5150, -44.4710, -14.5430



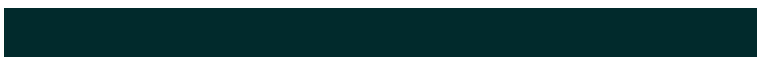
179.8310, -24.2090, 3.7190



103.7110, -6.5560, -2.3320



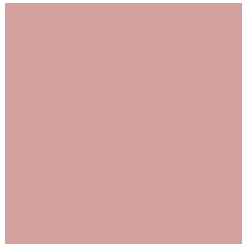
116.3490, -100.2660, -33.1140



29.5560, -25.3530, -8.5930

Previews

White Background



This preview shows how the YIQ color 176.3200, 31.6340, 10.4020 looks on a white background.

Color Contrast Check

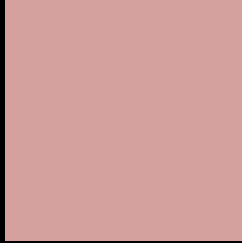
Large Text (above 18pt) WCAG AA × Fail

Any Text WCAG AA × Fail

Large Text (above 18pt) WCAG AAA × Fail

Any Text WCAG AAA × Fail

Black Background



This preview shows how the YIQ color 176.3200, 31.6340, 10.4020 looks on a black background.

Color Contrast Check

Large Text (above 18pt) WCAG AA ✓ Pass

Any Text WCAG AA ✓ Pass

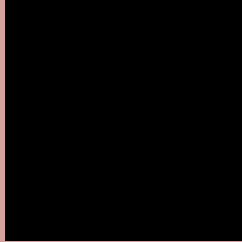
Large Text (above 18pt) WCAG AAA ✓ Pass

Any Text WCAG AAA ✓ Pass

If you want to check with other color combinations, try the [Color Contrast Checker](#).

YIQ 176.3200, 31.6340, 10.4020

Background



This preview shows how black text looks on a background with the YIQ color 176.3200, 31.6340, 10.4020.



This preview shows how white text looks on a background with the YIQ color 176.3200, 31.6340,

Color Blindness Simulation

Color vision deficiency is a very complex topic, and I could not describe the different causes any better than Wikipedia does, so if you want to learn more, you should check out their [article about color blindness](#).

Dichromacy



Original Color

176.3200, 31.6340, 10.4020

Protanopia

173.9960, 5.8230, -0.9050

Deuteranopia

175.5310, 20.4940, 3.0380



Tritanopia

176.8130, 28.9280, 15.3920

Trichromacy



Original Color

176.3200, 31.6340, 10.4020

Protanomaly

174.8940, 15.0380, 2.7980

Deuteranomaly

175.5640, 24.8950, 5.8790

Tritanomaly

176.9440, 29.9370, 13.6250

Monochromacy



Original Color

176.3200, 31.6340, 10.4020

Achromatopsia

176.0000, -0.0000, -0.0000

Achromatomaly

176.2680, 11.0490, 3.5050

CSS Examples

Text

The CSS property to change the color of the text to YIQ 176.3200, 31.6340, 10.4020 is called "color". The color property can be set on classes, ids or directly on the HTML element.

This example shows how text in the color `rgb(213, 161, 159)` looks like.

```
.text, #text, p{  
    color:rgb(213, 161, 159)  
}
```

If you want to add a text shadow in that color use the text-shadow property, you can generate a text shadow directly with our [CSS Text Shadow Generator](#).

Here you see how black text with a 4 pixel rgb(213, 161, 159) colored shadow looks like.

```
.shadow{ text-shadow: 4px 4px 2px rgb(213, 161, 159) }
```

Border

The CSS property to change the border of an element to YIQ 176.3200, 31.6340, 10.4020 is called "border". The border property can be set on classes, ids or directly on the HTML element.

This example shows the color as border, it can be applied via the CSS property "border" or "border-color".

```
.border, #border, table{ border:4px solid rgb(213, 161, 159) }
```


If only the border color should be changed use the property `border-color`.

```
.border{ border-color:rgb(213, 161, 159) }
```

If you want to add a box shadow in that color use:

Here you see how a box with a 4 pixel `rgb(213, 161, 159)` colored shadow looks like.

```
.boxshadow{ -moz-box-shadow:4px 4px 4px  
4px rgb(213, 161, 159); -webkit-box-  
shadow:4px 4px 4px 4px rgb(213, 161, 159);  
box-shadow:4px 4px 4px 4px rgb(213, 161,  
159) }
```

Background

The CSS property to change the background color of an element to YIQ 176.3200, 31.6340, 10.4020 is called "background". The background property can be set on classes, ids or directly on the HTML element.

```
.background, #background, body{  
background: rgb(213, 161, 159) }
```

If only the background color should be changed can be used:

```
.background{ background-color: rgb(213,  
161, 159) }
```

This example shows the color as background, it is applied via the CSS property "background".

To optimize and compress your CSS code, you can use our [online CSS compressor and optimizer](#) based on csstidy. If you want to create a linear or radial gradient as background or border, check our [CSS Gradient Generator](#).

Hey! You found this booklet interesting? Support Converting Colors with the new Membership Option!

The pro membership hides all ads, plus gives you double the colors in the color bucket, and more awesome pro features!

[Learn more, Memberships starting at \\$2.50/m!](#)

**Follow me
on Twitter!**

@ConvertingColor