

Converting Colors

YIQ(176.8880, 15.1750, 5.8230)

Have a look what the booklet for
YIQ(176.8880, 15.1750, 5.8230)
contains.

YIQ(176.8880, 15.1750, 5.8230)	3
<i>Conversions</i>	4
<i>Details</i>	6
<i>Harmonies</i>	12
<i>Previews</i>	24
<i>Color Blindness Simulation</i>	28
<i>CSS Examples</i>	31

Color

**YIQ(176.8880, 15.1750,
5.8230)**

Conversions

Conversions Part 1

Format	Color
Hex	C3A9AA
RGB	195, 169, 170
RGB Percent	76%, 66%, 67%
CMY	0.2352, 0.3373, 0.3333
CMYK	0.00, 0.13, 0.13, 0.24
HSL	358°, 18%, 71%
HSV	358°, 13%, 76%
XYZ	43.9529, 42.8789, 43.9976
YIQ	176.8880, 15.1750, 5.8230

Conversions

Conversions Part 2

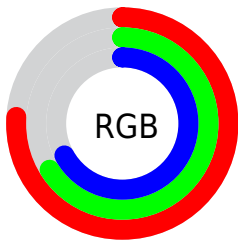
Format	Color
RYB	195, 169, 170
Decimal	12822954
CIELab	71.47, 9.61, 2.95
CIELCh	71, 10.057, 17.082
Yxy	42.8789, 0.3360, 0.3277
Android (android.graphics.Color)	4291013034 (0xFFC3A9AA)
YUV	176.8880, -3.3958, 15.8842
Hunter-Lab	65.4820, 5.2193, 6.0002

Details

The YIQ color **176.8880, 15.1750, 5.8230** is a light color, and the websafe version is hex **CC9999**. A complement of this color would be **187.1120, -15.1750, -5.8230**, and the grayscale version is **177.0000, -0.0000, 0.0000**.

A 20% lighter version of the original color is **232.4860, 16.3670, 6.2470**, and **124.2900, 13.9830, 5.3990** is the 20% darker color. If you saturate the color by 10%, you get **162.9820, 26.7740, 10.3740**, and if you desaturate by 10%, it is **190.2070, 3.8510, 1.7950**.

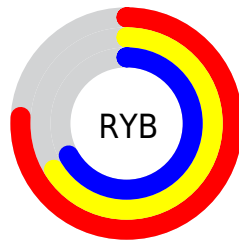
Distribution



Red (76%)

Green (66%)

Blue (67%)



Red (76%)

Yellow (66%)

Blue (67%)

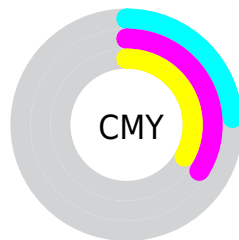


Cyan (0%)

Magenta (13%)

Yellow (13%)

Black (24%)



Cyan (24%)

Magenta (34%)

Yellow (33%)

Brightness & Saturation Gradients

These gradients show how the YIQ color 176.8880, 15.1750, 5.8230 changes by changing the brightness by 10 percent. The first figure shows a shift by +10% for each color and the second figure -10%.

Similar to the brightness gradients but the following saturation gradients show a change of the YIQ color 176.8880, 15.1750, 5.8230 by changing the saturation by 10% instead.

■ 176.8880, 15.1750,
5.8230

■ 176.8880, 15.1750,
5.8230

255.0000, -0.0000,
-0.0000

■ 150.5890, 14.5790,
5.6110

■ 232.4860, 16.3670,
6.2470

■ 124.2900, 13.9830,
5.3990

■ 253.7120, 0.8710,
0.7350

■ 98.9910, 13.3870,
5.1870

■ 75.6920, 12.7910,
4.9750

■ 52.3930, 12.1950,
4.7630

■ 30.9090, 10.6820,
4.6500

■ 7.7740, 15.4960,

5.5120

■ 0.0000, 0.0000,
0.0000

■ 176.8880, 15.1750,
5.8230

■ 176.8880, 15.1750,
5.8230

■ 162.9820, 26.7740,
10.3740

■ 190.2070, 3.8510,
1.7950

■ 149.7770, 37.7770,
14.7130

■ 203.9990, -7.4270,
-3.0670

■ 135.8710, 49.3760,
19.2640

■ 217.3180,
-18.7510, -7.0950

■ 122.5520, 60.7000,
23.2920

■ 231.2240,
-30.3500, -11.6460

■ 108.6460, 72.2990,
27.8430

■ 237.0600,
-35.7600, -12.7200

■ 95.4410, 83.3020,
32.1820

■ 81.5350, 94.9010,
36.7330

■ 68.2160, 106.2250,
40.7610

■ 59.2170, 113.6520,
43.8280

Harmonies

Analogous

The Analogous color harmony consists of three colors that are next to each other on the color wheel.



176.7180, 9.9020, 7.7740



176.8880, 15.1750, 5.8230



175.9650, 16.2760, 2.3880

Triad

The Triadic color harmony groups three colors that are evenly spaced from another and form a triangle on the color wheel.



176.8880, 15.1750, 5.8230



173.1750, -2.2910, -8.0430



174.0400, -14.6720, 1.5840

Complementary

The Complementary color scheme is a pair of colors which are on the opposite of each other on the color wheel.



176.8880, 15.1750, 5.8230



187.1120, -15.1750, -5.8230

Split Complementary

Split-complementary colors differ from the complementary color scheme. The scheme consists of three colors, the original color and two neighbors of the complement color.



172.5510, -17.7890, -2.5010



176.8880, 15.1750, 5.8230



172.0970, -10.8190, -7.6750

Square

The Square scheme is like the rectangle color scheme, but the four colors are evenly spaced on the color wheel.



176.8880, 15.1750, 5.8230



174.2470, 6.3740, -5.3860



172.5140, -16.3670, -6.2470



175.4540, -6.9700, 5.1740

Rectangle

The Rectangle color scheme consists of four colors that form a rectangle on the color wheel.



176.8880, 15.1750, 5.8230



175.4870, 14.6260, -0.7500



172.5140, -16.3670, -6.2470



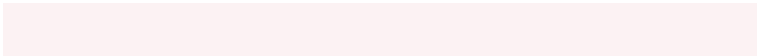
173.6160, -16.4140, 0.1140

Sweetspot

The Sweet Spot groups the original color and five complimentary colors.



176.8880, 15.1750, 5.8230



245.1040, 5.6390, 2.4310



179.4390, 6.5540, 13.3860



123.0930, 4.1720, 1.4840



0.0000, 0.0000, 0.0000



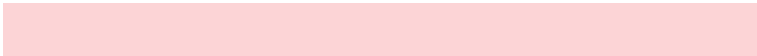
128.0000, -0.0000, -0.0000

Same Dimension

The Same Dimension uses a secret algorithm to generate beautiful new colors.



176.8880, 15.1750, 5.8230



224.1880, 23.1980, 9.1020



183.8180, 12.1960, -0.7640



90.1040, 5.6390, 2.4310



48.8230, 94.0300, 35.9980



9.9810, 19.3470, 7.3070

Inverse Universe

The Inverse Universe completely reimagines the original color for something new.



176.8880, 15.1750, 5.8230



224.1880, 23.1980, 9.1020



180.1820, -12.1960, 0.7640



90.1040, 5.6390, 2.4310



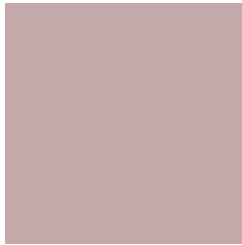
48.8230, 94.0300, 35.9980



9.9810, 19.3470, 7.3070

Previews

White Background



This preview shows how the YIQ color 176.8880, 15.1750, 5.8230 looks on a white background.

Color Contrast Check

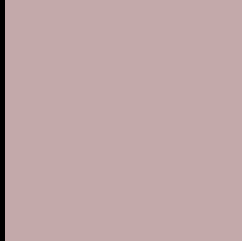
Large Text (above 18pt) WCAG AA × Fail

Any Text WCAG AA × Fail

Large Text (above 18pt) WCAG AAA × Fail

Any Text WCAG AAA × Fail

Black Background



This preview shows how the YIQ color 176.8880, 15.1750, 5.8230 looks on a black background.

Color Contrast Check

Large Text (above 18pt) WCAG AA ✓ Pass

Any Text WCAG AA ✓ Pass

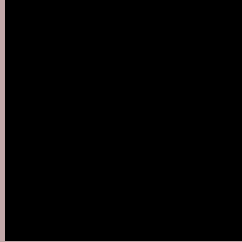
Large Text (above 18pt) WCAG AAA ✓ Pass

Any Text WCAG AAA ✓ Pass

If you want to check with other color combinations, try the [Color Contrast Checker](#).

YIQ 176.8880, 15.1750, 5.8230

Background



This preview shows how black text looks on a background with the YIQ color 176.8880, 15.1750, 5.8230.



This preview shows how white text looks on a background with the YIQ color 176.8880, 15.1750,

5.8230.

Color Blindness Simulation

Color vision deficiency is a very complex topic, and I could not describe the different causes any better than Wikipedia does, so if you want to learn more, you should check out their [article about color blindness](#).

Dichromacy



Original Color

176.8880, 15.1750, 5.8230

Protanopia

175.3810, 3.3010, 0.7490

Deuteranopia

176.5890, 14.5790, 5.6110



Tritanopia

177.1530, 13.1110, 10.1910

Trichromacy



Original Color

176.8880, 15.1750, 5.8230

Protanomaly

175.8870, 7.7480, 2.7560

Deuteranomaly

176.5890, 14.5790, 5.6110

Tritanomaly

177.2840, 14.1200, 8.4240

Monochromacy



Original Color

176.8880, 15.1750, 5.8230

Achromatopsia

177.0000, -0.0000, 0.0000

Achromatomaly

176.9900, 5.9600, 2.1200

CSS Examples

Text

The CSS property to change the color of the text to YIQ 176.8880, 15.1750, 5.8230 is called "color". The color property can be set on classes, ids or directly on the HTML element.

This example shows how text in the color `rgb(195, 169, 170)` looks like.

```
.text, #text, p{  
    color:rgb(195, 169, 170)  
}
```

If you want to add a text shadow in that color use the text-shadow property, you can generate a text shadow directly with our [CSS Text Shadow Generator](#).

Here you see how black text with a 4 pixel rgb(195, 169, 170) colored shadow looks like.

```
.shadow{ text-shadow: 4px 4px 2px rgb(195, 169, 170) }
```

Border

The CSS property to change the border of an element to YIQ 176.8880, 15.1750, 5.8230 is called "border". The border property can be set on classes, ids or directly on the HTML element.

This example shows the color as border, it can be applied via the CSS property "border" or "border-color".

```
.border, #border, table{ border:4px solid rgb(195, 169, 170) }
```


If only the border color should be changed use the property `border-color`.

```
.border{ border-color:rgb(195, 169, 170) }
```

If you want to add a box shadow in that color use:

Here you see how a box with a 4 pixel `rgb(195, 169, 170)` colored shadow looks like.

```
.boxshadow{ -moz-box-shadow:4px 4px 4px  
4px rgb(195, 169, 170); -webkit-box-  
shadow:4px 4px 4px 4px rgb(195, 169, 170);  
box-shadow:4px 4px 4px 4px rgb(195, 169,  
170) }
```

Background

The CSS property to change the background color of an element to YIQ 176.8880, 15.1750, 5.8230 is called "background". The background property can be set on classes, ids or directly on the HTML element.

```
.background, #background, body{  
background: rgb(195, 169, 170) }
```

If only the background color should be changed can be used:

```
.background{ background-color: rgb(195,  
169, 170) }
```

This example shows the color as background, it is applied via the CSS property "background".

To optimize and compress your CSS code, you can use our [online CSS compressor and optimizer](#) based on csstidy. If you want to create a linear or radial gradient as background or border, check our [CSS Gradient Generator](#).

Hey! You found this booklet interesting? Support Converting Colors with the new Membership Option!

The pro membership hides all ads, plus gives you double the colors in the color bucket, and more awesome pro features!

[Learn more, Memberships starting at \\$2.50/m!](#)

**Follow me
on Twitter!**

@ConvertingColor