

Converting Colors

YIQ(177.0940, 11.5990, 4.5510)

Have a look what the booklet for
YIQ(177.0940, 11.5990, 4.5510)
contains.

YIQ(177.0940, 11.5990, 4.5510)	3
<i>Conversions</i>	4
<i>Details</i>	6
<i>Harmonies</i>	12
<i>Previews</i>	24
<i>Color Blindness Simulation</i>	28
<i>CSS Examples</i>	31

Color

**YIQ(177.0940, 11.5990,
4.5510)**

Conversions

Conversions Part 1

Format	Color
Hex	BFABAC
RGB	191, 171, 172
RGB Percent	75%, 67%, 67%
CMY	0.2509, 0.3294, 0.3254
CMYK	0.00, 0.10, 0.10, 0.25
HSL	357°, 14%, 71%
HSV	357°, 10%, 75%
XYZ	43.4978, 43.1796, 45.0775
YIQ	177.0940, 11.5990, 4.5510

Conversions

Conversions Part 2

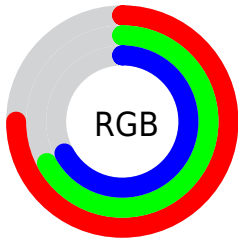
Format	Color
R_{YB}	191, 171, 172
Decimal	12561324
CIE Lab	71.68, 7.40, 2.11
CIE LCh	72, 7.690, 15.896
Yxy	43.1796, 0.3301, 0.3277
Android (android.graphics.Color)	4290751404 (0xFFBFABAC)
YUV	177.0940, -2.5113, 12.1956
Hunter-Lab	65.7112, 3.1642, 5.3253

Details

The YIQ color **177.0940, 11.5990, 4.5510** is a light color, and the websafe version is hex **999999**. A complement of this color would be **184.9060, -11.5990, -4.5510**, and the grayscale version is **177.0000, -0.0000, 0.0000**.

A 20% lighter version of the original color is **232.3930, 12.1950, 4.7630**, and **124.4960, 10.4070, 4.1270** is the 20% darker color. If you saturate the color by 10%, you get **163.8890, 22.6020, 8.8900**, and if you desaturate by 10%, it is **190.2990, 0.5960, 0.2120**.

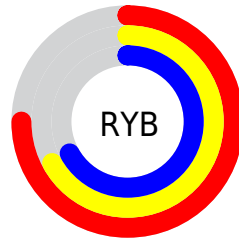
Distribution



Red (75%)

Green (67%)

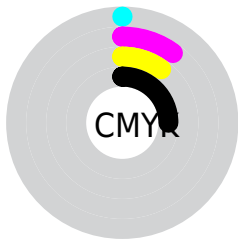
Blue (67%)



Red (75%)

Yellow (67%)

Blue (67%)

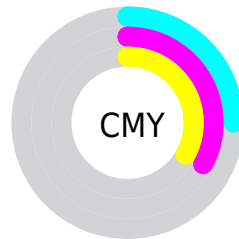


Cyan (0%)

Magenta (10%)

Yellow (10%)

Black (25%)



Cyan (25%)

Magenta (33%)

Yellow (33%)

Brightness & Saturation Gradients

These gradients show how the YIQ color 177.0940, 11.5990, 4.5510 changes by changing the brightness by 10 percent. The first figure shows a shift by +10% for each color and the second figure -10%.

Similar to the brightness gradients but the following saturation gradients show a change of the YIQ color 177.0940, 11.5990, 4.5510 by changing the saturation by 10% instead.

■ 177.0940, 11.5990,
4.5510

■ 177.0940, 11.5990,
4.5510

255.0000, -0.0000,
-0.0000

■ 150.0940, 11.5990,
4.5510

■ 232.3930, 12.1950,
4.7630

■ 124.4960, 10.4070,
4.1270

■ 99.4960, 10.4070,
4.1270

■ 75.1970, 9.8110,
3.9150

■ 52.8980, 9.2150,
3.7030

■ 31.5990, 8.6190,
3.4910

■ 6.9910, 13.3870,

5.1870

■ 0.0000, 0.0000,
0.0000

■ 177.0940, 11.5990,
4.5510

■ 177.0940, 11.5990,
4.5510

■ 163.8890, 22.6020,
8.8900

■ 190.2990, 0.5960,
0.2120

■ 150.6840, 33.6050,
13.2290

■ 203.5040,
-10.4070, -4.1270

■ 137.4790, 44.6080,
17.5680

■ 216.7090,
-21.4100, -8.4660

■ 124.1600, 55.9320,
21.5960

■ 230.0280,
-32.7340, -12.4940

■ 110.3680, 67.2100,
26.4580

■ 235.8640,
-38.1440, -13.5680

■ 97.1630, 78.2130,
30.7970

■ 83.9580, 89.2160,
35.1360

■ 70.7530, 100.2190,
39.4750

■ 58.2490, 110.6260,
43.6020

Harmonies

Analogous

The Analogous color harmony consists of three colors that are next to each other on the color wheel.



176.9950, 7.5640, 6.0920



177.0940, 11.5990, 4.5510



176.6980, 12.6540, 1.9500

Triad

The Triadic color harmony groups three colors that are evenly spaced from another and form a triangle on the color wheel.



177.0940, 11.5990, 4.5510



173.9410, -1.5120, -5.6400



174.7800, -11.0040, 1.1880

Complementary

The Complementary color scheme is a pair of colors which are on the opposite of each other on the color wheel.



177.0940, 11.5990, 4.5510



184.9060, -11.5990, -4.5510

Split Complementary

Split-complementary colors differ from the complementary color scheme. The scheme consists of three colors, the original color and two neighbors of the complement color.



174.0030, -13.2500, -2.1620



177.0940, 11.5990, 4.5510



173.7060, -8.1600, -6.3040

Square

The Square scheme is like the rectangle color scheme, but the four colors are evenly spaced on the color wheel.



177.0940, 11.5990, 4.5510



175.0020, 5.6860, -3.9300



173.6070, -12.1950, -4.7630



175.9980, -5.6860, 3.9300

Rectangle

The Rectangle color scheme consists of four colors that form a rectangle on the color wheel.



177.0940, 11.5990, 4.5510



176.0460, 11.5540, -0.1420



173.6070, -12.1950, -4.7630



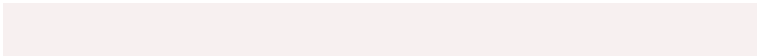
174.6550, -12.1500, -0.0700

Sweetspot

The Sweet Spot groups the original color and five complimentary colors.



177.0940, 11.5990, 4.5510



242.0930, 4.1720, 1.4840



178.9610, 4.9040, 10.2480



121.4950, 2.9800, 1.0600



252.0000, 0.0000, 0.0000



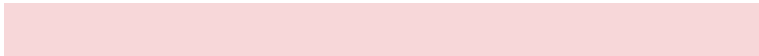
125.0000, 0.0000, 0.0000

Same Dimension

The Same Dimension uses a secret algorithm to generate beautiful new colors.



177.0940, 11.5990, 4.5510



224.7960, 18.4300, 7.4060



182.2630, 9.4450, -0.4670



87.6910, 5.3640, 1.9080



48.1540, 91.6000, 35.9840



9.4970, 17.8340, 7.1940

Inverse Universe

The Inverse Universe completely reimagines the original color for something new.



177.0940, 11.5990, 4.5510



224.7960, 18.4300, 7.4060



179.7370, -9.4450, 0.4670



87.6910, 5.3640, 1.9080



48.1540, 91.6000, 35.9840



9.4970, 17.8340, 7.1940

Previews

White Background



This preview shows how the YIQ color 177.0940, 11.5990, 4.5510 looks on a white background.

Color Contrast Check

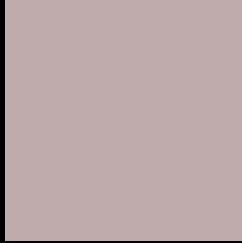
Large Text (above 18pt) WCAG AA × Fail

Any Text WCAG AA × Fail

Large Text (above 18pt) WCAG AAA × Fail

Any Text WCAG AAA × Fail

Black Background



This preview shows how the YIQ color 177.0940, 11.5990, 4.5510 looks on a black background.

Color Contrast Check

Large Text (above 18pt) WCAG AA ✓ Pass

Any Text WCAG AA ✓ Pass

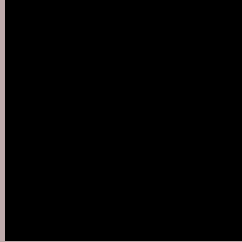
Large Text (above 18pt) WCAG AAA ✓ Pass

Any Text WCAG AAA ✓ Pass

If you want to check with other color combinations, try the [Color Contrast Checker](#).

YIQ 177.0940, 11.5990, 4.5510

Background



This preview shows how black text looks on a background with the YIQ color 177.0940, 11.5990, 4.5510.



This preview shows how white text looks on a background with the YIQ color 177.0940, 11.5990,

4.5510.

Color Blindness Simulation

Color vision deficiency is a very complex topic, and I could not describe the different causes any better than Wikipedia does, so if you want to learn more, you should check out their [article about color blindness](#).

Dichromacy



Original Color

177.0940, 11.5990, 4.5510

Protanopia

176.0820, 2.7050, 0.5370

Deuteranopia

177.4040, 13.6620, 5.7100



Tritanopia

177.4730, 9.2140, 9.2300

Trichromacy



Original Color

177.0940, 11.5990, 4.5510

Protanomaly

176.5770, 5.6850, 1.5970

Deuteranomaly

177.1050, 13.0660, 5.4980

Tritanomaly

177.6040, 10.2230, 7.4630

Monochromacy



Original Color

177.0940, 11.5990, 4.5510

Achromatopsia

177.0000, -0.0000, 0.0000

Achromatomaly

177.0930, 4.1720, 1.4840

CSS Examples

Text

The CSS property to change the color of the text to YIQ 177.0940, 11.5990, 4.5510 is called "color". The color property can be set on classes, ids or directly on the HTML element.

This example shows how text in the color `rgb(191, 171, 172)` looks like.

```
.text, #text, p{  
    color:rgb(191, 171, 172)  
}
```

If you want to add a text shadow in that color use the text-shadow property, you can generate a text shadow directly with our [CSS Text Shadow Generator](#).

Here you see how black text with a 4 pixel rgb(191, 171, 172) colored shadow looks like.

```
.shadow{ text-shadow: 4px 4px 2px rgb(191, 171, 172) }
```

Border

The CSS property to change the border of an element to YIQ 177.0940, 11.5990, 4.5510 is called "border". The border property can be set on classes, ids or directly on the HTML element.

This example shows the color as border, it can be applied via the CSS property "border" or "border-color".

```
.border, #border, table{ border:4px solid rgb(191, 171, 172) }
```


If only the border color should be changed use the property `border-color`.

```
.border{ border-color:rgb(191, 171, 172) }
```

If you want to add a box shadow in that color use:

Here you see how a box with a 4 pixel `rgb(191, 171, 172)` colored shadow looks like.

```
.boxshadow{ -moz-box-shadow:4px 4px 4px  
4px rgb(191, 171, 172); -webkit-box-  
shadow:4px 4px 4px 4px rgb(191, 171, 172);  
box-shadow:4px 4px 4px 4px rgb(191, 171,  
172) }
```

Background

The CSS property to change the background color of an element to YIQ 177.0940, 11.5990, 4.5510 is called "background". The background property can be set on classes, ids or directly on the HTML element.

```
.background, #background, body{  
background: rgb(191, 171, 172) }
```

If only the background color should be changed can be used:

```
.background{ background-color: rgb(191,  
171, 172) }
```

This example shows the color as background, it is applied via the CSS property "background".

To optimize and compress your CSS code, you can use our [online CSS compressor and optimizer](#) based on csstidy. If you want to create a linear or radial gradient as background or border, check our [CSS Gradient Generator](#).

Hey! You found this booklet interesting? Support Converting Colors with the new Membership Option!

The pro membership hides all ads, plus gives you double the colors in the color bucket, and more awesome pro features!

[Learn more, Memberships starting at \\$2.50/m!](#)

**Follow me
on Twitter!**

@ConvertingColor