

Converting Colors

YIQ(177.2010, 48.6870, 26.2470)

Have a look what the booklet for
YIQ(177.2010, 48.6870, 26.2470)
contains.

YIQ(177.2010, 48.6870, 26.2470)	3
<i>Conversions</i>	4
<i>Details</i>	6
<i>Harmonies</i>	12
<i>Previews</i>	24
<i>Color Blindness Simulation</i>	28
<i>CSS Examples</i>	31

Color

**YIQ(177.2010, 48.6870,
26.2470)**

Conversions

Conversions Part 1

Format	Color
Hex	F093A8
RGB	240, 147, 168
RGB Percent	94%, 58%, 66%
CMY	0.0586, 0.4237, 0.3410
CMYK	0.00, 0.39, 0.30, 0.06
HSL	346°, 76%, 76%
HSV	346°, 39%, 94%
XYZ	53.4552, 42.2199, 42.3997
YIQ	177.2010, 48.6870, 26.2470

Conversions

Conversions Part 2

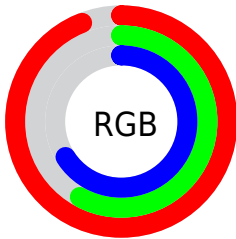
Format	Color
R _Y B	240, 147, 168
Decimal	15766440
CIE Lab	71.02, 37.62, 3.99
CIE LCh	71, 37.834, 6.053
Yxy	42.2199, 0.3871, 0.3058
Android (android.graphics.Color)	4293956520 (0xFFFF093A8)
YUV	177.2010, -4.5361, 55.0747
Hunter-Lab	64.9768, 33.1392, 6.7949

Details

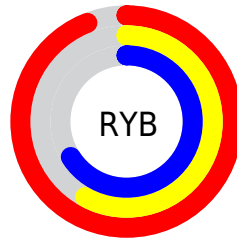
The YIQ color **177.2010, 48.6870, 26.2470** is a light color, and the websafe version is hex **FF9999**. A complement of this color would be **209.7990, -48.6870, -26.2470**, and the grayscale version is **177.0000, -0.0000, 0.0000**.

A 20% lighter version of the original color is **220.2410, 24.8470, 17.7670**, and **123.4070, 45.1110, 24.9750** is the 20% darker color. If you saturate the color by 10%, you get **160.9470, 61.3860, 32.8900**, and if you desaturate by 10%, it is **193.4550, 35.9880, 19.6040**.

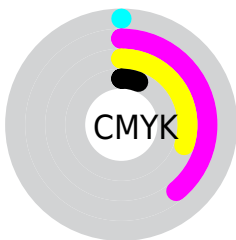
Distribution



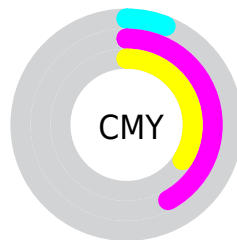
- Red (94%)
- Green (58%)
- Blue (66%)



- Red (94%)
- Yellow (58%)
- Blue (66%)



- Cyan (0%)
- Magenta (39%)
- Yellow (30%)
- Black (6%)



- Cyan (6%)
- Magenta (42%)
- Yellow (34%)

Brightness & Saturation Gradients

These gradients show how the YIQ color 177.2010, 48.6870, 26.2470 changes by changing the brightness by 10 percent. The first figure shows a shift by +10% for each color and the second figure -10%.

Similar to the brightness gradients but the following saturation gradients show a change of the YIQ color 177.2010, 48.6870, 26.2470 by changing the saturation by 10% instead.

177.2010, 48.6870,
26.2470

177.2010, 48.6870,
26.2470

255.0000, -0.0000,
-0.0000

149.7170, 47.1740,
26.1340

220.2410, 24.8470,
17.7670

123.4070, 45.1110,
24.9750

240.5700, 7.5630,
11.6190

97.0370, 43.2770,
25.1730

71.2540, 41.1680,
24.8480

44.8240, 39.5630,
26.4030

24.4920, 34.5660,
23.3500

15.0640, 29.4790,

10.9110

■ 0.0000, 0.0000,
0.0000

■ 177.2010, 48.6870,
26.2470

■ 177.2010, 48.6870,
26.2470

■ 160.9470, 61.3860,
32.8900

■ 193.4550, 35.9880,
19.6040

■ 144.8070, 73.7640,
39.8440

■ 209.5950, 23.6100,
12.6500

■ 128.5530, 86.4630,
46.4870

■ 225.8490, 10.9110,
6.0070

■ 112.4130, 98.8410,
53.4410

■ 241.9890, -1.4670,
-0.9470

■ 96.1590, 111.5400,
60.0840

■ 250.5150, -8.9400,
-3.1800

■ 80.0190, 123.9180,
67.0380

■ 77.9160, 125.7060,
67.6740

Harmonies

Analogous

The Analogous color harmony consists of three colors that are next to each other on the color wheel.



178.3420, 26.5410, 31.1250



177.2010, 48.6870, 26.2470



175.7760, 56.7130, 12.9450

Triad

The Triadic color harmony groups three colors that are evenly spaced from another and form a triangle on the color wheel.



177.2010, 48.6870, 26.2470



167.0930, 3.0310, -27.4090



157.9240, -81.9310, -7.4590

Complementary

The Complementary color scheme is a pair of colors which are on the opposite of each other on the color wheel.



177.2010, 48.6870, 26.2470



209.7990, -48.6870, -26.2470

Split Complementary

Split-complementary colors differ from the complementary color scheme. The scheme consists of three colors, the original color and two neighbors of the complement color.



144.7710, -104.2100, -27.7140



177.2010, 48.6870, 26.2470



161.2490, -32.6390, -30.7430

Square

The Square scheme is like the rectangle color scheme, but the four colors are evenly spaced on the color wheel.



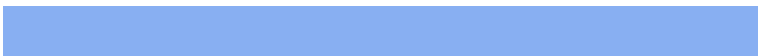
177.2010, 48.6870, 26.2470



170.9180, 31.6850, -18.0670



152.0610, -73.0320, -31.0800



170.9770, -44.7510, 12.5690

Rectangle

The Rectangle color scheme consists of four colors that form a rectangle on the color wheel.



177.2010, 48.6870, 26.2470



174.0710, 53.9640, 2.1880



152.0610, -73.0320, -31.0800



152.4340, -92.4750, -14.6110

Sweetspot

The Sweet Spot groups the original color and five complimentary colors.



177.2010, 48.6870, 26.2470



234.0670, 16.2290, 8.7490



178.8310, 12.4630, 43.9750



115.8380, 9.4440, 5.0600



0.0000, 0.0000, 0.0000



128.0000, -0.0000, -0.0000

Same Dimension

The Same Dimension uses a secret algorithm to generate beautiful new colors.



177.2010, 48.6870, 26.2470



173.9580, 62.8530, 33.8370



189.4820, 48.5530, 6.6410



111.9300, 6.1890, 3.4770



59.8040, 96.1820, 52.0700



18.2260, 29.2030, 15.9150

Inverse Universe

The Inverse Universe completely reimagines the original color for something new.



177.2010, 48.6870, 26.2470



173.9580, 62.8530, 33.8370



197.5180, -48.5530, -6.6410



111.9300, 6.1890, 3.4770



59.8040, 96.1820, 52.0700



18.2260, 29.2030, 15.9150

Previews

White Background



This preview shows how the YIQ color 177.2010, 48.6870, 26.2470 looks on a white background.

Color Contrast Check

Large Text (above 18pt) WCAG AA × Fail

Any Text WCAG AA × Fail

Large Text (above 18pt) WCAG AAA × Fail

Any Text WCAG AAA × Fail

Black Background



This preview shows how the YIQ color 177.2010, 48.6870, 26.2470 looks on a black background.

Color Contrast Check

Large Text (above 18pt) WCAG AA ✓ Pass

Any Text WCAG AA ✓ Pass

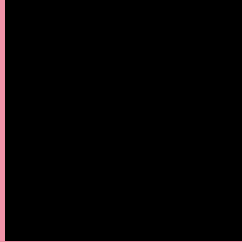
Large Text (above 18pt) WCAG AAA ✓ Pass

Any Text WCAG AAA ✓ Pass

If you want to check with other color combinations, try the [Color Contrast Checker](#).

YIQ 177.2010, 48.6870, 26.2470

Background



This preview shows how black text looks on a background with the YIQ color 177.2010, 48.6870, 26.2470.



This preview shows how white text looks on a background with the YIQ color 177.2010, 48.6870,

Color Blindness Simulation

Color vision deficiency is a very complex topic, and I could not describe the different causes any better than Wikipedia does, so if you want to learn more, you should check out their [article about color blindness](#).

Dichromacy



Original Color

177.2010, 48.6870, 26.2470

Protanopia

174.7380, -2.0180, 3.5340

Deuteranopia

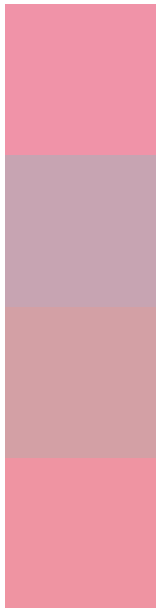
175.6170, 17.3760, 4.4800



Tritanopia

176.4630, 50.7050, 22.7130

Trichromacy



Original Color

177.2010, 48.6870, 26.2470

Protanomaly

176.0610, 16.3660, 11.7740

Deuteranomaly

175.8190, 28.7910, 12.3670

Tritanomaly

176.8050, 49.7420, 23.6460

Monochromacy



Original Color

177.2010, 48.6870, 26.2470

Achromatopsia

177.0000, -0.0000, 0.0000

Achromatomaly

177.0780, 17.6960, 9.6960

CSS Examples

Text

The CSS property to change the color of the text to YIQ 177.2010, 48.6870, 26.2470 is called "color". The color property can be set on classes, ids or directly on the HTML element.

This example shows how text in the color `rgb(240, 147, 168)` looks like.

```
.text, #text, p{  
    color:rgb(240, 147, 168)  
}
```

If you want to add a text shadow in that color use the text-shadow property, you can generate a text shadow directly with our [CSS Text Shadow Generator](#).

Here you see how black text with a 4 pixel rgb(240, 147, 168) colored shadow looks like.

```
.shadow{ text-shadow: 4px 4px 2px rgb(240, 147, 168) }
```

Border

The CSS property to change the border of an element to YIQ 177.2010, 48.6870, 26.2470 is called "border". The border property can be set on classes, ids or directly on the HTML element.

This example shows the color as border, it can be applied via the CSS property "border" or "border-color".

```
.border, #border, table{ border:4px solid rgb(240, 147, 168) }
```


If only the border color should be changed use the property `border-color`.

```
.border{ border-color:rgb(240, 147, 168) }
```

If you want to add a box shadow in that color use:

Here you see how a box with a 4 pixel `rgb(240, 147, 168)` colored shadow looks like.

```
.boxshadow{ -moz-box-shadow:4px 4px 4px  
4px rgb(240, 147, 168); -webkit-box-  
shadow:4px 4px 4px 4px rgb(240, 147, 168);  
box-shadow:4px 4px 4px 4px rgb(240, 147,  
168) }
```

Background

The CSS property to change the background color of an element to YIQ 177.2010, 48.6870, 26.2470 is called "background". The background property can be set on classes, ids or directly on the HTML element.

```
.background, #background, body{  
background: rgb(240, 147, 168) }
```

If only the background color should be changed can be used:

```
.background{ background-color: rgb(240,  
147, 168) }
```

This example shows the color as background, it is applied via the CSS property "background".

To optimize and compress your CSS code, you can use our [online CSS compressor and optimizer](#) based on csstidy. If you want to create a linear or radial gradient as background or border, check our [CSS Gradient Generator](#).

Hey! You found this booklet interesting? Support Converting Colors with the new Membership Option!

The pro membership hides all ads, plus gives you double the colors in the color bucket, and more awesome pro features!

[Learn more, Memberships starting at \\$2.50/m!](#)

**Follow me
on Twitter!**

@ConvertingColor