

Converting Colors

YIQ(177.2090, 35.9000, -0.8360)

Have a look what the booklet for
YIQ(177.2090, 35.9000, -0.8360)
contains.

YIQ(177.2090, 35.9000, -0.8360)	3
<i>Conversions</i>	4
<i>Details</i>	6
<i>Harmonies</i>	12
<i>Previews</i>	24
<i>Color Blindness Simulation</i>	28
<i>CSS Examples</i>	31

Color

**YIQ(177.2090, 35.9000,
-0.8360)**

Conversions

Conversions Part 1

Format	Color
Hex	D3A888
RGB	211, 168, 136
RGB Percent	83%, 66%, 53%
CMY	0.1725, 0.3412, 0.4665
CMYK	0.00, 0.20, 0.36, 0.17
HSL	26°, 46%, 68%
HSV	26°, 36%, 83%
XYZ	45.3162, 43.6293, 29.3413
YIQ	177.2090, 35.9000, -0.8360

Conversions

Conversions Part 2

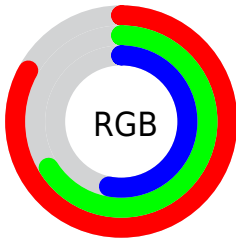
Format	Color
R_{YB}	211, 192, 136
Decimal	13871240
CIE _{Lab}	71.98, 11.38, 22.51
CIE _{LCh}	72, 25.223, 63.170
Yxy	43.6293, 0.3831, 0.3688
Android (android.graphics.Color)	4292061320 (0xFFD3A888)
YUV	177.2090, -20.3160, 29.6347
Hunter-Lab	66.0525, 6.8705, 19.8994

Details

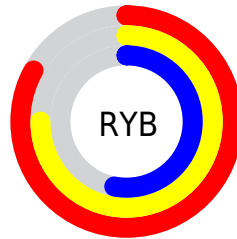
The YIQ color $177.2090, 35.9000, -0.8360$ is a light color, and the websafe version is hex $CC9966$. A complement of this color would be $169.7910, -35.9000, 0.8360$, and the grayscale version is $177.0000, -0.0000, 0.0000$.

A 20% lighter version of the original color is $228.6920, 29.9860, -3.7900$, and $124.2410, 32.8740, -1.0620$ is the 20% darker color. If you saturate the color by 10%, you get $167.7710, 45.9410, -1.0910$, and if you desaturate by 10%, it is $186.6470, 25.8590, -0.5810$.

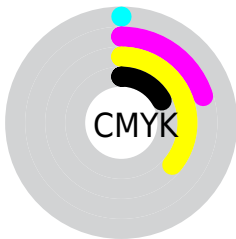
Distribution



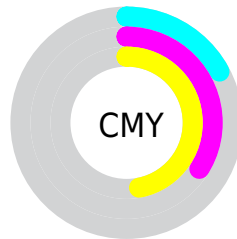
- Red (83%)
- Green (66%)
- Blue (53%)



- Red (83%)
- Yellow (75%)
- Blue (53%)



- Cyan (0%)
- Magenta (20%)
- Yellow (36%)
- Black (17%)



- Cyan (17%)
- Magenta (34%)
- Yellow (47%)

Brightness & Saturation Gradients

These gradients show how the YIQ color 177.2090, 35.9000, -0.8360 changes by changing the brightness by 10 percent. The first figure shows a shift by +10% for each color and the second figure -10%.

Similar to the brightness gradients but the following saturation gradients show a change of the YIQ color 177.2090, 35.9000, -0.8360 by changing the saturation by 10% instead.

■ 177.2090, 35.9000,
-0.8360

■ 177.2090, 35.9000,
-0.8360

255.0000, -0.0000,
-0.0000

■ 150.7250, 34.3870,
-0.9490

■ 228.8060, 29.6650,
-3.4790

■ 124.2410, 32.8740,
-1.0620

■ 248.9070, 13.0230,
-10.2490

■ 98.8710, 31.0400,
-0.8640

■ 253.9740, 2.8890,
-2.7990

■ 74.9740, 29.2520,
-1.5000

■ 51.3050, 26.8220,
-1.5140

■ 29.9350, 24.9880,
-1.3160

■ 8.6710, 17.2840,

6.1480

■ 0.0000, 0.0000,
0.0000

■ 177.2090, 35.9000,
-0.8360

■ 177.2090, 35.9000,
-0.8360

■ 167.7710, 45.9410,
-1.0910

■ 186.6470, 25.8590,
-0.5810

■ 158.3330, 55.9820,
-1.3460

■ 196.0850, 15.8180,
-0.3260

■ 148.8950, 66.0230,
-1.6010

■ 205.5230, 5.7770,
-0.0710

■ 139.4570, 76.0640,
-1.8560

■ 214.9610, -4.2640,
0.1840

■ 129.4320, 86.3800,
-1.5880

■ 225.1000,
-14.9010, 0.2270

■ 119.8800, 96.7420,
-2.1540

■ 233.6260,
-22.3740, -2.0060

■ 115.9190,
101.0060, -2.3380

■ 240.6700,
-25.6740, -8.2820

■ 241.8440,
-26.2240, -9.3280

Harmonies

Analogous

The Analogous color harmony consists of three colors that are next to each other on the color wheel.



178.8000, 38.9700, 9.6100



177.2090, 35.9000, -0.8360



175.3550, 23.3850, -10.8150

Triad

The Triadic color harmony groups three colors that are evenly spaced from another and form a triangle on the color wheel.



177.2090, 35.9000, -0.8360



166.2180, -39.3810, -18.6850



179.0170, -6.6970, 16.7510

Complementary

The Complementary color scheme is a pair of colors which are on the opposite of each other on the color wheel.



177.2090, 35.9000, -0.8360



169.7910, -35.9000, 0.8360

Split Complementary

Split-complementary colors differ from the complementary color scheme. The scheme consists of three colors, the original color and two neighbors of the complement color.



175.2420, -29.6200, 8.1720



177.2090, 35.9000, -0.8360



165.8610, -51.2570, -12.7050

Square

The Square scheme is like the rectangle color scheme, but the four colors are evenly spaced on the color wheel.



177.2090, 35.9000, -0.8360



169.2990, -17.7400, -19.9160



169.5230, -46.9490, -2.6690



180.4450, 15.5850, 20.4250

Rectangle

The Rectangle color scheme consists of four colors that form a rectangle on the color wheel.



177.2090, 35.9000, -0.8360



173.8480, 11.5110, -15.8890



169.5230, -46.9490, -2.6690



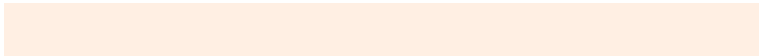
177.6570, -14.4910, 14.8290

Sweetspot

The Sweet Spot groups the original color and five complimentary colors.



177.2090, 35.9000, -0.8360



242.4160, 13.3880, -0.3400



163.4410, 30.5760, 29.5840



120.1920, 8.2070, -0.0570



0.0000, 0.0000, 0.0000



128.0000, -0.0000, -0.0000

Same Dimension

The Same Dimension uses a secret algorithm to generate beautiful new colors.



177.2090, 35.9000, -0.8360



205.4790, 52.6350, -1.2610



198.9280, 25.7250, -20.1870



100.2240, 5.1810, -0.2830



92.4960, 80.3280, -2.0400



22.2380, 19.7610, -0.1990

Inverse Universe

The Inverse Universe completely reimagines the original color for something new.



169.7910, -35.9000, 0.8360



194.5210, -52.6350, 1.2610



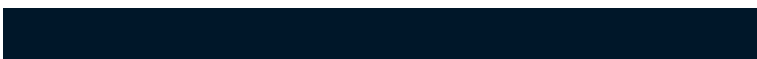
148.0720, -25.7250, 20.1870



98.7760, -5.1810, 0.2830



76.0910, -80.6030, 1.5170



18.1750, -19.4860, 0.7220

Previews

White Background



This preview shows how the YIQ color 177.2090, 35.9000, -0.8360 looks on a white background.

Color Contrast Check

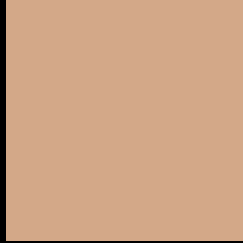
Large Text (above 18pt) WCAG AA × Fail

Any Text WCAG AA × Fail

Large Text (above 18pt) WCAG AAA × Fail

Any Text WCAG AAA × Fail

Black Background



This preview shows how the YIQ color 177.2090, 35.9000, -0.8360 looks on a black background.

Color Contrast Check

Large Text (above 18pt) WCAG AA ✓ Pass

Any Text WCAG AA ✓ Pass

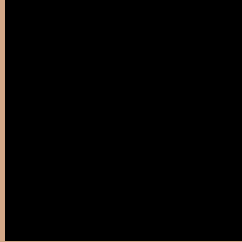
Large Text (above 18pt) WCAG AAA ✓ Pass

Any Text WCAG AAA ✓ Pass

If you want to check with other color combinations, try the [Color Contrast Checker](#).

YIQ 177.2090, 35.9000, -0.8360

Background



This preview shows how black text looks on a background with the YIQ color 177.2090, 35.9000, -0.8360.



This preview shows how white text looks on a background with the YIQ color 177.2090, 35.9000,

-0.8360.

Color Blindness Simulation

Color vision deficiency is a very complex topic, and I could not describe the different causes any better than Wikipedia does, so if you want to learn more, you should check out their [article about color blindness](#).

Dichromacy



Original Color

177.2090, 35.9000, -0.8360

Protanopia

175.4840, 18.7080, -8.6520

Deuteranopia

176.6000, 33.2410, -2.2070



Tritanopia

179.9160, 27.1400, 14.7560

Trichromacy



Original Color

177.2090, 35.9000, -0.8360

Protanomaly

176.0010, 24.6220, -5.6980

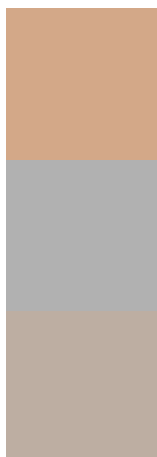
Deuteranomaly

176.8990, 33.8370, -1.9950

Tritanomaly

179.1950, 30.4880, 9.1440

Monochromacy



Original Color

177.2090, 35.9000, -0.8360

Achromatopsia

177.0000, -0.0000, 0.0000

Achromatomaly

177.1170, 12.7920, -0.5520

CSS Examples

Text

The CSS property to change the color of the text to YIQ 177.2090, 35.9000, -0.8360 is called "color". The color property can be set on classes, ids or directly on the HTML element.

This example shows how text in the color `rgb(211, 168, 136)` looks like.

```
.text, #text, p{  
    color:rgb(211, 168, 136)  
}
```

If you want to add a text shadow in that color use the text-shadow property, you can generate a text shadow directly with our [CSS Text Shadow Generator](#).

Here you see how black text with a 4 pixel rgb(211, 168, 136) colored shadow looks like.

```
.shadow{ text-shadow: 4px 4px 2px rgb(211, 168, 136) }
```

Border

The CSS property to change the border of an element to YIQ 177.2090, 35.9000, -0.8360 is called "border". The border property can be set on classes, ids or directly on the HTML element.

This example shows the color as border, it can be applied via the CSS property "border" or "border-color".

```
.border, #border, table{ border:4px solid rgb(211, 168, 136) }
```


If only the border color should be changed use the property `border-color`.

```
.border{ border-color:rgb(211, 168, 136) }
```

If you want to add a box shadow in that color use:

Here you see how a box with a 4 pixel `rgb(211, 168, 136)` colored shadow looks like.

```
.boxshadow{ -moz-box-shadow:4px 4px 4px  
4px rgb(211, 168, 136); -webkit-box-  
shadow:4px 4px 4px 4px rgb(211, 168, 136);  
box-shadow:4px 4px 4px 4px rgb(211, 168,  
136) }
```

Background

The CSS property to change the background color of an element to YIQ 177.2090, 35.9000, -0.8360 is called "background". The background property can be set on classes, ids or directly on the HTML element.

```
.background, #background, body{  
background: rgb(211, 168, 136) }
```

If only the background color should be changed can be used:

```
.background{ background-color: rgb(211,  
168, 136) }
```

This example shows the color as background, it is applied via the CSS property "background".

To optimize and compress your CSS code, you can use our [online CSS compressor and optimizer](#) based on csstidy. If you want to create a linear or radial gradient as background or border, check our [CSS Gradient Generator](#).

Hey! You found this booklet interesting? Support Converting Colors with the new Membership Option!

The pro membership hides all ads, plus gives you double the colors in the color bucket, and more awesome pro features!

[Learn more, Memberships starting at \\$2.50/m!](#)

**Follow me
on Twitter!**

@ConvertingColor