

Converting Colors

YIQ(178.7070, 8.4350, 6.8270)

Have a look what the booklet for
YIQ(178.7070, 8.4350, 6.8270)
contains.

YIQ(178.7070, 8.4350, 6.8270)	3
<i>Conversions</i>	4
<i>Details</i>	6
<i>Harmonies</i>	12
<i>Previews</i>	24
<i>Color Blindness Simulation</i>	28
<i>CSS Examples</i>	31

Color

**YIQ(178.7070, 8.4350,
6.8270)**

Conversions

Conversions Part 1

Format	Color
Hex	BFACB5
RGB	191, 172, 181
RGB Percent	75%, 67%, 71%
CMY	0.2509, 0.3255, 0.2902
CMYK	0.00, 0.10, 0.05, 0.25
HSL	332°, 13%, 71%
HSV	332°, 10%, 75%
XYZ	44.5813, 43.9165, 49.8467
YIQ	178.7070, 8.4350, 6.8270

Conversions

Conversions Part 2

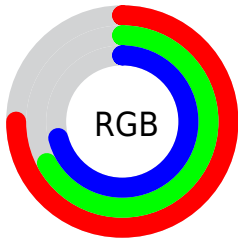
Format	Color
R_{YB}	191, 172, 181
Decimal	12561589
CIE Lab	72.17, 8.43, -2.12
CIE LCh	72, 8.693, 345.881
Yxy	43.9165, 0.3222, 0.3174
Android (android.graphics.Color)	4290751669 (0xFFBFACB5)
YUV	178.7070, 1.1304, 10.7810
Hunter-Lab	66.2696, 4.1100, 1.7918

Details

The YIQ color **178.7070, 8.4350, 6.8270** is a light color, and the websafe version is hex **999999**. A complement of this color would be **184.2930, -8.4350, -6.8270**, and the grayscale version is **179.0000, -0.0000, -0.0000**.

A 20% lighter version of the original color is **234.1200, 8.7100, 7.3500**, and **126.2940, 8.1600, 6.3040** is the 20% darker color. If you saturate the color by 10%, you get **166.4140, 16.8700, 13.6540**, and if you desaturate by 10%, it is **191.0000, -0.0000, -0.0000**.

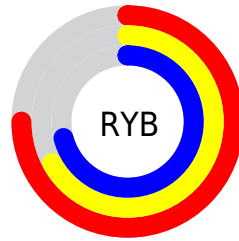
Distribution



Red (75%)

Green (67%)

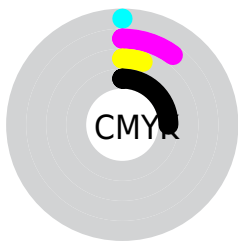
Blue (71%)



Red (75%)

Yellow (67%)

Blue (71%)

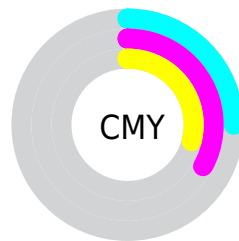


Cyan (0%)

Magenta (10%)

Yellow (5%)

Black (25%)



Cyan (25%)

Magenta (33%)

Yellow (29%)

Brightness & Saturation Gradients

These gradients show how the YIQ color 178.7070, 8.4350, 6.8270 changes by changing the brightness by 10 percent. The first figure shows a shift by +10% for each color and the second figure -10%.

Similar to the brightness gradients but the following saturation gradients show a change of the YIQ color 178.7070, 8.4350, 6.8270 by changing the saturation by 10% instead.

■ 178.7070, 8.4350,
6.8270

■ 178.7070, 8.4350,
6.8270

255.0000, -0.0000,
-0.0000

■ 151.7070, 8.4350,
6.8270

■ 234.1200, 8.7100,
7.3500

■ 126.2940, 8.1600,
6.3040

■ 100.9950, 7.5640,
6.0920

■ 76.9950, 7.5640,
6.0920

■ 54.2830, 6.6930,
5.3570

■ 32.9840, 6.0970,
5.1450

■ 9.5330, 8.9850,

7.8730

■ 0.0000, 0.0000,
0.0000

■ 178.7070, 8.4350,
6.8270

■ 178.7070, 8.4350,
6.8270

■ 166.4140, 16.8700,
13.6540

■ 191.0000, -0.0000,
-0.0000

■ 154.1210, 25.3050,
20.4810

■ 203.2930, -8.4350,
-6.8270

■ 141.8280, 33.7400,
27.3080

■ 215.5860,
-16.8700, -13.6540

■ 129.5350, 42.1750,
34.1350

■ 227.8790,
-25.3050, -20.4810

■ 116.6550, 50.8850,
41.4850

■ 233.1280,
-30.4400, -21.0320

■ 104.3620, 59.3200,
48.3120

■ 234.2680,
-33.6500, -17.9220

■ 92.0690, 67.7550,
55.1390

■ 235.4080,
-36.8600, -14.8120

■ 79.7760, 76.1900,
61.9660

■ 235.8640,
-38.1440, -13.5680

■ 67.4830, 84.6250,
68.7930

Harmonies

Analogous

The Analogous color harmony consists of three colors that are next to each other on the color wheel.



178.5860, 1.4660, 6.4740



178.7070, 8.4350, 6.8270



178.6920, 12.7910, 4.9750

Triad

The Triadic color harmony groups three colors that are evenly spaced from another and form a triangle on the color wheel.



178.7070, 8.4350, 6.8270



176.4750, 5.7320, -4.7640



175.2200, -15.3590, -2.4870

Complementary

The Complementary color scheme is a pair of colors which are on the opposite of each other on the color wheel.



178.7070, 8.4350, 6.8270



184.2930, -8.4350, -6.8270

Split Complementary

Split-complementary colors differ from the complementary color scheme. The scheme consists of three colors, the original color and two neighbors of the complement color.



174.7100, -13.9830, -5.3990



178.7070, 8.4350, 6.8270



175.4140, -1.4660, -6.4740

Square

The Square scheme is like the rectangle color scheme, but the four colors are evenly spaced on the color wheel.



178.7070, 8.4350, 6.8270



177.1060, 11.3250, -1.4990



174.4070, -8.7560, -6.5160



176.2960, -12.5170, 1.0750

Rectangle

The Rectangle color scheme consists of four colors that form a rectangle on the color wheel.



178.7070, 8.4350, 6.8270



178.1220, 14.3960, 3.4200



174.4070, -8.7560, -6.5160



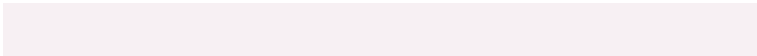
174.6930, -15.3130, -3.3210

Sweetspot

The Sweet Spot groups the original color and five complimentary colors.



178.7070, 8.4350, 6.8270



242.4350, 3.2090, 2.4170



177.1560, -0.1390, 8.0290



121.7230, 2.3380, 1.6820



252.0000, 0.0000, 0.0000



125.0000, 0.0000, 0.0000

Same Dimension

The Same Dimension uses a secret algorithm to generate beautiful new colors.



178.7070, 8.4350, 6.8270



228.2670, 12.7900, 10.5020



177.6810, 11.3240, 4.0280



88.1470, 4.0800, 3.1520



55.7920, 70.0930, 56.8210



10.8650, 13.9820, 10.9260

Inverse Universe

The Inverse Universe completely reimagines the original color for something new.



178.7070, 8.4350, 6.8270



228.2670, 12.7900, 10.5020



185.3190, -11.3240, -4.0280



88.1470, 4.0800, 3.1520



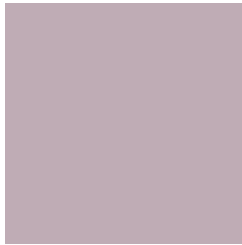
55.7920, 70.0930, 56.8210



10.8650, 13.9820, 10.9260

Previews

White Background



This preview shows how the YIQ color 178.7070, 8.4350, 6.8270 looks on a white background.

Color Contrast Check

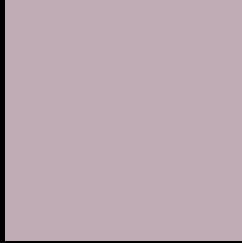
Large Text (above 18pt) WCAG AA × Fail

Any Text WCAG AA × Fail

Large Text (above 18pt) WCAG AAA × Fail

Any Text WCAG AAA × Fail

Black Background



This preview shows how the YIQ color 178.7070, 8.4350, 6.8270 looks on a black background.

Color Contrast Check

Large Text (above 18pt) WCAG AA ✓ Pass

Any Text WCAG AA ✓ Pass

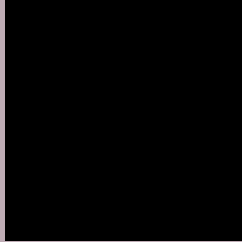
Large Text (above 18pt) WCAG AAA ✓ Pass

Any Text WCAG AAA ✓ Pass

If you want to check with other color combinations, try the [Color Contrast Checker](#).

YIQ 178.7070, 8.4350, 6.8270

Background



This preview shows how black text looks on a background with the YIQ color 178.7070, 8.4350, 6.8270.



This preview shows how white text looks on a background with the YIQ color 178.7070, 8.4350,

6.8270.

Color Blindness Simulation

Color vision deficiency is a very complex topic, and I could not describe the different causes any better than Wikipedia does, so if you want to learn more, you should check out their [article about color blindness](#).

Dichromacy



Original Color

178.7070, 8.4350, 6.8270

Protanopia

177.3960, -1.0550, 2.6010

Deuteranopia

179.0060, 9.0310, 7.0390



Tritanopia

178.8750, 8.0220, 8.8060

Trichromacy



Original Color

178.7070, 8.4350, 6.8270

Protanomaly

178.1900, 2.5210, 3.8730

Deuteranomaly

179.0060, 9.0310, 7.0390

Tritanomaly

178.7610, 8.3430, 8.4950

Monochromacy



Original Color

178.7070, 8.4350, 6.8270

Achromatopsia

179.0000, -0.0000, -0.0000

Achromatomaly

178.5490, 2.8880, 2.7280

CSS Examples

Text

The CSS property to change the color of the text to YIQ 178.7070, 8.4350, 6.8270 is called "color". The color property can be set on classes, ids or directly on the HTML element.

This example shows how text in the color `rgb(191, 172, 181)` looks like.

```
.text, #text, p{  
    color:rgb(191, 172, 181)  
}
```

If you want to add a text shadow in that color use the text-shadow property, you can generate a text shadow directly with our [CSS Text Shadow Generator](#).

Here you see how black text with a 4 pixel rgb(191, 172, 181) colored shadow looks like.

```
.shadow{ text-shadow: 4px 4px 2px rgb(191, 172, 181) }
```

Border

The CSS property to change the border of an element to YIQ 178.7070, 8.4350, 6.8270 is called "border". The border property can be set on classes, ids or directly on the HTML element.

This example shows the color as border, it can be applied via the CSS property "border" or "border-color".

```
.border, #border, table{ border:4px solid rgb(191, 172, 181) }
```


If only the border color should be changed use the property `border-color`.

```
.border{ border-color:rgb(191, 172, 181) }
```

If you want to add a box shadow in that color use:

Here you see how a box with a 4 pixel `rgb(191, 172, 181)` colored shadow looks like.

```
.boxshadow{ -moz-box-shadow:4px 4px 4px  
4px rgb(191, 172, 181); -webkit-box-  
shadow:4px 4px 4px 4px rgb(191, 172, 181);  
box-shadow:4px 4px 4px 4px rgb(191, 172,  
181) }
```

Background

The CSS property to change the background color of an element to YIQ 178.7070, 8.4350, 6.8270 is called "background". The background property can be set on classes, ids or directly on the HTML element.

```
.background, #background, body{  
background: rgb(191, 172, 181) }
```

If only the background color should be changed can be used:

```
.background{ background-color: rgb(191,  
172, 181) }
```

This example shows the color as background, it is applied via the CSS property "background".

To optimize and compress your CSS code, you can use our [online CSS compressor and optimizer](#) based on csstidy. If you want to create a linear or radial gradient as background or border, check our [CSS Gradient Generator](#).

Hey! You found this booklet interesting? Support Converting Colors with the new Membership Option!

The pro membership hides all ads, plus gives you double the colors in the color bucket, and more awesome pro features!

[Learn more, Memberships starting at \\$2.50/m!](#)

**Follow me
on Twitter!**

@ConvertingColor