

Converting Colors

YIQ(178.9550, 22.2360, 4.5080)

Have a look what the booklet for
YIQ(178.9550, 22.2360, 4.5080)
contains.

YIQ(178.9550, 22.2360, 4.5080)	3
<i>Conversions</i>	4
<i>Details</i>	6
<i>Harmonies</i>	12
<i>Previews</i>	24
<i>Color Blindness Simulation</i>	28
<i>CSS Examples</i>	31

Color

**YIQ(178.9550, 22.2360,
4.5080)**

Conversions

Conversions Part 1

Format	Color
Hex	CBAAA2
RGB	203, 170, 162
RGB Percent	80%, 67%, 64%
CMY	0.2038, 0.3334, 0.3646
CMYK	0.00, 0.16, 0.20, 0.20
HSL	12°, 28%, 72%
HSV	12°, 20%, 80%
XYZ	45.5296, 44.0529, 40.2970
YIQ	178.9550, 22.2360, 4.5080

Conversions

Conversions Part 2

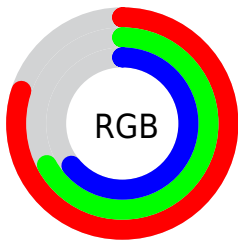
Format	Color
RYB	203, 172, 162
Decimal	13347490
CIELab	72.26, 10.77, 8.59
CIELCh	72, 13.776, 38.553
Yxy	44.0529, 0.3506, 0.3392
Android (android.graphics.Color)	4291537570 (0xFFCBAAA2)
YUV	178.9550, -8.3588, 21.0875
Hunter-Lab	66.3723, 6.2944, 10.4635

Details

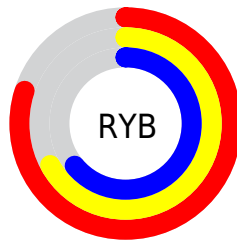
The YIQ color $178.9550, 22.2360, 4.5080$ is a light color, and the websafe version is hex $CC9999$. A complement of this color would be $186.0450, -22.2360, -4.5080$, and the grayscale version is $179.0000, -0.0000, -0.0000$.

A 20% lighter version of the original color is $233.0580, 20.4480, 3.8720$, and $126.0580, 20.4480, 3.8720$ is the 20% darker color. If you saturate the color by 10%, you get $167.2830, 33.0560, 6.6560$, and if you desaturate by 10%, it is $190.6270, 11.4160, 2.3600$.

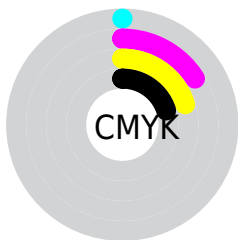
Distribution



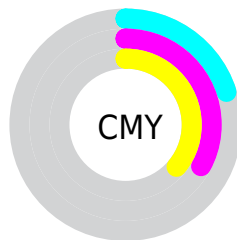
- Red (80%)
- Green (67%)
- Blue (64%)



- Red (80%)
- Yellow (67%)
- Blue (64%)



- Cyan (0%)
- Magenta (16%)
- Yellow (20%)
- Black (20%)





- Cyan (20%)
- Magenta (33%)
- Yellow (36%)

Brightness & Saturation Gradients


These gradients show how the YIQ color 178.9550, 22.2360, 4.5080 changes by changing the brightness by 10 percent. The first figure shows a shift by +10% for each color and the second figure -10%.


Similar to the brightness gradients but the following saturation gradients show a change of the YIQ color 178.9550, 22.2360, 4.5080 by changing the saturation by 10% instead.


 178.9550, 22.2360,
4.5080

 178.9550, 22.2360,
4.5080


255.0000, -0.0000,
-0.0000


 151.7700, 21.3190,
4.6070


 233.0580, 20.4480,
3.8720


 126.0580, 20.4480,
3.8720

 253.2730, 3.4850,
-2.5870

 100.8730, 19.5310,
3.9710

 76.6880, 18.6140,
4.0700

 53.7910, 16.8260,
3.4340

 32.3070, 15.3130,
3.3210

 8.6710, 17.2840,

6.1480

0.0000, 0.0000,
0.0000

178.9550, 22.2360,
4.5080

178.9550, 22.2360,
4.5080

167.2830, 33.0560,
6.6560

190.6270, 11.4160,
2.3600

154.9100, 44.4720,
9.0160

203.0000, 0.0000,
-0.0000

143.2380, 55.2920,
11.1640

214.6720,
-10.8200, -2.1480

131.5660, 66.1120,
13.3120

226.3440,
-21.6400, -4.2960

119.3070, 77.2070,
15.9830

237.6910,
-30.1670, -9.4550

■ 107.5210, 88.3480,
17.8200

■ 239.4520,
-30.9920, -11.0240

■ 95.2620, 99.4430,
20.4910

■ 83.5900, 110.2630,
22.6390

Harmonies

Analogous

The Analogous color harmony consists of three colors that are next to each other on the color wheel.



180.0350, 19.2550, 8.9750



178.9550, 22.2360, 4.5080



177.7110, 19.8070, -1.0330

Triad

The Triadic color harmony groups three colors that are evenly spaced from another and form a triangle on the color wheel.



178.9550, 22.2360, 4.5080



173.8040, -11.5520, -10.9120



177.1590, -13.3890, 5.8670

Complementary

The Complementary color scheme is a pair of colors which are on the opposite of each other on the color wheel.



178.9550, 22.2360, 4.5080



186.0450, -22.2360, -4.5080

Split Complementary

Split-complementary colors differ from the complementary color scheme. The scheme consists of three colors, the original color and two neighbors of the complement color.



175.0930, -22.1910, 0.1850



178.9550, 22.2360, 4.5080



173.0680, -21.0430, -9.6110

Square

The Square scheme is like the rectangle color scheme, but the four colors are evenly spaced on the color wheel.



178.9550, 22.2360, 4.5080



174.6760, 0.5520, -10.0080



173.5500, -25.2160, -5.5680



179.0250, -1.1480, 9.7960

Rectangle

The Rectangle color scheme consists of four colors that form a rectangle on the color wheel.



178.9550, 22.2360, 4.5080



176.8520, 14.8560, -4.9200



173.5500, -25.2160, -5.5680



176.2510, -16.6440, 4.2840

Sweetspot

The Sweet Spot groups the original color and five complimentary colors.



178.9550, 22.2360, 4.5080



246.2460, 8.1150, 1.6110



178.1350, 13.5220, 19.2660



122.2780, 5.0890, 1.3850



0.0000, 0.0000, 0.0000



128.0000, -0.0000, -0.0000

Same Dimension

The Same Dimension uses a secret algorithm to generate beautiful new colors.



178.9550, 22.2360, 4.5080



219.2830, 33.0560, 6.6560



190.6950, 16.7360, -5.9520



96.1640, 5.4100, 1.0740



68.4180, 90.1360, 18.4560



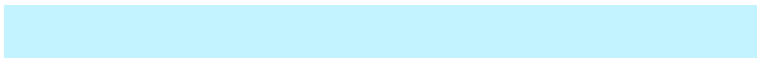
15.4710, 20.7230, 4.3950

Inverse Universe

The Inverse Universe completely reimagines the original color for something new.



186.0450, -22.2360, -4.5080



229.7170, -33.0560, -6.6560



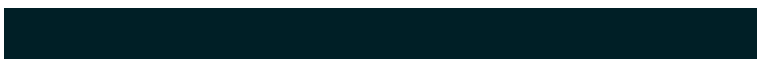
174.3050, -16.7360, 5.9520



97.8360, -5.4100, -1.0740



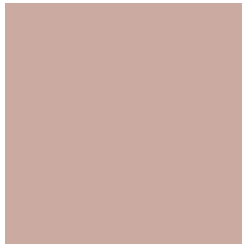
97.5820, -90.1360, -18.4560



22.5290, -20.7230, -4.3950

Previews

White Background



This preview shows how the YIQ color 178.9550, 22.2360, 4.5080 looks on a white background.

Color Contrast Check

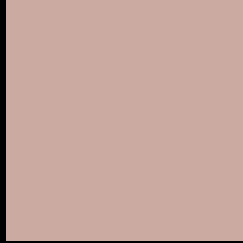
Large Text (above 18pt) WCAG AA × Fail

Any Text WCAG AA × Fail

Large Text (above 18pt) WCAG AAA × Fail

Any Text WCAG AAA × Fail

Black Background



This preview shows how the YIQ color 178.9550, 22.2360, 4.5080 looks on a black background.

Color Contrast Check

Large Text (above 18pt) WCAG AA ✓ Pass

Any Text WCAG AA ✓ Pass

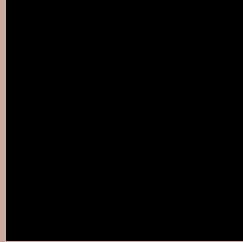
Large Text (above 18pt) WCAG AAA ✓ Pass

Any Text WCAG AAA ✓ Pass

If you want to check with other color combinations, try the [Color Contrast Checker](#).

YIQ 178.9550, 22.2360, 4.5080

Background



This preview shows how black text looks on a background with the YIQ color 178.9550, 22.2360, 4.5080.



This preview shows how white text looks on a background with the YIQ color 178.9550, 22.2360,

4.5080.

Color Blindness Simulation

Color vision deficiency is a very complex topic, and I could not describe the different causes any better than Wikipedia does, so if you want to learn more, you should check out their [article about color blindness](#).

Dichromacy



Original Color

178.9550, 22.2360, 4.5080

Protanopia

177.5400, 7.1070, -2.1490

Deuteranopia

178.6450, 20.1730, 3.3490



Tritanopia

179.8440, 18.4750, 12.0990

Trichromacy



Original Color

178.9550, 22.2360, 4.5080

Protanomaly

177.7580, 12.4250, 0.5930

Deuteranomaly

178.9440, 20.7690, 3.5610

Tritanomaly

179.3340, 19.8510, 9.1870

Monochromacy



Original Color

178.9550, 22.2360, 4.5080

Achromatopsia

179.0000, -0.0000, -0.0000

Achromatomaly

179.2460, 8.1150, 1.6110

CSS Examples

Text

The CSS property to change the color of the text to YIQ 178.9550, 22.2360, 4.5080 is called "color". The color property can be set on classes, ids or directly on the HTML element.

This example shows how text in the color `rgb(203, 170, 162)` looks like.

```
.text, #text, p{  
    color:rgb(203, 170, 162)  
}
```

If you want to add a text shadow in that color use the text-shadow property, you can generate a text shadow directly with our [CSS Text Shadow Generator](#).

Here you see how black text with a 4 pixel rgb(203, 170, 162) colored shadow looks like.

```
.shadow{ text-shadow: 4px 4px 2px rgb(203, 170, 162) }
```

Border

The CSS property to change the border of an element to YIQ 178.9550, 22.2360, 4.5080 is called "border". The border property can be set on classes, ids or directly on the HTML element.

This example shows the color as border, it can be applied via the CSS property "border" or "border-color".

```
.border, #border, table{ border:4px solid rgb(203, 170, 162) }
```


If only the border color should be changed use the property `border-color`.

```
.border{ border-color:rgb(203, 170, 162) }
```

If you want to add a box shadow in that color use:

Here you see how a box with a 4 pixel `rgb(203, 170, 162)` colored shadow looks like.

```
.boxshadow{ -moz-box-shadow:4px 4px 4px  
4px rgb(203, 170, 162); -webkit-box-  
shadow:4px 4px 4px 4px rgb(203, 170, 162);  
box-shadow:4px 4px 4px 4px rgb(203, 170,  
162) }
```

Background

The CSS property to change the background color of an element to YIQ 178.9550, 22.2360, 4.5080 is called "background". The background property can be set on classes, ids or directly on the HTML element.

```
.background, #background, body{  
background: rgb(203, 170, 162) }
```

If only the background color should be changed can be used:

```
.background{ background-color: rgb(203,  
170, 162) }
```

This example shows the color as background, it is applied via the CSS property "background".

To optimize and compress your CSS code, you can use our [online CSS compressor and optimizer](#) based on csstidy. If you want to create a linear or radial gradient as background or border, check our [CSS Gradient Generator](#).

Hey! You found this booklet interesting? Support Converting Colors with the new Membership Option!

The pro membership hides all ads, plus gives you double the colors in the color bucket, and more awesome pro features!

[Learn more, Memberships starting at \\$2.50/m!](#)

**Follow me
on Twitter!**

@ConvertingColor