

Converting Colors

YIQ(179.1270, 16.0000, 7.3920)

Have a look what the booklet for
YIQ(179.1270, 16.0000, 7.3920)
contains.

YIQ(179.1270, 16.0000, 7.3920)	3
<i>Conversions</i>	4
<i>Details</i>	6
<i>Harmonies</i>	12
<i>Previews</i>	24
<i>Color Blindness Simulation</i>	28
<i>CSS Examples</i>	31

Color

**YIQ(179.1270, 16.0000,
7.3920)**

Conversions

Conversions Part 1

Format	Color
Hex	C7AAAE
RGB	199, 170, 174
RGB Percent	78%, 67%, 68%
CMY	0.2195, 0.3334, 0.3176
CMYK	0.00, 0.15, 0.13, 0.22
HSL	352°, 21%, 72%
HSV	352°, 15%, 78%
XYZ	45.5720, 43.9461, 46.1328
YIQ	179.1270, 16.0000, 7.3920

Conversions

Conversions Part 2

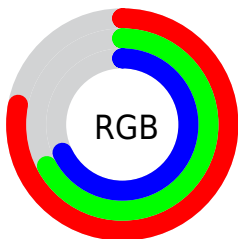
Format	Color
R _Y B	199, 170, 174
Decimal	13085358
CIE Lab	72.19, 11.20, 1.84
CIE LCh	72, 11.352, 9.333
Yxy	43.9461, 0.3360, 0.3240
Android (android.graphics.Color)	4291275438 (0xFFC7AAAE)
YUV	179.1270, -2.5276, 17.4286
Hunter-Lab	66.2918, 6.6981, 5.1441

Details

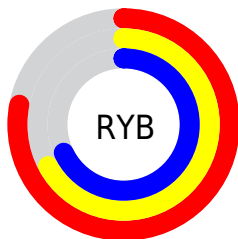
The YIQ color **179.1270, 16.0000, 7.3920** is a light color, and the websafe version is hex **CC9999**. A complement of this color would be **189.8730, -16.0000, -7.3920**, and the grayscale version is **179.0000, -0.0000, -0.0000**.

A 20% lighter version of the original color is **234.4260, 16.5960, 7.6040**, and **126.5290, 14.8080, 6.9680** is the 20% darker color. If you saturate the color by 10%, you get **165.4490, 26.9570, 12.5650**, and if you desaturate by 10%, it is **192.8050, 5.0430, 2.2190**.

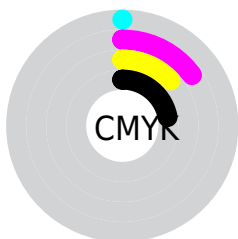
Distribution



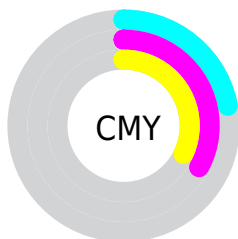
- Red (78%)
- Green (67%)
- Blue (68%)



- Red (78%)
- Yellow (67%)
- Blue (68%)



- Cyan (0%)
- Magenta (15%)
- Yellow (13%)
- Black (22%)



- Cyan (22%)
- Magenta (33%)
- Yellow (32%)

Brightness & Saturation Gradients

These gradients show how the YIQ color 179.1270, 16.0000, 7.3920 changes by changing the brightness by 10 percent. The first figure shows a shift by +10% for each color and the second figure -10%.

Similar to the brightness gradients but the following saturation gradients show a change of the YIQ color 179.1270, 16.0000, 7.3920 by changing the saturation by 10% instead.

■ 179.1270, 16.0000,
7.3920

■ 179.1270, 16.0000,
7.3920

255.0000, -0.0000,
-0.0000

■ 152.1270, 16.0000,
7.3920

■ 234.4260, 16.5960,
7.6040

■ 126.5290, 14.8080,
6.9680

254.4130, 0.2750,
0.5230

■ 101.2300, 14.2120,
6.7560

■ 76.9310, 13.6160,
6.5440

■ 54.3330, 12.4240,
6.1200

■ 32.7350, 11.2320,
5.6960

■ 8.8280, 15.4040,

7.1800

■ 0.0000, 0.0000,
0.0000

■ 179.1270, 16.0000,
7.3920

■ 179.1270, 16.0000,
7.3920

■ 165.4490, 26.9570,
12.5650

■ 192.8050, 5.0430,
2.2190

■ 151.7710, 37.9140,
17.7380

■ 206.4830, -5.9140,
-2.9540

■ 138.0930, 48.8710,
22.9110

■ 220.1610,
-16.8710, -8.1270

■ 124.3010, 60.1490,
27.7730

■ 233.9530,
-28.1490, -12.9890

■ 110.6230, 71.1060,
32.9460

■ 238.2560,
-33.3760, -11.8720

■ 97.5320, 81.7880,
37.5960

■ 83.8540, 92.7450,
42.7690

■ 70.1760, 103.7020,
47.9420

■ 62.6930, 109.6160,
50.8960

Harmonies

Analogous

The Analogous color harmony consists of three colors that are next to each other on the color wheel.



179.4730, 9.2140, 9.2300



179.1270, 16.0000, 7.3920



178.2750, 18.3390, 3.5470

Triad

The Triadic color harmony groups three colors that are evenly spaced from another and form a triangle on the color wheel.



179.1270, 16.0000, 7.3920



174.8440, 0.1390, -8.0290



175.2460, -18.2480, 0.3120

Complementary

The Complementary color scheme is a pair of colors which are on the opposite of each other on the color wheel.



179.1270, 16.0000, 7.3920



189.8730, -16.0000, -7.3920

Split Complementary

Split-complementary colors differ from the complementary color scheme. The scheme consists of three colors, the original color and two neighbors of the complement color.



173.9420, -20.4480, -3.8720



179.1270, 16.0000, 7.3920



174.2280, -9.8100, -9.4420

Square

The Square scheme is like the rectangle color scheme, but the four colors are evenly spaced on the color wheel.



179.1270, 16.0000, 7.3920



176.2150, 9.4000, -5.1600



173.3890, -17.5130, -7.5050



177.1870, -10.5920, 4.7360

Rectangle

The Rectangle color scheme consists of four colors that form a rectangle on the color wheel.



179.1270, 16.0000, 7.3920



178.0960, 17.2850, 0.6210



173.3890, -17.5130, -7.5050



174.7080, -19.6690, -1.4690

Sweetspot

The Sweet Spot groups the original color and five complimentary colors.



179.1270, 16.0000, 7.3920



248.1040, 5.6390, 2.4310



180.7810, 5.5910, 14.3190



123.2070, 3.8510, 1.7950



0.0000, 0.0000, 0.0000



128.0000, -0.0000, -0.0000

Same Dimension

The Same Dimension uses a secret algorithm to generate beautiful new colors.



179.1270, 16.0000, 7.3920



223.4380, 25.4900, 11.6180



184.5410, 14.5340, 0.9180



92.8050, 5.0430, 2.2190



51.3590, 89.7650, 41.7090



11.3340, 19.8510, 9.1870

Inverse Universe

The Inverse Universe completely reimagines the original color for something new.



179.1270, 16.0000, 7.3920



223.4380, 25.4900, 11.6180



184.4590, -14.5340, -0.9180



92.8050, 5.0430, 2.2190



51.3590, 89.7650, 41.7090



11.3340, 19.8510, 9.1870

Previews

White Background



This preview shows how the YIQ color 179.1270, 16.0000, 7.3920 looks on a white background.

Color Contrast Check

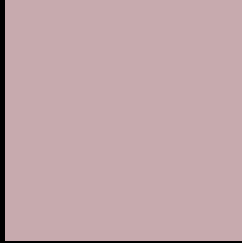
Large Text (above 18pt) WCAG AA × Fail

Any Text WCAG AA × Fail

Large Text (above 18pt) WCAG AAA × Fail

Any Text WCAG AAA × Fail

Black Background



This preview shows how the YIQ color 179.1270, 16.0000, 7.3920 looks on a black background.

Color Contrast Check

Large Text (above 18pt) WCAG AA ✓ Pass

Any Text WCAG AA ✓ Pass

Large Text (above 18pt) WCAG AAA ✓ Pass

Any Text WCAG AAA ✓ Pass

If you want to check with other color combinations, try the [Color Contrast Checker](#).

YIQ 179.1270, 16.0000, 7.3920

Background



This preview shows how black text looks on a background with the YIQ color 179.1270, 16.0000, 7.3920.



This preview shows how white text looks on a background with the YIQ color 179.1270, 16.0000,

Color Blindness Simulation

Color vision deficiency is a very complex topic, and I could not describe the different causes any better than Wikipedia does, so if you want to learn more, you should check out their [article about color blindness](#).

Dichromacy



Original Color

179.1270, 16.0000, 7.3920

Protanopia

177.4240, 1.7420, 1.4700

Deuteranopia

178.5180, 13.3410, 6.0210



Tritanopia

179.7510, 14.3030, 10.6150

Trichromacy



Original Color

179.1270, 16.0000, 7.3920

Protanomaly

178.2290, 6.7850, 3.6890

Deuteranomaly

178.8170, 13.9370, 6.2330

Tritanomaly

179.4090, 15.2660, 9.6820

Monochromacy



Original Color

179.1270, 16.0000, 7.3920

Achromatopsia

179.0000, -0.0000, -0.0000

Achromatomaly

179.1040, 5.6390, 2.4310

CSS Examples

Text

The CSS property to change the color of the text to YIQ 179.1270, 16.0000, 7.3920 is called "color". The color property can be set on classes, ids or directly on the HTML element.

This example shows how text in the color `rgb(199, 170, 174)` looks like.

```
.text, #text, p{  
    color:rgb(199, 170, 174)  
}
```

If you want to add a text shadow in that color use the text-shadow property, you can generate a text shadow directly with our [CSS Text Shadow Generator](#).

Here you see how black text with a 4 pixel rgb(199, 170, 174) colored shadow looks like.

```
.shadow{ text-shadow: 4px 4px 2px rgb(199, 170, 174) }
```

Border

The CSS property to change the border of an element to YIQ 179.1270, 16.0000, 7.3920 is called "border". The border property can be set on classes, ids or directly on the HTML element.

This example shows the color as border, it can be applied via the CSS property "border" or "border-color".

```
.border, #border, table{ border:4px solid rgb(199, 170, 174) }
```


If only the border color should be changed use the property `border-color`.

```
.border{ border-color:rgb(199, 170, 174) }
```

If you want to add a box shadow in that color use:

Here you see how a box with a 4 pixel `rgb(199, 170, 174)` colored shadow looks like.

```
.boxshadow{ -moz-box-shadow:4px 4px 4px  
4px rgb(199, 170, 174); -webkit-box-  
shadow:4px 4px 4px 4px rgb(199, 170, 174);  
box-shadow:4px 4px 4px 4px rgb(199, 170,  
174) }
```

Background

The CSS property to change the background color of an element to YIQ 179.1270, 16.0000, 7.3920 is called "background". The background property can be set on classes, ids or directly on the HTML element.

```
.background, #background, body{  
background: rgb(199, 170, 174) }
```

If only the background color should be changed can be used:

```
.background{ background-color: rgb(199,  
170, 174) }
```

This example shows the color as background, it is applied via the CSS property "background".

To optimize and compress your CSS code, you can use our [online CSS compressor and optimizer](#) based on csstidy. If you want to create a linear or radial gradient as background or border, check our [CSS Gradient Generator](#).

Hey! You found this booklet interesting? Support Converting Colors with the new Membership Option!

The pro membership hides all ads, plus gives you double the colors in the color bucket, and more awesome pro features!

[Learn more, Memberships starting at \\$2.50/m!](#)

**Follow me
on Twitter!**

@ConvertingColor