

Converting Colors

YIQ(179.1330, 15.8630, 4.3670)

Have a look what the booklet for
YIQ(179.1330, 15.8630, 4.3670)
contains.

YIQ(179.1330, 15.8630, 4.3670)	3
<i>Conversions</i>	4
<i>Details</i>	6
<i>Harmonies</i>	12
<i>Previews</i>	24
<i>Color Blindness Simulation</i>	28
<i>CSS Examples</i>	31

Color

**YIQ(179.1330, 15.8630,
4.3670)**

Conversions

Conversions Part 1

Format	Color
Hex	C5ACA9
RGB	197, 172, 169
RGB Percent	77%, 67%, 66%
CMY	0.2274, 0.3255, 0.3372
CMYK	0.00, 0.13, 0.14, 0.23
HSL	6°, 19%, 72%
HSV	6°, 14%, 77%
XYZ	44.9433, 44.2385, 43.7144
YIQ	179.1330, 15.8630, 4.3670

Conversions

Conversions Part 2

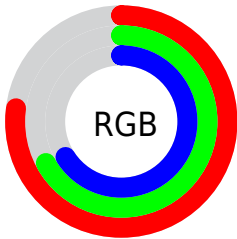
Format	Color
R _Y B	197, 172, 169
Decimal	12954793
CIE Lab	72.39, 8.55, 4.85
CIE LCh	72, 9.832, 29.554
Yxy	44.2385, 0.3382, 0.3329
Android (android.graphics.Color)	4291144873 (0xFFC5ACA9)
YUV	179.1330, -4.9956, 15.6694
Hunter-Lab	66.5121, 4.2194, 7.5906

Details

The YIQ color **179.1330, 15.8630, 4.3670** is a light color, and the websafe version is hex **CC9999**. A complement of this color would be **186.8670, -15.8630, -4.3670**, and the grayscale version is **179.0000, -0.0000, -0.0000**.

A 20% lighter version of the original color is **234.7310, 17.0550, 4.7910**, and **126.5350, 14.6710, 3.9430** is the 20% darker color. If you saturate the color by 10%, you get **166.2870, 27.2330, 7.5610**, and if you desaturate by 10%, it is **191.9790, 4.4930, 1.1730**.

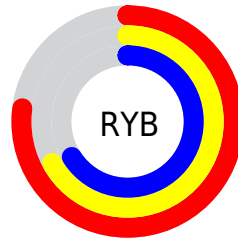
Distribution



Red (77%)

Green (67%)

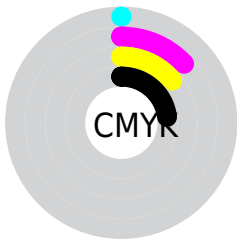
Blue (66%)



Red (77%)

Yellow (67%)

Blue (66%)

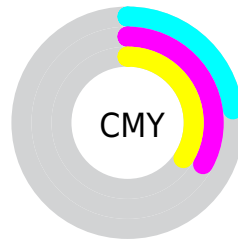


Cyan (0%)

Magenta (13%)

Yellow (14%)

Black (23%)



Cyan (23%)

Magenta (33%)

Yellow (34%)

Brightness & Saturation Gradients

These gradients show how the YIQ color 179.1330, 15.8630, 4.3670 changes by changing the brightness by 10 percent. The first figure shows a shift by +10% for each color and the second figure -10%.

Similar to the brightness gradients but the following saturation gradients show a change of the YIQ color 179.1330, 15.8630, 4.3670 by changing the saturation by 10% instead.

■ 179.1330, 15.8630,
4.3670

■ 179.1330, 15.8630,
4.3670

■ 255.0000, -0.0000,
-0.0000

■ 152.2470, 15.5420,
4.6780

■ 234.7310, 17.0550,
4.7910

■ 126.5350, 14.6710,
3.9430

■ 254.7720, 0.6420,
-0.6220

■ 101.2360, 14.0750,
3.7310

■ 77.0510, 13.1580,
3.8300

■ 54.4530, 11.9660,
3.4060

■ 33.1540, 11.3700,
3.1940

■ 9.2470, 15.5420,

4.6780

0.0000, 0.0000,
0.0000

179.1330, 15.8630,
4.3670

179.1330, 15.8630,
4.3670

166.2870, 27.2330,
7.5610

191.9790, 4.4930,
1.1730

154.1420, 38.0070,
10.5430

204.1240, -6.2810,
-1.8090

141.2960, 49.3770,
13.7370

216.9700,
-17.6510, -5.0030

129.0370, 60.4720,
16.4080

229.2290,
-28.7460, -7.6740

116.3050, 71.5210,
19.9130

237.6580,
-34.5680, -12.2960

■ 103.4590, 82.8910,
23.1070

■ 91.2000, 93.9860,
25.7780

■ 78.3540, 105.3560,
28.9720

■ 71.2300, 111.6370,
30.7810

Harmonies

Analogous

The Analogous color harmony consists of three colors that are next to each other on the color wheel.



179.8600, 12.3780, 6.9540



179.1330, 15.8630, 4.3670



178.3130, 15.1760, 0.2960

Triad

The Triadic color harmony groups three colors that are evenly spaced from another and form a triangle on the color wheel.



179.1330, 15.8630, 4.3670



175.3210, -5.6380, -7.9580



176.9480, -11.4170, 3.1670

Complementary

The Complementary color scheme is a pair of colors which are on the opposite of each other on the color wheel.



179.1330, 15.8630, 4.3670



186.8670, -15.8630, -4.3670

Split Complementary

Split-complementary colors differ from the complementary color scheme. The scheme consists of three colors, the original color and two neighbors of the complement color.



175.7900, -16.9640, -0.9320



179.1330, 15.8630, 4.3670



174.8410, -12.9740, -7.1660

Square

The Square scheme is like the rectangle color scheme, but the four colors are evenly spaced on the color wheel.



179.1330, 15.8630, 4.3670



176.4530, 2.7980, -6.6580



174.9700, -17.6510, -5.0030



178.2480, -3.3940, 6.4460

Rectangle

The Rectangle color scheme consists of four colors that form a rectangle on the color wheel.



179.1330, 15.8630, 4.3670



177.7640, 12.2880, -2.4320



174.9700, -17.6510, -5.0030



176.6380, -13.4800, 2.0080

Sweetspot

The Sweet Spot groups the original color and five complimentary colors.



179.1330, 15.8630, 4.3670



248.5770, 5.6850, 1.5970



180.2220, 8.6630, 13.7110



123.6800, 3.8970, 0.9610



0.0000, 0.0000, 0.0000



128.0000, -0.0000, -0.0000

Same Dimension

The Same Dimension uses a secret algorithm to generate beautiful new colors.



179.1330, 15.8630, 4.3670



227.2050, 24.5280, 7.0240



187.3510, 12.0130, -2.9550



93.2780, 5.0890, 1.3850



58.7160, 92.4730, 25.6650



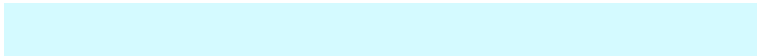
13.1120, 20.3560, 5.5400

Inverse Universe

The Inverse Universe completely reimagines the original color for something new.



186.8670, -15.8630, -4.3670



239.2080, -24.2530, -6.5010



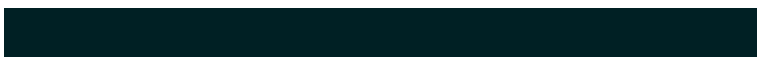
178.6490, -12.0130, 2.9550



95.7220, -5.0890, -1.3850



104.2840, -92.4730, -25.6650



22.8880, -20.3560, -5.5400

Previews

White Background



This preview shows how the YIQ color 179.1330, 15.8630, 4.3670 looks on a white background.

Color Contrast Check

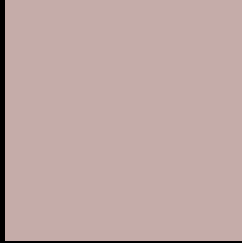
Large Text (above 18pt) WCAG AA × Fail

Any Text WCAG AA × Fail

Large Text (above 18pt) WCAG AAA × Fail

Any Text WCAG AAA × Fail

Black Background



This preview shows how the YIQ color 179.1330, 15.8630, 4.3670 looks on a black background.

Color Contrast Check

Large Text (above 18pt) WCAG AA ✓ Pass

Any Text WCAG AA ✓ Pass

Large Text (above 18pt) WCAG AAA ✓ Pass

Any Text WCAG AAA ✓ Pass

If you want to check with other color combinations, try the [Color Contrast Checker](#).

YIQ 179.1330, 15.8630, 4.3670

Background



This preview shows how black text looks on a background with the YIQ color 179.1330, 15.8630, 4.3670.



This preview shows how white text looks on a background with the YIQ color 179.1330, 15.8630,

4.3670.

Color Blindness Simulation

Color vision deficiency is a very complex topic, and I could not describe the different causes any better than Wikipedia does, so if you want to learn more, you should check out their [article about color blindness](#).

Dichromacy



Original Color

179.1330, 15.8630, 4.3670

Protanopia

177.9250, 4.5850, -0.4950

Deuteranopia

179.4320, 16.4590, 4.5790



Tritanopia

180.1530, 13.1110, 10.1910

Trichromacy



Original Color

179.1330, 15.8630, 4.3670

Protanomaly

178.1320, 8.4360, 1.3000

Deuteranomaly

179.4320, 16.4590, 4.5790

Tritanomaly

179.8710, 13.8450, 7.9010

Monochromacy



Original Color

179.1330, 15.8630, 4.3670

Achromatopsia

179.0000, -0.0000, -0.0000

Achromatomaly

178.8760, 6.2810, 1.8090

CSS Examples

Text

The CSS property to change the color of the text to YIQ 179.1330, 15.8630, 4.3670 is called "color". The color property can be set on classes, ids or directly on the HTML element.

This example shows how text in the color `rgb(197, 172, 169)` looks like.

```
.text, #text, p{  
    color:rgb(197, 172, 169)  
}
```

If you want to add a text shadow in that color use the text-shadow property, you can generate a text shadow directly with our [CSS Text Shadow Generator](#).

Here you see how black text with a 4 pixel rgb(197, 172, 169) colored shadow looks like.

```
.shadow{ text-shadow: 4px 4px 2px rgb(197, 172, 169) }
```

Border

The CSS property to change the border of an element to YIQ 179.1330, 15.8630, 4.3670 is called "border". The border property can be set on classes, ids or directly on the HTML element.

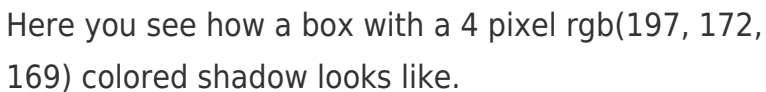
This example shows the color as border, it can be applied via the CSS property "border" or "border-color".

```
.border, #border, table{ border:4px solid rgb(197, 172, 169) }
```


If only the border color should be changed use the property `border-color`.

```
.border{ border-color:rgb(197, 172, 169) }
```

If you want to add a box shadow in that color use:



Here you see how a box with a 4 pixel `rgb(197, 172, 169)` colored shadow looks like.

```
.boxshadow{ -moz-box-shadow:4px 4px 4px  
4px rgb(197, 172, 169); -webkit-box-  
shadow:4px 4px 4px 4px rgb(197, 172, 169);  
box-shadow:4px 4px 4px 4px rgb(197, 172,  
169) }
```

Background

The CSS property to change the background color of an element to YIQ 179.1330, 15.8630, 4.3670 is called "background". The background property can be set on classes, ids or directly on the HTML element.

```
.background, #background, body{  
background: rgb(197, 172, 169) }
```

If only the background color should be changed can be used:

```
.background{ background-color: rgb(197,  
172, 169) }
```

This example shows the color as background, it is applied via the CSS property "background".

To optimize and compress your CSS code, you can use our [online CSS compressor and optimizer](#) based on csstidy. If you want to create a linear or radial gradient as background or border, check our [CSS Gradient Generator](#).

Hey! You found this booklet interesting? Support Converting Colors with the new Membership Option!

The pro membership hides all ads, plus gives you double the colors in the color bucket, and more awesome pro features!

[Learn more, Memberships starting at \\$2.50/m!](#)

**Follow me
on Twitter!**

@ConvertingColor