

Converting Colors

YIQ(179.2630, 35.8080, 0.8320)

Have a look what the booklet for
YIQ(179.2630, 35.8080, 0.8320)
contains.

YIQ(179.2630, 35.8080, 0.8320)	3
<i>Conversions</i>	4
<i>Details</i>	6
<i>Harmonies</i>	12
<i>Previews</i>	24
<i>Color Blindness Simulation</i>	28
<i>CSS Examples</i>	31

Color

**YIQ(179.2630, 35.8080,
0.8320)**

Conversions

Conversions Part 1

Format	Color
Hex	D6A98D
RGB	214, 169, 141
RGB Percent	84%, 66%, 55%
CMY	0.1607, 0.3373, 0.4469
CMYK	0.00, 0.21, 0.34, 0.16
HSL	23°, 47%, 70%
HSV	23°, 34%, 84%
XYZ	46.7335, 44.5928, 31.3597
YIQ	179.2630, 35.8080, 0.8320

Conversions

Conversions Part 2

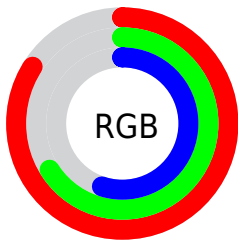
Format	Color
R _Y B	214, 186, 141
Decimal	14068109
CIE Lab	72.62, 12.64, 20.72
CIE LCh	73, 24.272, 58.607
Yxy	44.5928, 0.3809, 0.3635
Android (android.graphics.Color)	4292258189 (0xFFD6A98D)
YUV	179.2630, -18.8637, 30.4643
Hunter-Lab	66.7778, 8.0594, 18.9011

Details

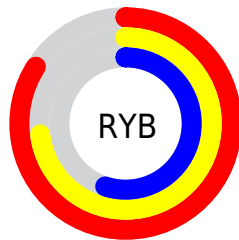
The YIQ color $179.2630, 35.8080, 0.8320$ is a light color, and the websafe version is hex $CC9966$. A complement of this color would be $175.7370, -35.8080, -0.8320$, and the grayscale version is $179.0000, -0.0000, -0.0000$.

A 20% lighter version of the original color is $229.9630, 27.7850, -2.4470$, and $126.2950, 32.7820, 0.6060$ is the 20% darker color. If you saturate the color by 10%, you get $169.2380, 46.1240, 1.1000$, and if you desaturate by 10%, it is $189.2880, 25.4920, 0.5640$.

Distribution



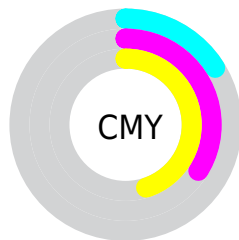
- Red (84%)
- Green (66%)
- Blue (55%)



- Red (84%)
- Yellow (73%)
- Blue (55%)



- Cyan (0%)
- Magenta (21%)
- Yellow (34%)
- Black (16%)



- Cyan (16%)
- Magenta (34%)
- Yellow (45%)

Brightness & Saturation Gradients

These gradients show how the YIQ color 179.2630, 35.8080, 0.8320 changes by changing the brightness by 10 percent. The first figure shows a shift by +10% for each color and the second figure -10%.

Similar to the brightness gradients but the following saturation gradients show a change of the YIQ color 179.2630, 35.8080, 0.8320 by changing the saturation by 10% instead.

■ 179.2630, 35.8080,
0.8320

■ 179.2630, 35.8080,
0.8320

255.0000, -0.0000,
-0.0000

■ 152.0780, 34.8910,
0.9310

■ 229.9630, 27.7850,
-2.4470

■ 126.2950, 32.7820,
0.6060

■ 250.1780, 10.8220,
-8.9060

■ 100.8110, 31.2690,
0.4930

■ 254.5440, 1.2840,
-1.2440

■ 77.0280, 29.1600,
0.1680

■ 53.2450, 27.0510,
-0.1570

■ 31.1200, 25.9050,
-1.4150

■ 9.5680, 19.0720,

6.7840

■ 0.0000, 0.0000,
0.0000

■ 179.2630, 35.8080,
0.8320

■ 179.2630, 35.8080,
0.8320

■ 169.2380, 46.1240,
1.1000

■ 189.2880, 25.4920,
0.5640

■ 159.0990, 56.7610,
1.0570

■ 199.4270, 14.8550,
0.6070

■ 148.4870, 67.3520,
1.8480

■ 210.0390, 4.2640,
-0.1840

■ 138.3480, 77.9890,
1.8050

■ 220.1780, -6.3730,
-0.1410

■ 128.3230, 88.3050,
2.0730

■ 230.2030,
-16.6890, -0.4090

■ 118.2980, 98.6210,
2.3410

■ 238.6320,
-22.5110, -5.0310

■ 112.1200,
104.9940, 2.4820

■ 242.7410,
-24.4360, -8.6920

Harmonies

Analogous

The Analogous color harmony consists of three colors that are next to each other on the color wheel.



180.9570, 37.0900, 10.6420



179.2630, 35.8080, 0.8320



177.1920, 25.4020, -8.8220

Triad

The Triadic color harmony groups three colors that are evenly spaced from another and form a triangle on the color wheel.



179.2630, 35.8080, 0.8320



169.2570, -35.1170, -18.8690



180.1090, -9.9520, 15.1680

Complementary

The Complementary color scheme is a pair of colors which are on the opposite of each other on the color wheel.



179.2630, 35.8080, 0.8320



175.7370, -35.8080, -0.8320

Split Complementary

Split-complementary colors differ from the complementary color scheme. The scheme consists of three colors, the original color and two neighbors of the complement color.



175.8180, -31.3620, 6.7020



179.2630, 35.8080, 0.8320



168.3020, -48.1850, -13.3130

Square

The Square scheme is like the rectangle color scheme, but the four colors are evenly spaced on the color wheel.



179.2630, 35.8080, 0.8320



171.5660, -14.1180, -19.4780



171.3550, -46.5360, -4.6480



182.0640, 12.2840, 19.6760

Rectangle

The Rectangle color scheme consists of four colors that form a rectangle on the color wheel.



179.2630, 35.8080, 0.8320



175.5710, 13.8490, -14.2070



171.3550, -46.5360, -4.6480



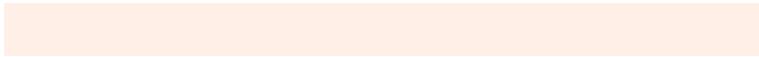
178.6350, -17.4250, 12.9350

Sweetspot

The Sweet Spot groups the original color and five complimentary colors.



179.2630, 35.8080, 0.8320



242.7580, 12.4250, 0.5930



168.0710, 28.7420, 29.7820



120.3060, 7.8860, 0.2540



0.0000, 0.0000, 0.0000



128.0000, -0.0000, -0.0000

Same Dimension

The Same Dimension uses a secret algorithm to generate beautiful new colors.



179.2630, 35.8080, 0.8320



204.8750, 51.5800, 1.3400



199.8080, 26.1830, -17.4730



101.6370, 5.4560, 0.2400



89.2840, 84.0410, 2.2570



22.8360, 20.9530, 0.2250

Inverse Universe

The Inverse Universe completely reimagines the original color for something new.



175.7370, -35.8080, -0.8320



200.1250, -51.5800, -1.3400



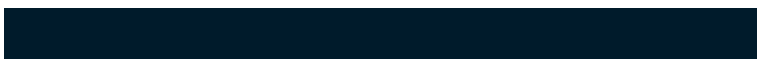
155.1920, -26.1830, 17.4730



101.3630, -5.4560, -0.2400



81.1290, -83.7660, -1.7340



20.7510, -21.2280, -0.7480

Previews

White Background



This preview shows how the YIQ color 179.2630, 35.8080, 0.8320 looks on a white background.

Color Contrast Check

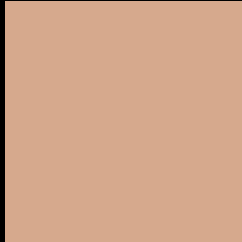
Large Text (above 18pt) WCAG AA × Fail

Any Text WCAG AA × Fail

Large Text (above 18pt) WCAG AAA × Fail

Any Text WCAG AAA × Fail

Black Background



This preview shows how the YIQ color 179.2630, 35.8080, 0.8320 looks on a black background.

Color Contrast Check

Large Text (above 18pt) WCAG AA ✓ Pass

Any Text WCAG AA ✓ Pass

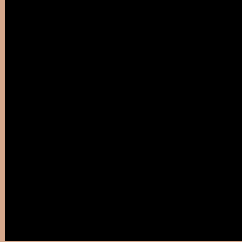
Large Text (above 18pt) WCAG AAA ✓ Pass

Any Text WCAG AAA ✓ Pass

If you want to check with other color combinations, try the [Color Contrast Checker](#).

YIQ 179.2630, 35.8080, 0.8320

Background



This preview shows how black text looks on a background with the YIQ color 179.2630, 35.8080, 0.8320.



This preview shows how white text looks on a background with the YIQ color 179.2630, 35.8080,

0.8320.

Color Blindness Simulation

Color vision deficiency is a very complex topic, and I could not describe the different causes any better than Wikipedia does, so if you want to learn more, you should check out their [article about color blindness](#).

Dichromacy



Original Color

179.2630, 35.8080, 0.8320

Protanopia

177.5270, 17.1490, -7.9310

Deuteranopia

178.6430, 31.6820, -1.4860



Tritanopia

181.6280, 28.0110, 15.4910

Trichromacy



Original Color

179.2630, 35.8080, 0.8320

Protanomaly

178.3430, 23.6590, -4.7650

Deuteranomaly

178.6540, 33.1490, -0.5390

Tritanomaly

181.0210, 31.0380, 10.1900

Monochromacy



Original Color

179.2630, 35.8080, 0.8320

Achromatopsia

179.0000, -0.0000, -0.0000

Achromatomaly

178.9430, 13.3420, 0.4940

CSS Examples

Text

The CSS property to change the color of the text to YIQ 179.2630, 35.8080, 0.8320 is called "color". The color property can be set on classes, ids or directly on the HTML element.

This example shows how text in the color `rgb(214, 169, 141)` looks like.

```
.text, #text, p{  
    color:rgb(214, 169, 141)  
}
```

If you want to add a text shadow in that color use the text-shadow property, you can generate a text shadow directly with our [CSS Text Shadow Generator](#).

Here you see how black text with a 4 pixel rgb(214, 169, 141) colored shadow looks like.

```
.shadow{ text-shadow: 4px 4px 2px rgb(214, 169, 141) }
```

Border

The CSS property to change the border of an element to YIQ 179.2630, 35.8080, 0.8320 is called "border". The border property can be set on classes, ids or directly on the HTML element.

This example shows the color as border, it can be applied via the CSS property "border" or "border-color".

```
.border, #border, table{ border:4px solid rgb(214, 169, 141) }
```


If only the border color should be changed use the property `border-color`.

```
.border{ border-color:rgb(214, 169, 141) }
```

If you want to add a box shadow in that color use:

Here you see how a box with a 4 pixel `rgb(214, 169, 141)` colored shadow looks like.

```
.boxshadow{ -moz-box-shadow:4px 4px 4px  
4px rgb(214, 169, 141); -webkit-box-  
shadow:4px 4px 4px 4px rgb(214, 169, 141);  
box-shadow:4px 4px 4px 4px rgb(214, 169,  
141) }
```

Background

The CSS property to change the background color of an element to YIQ 179.2630, 35.8080, 0.8320 is called "background". The background property can be set on classes, ids or directly on the HTML element.

```
.background, #background, body{  
background: rgb(214, 169, 141) }
```

If only the background color should be changed can be used:

```
.background{ background-color: rgb(214,  
169, 141) }
```

This example shows the color as background, it is applied via the CSS property "background".

To optimize and compress your CSS code, you can use our [online CSS compressor and optimizer](#) based on csstidy. If you want to create a linear or radial gradient as background or border, check our [CSS Gradient Generator](#).

Hey! You found this booklet interesting? Support Converting Colors with the new Membership Option!

The pro membership hides all ads, plus gives you double the colors in the color bucket, and more awesome pro features!

[Learn more, Memberships starting at \\$2.50/m!](#)

**Follow me
on Twitter!**

@ConvertingColor