

Converting Colors

YIQ(179.5580, 34.2000, 18.9680)

Have a look what the booklet for
YIQ(179.5580, 34.2000, 18.9680)
contains.

YIQ(179.5580, 34.2000, 18.9680)	3
<i>Conversions</i>	4
<i>Details</i>	6
<i>Harmonies</i>	12
<i>Previews</i>	24
<i>Color Blindness Simulation</i>	28
<i>CSS Examples</i>	31

Color

**YIQ(179.5580, 34.2000,
18.9680)**

Conversions

Conversions Part 1

Format	Color
Hex	E09EAE
RGB	224, 158, 174
RGB Percent	88%, 62%, 68%
CMY	0.1214, 0.3805, 0.3175
CMYK	0.00, 0.29, 0.22, 0.12
HSL	345°, 52%, 75%
HSV	345°, 29%, 88%
XYZ	50.6189, 43.3556, 45.7610
YIQ	179.5580, 34.2000, 18.9680

Conversions

Conversions Part 2

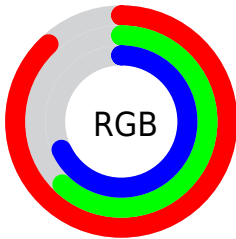
Format	Color
R_{YB}	224, 158, 174
Decimal	14720686
CIE _{Lab}	71.80, 26.86, 1.56
CIE _{LCh}	72, 26.902, 3.327
Yxy	43.3556, 0.3622, 0.3103
Android (android.graphics.Color)	4292910766 (0xFFE09EAE)
YUV	179.5580, -2.7401, 38.9756
Hunter-Lab	65.8450, 21.9947, 4.8860

Details

The YIQ color **179.5580, 34.2000, 18.9680** is a light color, and the websafe version is hex **CC9999**. A complement of this color would be **202.4420, -34.2000, -18.9680**, and the grayscale version is **180.0000, -0.0000, -0.0000**.

A 20% lighter version of the original color is **227.3820, 19.8960, 13.8800**, and **126.3620, 31.8160, 18.1200** is the 20% darker color. If you saturate the color by 10%, you get **164.7060, 45.7070, 25.1870**, and if you desaturate by 10%, it is **194.4100, 22.6930, 12.7490**.

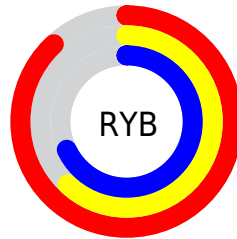
Distribution



Red (88%)

Green (62%)

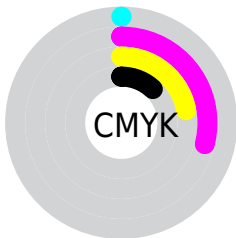
Blue (68%)



Red (88%)

Yellow (62%)

Blue (68%)

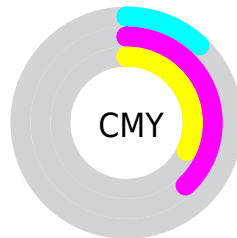


Cyan (0%)

Magenta (29%)

Yellow (22%)

Black (12%)



Cyan (12%)

Magenta (38%)

Yellow (32%)

Brightness & Saturation Gradients

These gradients show how the YIQ color 179.5580, 34.2000, 18.9680 changes by changing the brightness by 10 percent. The first figure shows a shift by +10% for each color and the second figure -10%.

Similar to the brightness gradients but the following saturation gradients show a change of the YIQ color 179.5580, 34.2000, 18.9680 by changing the saturation by 10% instead.

■ 179.5580, 34.2000,
18.9680

■ 179.5580, 34.2000,
18.9680

255.0000, -0.0000,
-0.0000

■ 152.8460, 33.3290,
18.2330

■ 227.3820, 19.8960,
13.8800

■ 126.3620, 31.8160,
18.1200

■ 247.3690, 3.5750,
6.7990

■ 100.4650, 30.0280,
17.4840

■ 75.8670, 28.8360,
17.0600

■ 52.0840, 26.7270,
16.7350

■ 28.1270, 25.1680,
17.4560

■ 13.3130, 24.3440,

10.3600

■ 0.0000, 0.0000,
0.0000

■ 179.5580, 34.2000,
18.9680

■ 179.5580, 34.2000,
18.9680

■ 164.7060, 45.7070,
25.1870

■ 194.4100, 22.6930,
12.7490

■ 149.2670, 57.4890,
31.9290

■ 209.8490, 10.9110,
6.0070

■ 134.4150, 68.9960,
38.1480

■ 224.7010, -0.5960,
-0.2120

■ 118.9760, 80.7780,
44.8900

■ 240.1400,
-12.3780, -6.9540

■ 104.1240, 92.2850,
51.1090

■ 245.7310,
-18.4760, -6.5720

■ 89.2720, 103.7920,
57.3280

■ 73.8330, 115.5740,
64.0700

■ 73.1320, 116.1700,
64.2820

Harmonies

Analogous

The Analogous color harmony consists of three colors that are next to each other on the color wheel.



179.8690, 17.3270, 21.8950



179.5580, 34.2000, 18.9680



177.9960, 41.3540, 10.4580

Triad

The Triadic color harmony groups three colors that are evenly spaced from another and form a triangle on the color wheel.



179.5580, 34.2000, 18.9680



171.7330, 4.4050, -19.2670



167.9570, -51.1670, -3.3190

Complementary

The Complementary color scheme is a pair of colors which are on the opposite of each other on the color wheel.



179.5580, 34.2000, 18.9680



202.4420, -34.2000, -18.9680

Split Complementary

Split-complementary colors differ from the complementary color scheme. The scheme consists of three colors, the original color and two neighbors of the complement color.



164.4690, -56.0250, -14.4010



179.5580, 34.2000, 18.9680



168.4620, -19.7570, -21.9090

Square

The Square scheme is like the rectangle color scheme, but the four colors are evenly spaced on the color wheel.



179.5580, 34.2000, 18.9680



174.3120, 24.9440, -11.5360



165.3100, -42.6360, -20.2680



174.1000, -32.0960, 8.9920

Rectangle

The Rectangle color scheme consists of four colors that form a rectangle on the color wheel.



179.5580, 34.2000, 18.9680



177.0680, 40.8510, 3.0510



165.3100, -42.6360, -20.2680



166.4680, -54.2840, -7.4040

Sweetspot

The Sweet Spot groups the original color and five complimentary colors.



179.5580, 34.2000, 18.9680



239.5610, 11.7820, 6.7420



180.4740, 8.6140, 31.1260



117.9410, 7.6560, 4.4240



0.0000, 0.0000, 0.0000



128.0000, -0.0000, -0.0000

Same Dimension

The Same Dimension uses a secret algorithm to generate beautiful new colors.



179.5580, 34.2000, 18.9680



195.0050, 46.3030, 25.3990



187.1260, 34.9360, 5.6240



104.6310, 5.5930, 3.2650



57.5260, 91.0930, 50.6850



15.7200, 24.7560, 13.9080

Inverse Universe

The Inverse Universe completely reimagines the original color for something new.



179.5580, 34.2000, 18.9680



195.0050, 46.3030, 25.3990



194.8740, -34.9360, -5.6240



104.6310, 5.5930, 3.2650



57.5260, 91.0930, 50.6850



15.7200, 24.7560, 13.9080

Previews

White Background



This preview shows how the YIQ color 179.5580, 34.2000, 18.9680 looks on a white background.

Color Contrast Check

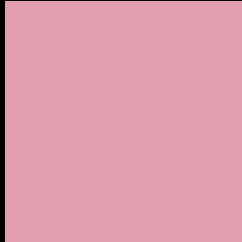
Large Text (above 18pt) WCAG AA × Fail

Any Text WCAG AA × Fail

Large Text (above 18pt) WCAG AAA × Fail

Any Text WCAG AAA × Fail

Black Background



This preview shows how the YIQ color 179.5580, 34.2000, 18.9680 looks on a black background.

Color Contrast Check

Large Text (above 18pt) WCAG AA ✓ Pass

Any Text WCAG AA ✓ Pass

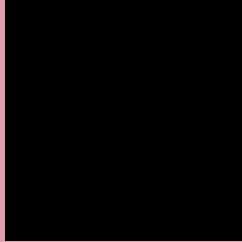
Large Text (above 18pt) WCAG AAA ✓ Pass

Any Text WCAG AAA ✓ Pass

If you want to check with other color combinations, try the [Color Contrast Checker](#).

YIQ 179.5580, 34.2000, 18.9680

Background



This preview shows how black text looks on a background with the YIQ color 179.5580, 34.2000, 18.9680.



This preview shows how white text looks on a background with the YIQ color 179.5580, 34.2000,

18.9680.

Color Blindness Simulation

Color vision deficiency is a very complex topic, and I could not describe the different causes any better than Wikipedia does, so if you want to learn more, you should check out their [article about color blindness](#).

Dichromacy



Original Color

179.5580, 34.2000, 18.9680

Protanopia

176.6240, -1.6970, 3.2230

Deuteranopia

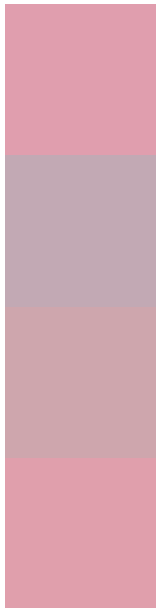
177.7030, 14.2580, 5.9220



Tritanopia

179.8030, 34.8880, 17.5120

Trichromacy



Original Color

179.5580, 34.2000, 18.9680

Protanomaly

177.7290, 11.3690, 8.7210

Deuteranomaly

178.7580, 21.5930, 10.6570

Tritanomaly

179.9170, 34.5670, 17.8230

Monochromacy



Original Color

179.5580, 34.2000, 18.9680

Achromatopsia

180.0000, -0.0000, -0.0000

Achromatomaly

179.8600, 12.3780, 6.9540

CSS Examples

Text

The CSS property to change the color of the text to YIQ 179.5580, 34.2000, 18.9680 is called "color". The color property can be set on classes, ids or directly on the HTML element.

This example shows how text in the color `rgb(224, 158, 174)` looks like.

```
.text, #text, p{  
    color:rgb(224, 158, 174)  
}
```

If you want to add a text shadow in that color use the text-shadow property, you can generate a text shadow directly with our [CSS Text Shadow Generator](#).

Here you see how black text with a 4 pixel rgb(224, 158, 174) colored shadow looks like.

```
.shadow{ text-shadow: 4px 4px 2px rgb(224, 158, 174) }
```

Border

The CSS property to change the border of an element to YIQ 179.5580, 34.2000, 18.9680 is called "border". The border property can be set on classes, ids or directly on the HTML element.

This example shows the color as border, it can be applied via the CSS property "border" or "border-color".

```
.border, #border, table{ border:4px solid rgb(224, 158, 174) }
```


If only the border color should be changed use the property border-color.

```
.border{ border-color:rgb(224, 158, 174) }
```

If you want to add a box shadow in that color use:

Here you see how a box with a 4 pixel rgb(224, 158, 174) colored shadow looks like.

```
.boxshadow{ -moz-box-shadow:4px 4px 4px  
4px rgb(224, 158, 174); -webkit-box-  
shadow:4px 4px 4px 4px rgb(224, 158, 174);  
box-shadow:4px 4px 4px 4px rgb(224, 158,  
174) }
```

Background

The CSS property to change the background color of an element to YIQ 179.5580, 34.2000, 18.9680 is called "background". The background property can be set on classes, ids or directly on the HTML element.

```
.background, #background, body{  
background: rgb(224, 158, 174) }
```

If only the background color should be changed can be used:

```
.background{ background-color: rgb(224,  
158, 174) }
```

This example shows the color as background, it is applied via the CSS property "background".

To optimize and compress your CSS code, you can use our [online CSS compressor and optimizer](#) based on csstidy. If you want to create a linear or radial gradient as background or border, check our [CSS Gradient Generator](#).

Hey! You found this booklet interesting? Support Converting Colors with the new Membership Option!

The pro membership hides all ads, plus gives you double the colors in the color bucket, and more awesome pro features!

[Learn more, Memberships starting at \\$2.50/m!](#)

**Follow me
on Twitter!**

@ConvertingColor