

Converting Colors

YIQ(179.5680, 19.0720, 6.7840)

Have a look what the booklet for
YIQ(179.5680, 19.0720, 6.7840)
contains.

YIQ(179.5680, 19.0720, 6.7840)	3
<i>Conversions</i>	4
<i>Details</i>	6
<i>Harmonies</i>	12
<i>Previews</i>	24
<i>Color Blindness Simulation</i>	28
<i>CSS Examples</i>	31

Color

**YIQ(179.5680, 19.0720,
6.7840)**

Conversions

Conversions Part 1

Format	Color
Hex	CAAAAA
RGB	202, 170, 170
RGB Percent	79%, 67%, 67%
CMY	0.2078, 0.3334, 0.3333
CMYK	0.00, 0.16, 0.16, 0.21
HSL	360°, 23%, 73%
HSV	360°, 16%, 79%
XYZ	45.9921, 44.2067, 44.1485
YIQ	179.5680, 19.0720, 6.7840

Conversions

Conversions Part 2

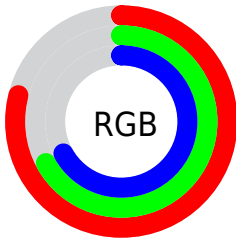
Format	Color
R _Y B	202, 170, 170
Decimal	13281962
CIE Lab	72.37, 11.65, 4.33
CIE LCh	72, 12.428, 20.371
Yxy	44.2067, 0.3423, 0.3290
Android (android.graphics.Color)	4291472042 (0xFFCAA AAA)
YUV	179.5680, -4.7170, 19.6729
Hunter-Lab	66.4881, 7.1204, 7.1728

Details

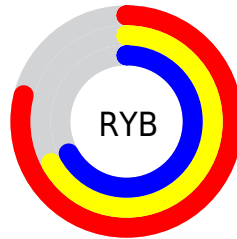
The YIQ color **179.5680, 19.0720, 6.7840** is a light color, and the websafe version is hex **CC9999**. A complement of this color would be **192.4320, -19.0720, -6.7840**, and the grayscale version is **180.0000, -0.0000, -0.0000**.

A 20% lighter version of the original color is **233.9700, 17.8800, 6.3600**, and **126.9700, 17.8800, 6.3600** is the 20% darker color. If you saturate the color by 10%, you get **165.5480, 30.9920, 11.0240**, and if you desaturate by 10%, it is **193.5880, 7.1520, 2.5440**.

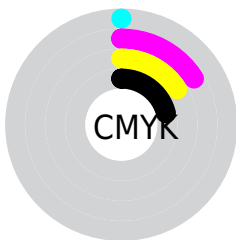
Distribution



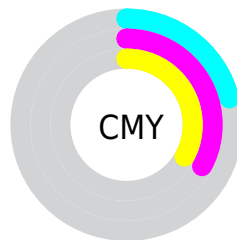
- Red (79%)
- Green (67%)
- Blue (67%)



- Red (79%)
- Yellow (67%)
- Blue (67%)



- Cyan (0%)
- Magenta (16%)
- Yellow (16%)
- Black (21%)



- Cyan (21%)
- Magenta (33%)
- Yellow (33%)

Brightness & Saturation Gradients

These gradients show how the YIQ color 179.5680, 19.0720, 6.7840 changes by changing the brightness by 10 percent. The first figure shows a shift by +10% for each color and the second figure -10%.

Similar to the brightness gradients but the following saturation gradients show a change of the YIQ color 179.5680, 19.0720, 6.7840 by changing the saturation by 10% instead.

■ 179.5680, 19.0720,
6.7840

■ 179.5680, 19.0720,
6.7840

255.0000, -0.0000,
-0.0000

■ 152.3830, 18.1550,
6.8830

■ 233.9700, 17.8800,
6.3600

■ 126.9700, 17.8800,
6.3600

■ 254.2990, 0.5960,
0.2120

■ 101.6710, 17.2840,
6.1480

■ 77.1870, 15.7710,
6.0350

■ 54.4750, 14.9000,
5.3000

■ 32.9910, 13.3870,
5.1870

■ 8.9700, 17.8800,

6.3600

■ 0.0000, 0.0000,
0.0000

■ 179.5680, 19.0720,
6.7840

■ 179.5680, 19.0720,
6.7840

■ 165.5480, 30.9920,
11.0240

■ 193.5880, 7.1520,
2.5440

■ 151.5280, 42.9120,
15.2640

■ 207.6080, -4.7680,
-1.6960

■ 136.8070, 55.4280,
19.7160

■ 222.3290,
-17.2840, -6.1480

■ 122.7870, 67.3480,
23.9560

■ 236.3490,
-29.2040, -10.3880

■ 108.7670, 79.2680,
28.1960

■ 239.1530,
-31.5880, -11.2360

■ 94.7470, 91.1880,
32.4360

■ 80.7270, 103.1080,
36.6760

■ 66.1200, 115.3030,
41.4390

■ 60.3980, 120.3920,
42.8240

Harmonies

Analogous

The Analogous color harmony consists of three colors that are next to each other on the color wheel.



179.7400, 12.8360, 9.6680



179.5680, 19.0720, 6.7840



178.7050, 19.9440, 1.9920

Triad

The Triadic color harmony groups three colors that are evenly spaced from another and form a triangle on the color wheel.



179.5680, 19.0720, 6.7840



174.7510, -4.0330, -9.5130



176.5990, -17.7440, 2.1920

Complementary

The Complementary color scheme is a pair of colors which are on the opposite of each other on the color wheel.



179.5680, 19.0720, 6.7840



192.4320, -19.0720, -6.7840

Split Complementary

Split-complementary colors differ from the complementary color scheme. The scheme consists of three colors, the original color and two neighbors of the complement color.



174.8000, -22.9240, -3.0520



179.5680, 19.0720, 6.7840



173.7760, -14.3490, -9.7810

Square

The Square scheme is like the rectangle color scheme, but the four colors are evenly spaced on the color wheel.



179.5680, 19.0720, 6.7840



176.0790, 6.7870, -7.3650



173.6490, -21.1810, -7.1090



178.3230, -7.9790, 6.9410

Rectangle

The Rectangle color scheme consists of four colors that form a rectangle on the color wheel.



179.5680, 19.0720, 6.7840



177.9280, 17.6980, -1.3580



173.6490, -21.1810, -7.1090



175.7620, -19.7610, 0.1990

Sweetspot

The Sweet Spot groups the original color and five complimentary colors.



179.5680, 19.0720, 6.7840



245.8870, 7.7480, 2.7560



182.9170, 8.2040, 16.5240



122.3920, 4.7680, 1.6960



0.0000, 0.0000, 0.0000



128.0000, -0.0000, -0.0000

Same Dimension

The Same Dimension uses a secret algorithm to generate beautiful new colors.



179.5680, 19.0720, 6.7840



221.3520, 28.6080, 10.1760



188.3730, 14.9470, -1.0610



94.9900, 5.9600, 2.1200



49.6340, 98.9360, 35.1920



11.3620, 22.6480, 8.0560

Inverse Universe

The Inverse Universe completely reimagines the original color for something new.



179.5680, 19.0720, 6.7840



221.3520, 28.6080, 10.1760



183.6270, -14.9470, 1.0610



94.9900, 5.9600, 2.1200



49.6340, 98.9360, 35.1920



11.3620, 22.6480, 8.0560

Previews

White Background



This preview shows how the YIQ color 179.5680, 19.0720, 6.7840 looks on a white background.

Color Contrast Check

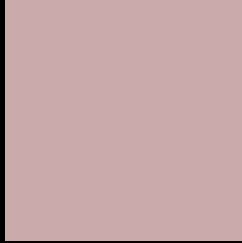
Large Text (above 18pt) WCAG AA × Fail

Any Text WCAG AA × Fail

Large Text (above 18pt) WCAG AAA × Fail

Any Text WCAG AAA × Fail

Black Background



This preview shows how the YIQ color 179.5680, 19.0720, 6.7840 looks on a black background.

Color Contrast Check

Large Text (above 18pt) WCAG AA ✓ Pass

Any Text WCAG AA ✓ Pass

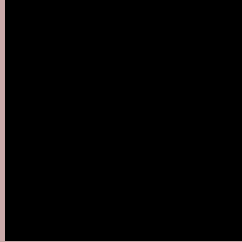
Large Text (above 18pt) WCAG AAA ✓ Pass

Any Text WCAG AAA ✓ Pass

If you want to check with other color combinations, try the [Color Contrast Checker](#).

YIQ 179.5680, 19.0720, 6.7840

Background



This preview shows how black text looks on a background with the YIQ color 179.5680, 19.0720, 6.7840.



This preview shows how white text looks on a background with the YIQ color 179.5680, 19.0720,

6.7840.

Color Blindness Simulation

Color vision deficiency is a very complex topic, and I could not describe the different causes any better than Wikipedia does, so if you want to learn more, you should check out their [article about color blindness](#).

Dichromacy



Original Color

179.5680, 19.0720, 6.7840

Protanopia

178.1530, 3.9430, 0.1270

Deuteranopia

179.5460, 16.1380, 4.8900



Tritanopia

179.9470, 16.6870, 11.4630

Trichromacy



Original Color

179.5680, 19.0720, 6.7840

Protanomaly

178.3710, 9.2610, 2.8690

Deuteranomaly

179.2580, 17.0090, 5.6250

Tritanomaly

180.0780, 17.6960, 9.6960

Monochromacy



Original Color

179.5680, 19.0720, 6.7840

Achromatopsia

180.0000, -0.0000, -0.0000

Achromatomaly

179.5880, 7.1520, 2.5440

CSS Examples

Text

The CSS property to change the color of the text to YIQ 179.5680, 19.0720, 6.7840 is called "color". The color property can be set on classes, ids or directly on the HTML element.

This example shows how text in the color `rgb(202, 170, 170)` looks like.

```
.text, #text, p{  
    color:rgb(202, 170, 170)  
}
```

If you want to add a text shadow in that color use the text-shadow property, you can generate a text shadow directly with our [CSS Text Shadow Generator](#).

Here you see how black text with a 4 pixel rgb(202, 170, 170) colored shadow looks like.

```
.shadow{ text-shadow: 4px 4px 2px rgb(202, 170, 170) }
```

Border

The CSS property to change the border of an element to YIQ 179.5680, 19.0720, 6.7840 is called "border". The border property can be set on classes, ids or directly on the HTML element.

This example shows the color as border, it can be applied via the CSS property "border" or "border-color".

```
.border, #border, table{ border:4px solid rgb(202, 170, 170) }
```


If only the border color should be changed use the property border-color.

```
.border{ border-color:rgb(202, 170, 170) }
```

If you want to add a box shadow in that color use:

Here you see how a box with a 4 pixel rgb(202, 170, 170) colored shadow looks like.

```
.boxshadow{ -moz-box-shadow:4px 4px 4px  
4px rgb(202, 170, 170); -webkit-box-  
shadow:4px 4px 4px 4px rgb(202, 170, 170);  
box-shadow:4px 4px 4px 4px rgb(202, 170,  
170) }
```

Background

The CSS property to change the background color of an element to YIQ 179.5680, 19.0720, 6.7840 is called "background". The background property can be set on classes, ids or directly on the HTML element.

```
.background, #background, body{  
background: rgb(202, 170, 170) }
```

If only the background color should be changed can be used:

```
.background{ background-color: rgb(202,  
170, 170) }
```

This example shows the color as background, it is applied via the CSS property "background".

To optimize and compress your CSS code, you can use our [online CSS compressor and optimizer](#) based on csstidy. If you want to create a linear or radial gradient as background or border, check our [CSS Gradient Generator](#).

Hey! You found this booklet interesting? Support Converting Colors with the new Membership Option!

The pro membership hides all ads, plus gives you double the colors in the color bucket, and more awesome pro features!

[Learn more, Memberships starting at \\$2.50/m!](#)

**Follow me
on Twitter!**

@ConvertingColor