

Converting Colors

YIQ(179.9100, 18.1090, 7.7170)

Have a look what the booklet for
YIQ(179.9100, 18.1090, 7.7170)
contains.

YIQ(179.9100, 18.1090, 7.7170)	3
<i>Conversions</i>	4
<i>Details</i>	6
<i>Harmonies</i>	12
<i>Previews</i>	24
<i>Color Blindness Simulation</i>	28
<i>CSS Examples</i>	31

Color

**YIQ(179.9100, 18.1090,
7.7170)**

Conversions

Conversions Part 1

Format	Color
Hex	CAAAAD
RGB	202, 170, 173
RGB Percent	79%, 67%, 68%
CMY	0.2078, 0.3334, 0.3215
CMYK	0.00, 0.16, 0.14, 0.21
HSL	354°, 23%, 73%
HSV	354°, 16%, 79%
XYZ	46.2793, 44.3216, 45.6599
YIQ	179.9100, 18.1090, 7.7170

Conversions

Conversions Part 2

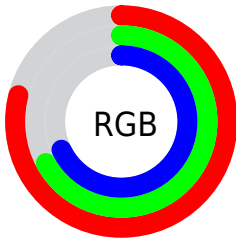
Format	Color
R _Y B	202, 170, 173
Decimal	13281965
CIE Lab	72.44, 12.14, 2.79
CIE LCh	72, 12.453, 12.937
Yxy	44.3216, 0.3396, 0.3253
Android (android.graphics.Color)	4291472045 (0xFFCAAAD)
YUV	179.9100, -3.4066, 19.3729
Hunter-Lab	66.5744, 7.5791, 5.9382

Details

The YIQ color **179.9100, 18.1090, 7.7170** is a light color, and the websafe version is hex **CC9999**. A complement of this color would be **192.0900, -18.1090, -7.7170**, and the grayscale version is **180.0000, -0.0000, -0.0000**.

A 20% lighter version of the original color is **234.3120, 16.9170, 7.2930**, and **127.3120, 16.9170, 7.2930** is the 20% darker color. If you saturate the color by 10%, you get **166.1180, 29.3870, 12.5790**, and if you desaturate by 10%, it is **193.7020, 6.8310, 2.8550**.

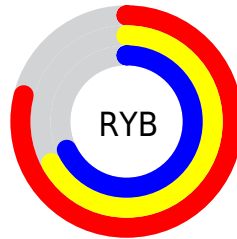
Distribution



Red (79%)

Green (67%)

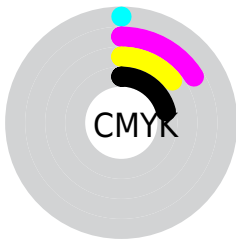
Blue (68%)



Red (79%)

Yellow (67%)

Blue (68%)

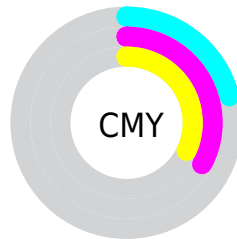


Cyan (0%)

Magenta (16%)

Yellow (14%)

Black (21%)



Cyan (21%)

Magenta (33%)

Yellow (32%)

Brightness & Saturation Gradients

These gradients show how the YIQ color 179.9100, 18.1090, 7.7170 changes by changing the brightness by 10 percent. The first figure shows a shift by +10% for each color and the second figure -10%.

Similar to the brightness gradients but the following saturation gradients show a change of the YIQ color 179.9100, 18.1090, 7.7170 by changing the saturation by 10% instead.

■ 179.9100, 18.1090,
7.7170

■ 179.9100, 18.1090,
7.7170

255.0000, -0.0000,
-0.0000

■ 152.6110, 17.5130,
7.5050

■ 234.3120, 16.9170,
7.2930

■ 127.3120, 16.9170,
7.2930

254.4130, 0.2750,
0.5230

■ 102.0130, 16.3210,
7.0810

■ 77.4150, 15.1290,
6.6570

■ 54.8170, 13.9370,
6.2330

■ 33.2190, 12.7450,
5.8090

■ 9.3120, 16.9170,

7.2930

0.0000, 0.0000,
0.0000

179.9100, 18.1090,
7.7170

179.9100, 18.1090,
7.7170

166.1180, 29.3870,
12.5790

193.7020, 6.8310,
2.8550

152.2120, 40.9860,
17.1300

207.6080, -4.7680,
-1.6960

137.8330, 52.5390,
22.5150

221.9870,
-16.3210, -7.0810

124.0410, 63.8170,
27.3770

235.7790,
-27.5990, -11.9430

110.2490, 75.0950,
32.2390

239.1530,
-31.5880, -11.2360

■ 96.3430, 86.6940,
36.7900

■ 82.5510, 97.9720,
41.6520

■ 68.1720, 109.5250,
47.0370

■ 62.5640, 114.2930,
48.7330

Harmonies

Analogous

The Analogous color harmony consists of three colors that are next to each other on the color wheel.



180.3700, 11.0020, 9.8660



179.9100, 18.1090, 7.7170



179.6450, 20.1730, 3.3490

Triad

The Triadic color harmony groups three colors that are evenly spaced from another and form a triangle on the color wheel.



179.9100, 18.1090, 7.7170



175.7190, -1.0070, -9.2870



176.1750, -19.4860, 0.7220

Complementary

The Complementary color scheme is a pair of colors which are on the opposite of each other on the color wheel.



179.9100, 18.1090, 7.7170



192.0900, -18.1090, -7.7170

Split Complementary

Split-complementary colors differ from the complementary color scheme. The scheme consists of three colors, the original color and two neighbors of the complement color.



174.2730, -22.8780, -3.8860



179.9100, 18.1090, 7.7170



174.4450, -11.9190, -9.7670

Square

The Square scheme is like the rectangle color scheme, but the four colors are evenly spaced on the color wheel.



179.9100, 18.1090, 7.7170



176.6880, 9.4460, -5.9940



173.6060, -19.6220, -7.8300



178.1270, -10.3630, 6.0930

Rectangle

The Rectangle color scheme consists of four colors that form a rectangle on the color wheel.



179.9100, 18.1090, 7.7170



178.7540, 18.2480, -0.3120



173.6060, -19.6220, -7.8300



175.7510, -21.2280, -0.7480

Sweetspot

The Sweet Spot groups the original color and five complimentary colors.



179.9100, 18.1090, 7.7170



246.0010, 7.4270, 3.0670



182.3190, 7.0120, 16.1000



122.5060, 4.4470, 2.0070



0.0000, 0.0000, 0.0000



128.0000, -0.0000, -0.0000

Same Dimension

The Same Dimension uses a secret algorithm to generate beautiful new colors.



179.9100, 18.1090, 7.7170



221.8080, 27.3240, 11.4200



187.1990, 15.4970, -0.0150



95.1040, 5.6390, 2.4310



51.4580, 93.8000, 40.1680



11.8180, 21.3640, 9.3000

Inverse Universe

The Inverse Universe completely reimagines the original color for something new.



179.9100, 18.1090, 7.7170



221.8080, 27.3240, 11.4200



184.8010, -15.4970, 0.0150



95.1040, 5.6390, 2.4310



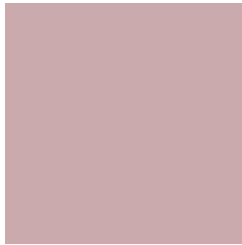
51.4580, 93.8000, 40.1680



11.8180, 21.3640, 9.3000

Previews

White Background



This preview shows how the YIQ color 179.9100, 18.1090, 7.7170 looks on a white background.

Color Contrast Check

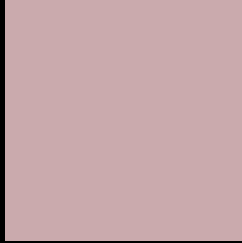
Large Text (above 18pt) WCAG AA × Fail

Any Text WCAG AA × Fail

Large Text (above 18pt) WCAG AAA × Fail

Any Text WCAG AAA × Fail

Black Background



This preview shows how the YIQ color 179.9100, 18.1090, 7.7170 looks on a black background.

Color Contrast Check

Large Text (above 18pt) WCAG AA ✓ Pass

Any Text WCAG AA ✓ Pass

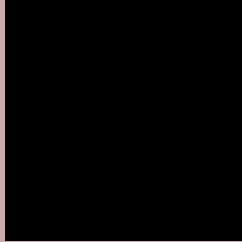
Large Text (above 18pt) WCAG AAA ✓ Pass

Any Text WCAG AAA ✓ Pass

If you want to check with other color combinations, try the [Color Contrast Checker](#).

YIQ 179.9100, 18.1090, 7.7170

Background



This preview shows how black text looks on a background with the YIQ color 179.9100, 18.1090, 7.7170.



This preview shows how white text looks on a background with the YIQ color 179.9100, 18.1090,

Color Blindness Simulation

Color vision deficiency is a very complex topic, and I could not describe the different causes any better than Wikipedia does, so if you want to learn more, you should check out their [article about color blindness](#).

Dichromacy



Original Color

179.9100, 18.1090, 7.7170

Protanopia

178.1960, 2.3840, 0.8480

Deuteranopia

179.5890, 14.5790, 5.6110



Tritanopia

180.6480, 16.0910, 11.2510

Trichromacy



Original Color

179.9100, 18.1090, 7.7170

Protanomaly

178.7130, 8.2980, 3.8020

Deuteranomaly

179.6000, 16.0460, 6.5580

Tritanomaly

180.3060, 17.0540, 10.3180

Monochromacy



Original Color

179.9100, 18.1090, 7.7170

Achromatopsia

180.0000, -0.0000, -0.0000

Achromatomaly

179.7020, 6.8310, 2.8550

CSS Examples

Text

The CSS property to change the color of the text to YIQ 179.9100, 18.1090, 7.7170 is called "color". The color property can be set on classes, ids or directly on the HTML element.

This example shows how text in the color `rgb(202, 170, 173)` looks like.

```
.text, #text, p{  
    color:rgb(202, 170, 173)  
}
```

If you want to add a text shadow in that color use the text-shadow property, you can generate a text shadow directly with our [CSS Text Shadow Generator](#).

Here you see how black text with a 4 pixel rgb(202, 170, 173) colored shadow looks like.

```
.shadow{ text-shadow: 4px 4px 2px rgb(202, 170, 173) }
```

Border

The CSS property to change the border of an element to YIQ 179.9100, 18.1090, 7.7170 is called "border". The border property can be set on classes, ids or directly on the HTML element.

This example shows the color as border, it can be applied via the CSS property "border" or "border-color".

```
.border, #border, table{ border:4px solid rgb(202, 170, 173) }
```


If only the border color should be changed use the property border-color.

```
.border{ border-color:rgb(202, 170, 173) }
```

If you want to add a box shadow in that color use:

Here you see how a box with a 4 pixel rgb(202, 170, 173) colored shadow looks like.

```
.boxshadow{ -moz-box-shadow:4px 4px 4px  
4px rgb(202, 170, 173); -webkit-box-  
shadow:4px 4px 4px 4px rgb(202, 170, 173);  
box-shadow:4px 4px 4px 4px rgb(202, 170,  
173) }
```

Background

The CSS property to change the background color of an element to YIQ 179.9100, 18.1090, 7.7170 is called "background". The background property can be set on classes, ids or directly on the HTML element.

```
.background, #background, body{  
background: rgb(202, 170, 173) }
```

If only the background color should be changed can be used:

```
.background{ background-color: rgb(202,  
170, 173) }
```

This example shows the color as background, it is applied via the CSS property "background".

To optimize and compress your CSS code, you can use our [online CSS compressor and optimizer](#) based on csstidy. If you want to create a linear or radial gradient as background or border, check our [CSS Gradient Generator](#).

Hey! You found this booklet interesting? Support Converting Colors with the new Membership Option!

The pro membership hides all ads, plus gives you double the colors in the color bucket, and more awesome pro features!

[Learn more, Memberships starting at \\$2.50/m!](#)

**Follow me
on Twitter!**

@ConvertingColor