

Converting Colors

YIQ(180.3890, 35.2130, -4.9070)

Have a look what the booklet for
YIQ(180.3890, 35.2130, -4.9070)
contains.

YIQ(180.3890, 35.2130, -4.9070)	3
<i>Conversions</i>	4
<i>Details</i>	6
<i>Harmonies</i>	12
<i>Previews</i>	24
<i>Color Blindness Simulation</i>	28
<i>CSS Examples</i>	31

Color

**YIQ(180.3890, 35.2130,
-4.9070)**

Conversions

Conversions Part 1

Format	Color
Hex	D3AE85
RGB	211, 174, 133
RGB Percent	83%, 68%, 52%
CMY	0.1725, 0.3177, 0.4783
CMYK	0.00, 0.18, 0.37, 0.17
HSL	32°, 47%, 67%
HSV	32°, 37%, 83%
XYZ	46.2382, 45.8120, 28.6117
YIQ	180.3890, 35.2130, -4.9070

Conversions

Conversions Part 2

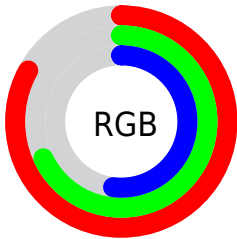
Format	Color
R _Y B	203, 211, 133
Decimal	13872773
CIE Lab	73.42, 7.79, 26.08
CIE LCh	73, 27.216, 73.358
Yxy	45.8120, 0.3832, 0.3797
Android (android.graphics.Color)	4292062853 (0xFFD3AE85)
YUV	180.3890, -23.3628, 26.8458
Hunter-Lab	67.6845, 3.4931, 22.3160

Details

The YIQ color $180.3890, 35.2130, -4.9070$ is a light color, and the websafe version is hex $CC9966$. A complement of this color would be $163.6110, -35.2130, 4.9070$, and the grayscale version is $181.0000, -0.0000, 0.0000$.

A 20% lighter version of the original color is $231.8720, 29.2990, -7.8610$, and $127.4210, 32.1870, -5.1330$ is the 20% darker color. If you saturate the color by 10%, you get $172.1250, 44.7040, -6.2080$, and if you desaturate by 10%, it is $188.6530, 25.7220, -3.6060$.

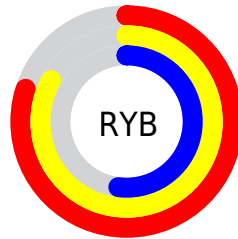
Distribution



Red (83%)

Green (68%)

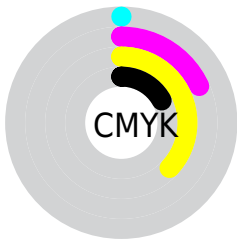
Blue (52%)



Red (80%)

Yellow (83%)

Blue (52%)

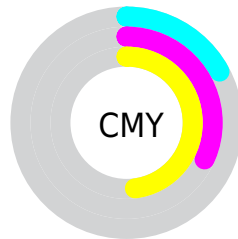


Cyan (0%)

Magenta (18%)

Yellow (37%)

Black (17%)



Cyan (17%)

Magenta (32%)

Yellow (48%)

Brightness & Saturation Gradients

These gradients show how the YIQ color 180.3890, 35.2130, -4.9070 changes by changing the brightness by 10 percent. The first figure shows a shift by +10% for each color and the second figure -10%.

Similar to the brightness gradients but the following saturation gradients show a change of the YIQ color 180.3890, 35.2130, -4.9070 by changing the saturation by 10% instead.

■ 180.3890, 35.2130,
-4.9070

■ 180.3890, 35.2130,
-4.9070

■ 255.0000, -0.0000,
-0.0000

■ 153.3180, 33.9750,
-4.4970

■ 231.8720, 29.2990,
-7.8610

■ 127.4210, 32.1870,
-5.1330

■ 250.3260, 13.1610,
-12.7510

■ 102.0510, 30.3530,
-4.9350

■ 253.6320, 3.8520,
-3.7320

■ 77.5670, 28.8400,
-5.0480

■ 54.3710, 26.4560,
-5.8960

■ 33.4570, 23.3380,
-4.4540

■ 12.1930, 15.6340,

3.0100

■ 0.0000, 0.0000,
0.0000

■ 180.3890, 35.2130,
-4.9070

■ 180.3890, 35.2130,
-4.9070

■ 172.1250, 44.7040,
-6.2080

■ 188.6530, 25.7220,
-3.6060

■ 163.8610, 54.1950,
-7.5090

■ 196.9170, 16.2310,
-2.3050

■ 155.5970, 63.6860,
-8.8100

■ 205.1810, 6.7400,
-1.0040

■ 147.3330, 73.1770,
-10.1110

■ 213.4450, -2.7510,
0.2970

■ 139.0690, 82.6680,
-11.4120

■ 221.8230,
-12.5630, 1.9090

■ 130.6910, 92.4800,
-13.0240

■ 229.5170,
-20.4490, 1.6550

■ 128.2460, 95.2310,
-13.3210

■ 235.3870,
-23.1990, -3.5750

■ 241.2570,
-25.9490, -8.8050

■ 241.8440,
-26.2240, -9.3280

Harmonies

Analogous

The Analogous color harmony consists of three colors that are next to each other on the color wheel.



182.0730, 42.4550, 7.0230



180.3890, 35.2130, -4.9070



177.7950, 19.0300, -14.4900

Triad

The Triadic color harmony groups three colors that are evenly spaced from another and form a triangle on the color wheel.



180.3890, 35.2130, -4.9070



168.5420, -49.1010, -18.7410



183.7300, 1.6010, 20.5530

Complementary

The Complementary color scheme is a pair of colors which are on the opposite of each other on the color wheel.



180.3890, 35.2130, -4.9070



163.6110, -35.2130, 4.9070

Split Complementary

Split-complementary colors differ from the complementary color scheme. The scheme consists of three colors, the original color and two neighbors of the complement color.



180.5140, -24.3940, 12.5820



180.3890, 35.2130, -4.9070



169.3920, -57.1260, -10.9660

Square

The Square scheme is like the rectangle color scheme, but the four colors are evenly spaced on the color wheel.



180.3890, 35.2130, -4.9070



171.2700, -27.9640, -21.8520



174.8160, -46.2160, 0.5680



184.5770, 24.0210, 21.7250

Rectangle

The Rectangle color scheme consists of four colors that form a rectangle on the color wheel.



180.3890, 35.2130, -4.9070



176.0320, 5.0010, -19.0550



174.8160, -46.2160, 0.5680



183.0710, -6.7890, 18.4190

Sweetspot

The Sweet Spot groups the original color and five complimentary colors.



180.3890, 35.2130, -4.9070



244.1770, 12.5630, -1.9090



160.6540, 34.2900, 28.3540



121.3660, 7.6570, -1.1030



0.0000, 0.0000, 0.0000



128.0000, -0.0000, -0.0000

Same Dimension

The Same Dimension uses a secret algorithm to generate beautiful new colors.



180.3890, 35.2130, -4.9070



211.1210, 50.5270, -7.1130



201.8090, 24.4420, -24.4700



100.8110, 4.9060, -0.8060



101.8880, 75.9280, -10.4080



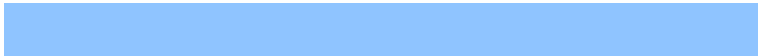
24.5860, 18.6610, -2.2910

Inverse Universe

The Inverse Universe completely reimagines the original color for something new.



163.6110, -35.2130, 4.9070



186.8790, -50.5270, 7.1130



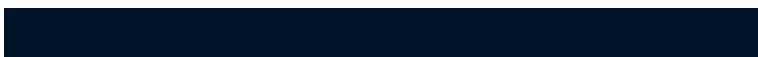
142.1910, -24.4420, 24.4700



98.1890, -4.9060, 0.8060



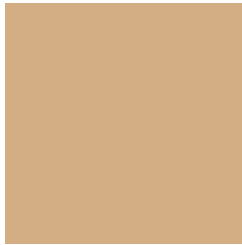
66.1120, -75.9280, 10.4080



15.8270, -18.3860, 2.8140

Previews

White Background



This preview shows how the YIQ color 180.3890, 35.2130, -4.9070 looks on a white background.

Color Contrast Check

Large Text (above 18pt) WCAG AA × Fail

Any Text WCAG AA × Fail

Large Text (above 18pt) WCAG AAA × Fail

Any Text WCAG AAA × Fail

Black Background



This preview shows how the YIQ color 180.3890, 35.2130, -4.9070 looks on a black background.

Color Contrast Check

Large Text (above 18pt) WCAG AA ✓ Pass

Any Text WCAG AA ✓ Pass

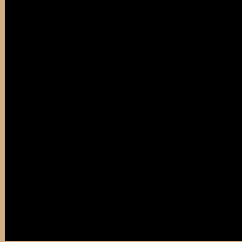
Large Text (above 18pt) WCAG AAA ✓ Pass

Any Text WCAG AAA ✓ Pass

If you want to check with other color combinations, try the [Color Contrast Checker](#).

YIQ 180.3890, 35.2130, -4.9070

Background



This preview shows how black text looks on a background with the YIQ color 180.3890, 35.2130, -4.9070.



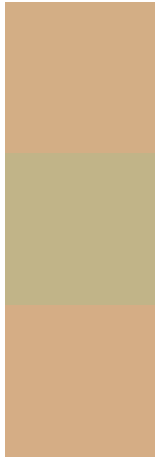
This preview shows how white text looks on a background with the YIQ color 180.3890, 35.2130,

-4.9070.

Color Blindness Simulation

Color vision deficiency is a very complex topic, and I could not describe the different causes any better than Wikipedia does, so if you want to learn more, you should check out their [article about color blindness](#).

Dichromacy



Original Color

180.3890, 35.2130, -4.9070

Protanopia

178.8710, 21.8720, -10.9280

Deuteranopia

180.4000, 36.6800, -3.9600



Tritanopia

183.8340, 24.4350, 14.2190

Trichromacy



Original Color

180.3890, 35.2130, -4.9070

Protanomaly

179.6760, 26.9150, -8.7090

Deuteranomaly

180.1010, 36.0840, -4.1720

Tritanomaly

182.4720, 28.1500, 7.4620

Monochromacy



Original Color

180.3890, 35.2130, -4.9070

Achromatopsia

180.0000, -0.0000, -0.0000

Achromatomaly

180.1770, 12.5630, -1.9090

CSS Examples

Text

The CSS property to change the color of the text to YIQ 180.3890, 35.2130, -4.9070 is called "color". The color property can be set on classes, ids or directly on the HTML element.

This example shows how text in the color `rgb(211, 174, 133)` looks like.

```
.text, #text, p{  
    color:rgb(211, 174, 133)  
}
```

If you want to add a text shadow in that color use the text-shadow property, you can generate a text shadow directly with our [CSS Text Shadow Generator](#).

Here you see how black text with a 4 pixel rgb(211, 174, 133) colored shadow looks like.

```
.shadow{ text-shadow: 4px 4px 2px rgb(211, 174, 133) }
```

Border

The CSS property to change the border of an element to YIQ 180.3890, 35.2130, -4.9070 is called "border". The border property can be set on classes, ids or directly on the HTML element.

This example shows the color as border, it can be applied via the CSS property "border" or "border-color".

```
.border, #border, table{ border:4px solid rgb(211, 174, 133) }
```


If only the border color should be changed use the property `border-color`.

```
.border{ border-color:rgb(211, 174, 133) }
```

If you want to add a box shadow in that color use:

Here you see how a box with a 4 pixel `rgb(211, 174, 133)` colored shadow looks like.

```
.boxshadow{ -moz-box-shadow:4px 4px 4px  
4px rgb(211, 174, 133); -webkit-box-  
shadow:4px 4px 4px 4px rgb(211, 174, 133);  
box-shadow:4px 4px 4px 4px rgb(211, 174,  
133) }
```

Background

The CSS property to change the background color of an element to YIQ 180.3890, 35.2130, -4.9070 is called "background". The background property can be set on classes, ids or directly on the HTML element.

```
.background, #background, body{  
background: rgb(211, 174, 133) }
```

If only the background color should be changed can be used:

```
.background{ background-color: rgb(211,  
174, 133) }
```

This example shows the color as background, it is applied via the CSS property "background".

To optimize and compress your CSS code, you can use our [online CSS compressor and optimizer](#) based on csstidy. If you want to create a linear or radial gradient as background or border, check our [CSS Gradient Generator](#).

Hey! You found this booklet interesting? Support Converting Colors with the new Membership Option!

The pro membership hides all ads, plus gives you double the colors in the color bucket, and more awesome pro features!

[Learn more, Memberships starting at \\$2.50/m!](#)

**Follow me
on Twitter!**

@ConvertingColor