

Converting Colors

YIQ(180.7040, 21.6850, 8.9890)

Have a look what the booklet for
YIQ(180.7040, 21.6850, 8.9890)
contains.

YIQ(180.7040, 21.6850, 8.9890)	3
<i>Conversions</i>	4
<i>Details</i>	6
<i>Harmonies</i>	12
<i>Previews</i>	24
<i>Color Blindness Simulation</i>	28
<i>CSS Examples</i>	31

Color

**YIQ(180.7040, 21.6850,
8.9890)**

Conversions

Conversions Part 1

Format	Color
Hex	CFA9AC
RGB	207, 169, 172
RGB Percent	81%, 66%, 67%
CMY	0.1881, 0.3373, 0.3254
CMYK	0.00, 0.18, 0.17, 0.19
HSL	355°, 28%, 74%
HSV	355°, 18%, 81%
XYZ	47.3721, 44.6182, 45.1559
YIQ	180.7040, 21.6850, 8.9890

Conversions

Conversions Part 2

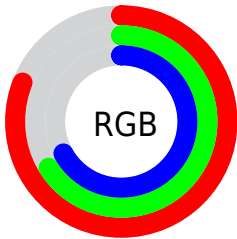
Format	Color
R_{YB}	207, 169, 172
Decimal	13609388
CIE _{Lab}	72.64, 14.36, 3.68
CIE _{LCh}	73, 14.825, 14.374
Yxy	44.6182, 0.3454, 0.3253
Android (android.graphics.Color)	4291799468 (0xFFCFA9AC)
YUV	180.7040, -4.2911, 23.0616
Hunter-Lab	66.7968, 9.6973, 6.6767

Details

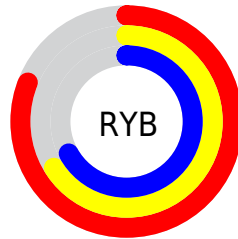
The YIQ color **180.7040, 21.6850, 8.9890** is a light color, and the websafe version is hex **CC9999**. A complement of this color would be **195.2960, -21.6850, -8.9890**, and the grayscale version is **181.0000, -0.0000, 0.0000**.

A 20% lighter version of the original color is **233.6110, 17.5130, 7.5050**, and **127.8070, 19.8970, 8.3530** is the 20% darker color. If you saturate the color by 10%, you get **166.2110, 33.5590, 14.0630**, and if you desaturate by 10%, it is **195.1970, 9.8110, 3.9150**.

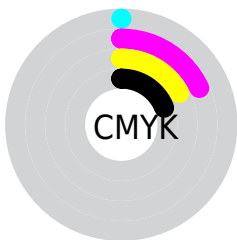
Distribution



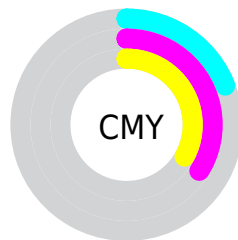
- Red (81%)
- Green (66%)
- Blue (67%)



- Red (81%)
- Yellow (66%)
- Blue (67%)



- Cyan (0%)
- Magenta (18%)
- Yellow (17%)
- Black (19%)



- Cyan (19%)
- Magenta (34%)
- Yellow (33%)

Brightness & Saturation Gradients

These gradients show how the YIQ color 180.7040, 21.6850, 8.9890 changes by changing the brightness by 10 percent. The first figure shows a shift by +10% for each color and the second figure -10%.

Similar to the brightness gradients but the following saturation gradients show a change of the YIQ color 180.7040, 21.6850, 8.9890 by changing the saturation by 10% instead.

■ 180.7040, 21.6850,
8.9890

■ 180.7040, 21.6850,
8.9890

255.0000, -0.0000,
-0.0000

■ 153.4050, 21.0890,
8.7770

■ 233.6110, 17.5130,
7.5050

■ 127.8070, 19.8970,
8.3530

■ 253.8260, 0.5500,
1.0460

■ 102.5080, 19.3010,
8.1410

■ 77.9100, 18.1090,
7.7170

■ 55.3120, 16.9170,
7.2930

■ 33.4150, 15.1290,
6.6570

■ 9.9810, 19.3470,

7.3070

0.0000, 0.0000,
0.0000

180.7040, 21.6850,
8.9890

180.7040, 21.6850,
8.9890

166.2110, 33.5590,
14.0630

195.1970, 9.8110,
3.9150

152.3050, 45.1580,
18.6140

209.1030, -1.7880,
-0.6360

137.8120, 57.0320,
23.6880

223.5960,
-13.6620, -5.7100

123.3190, 68.9060,
28.7620

238.0890,
-25.5360, -10.7840

108.8260, 80.7800,
33.8360

240.6480,
-28.6080, -10.1760

■ 94.9200, 92.3790,
38.3870

■ 80.4270, 104.2530,
43.4610

■ 65.9340, 116.1270,
48.5350

■ 63.8310, 117.9150,
49.1710

Harmonies

Analogous

The Analogous color harmony consists of three colors that are next to each other on the color wheel.



181.0930, 13.3400, 11.5480



180.7040, 21.6850, 8.9890



179.9120, 23.7950, 3.7870

Triad

The Triadic color harmony groups three colors that are evenly spaced from another and form a triangle on the color wheel.



180.7040, 21.6850, 8.9890



175.4800, -1.8320, -10.8560



176.4350, -23.1540, 1.1180

Complementary

The Complementary color scheme is a pair of colors which are on the opposite of each other on the color wheel.



180.7040, 21.6850, 8.9890



195.2960, -21.6850, -8.9890

Split Complementary

Split-complementary colors differ from the complementary color scheme. The scheme consists of three colors, the original color and two neighbors of the complement color.



174.4080, -27.6920, -4.7480



180.7040, 21.6850, 8.9890



174.3090, -14.5320, -11.9720

Square

The Square scheme is like the rectangle color scheme, but the four colors are evenly spaced on the color wheel.



180.7040, 21.6850, 8.9890



176.8190, 10.4550, -7.7610



173.2140, -24.3900, -9.5260



178.5830, -11.6470, 7.3370

Rectangle

The Rectangle color scheme consists of four colors that form a rectangle on the color wheel.



180.7040, 21.6850, 8.9890



178.9070, 22.1910, -0.1850



173.2140, -24.3900, -9.5260



175.5980, -25.1710, -0.8750

Sweetspot

The Sweet Spot groups the original color and five complimentary colors.



180.7040, 21.6850, 8.9890



244.5990, 8.6190, 3.4910



183.7970, 8.6620, 19.2380



121.6910, 5.3640, 1.9080



0.0000, 0.0000, 0.0000



128.0000, -0.0000, -0.0000

Same Dimension

The Same Dimension uses a secret algorithm to generate beautiful new colors.



180.7040, 21.6850, 8.9890



216.2000, 32.0920, 13.1160



189.7540, 18.2480, -0.3120



97.4030, 6.2350, 2.6430



51.7140, 95.9550, 39.6590



12.6010, 23.4730, 9.6250

Inverse Universe

The Inverse Universe completely reimagines the original color for something new.



180.7040, 21.6850, 8.9890



216.2000, 32.0920, 13.1160



186.2460, -18.2480, 0.3120



97.4030, 6.2350, 2.6430



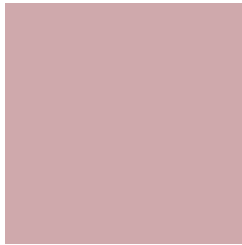
51.7140, 95.9550, 39.6590



12.6010, 23.4730, 9.6250

Previews

White Background



This preview shows how the YIQ color 180.7040, 21.6850, 8.9890 looks on a white background.

Color Contrast Check

Large Text (above 18pt) WCAG AA × Fail

Any Text WCAG AA × Fail

Large Text (above 18pt) WCAG AAA × Fail

Any Text WCAG AAA × Fail

Black Background



This preview shows how the YIQ color 180.7040, 21.6850, 8.9890 looks on a black background.

Color Contrast Check

Large Text (above 18pt) WCAG AA ✓ Pass

Any Text WCAG AA ✓ Pass

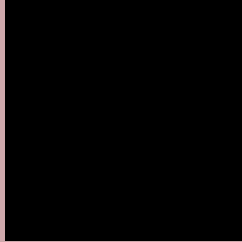
Large Text (above 18pt) WCAG AAA ✓ Pass

Any Text WCAG AAA ✓ Pass

If you want to check with other color combinations, try the [Color Contrast Checker](#).

YIQ 180.7040, 21.6850, 8.9890

Background



This preview shows how black text looks on a background with the YIQ color 180.7040, 21.6850, 8.9890.



This preview shows how white text looks on a background with the YIQ color 180.7040, 21.6850,

8.9890.

Color Blindness Simulation

Color vision deficiency is a very complex topic, and I could not describe the different causes any better than Wikipedia does, so if you want to learn more, you should check out their [article about color blindness](#).

Dichromacy



Original Color

180.7040, 21.6850, 8.9890

Protanopia

179.0820, 2.7050, 0.5370

Deuteranopia

179.6600, 15.8170, 5.2010



Tritanopia

181.4420, 19.6670, 12.5230

Trichromacy



Original Color

180.7040, 21.6850, 8.9890

Protanomaly

179.7840, 9.5360, 3.3920

Deuteranomaly

179.9700, 17.8800, 6.3600

Tritanomaly

181.1000, 20.6300, 11.5900

Monochromacy



Original Color

180.7040, 21.6850, 8.9890

Achromatopsia

181.0000, -0.0000, 0.0000

Achromatomaly

181.0010, 7.4270, 3.0670

CSS Examples

Text

The CSS property to change the color of the text to YIQ 180.7040, 21.6850, 8.9890 is called "color". The color property can be set on classes, ids or directly on the HTML element.

This example shows how text in the color `rgb(207, 169, 172)` looks like.

```
.text, #text, p{  
    color:rgb(207, 169, 172)  
}
```

If you want to add a text shadow in that color use the text-shadow property, you can generate a text shadow directly with our [CSS Text Shadow Generator](#).

Here you see how black text with a 4 pixel rgb(207, 169, 172) colored shadow looks like.

```
.shadow{ text-shadow: 4px 4px 2px rgb(207, 169, 172) }
```

Border

The CSS property to change the border of an element to YIQ 180.7040, 21.6850, 8.9890 is called "border". The border property can be set on classes, ids or directly on the HTML element.

This example shows the color as border, it can be applied via the CSS property "border" or "border-color".

```
.border, #border, table{ border:4px solid rgb(207, 169, 172) }
```


If only the border color should be changed use the property `border-color`.

```
.border{ border-color:rgb(207, 169, 172) }
```

If you want to add a box shadow in that color use:

Here you see how a box with a 4 pixel `rgb(207, 169, 172)` colored shadow looks like.

```
.boxshadow{ -moz-box-shadow:4px 4px 4px  
4px rgb(207, 169, 172); -webkit-box-  
shadow:4px 4px 4px 4px rgb(207, 169, 172);  
box-shadow:4px 4px 4px 4px rgb(207, 169,  
172) }
```

Background

The CSS property to change the background color of an element to YIQ 180.7040, 21.6850, 8.9890 is called "background". The background property can be set on classes, ids or directly on the HTML element.

```
.background, #background, body{  
background: rgb(207, 169, 172) }
```

If only the background color should be changed can be used:

```
.background{ background-color: rgb(207,  
169, 172) }
```

This example shows the color as background, it is applied via the CSS property "background".

To optimize and compress your CSS code, you can use our [online CSS compressor and optimizer](#) based on csstidy. If you want to create a linear or radial gradient as background or border, check our [CSS Gradient Generator](#).

Hey! You found this booklet interesting? Support Converting Colors with the new Membership Option!

The pro membership hides all ads, plus gives you double the colors in the color bucket, and more awesome pro features!

[Learn more, Memberships starting at \\$2.50/m!](#)

**Follow me
on Twitter!**

@ConvertingColor