

Converting Colors

YIQ(180.7920, 41.4480, -2.2640)

Have a look what the booklet for
YIQ(180.7920, 41.4480, -2.2640)
contains.

YIQ(180.7920, 41.4480, -2.2640)	3
<i>Conversions</i>	4
<i>Details</i>	6
<i>Harmonies</i>	12
<i>Previews</i>	24
<i>Color Blindness Simulation</i>	28
<i>CSS Examples</i>	31

Color

**YIQ(180.7920, 41.4480,
-2.2640)**

Conversions

Conversions Part 1

Format	Color
Hex	DBAB83
RGB	219, 171, 131
RGB Percent	86%, 67%, 51%
CMY	0.1411, 0.3295, 0.4861
CMYK	0.00, 0.22, 0.40, 0.14
HSL	27°, 55%, 69%
HSV	27°, 40%, 86%
XYZ	47.8795, 45.8218, 27.8114
YIQ	180.7920, 41.4480, -2.2640

Conversions

Conversions Part 2

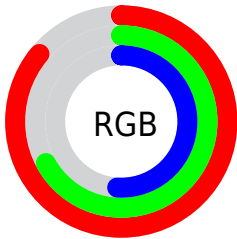
Format	Color
RYB	219, 204, 131
Decimal	14396291
CIELab	73.43, 12.37, 27.29
CIELCh	73, 29.963, 65.626
Yxy	45.8218, 0.3940, 0.3771
Android (android.graphics.Color)	4292586371 (0xFFDBAB83)
YUV	180.7920, -24.5475, 33.5084
Hunter-Lab	67.6918, 7.7952, 23.0248

Details

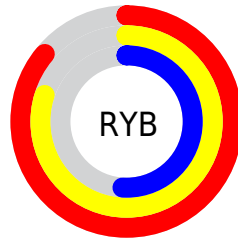
The YIQ color **180.7920, 41.4480, -2.2640** is a light color, and the websafe version is hex **CC9966**. A complement of this color would be **169.2080, -41.4480, 2.2640**, and the grayscale version is **181.0000, -0.0000, 0.0000**.

A 20% lighter version of the original color is **229.8830, 30.7660, -6.9140**, and **127.5250, 37.8260, -2.7020** is the 20% darker color. If you saturate the color by 10%, you get **171.2400, 51.8100, -2.8300**, and if you desaturate by 10%, it is **190.3440, 31.0860, -1.6980**.

Distribution



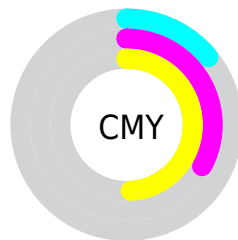
- Red (86%)
- Green (67%)
- Blue (51%)



- Red (86%)
- Yellow (80%)
- Blue (51%)



- Cyan (0%)
- Magenta (22%)
- Yellow (40%)
- Black (14%)



- Cyan (14%)
- Magenta (33%)
- Yellow (49%)

Brightness & Saturation Gradients

These gradients show how the YIQ color 180.7920, 41.4480, -2.2640 changes by changing the brightness by 10 percent. The first figure shows a shift by +10% for each color and the second figure -10%.

Similar to the brightness gradients but the following saturation gradients show a change of the YIQ color 180.7920, 41.4480, -2.2640 by changing the saturation by 10% instead.

180.7920, 41.4480,
-2.2640

180.7920, 41.4480,
-2.2640

255.0000, -0.0000,
-0.0000

153.4220, 39.6140,
-2.0660

229.8830, 30.7660,
-6.9140

127.5250, 37.8260,
-2.7020

250.0980, 13.8030,
-13.3730

102.1550, 35.9920,
-2.5040

253.4040, 4.4940,
-4.3540

77.3720, 33.8830,
-2.8290

54.2900, 31.1780,
-3.3660

32.8920, 26.5470,
-2.0370

11.3400, 19.7140,

6.1620

■ 0.0000, 0.0000,
0.0000

■ 180.7920, 41.4480,
-2.2640

■ 180.7920, 41.4480,
-2.2640

■ 171.2400, 51.8100,
-2.8300

■ 190.3440, 31.0860,
-1.6980

■ 161.6880, 62.1720,
-3.3960

■ 199.8960, 20.7240,
-1.1320

■ 152.1360, 72.5340,
-3.9620

■ 209.4480, 10.3620,
-0.5660

■ 142.5840, 82.8960,
-4.5280

■ 219.0000, 0.0000,
-0.0000

■ 133.1460, 92.9370,
-4.7830

■ 228.5520,
-10.3620, 0.5660

■ 123.5940,
103.2990, -5.3490

■ 237.1920,
-18.1560, -1.3560

■ 244.2360,
-21.4560, -7.6320

Harmonies

Analogous

The Analogous color harmony consists of three colors that are next to each other on the color wheel.



182.4480, 45.8930, 10.7970



180.7920, 41.4480, -2.2640



178.3290, 26.2740, -13.6140

Triad

The Triadic color harmony groups three colors that are evenly spaced from another and form a triangle on the color wheel.



180.7920, 41.4480, -2.2640



167.5370, -50.7050, -22.7130



183.1360, -5.4140, 21.0340

Complementary

The Complementary color scheme is a pair of colors which are on the opposite of each other on the color wheel.



180.7920, 41.4480, -2.2640



169.2080, -41.4480, 2.2640

Split Complementary

Split-complementary colors differ from the complementary color scheme. The scheme consists of three colors, the original color and two neighbors of the complement color.



178.7840, -34.0220, 10.8580



180.7920, 41.4480, -2.2640



166.0380, -65.0570, -15.9130

Square

The Square scheme is like the rectangle color scheme, but the four colors are evenly spaced on the color wheel.



180.7920, 41.4480, -2.2640



171.5430, -24.4790, -24.4390



171.2490, -57.8610, -3.1490



184.7170, 20.8110, 24.8350

Rectangle

The Rectangle color scheme consists of four colors that form a rectangle on the color wheel.



180.7920, 41.4480, -2.2640



176.3270, 11.4200, -19.7480



171.2490, -57.8610, -3.1490



182.4660, -15.2710, 17.9530

Sweetspot

The Sweet Spot groups the original color and five complimentary colors.



180.7920, 41.4480, -2.2640



241.4870, 14.6260, -0.7500



162.7840, 37.0400, 33.5840



120.0780, 8.5280, -0.3680



0.0000, 0.0000, 0.0000



128.0000, -0.0000, -0.0000

Same Dimension

The Same Dimension uses a secret algorithm to generate beautiful new colors.



180.7920, 41.4480, -2.2640



201.7630, 57.5870, -2.9010



206.6200, 29.3480, -25.2760



105.2240, 5.1810, -0.2830



98.1000, 81.3830, -4.6410



26.0810, 21.6410, -1.2310

Inverse Universe

The Inverse Universe completely reimagines the original color for something new.



169.2080, -41.4480, 2.2640



185.6500, -57.3120, 3.4240



143.3800, -29.3480, 25.2760



103.7760, -5.1810, 0.2830



75.4870, -81.6580, 4.1180



19.9190, -21.6410, 1.2310

Previews

White Background



This preview shows how the YIQ color 180.7920, 41.4480, -2.2640 looks on a white background.

Color Contrast Check

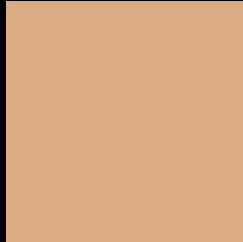
Large Text (above 18pt) WCAG AA × Fail

Any Text WCAG AA × Fail

Large Text (above 18pt) WCAG AAA × Fail

Any Text WCAG AAA × Fail

Black Background



This preview shows how the YIQ color 180.7920, 41.4480, -2.2640 looks on a black background.

Color Contrast Check

Large Text (above 18pt) WCAG AA ✓ Pass

Any Text WCAG AA ✓ Pass

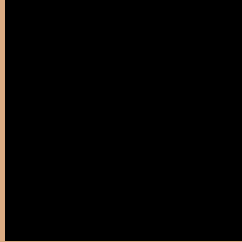
Large Text (above 18pt) WCAG AAA ✓ Pass

Any Text WCAG AAA ✓ Pass

If you want to check with other color combinations, try the [Color Contrast Checker](#).

YIQ 180.7920, 41.4480, -2.2640

Background



This preview shows how black text looks on a background with the YIQ color 180.7920, 41.4480, -2.2640.



This preview shows how white text looks on a background with the YIQ color 180.7920, 41.4480,

-2.2640.

Color Blindness Simulation

Color vision deficiency is a very complex topic, and I could not describe the different causes any better than Wikipedia does, so if you want to learn more, you should check out their [article about color blindness](#).

Dichromacy



Original Color

180.7920, 41.4480, -2.2640

Protanopia

179.0560, 22.7890, -11.0270

Deuteranopia

180.4710, 37.9180, -4.3700



Tritanopia

184.0090, 31.3120, 16.2400

Trichromacy



Original Color

180.7920, 41.4480, -2.2640

Protanomaly

179.8720, 29.2990, -7.8610

Deuteranomaly

180.4820, 39.3850, -3.4230

Tritanomaly

182.6470, 35.0270, 9.4830

Monochromacy



Original Color

180.7920, 41.4480, -2.2640

Achromatopsia

181.0000, -0.0000, 0.0000

Achromatomaly

180.7860, 15.2220, -0.5380

CSS Examples

Text

The CSS property to change the color of the text to YIQ 180.7920, 41.4480, -2.2640 is called "color". The color property can be set on classes, ids or directly on the HTML element.

This example shows how text in the color `rgb(219, 171, 131)` looks like.

```
.text, #text, p{  
    color:rgb(219, 171, 131)  
}
```

If you want to add a text shadow in that color use the text-shadow property, you can generate a text shadow directly with our [CSS Text Shadow Generator](#).

Here you see how black text with a 4 pixel rgb(219, 171, 131) colored shadow looks like.

```
.shadow{ text-shadow: 4px 4px 2px rgb(219, 171, 131) }
```

Border

The CSS property to change the border of an element to YIQ 180.7920, 41.4480, -2.2640 is called "border". The border property can be set on classes, ids or directly on the HTML element.

This example shows the color as border, it can be applied via the CSS property "border" or "border-color".

```
.border, #border, table{ border:4px solid rgb(219, 171, 131) }
```


If only the border color should be changed use the property `border-color`.

```
.border{ border-color:rgb(219, 171, 131) }
```

If you want to add a box shadow in that color use:

Here you see how a box with a 4 pixel `rgb(219, 171, 131)` colored shadow looks like.

```
.boxshadow{ -moz-box-shadow:4px 4px 4px  
4px rgb(219, 171, 131); -webkit-box-  
shadow:4px 4px 4px 4px rgb(219, 171, 131);  
box-shadow:4px 4px 4px 4px rgb(219, 171,  
131) }
```

Background

The CSS property to change the background color of an element to YIQ 180.7920, 41.4480, -2.2640 is called "background". The background property can be set on classes, ids or directly on the HTML element.

```
.background, #background, body{  
background: rgb(219, 171, 131) }
```

If only the background color should be changed can be used:

```
.background{ background-color: rgb(219,  
171, 131) }
```

This example shows the color as background, it is applied via the CSS property "background".

To optimize and compress your CSS code, you can use our [online CSS compressor and optimizer](#) based on csstidy. If you want to create a linear or radial gradient as background or border, check our [CSS Gradient Generator](#).

Hey! You found this booklet interesting? Support Converting Colors with the new Membership Option!

The pro membership hides all ads, plus gives you double the colors in the color bucket, and more awesome pro features!

[Learn more, Memberships starting at \\$2.50/m!](#)

**Follow me
on Twitter!**

@ConvertingColor