

# Converting Colors

YIQ(181.2510, 9.7190, 5.5830)

Have a look what the booklet for  
YIQ(181.2510, 9.7190, 5.5830)  
contains.

<b>YIQ(181.2510, 9.7190, 5.5830)</b> .....	3
<b><i>Conversions</i></b> .....	4
<b><i>Details</i></b> .....	6
<b><i>Harmonies</i></b> .....	12
<b><i>Previews</i></b> .....	24
<b><i>Color Blindness Simulation</i></b> .....	28
<b><i>CSS Examples</i></b> .....	31

# Color

**YIQ(181.2510, 9.7190,  
5.5830)**

# Conversions

## Conversions Part 1

<b>Format</b>	<b>Color</b>
Hex	C2AFB4
RGB	194, 175, 180
RGB Percent	76%, 69%, 71%
CMY	0.2392, 0.3137, 0.2941
CMYK	0.00, 0.10, 0.07, 0.24
HSL	344°, 13%, 72%
HSV	344°, 10%, 76%
XYZ	45.8188, 45.4235, 49.5374
YIQ	181.2510, 9.7190, 5.5830

# Conversions

## Conversions Part 2

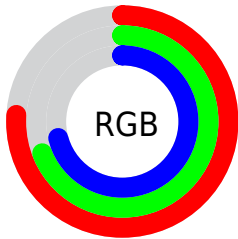
<b>Format</b>	<b>Color</b>
<b>RYB</b>	194, 175, 180
Decimal	12758964
CIELab	73.17, 7.69, -0.08
CIELCh	73, 7.695, 359.391
Yxy	45.4235, 0.3255, 0.3227
Android (android.graphics.Color)	4290949044 (0xFFC2AFB4)
YUV	181.2510, -0.6167, 11.1809
Hunter-Lab	67.3969, 3.4061, 3.5991

# Details

The YIQ color **181.2510, 9.7190, 5.5830** is a light color, and the websafe version is hex **CCCCCC**. A complement of this color would be **187.7490, -9.7190, -5.5830**, and the grayscale version is **181.0000, -0.0000, 0.0000**.

A 20% lighter version of the original color is **237.5500, 10.3150, 5.7950**, and **128.5390, 8.8480, 4.8480** is the 20% darker color. If you saturate the color by 10%, you get **168.5020, 19.4380, 11.1660**, and if you desaturate by 10%, it is **194.0000, -0.0000, 0.0000**.

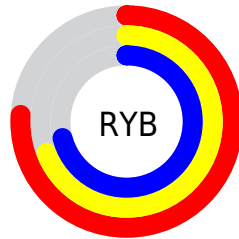
# Distribution



Red (76%)

Green (69%)

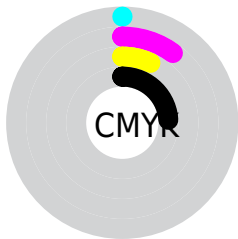
Blue (71%)



Red (76%)

Yellow (69%)

Blue (71%)

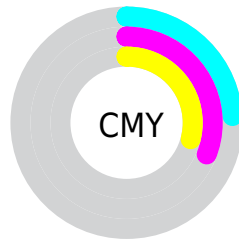


Cyan (0%)

Magenta (10%)

Yellow (7%)

Black (24%)



Cyan (24%)

Magenta (31%)

Yellow (29%)

# Brightness & Saturation Gradients

These gradients show how the YIQ color 181.2510, 9.7190, 5.5830 changes by changing the brightness by 10 percent. The first figure shows a shift by +10% for each color and the second figure -10%.

Similar to the brightness gradients but the following saturation gradients show a change of the YIQ color 181.2510, 9.7190, 5.5830 by changing the saturation by 10% instead.



■ 181.2510, 9.7190,  
5.5830

■ 181.2510, 9.7190,  
5.5830

255.0000, -0.0000,  
-0.0000

■ 154.2510, 9.7190,  
5.5830

■ 237.5500, 10.3150,  
5.7950

■ 128.5390, 8.8480,  
4.8480

■ 103.5390, 8.8480,  
4.8480

■ 79.2400, 8.2520,  
4.6360

■ 56.3540, 7.9310,  
4.9470

■ 34.6420, 7.0600,  
4.2120

■ 12.3650, 9.3980,

5.8940

0.0000, 0.0000,  
0.0000

181.2510, 9.7190,  
5.5830

181.2510, 9.7190,  
5.5830

168.5020, 19.4380,  
11.1660

194.0000, -0.0000,  
0.0000

155.0520, 29.7530,  
16.9610

207.4500,  
-10.3150, -5.7950

142.3030, 39.4720,  
22.5440

220.1990,  
-20.0340, -11.3780

128.9670, 49.4660,  
28.6500

233.5350,  
-30.0280, -17.4840

116.2180, 59.1850,  
34.2330

236.3050,  
-35.0720, -14.1760

■ 103.3550, 69.2250,  
39.5050

■ 236.7610,  
-36.3560, -12.9320

■ 90.0190, 79.2190,  
45.6110

■ 77.2700, 88.9380,  
51.1940

■ 63.8200, 99.2530,  
56.9890

# Harmonies

## Analogous

The Analogous color harmony consists of three colors that are next to each other on the color wheel.



181.1410, 4.2170, 6.1770



181.2510, 9.7190, 5.5830



180.7520, 12.5620, 3.6180

# Triad

The Triadic color harmony groups three colors that are evenly spaced from another and form a triangle on the color wheel.



181.2510, 9.7190, 5.5830



178.5070, 2.7060, -4.9900



177.9430, -13.0210, -0.8050

# Complementary

The Complementary color scheme is a pair of colors which are on the opposite of each other on the color wheel.



181.2510, 9.7190, 5.5830



187.7490, -9.7190, -5.5830

# Split Complementary

Split-complementary colors differ from the complementary color scheme. The scheme consists of three colors, the original color and two neighbors of the complement color.



177.6500, -13.7540, -4.0420



181.2510, 9.7190, 5.5830



177.8590, -4.2170, -6.1770

# Square

The Square scheme is like the rectangle color scheme, but the four colors are evenly spaced on the color wheel.



181.2510, 9.7190, 5.5830



179.6110, 8.3450, -2.5590



177.4500, -10.3150, -5.7950



179.2040, -9.2620, 2.6580



# Rectangle

The Rectangle color scheme consists of four colors that form a rectangle on the color wheel.



181.2510, 9.7190, 5.5830



180.5840, 12.9750, 1.6390



177.4500, -10.3150, -5.7950



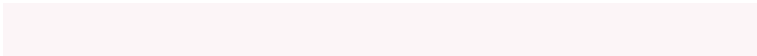
178.1170, -13.5710, -1.8510

# Sweetspot

The Sweet Spot groups the original color and five complimentary colors.



181.2510, 9.7190, 5.5830



247.3210, 3.5300, 2.1060



181.3520, 2.2450, 8.8770



124.0220, 2.9340, 1.8940



0.0000, 0.0000, 0.0000



128.0000, -0.0000, -0.0000



# Same Dimension

The Same Dimension uses a secret algorithm to generate beautiful new colors.



181.2510, 9.7190, 5.5830



231.8820, 15.3120, 8.8480



183.0290, 10.2240, 1.9360



90.3320, 4.9970, 3.0530



52.9270, 82.4740, 47.1940



10.8930, 16.7790, 9.7950



# Inverse Universe

The Inverse Universe completely reimagines the original color for something new.



181.2510, 9.7190, 5.5830



231.8820, 15.3120, 8.8480



185.9710, -10.2240, -1.9360



90.3320, 4.9970, 3.0530



52.9270, 82.4740, 47.1940

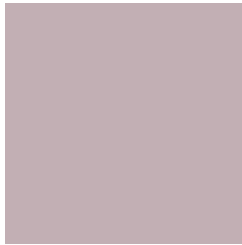


10.8930, 16.7790, 9.7950



# Previews

## White Background



This preview shows how the YIQ color 181.2510, 9.7190, 5.5830 looks on a white background.

## Color Contrast Check

Large Text (above 18pt) WCAG AA × Fail

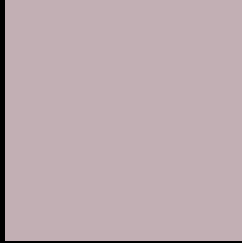
Any Text WCAG AA × Fail

Large Text (above 18pt) WCAG AAA × Fail

Any Text WCAG AAA × Fail



# Black Background



This preview shows how the YIQ color 181.2510, 9.7190, 5.5830 looks on a black background.

## Color Contrast Check

Large Text (above 18pt) WCAG AA ✓ Pass

Any Text WCAG AA ✓ Pass

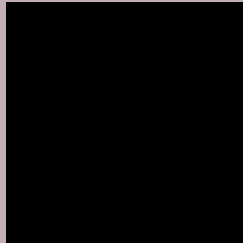
Large Text (above 18pt) WCAG AAA ✓ Pass

Any Text WCAG AAA ✓ Pass

If you want to check with other color combinations, try the [Color Contrast Checker](#).

**YIQ 181.2510, 9.7190, 5.5830**

## **Background**



This preview shows how black text looks on a background with the YIQ color 181.2510, 9.7190, 5.5830.



This preview shows how white text looks on a background with the YIQ color 181.2510, 9.7190,

5.5830.

# Color Blindness Simulation

Color vision deficiency is a very complex topic, and I could not describe the different causes any better than Wikipedia does, so if you want to learn more, you should check out their [article about color blindness](#).

## Dichromacy



### Original Color

181.2510, 9.7190, 5.5830

### Protanopia

180.2390, 0.8250, 1.5690

### Deuteranopia

181.5610, 11.7820, 6.7420



## Tritanopia

181.7610, 8.3430, 8.4950

# Trichromacy



## Original Color

181.2510, 9.7190, 5.5830

## Protanomaly

180.7340, 3.8050, 2.6290

## Deuteranomaly

181.2620, 11.1860, 6.5300

## Tritanomaly

181.4190, 9.3060, 7.5620

# Monochromacy



## Original Color

181.2510, 9.7190, 5.5830

## Achromatopsia

181.0000, -0.0000, 0.0000

## Achromatomaly

181.3210, 3.5300, 2.1060

# CSS Examples

## Text

The CSS property to change the color of the text to YIQ 181.2510, 9.7190, 5.5830 is called "color". The color property can be set on classes, ids or directly on the HTML element.

This example shows how text in the color `rgb(194, 175, 180)` looks like.

```
.text, #text, p{  
    color:rgb(194, 175, 180)  
}
```

If you want to add a text shadow in that color use the text-shadow property, you can generate a text shadow directly with our [CSS Text Shadow Generator](#).

Here you see how black text with a 4 pixel rgb(194, 175, 180) colored shadow looks like.

```
.shadow{ text-shadow: 4px 4px 2px rgb(194, 175, 180) }
```

## Border

The CSS property to change the border of an element to YIQ 181.2510, 9.7190, 5.5830 is called "border". The border property can be set on classes, ids or directly on the HTML element.

This example shows the color as border, it can be applied via the CSS property "border" or "border-color".

```
.border, #border, table{ border:4px solid rgb(194, 175, 180) }
```



If only the border color should be changed use the property `border-color`.

```
.border{ border-color:rgb(194, 175, 180) }
```

If you want to add a box shadow in that color use:

Here you see how a box with a 4 pixel `rgb(194, 175, 180)` colored shadow looks like.

```
.boxshadow{ -moz-box-shadow:4px 4px 4px  
4px rgb(194, 175, 180); -webkit-box-  
shadow:4px 4px 4px 4px rgb(194, 175, 180);  
box-shadow:4px 4px 4px 4px rgb(194, 175,  
180) }
```

# Background

The CSS property to change the background color of an element to YIQ 181.2510, 9.7190, 5.5830 is called "background". The background property can be set on classes, ids or directly on the HTML element.

```
.background, #background, body{  
background: rgb(194, 175, 180) }
```

If only the background color should be changed can be used:

```
.background{ background-color: rgb(194,  
175, 180) }
```

This example shows the color as background, it is applied via the CSS property "background".

To optimize and compress your CSS code, you can use our [online CSS compressor and optimizer](#) based on csstidy. If you want to create a linear or radial gradient as background or border, check our [CSS Gradient Generator](#).

Hey! You found this booklet interesting? Support Converting Colors with the new Membership Option!

The pro membership hides all ads, plus gives you double the colors in the color bucket, and more awesome pro features!

**[Learn more, Memberships starting at \\$2.50/m!](#)**

**Follow me  
on Twitter!**

@ConvertingColor