

Converting Colors

YIQ(181.8290, 22.8310, 10.2470)

Have a look what the booklet for
YIQ(181.8290, 22.8310, 10.2470)
contains.

YIQ(181.8290, 22.8310, 10.2470)	3
<i>Conversions</i>	4
<i>Details</i>	6
<i>Harmonies</i>	12
<i>Previews</i>	24
<i>Color Blindness Simulation</i>	28
<i>CSS Examples</i>	31

Color

**YIQ(181.8290, 22.8310,
10.2470)**

Conversions

Conversions Part 1

Format	Color
Hex	D2A9AE
RGB	210, 169, 174
RGB Percent	82%, 66%, 68%
CMY	0.1764, 0.3373, 0.3176
CMYK	0.00, 0.20, 0.17, 0.18
HSL	353°, 31%, 74%
HSV	353°, 20%, 82%
XYZ	48.4126, 45.1318, 46.2154
YIQ	181.8290, 22.8310, 10.2470

Conversions

Conversions Part 2

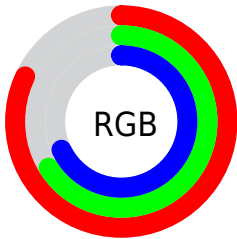
Format	Color
RYB	210, 169, 174
Decimal	13805998
CIELab	72.98, 15.78, 3.11
CIELCh	73, 16.084, 11.137
Yxy	45.1318, 0.3464, 0.3229
Android (android.graphics.Color)	4291996078 (0xFFD2A9AE)
YUV	181.8290, -3.8597, 24.7060
Hunter-Lab	67.1802, 11.0684, 6.2387

Details

The YIQ color **181.8290, 22.8310, 10.2470** is a light color, and the websafe version is hex **CC9999**. A complement of this color would be **197.1710, -22.8310, -10.2470**, and the grayscale version is **182.0000, -0.0000, -0.0000**.

A 20% lighter version of the original color is **233.8390, 16.8710, 8.1270**, and **128.9320, 21.0430, 9.6110** is the 20% darker color. If you saturate the color by 10%, you get **167.4500, 34.3840, 15.6320**, and if you desaturate by 10%, it is **196.2080, 11.2780, 4.8620**.

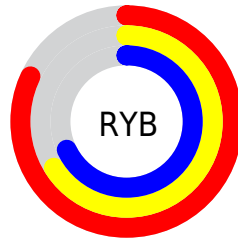
Distribution



Red (82%)

Green (66%)

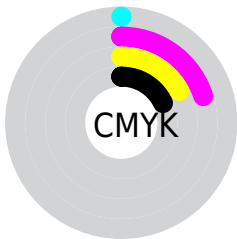
Blue (68%)



Red (82%)

Yellow (66%)

Blue (68%)

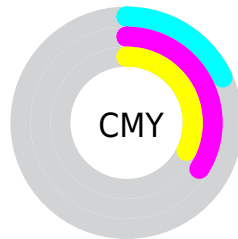


Cyan (0%)

Magenta (20%)

Yellow (17%)

Black (18%)



Cyan (18%)

Magenta (34%)

Yellow (32%)

Brightness & Saturation Gradients

These gradients show how the YIQ color 181.8290, 22.8310, 10.2470 changes by changing the brightness by 10 percent. The first figure shows a shift by +10% for each color and the second figure -10%.

Similar to the brightness gradients but the following saturation gradients show a change of the YIQ color 181.8290, 22.8310, 10.2470 by changing the saturation by 10% instead.

■ 181.8290, 22.8310,
10.2470

■ 181.8290, 22.8310,
10.2470

255.0000, -0.0000,
-0.0000

■ 154.5300, 22.2350,
10.0350

■ 233.8390, 16.8710,
8.1270

■ 128.9320, 21.0430,
9.6110

■ 253.8260, 0.5500,
1.0460

■ 103.6330, 20.4470,
9.3990

■ 79.0350, 19.2550,
8.9750

■ 56.1380, 17.4670,
8.3390

■ 33.9530, 16.5500,
8.4380

■ 10.9210, 19.5760,

8.6640

■ 0.0000, 0.0000,
0.0000

■ 181.8290, 22.8310,
10.2470

■ 181.8290, 22.8310,
10.2470

■ 167.4500, 34.3840,
15.6320

■ 196.2080, 11.2780,
4.8620

■ 152.9570, 46.2580,
20.7060

■ 210.7010, -0.5960,
-0.2120

■ 138.5780, 57.8110,
26.0910

■ 225.0800,
-12.1490, -5.5970

■ 124.0850, 69.6850,
31.1650

■ 239.5730,
-24.0230, -10.6710

■ 109.7060, 81.2380,
36.5500

■ 241.5450,
-26.8200, -9.5400

■ 95.2130, 93.1120,
41.6240

■ 80.8340, 104.6650,
47.0090

■ 66.4550, 116.2180,
52.3940

■ 65.7540, 116.8140,
52.6060

Harmonies

Analogous

The Analogous color harmony consists of three colors that are next to each other on the color wheel.



182.0330, 13.5690, 12.9050



181.8290, 22.8310, 10.2470



181.1080, 26.1790, 4.6350

Triad

The Triadic color harmony groups three colors that are evenly spaced from another and form a triangle on the color wheel.



181.8290, 22.8310, 10.2470



176.1380, -0.8690, -11.7890



176.4670, -26.1800, 0.8920

Complementary

The Complementary color scheme is a pair of colors which are on the opposite of each other on the color wheel.



181.8290, 22.8310, 10.2470



197.1710, -22.8310, -10.2470

Split Complementary

Split-complementary colors differ from the complementary color scheme. The scheme consists of three colors, the original color and two neighbors of the complement color.



174.7990, -30.3510, -6.1190



181.8290, 22.8310, 10.2470



174.7820, -14.4860, -12.8060

Square

The Square scheme is like the rectangle color scheme, but the four colors are evenly spaced on the color wheel.



181.8290, 22.8310, 10.2470



178.0750, 12.6100, -8.2700



173.7900, -26.1320, -10.9960



179.6150, -14.6730, 7.1110

Rectangle

The Rectangle color scheme consists of four colors that form a rectangle on the color wheel.



181.8290, 22.8310, 10.2470



179.8040, 23.9790, 0.4510



173.7900, -26.1320, -10.9960



176.1030, -28.1510, -1.9350

Sweetspot

The Sweet Spot groups the original color and five complimentary colors.



181.8290, 22.8310, 10.2470



244.7130, 8.2980, 3.8020



184.4380, 8.2950, 20.3830



121.8050, 5.0430, 2.2190



0.0000, 0.0000, 0.0000



128.0000, -0.0000, -0.0000

Same Dimension

The Same Dimension uses a secret algorithm to generate beautiful new colors.



181.8290, 22.8310, 10.2470



214.5530, 32.5960, 14.9960



190.0640, 20.3110, 0.8470



97.4030, 6.2350, 2.6430



52.6260, 93.3870, 42.1470



12.8290, 22.8310, 10.2470

Inverse Universe

The Inverse Universe completely reimagines the original color for something new.



181.8290, 22.8310, 10.2470



214.5530, 32.5960, 14.9960



188.9360, -20.3110, -0.8470



97.4030, 6.2350, 2.6430



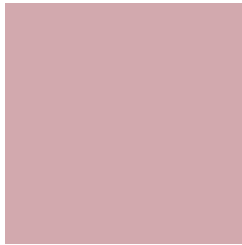
52.6260, 93.3870, 42.1470



12.8290, 22.8310, 10.2470

Previews

White Background



This preview shows how the YIQ color 181.8290, 22.8310, 10.2470 looks on a white background.

Color Contrast Check

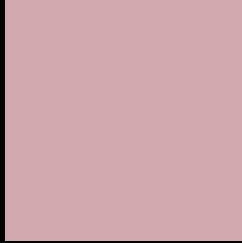
Large Text (above 18pt) WCAG AA × Fail

Any Text WCAG AA × Fail

Large Text (above 18pt) WCAG AAA × Fail

Any Text WCAG AAA × Fail

Black Background



This preview shows how the YIQ color 181.8290, 22.8310, 10.2470 looks on a black background.

Color Contrast Check

Large Text (above 18pt) WCAG AA ✓ Pass

Any Text WCAG AA ✓ Pass

Large Text (above 18pt) WCAG AAA ✓ Pass

Any Text WCAG AAA ✓ Pass

If you want to check with other color combinations, try the [Color Contrast Checker](#).

YIQ 181.8290, 22.8310, 10.2470

Background



This preview shows how black text looks on a background with the YIQ color 181.8290, 22.8310, 10.2470.



This preview shows how white text looks on a background with the YIQ color 181.8290, 22.8310,

Color Blindness Simulation

Color vision deficiency is a very complex topic, and I could not describe the different causes any better than Wikipedia does, so if you want to learn more, you should check out their [article about color blindness](#).

Dichromacy



Original Color

181.8290, 22.8310, 10.2470

Protanopia

179.3100, 2.0630, 1.1590

Deuteranopia

180.7740, 15.4960, 5.5120



Tritanopia

182.3390, 21.4550, 13.1590

Trichromacy



Original Color

181.8290, 22.8310, 10.2470

Protanomaly

180.3110, 9.4900, 4.2260

Deuteranomaly

181.3830, 18.1550, 6.8830

Tritanomaly

181.9970, 22.4180, 12.2260

Monochromacy



Original Color

181.8290, 22.8310, 10.2470

Achromatopsia

182.0000, -0.0000, -0.0000

Achromatomaly

181.7130, 8.2980, 3.8020

CSS Examples

Text

The CSS property to change the color of the text to YIQ 181.8290, 22.8310, 10.2470 is called "color". The color property can be set on classes, ids or directly on the HTML element.

This example shows how text in the color `rgb(210, 169, 174)` looks like.

```
.text, #text, p{  
    color:rgb(210, 169, 174)  
}
```

If you want to add a text shadow in that color use the text-shadow property, you can generate a text shadow directly with our [CSS Text Shadow Generator](#).

Here you see how black text with a 4 pixel rgb(210, 169, 174) colored shadow looks like.

```
.shadow{ text-shadow: 4px 4px 2px rgb(210, 169, 174) }
```

Border

The CSS property to change the border of an element to YIQ 181.8290, 22.8310, 10.2470 is called "border". The border property can be set on classes, ids or directly on the HTML element.

This example shows the color as border, it can be applied via the CSS property "border" or "border-color".

```
.border, #border, table{ border:4px solid rgb(210, 169, 174) }
```


If only the border color should be changed use the property `border-color`.

```
.border{ border-color:rgb(210, 169, 174) }
```

If you want to add a box shadow in that color use:

Here you see how a box with a 4 pixel `rgb(210, 169, 174)` colored shadow looks like.

```
.boxshadow{ -moz-box-shadow:4px 4px 4px  
4px rgb(210, 169, 174); -webkit-box-  
shadow:4px 4px 4px 4px rgb(210, 169, 174);  
box-shadow:4px 4px 4px 4px rgb(210, 169,  
174) }
```

Background

The CSS property to change the background color of an element to YIQ 181.8290, 22.8310, 10.2470 is called "background". The background property can be set on classes, ids or directly on the HTML element.

```
.background, #background, body{  
background: rgb(210, 169, 174) }
```

If only the background color should be changed can be used:

```
.background{ background-color: rgb(210,  
169, 174) }
```

This example shows the color as background, it is applied via the CSS property "background".

To optimize and compress your CSS code, you can use our [online CSS compressor and optimizer](#) based on csstidy. If you want to create a linear or radial gradient as background or border, check our [CSS Gradient Generator](#).

Hey! You found this booklet interesting? Support Converting Colors with the new Membership Option!

The pro membership hides all ads, plus gives you double the colors in the color bucket, and more awesome pro features!

[Learn more, Memberships starting at \\$2.50/m!](#)

**Follow me
on Twitter!**

@ConvertingColor