

Converting Colors

YIQ(182.5970, 20.1280, -1.3440)

Have a look what the booklet for
YIQ(182.5970, 20.1280, -1.3440)
contains.

YIQ(182.5970, 20.1280, -1.3440)	3
<i>Conversions</i>	4
<i>Details</i>	6
<i>Harmonies</i>	12
<i>Previews</i>	24
<i>Color Blindness Simulation</i>	28
<i>CSS Examples</i>	31

Color

**YIQ(182.5970, 20.1280,
-1.3440)**

Conversions

Conversions Part 1

Format	Color
Hex	C9B29E
RGB	201, 178, 158
RGB Percent	79%, 70%, 62%
CMY	0.2117, 0.3020, 0.3803
CMYK	0.00, 0.11, 0.21, 0.21
HSL	28°, 28%, 70%
HSV	28°, 21%, 79%
XYZ	46.1824, 46.7254, 38.9436
YIQ	182.5970, 20.1280, -1.3440

Conversions

Conversions Part 2

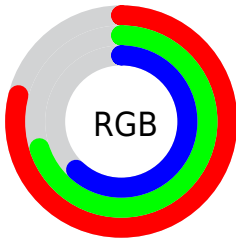
Format	Color
R_{YB}	201, 195, 158
Decimal	13218462
CIE _{Lab}	74.01, 5.09, 13.23
CIE _{LCh}	74, 14.175, 68.950
Yxy	46.7254, 0.3503, 0.3544
Android (android.graphics.Color)	4291408542 (0xFFC9B29E)
YUV	182.5970, -12.1263, 16.1394
Hunter-Lab	68.3560, 0.9746, 14.0707

Details

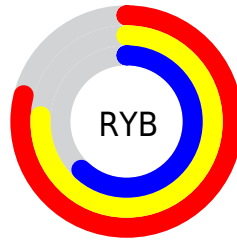
The YIQ color **182.5970, 20.1280, -1.3440** is a light color, and the websafe version is hex **CCCCCC**. A complement of this color would be **176.4030, -20.1280, 1.3440**, and the grayscale version is **183.0000, -0.0000, -0.0000**.

A 20% lighter version of the original color is **237.8850, 19.2570, -2.0790**, and **129.5260, 18.8900, -0.9340** is the 20% darker color. If you saturate the color by 10%, you get **173.8600, 29.5730, -1.8110**, and if you desaturate by 10%, it is **191.3340, 10.6830, -0.8770**.

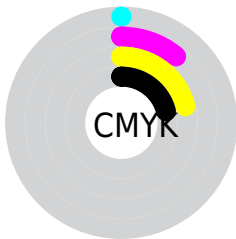
Distribution



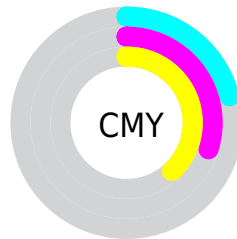
- Red (79%)
- Green (70%)
- Blue (62%)



- Red (79%)
- Yellow (76%)
- Blue (62%)



- Cyan (0%)
- Magenta (11%)
- Yellow (21%)
- Black (21%)



- Cyan (21%)
- Magenta (30%)
- Yellow (38%)

Brightness & Saturation Gradients

These gradients show how the YIQ color 182.5970, 20.1280, -1.3440 changes by changing the brightness by 10 percent. The first figure shows a shift by +10% for each color and the second figure -10%.

Similar to the brightness gradients but the following saturation gradients show a change of the YIQ color 182.5970, 20.1280, -1.3440 by changing the saturation by 10% instead.

■ 182.5970, 20.1280,
-1.3440

■ 182.5970, 20.1280,
-1.3440

255.0000, -0.0000,
-0.0000

■ 155.4120, 19.2110,
-1.2450

■ 237.8850, 19.2570,
-2.0790

■ 129.5260, 18.8900,
-0.9340

■ 253.4040, 4.4940,
-4.3540

■ 103.9280, 17.6980,
-1.3580

■ 80.3300, 16.5060,
-1.7820

■ 57.2590, 15.2680,
-1.3720

■ 35.6610, 14.0760,
-1.7960

■ 13.9430, 13.3420,

0.4940

0.0000, 0.0000,
0.0000

182.5970, 20.1280,
-1.3440

182.5970, 20.1280,
-1.3440

173.8600, 29.5730,
-1.8110

191.3340, 10.6830,
-0.8770

165.1230, 39.0180,
-2.2780

200.0710, 1.2380,
-0.4100

156.9730, 48.1880,
-3.2680

208.2210, -7.9320,
0.5800

148.2360, 57.6330,
-3.7350

216.9580,
-17.3770, 1.0470

139.4990, 67.0780,
-4.2020

225.3530,
-25.8590, 0.5810

■ 130.6480, 76.8440,
-4.9800

■ 231.8100,
-28.8840, -5.1720

■ 122.4980, 86.0140,
-5.9700

■ 237.6800,
-31.6340, -10.4020

■ 114.6900, 94.2210,
-6.0270

■ 238.8540,
-32.1840, -11.4480

Harmonies

Analogous

The Analogous color harmony consists of three colors that are next to each other on the color wheel.



184.1400, 23.1530, 4.4090



182.5970, 20.1280, -1.3440



180.8300, 11.9220, -6.8140

Triad

The Triadic color harmony groups three colors that are evenly spaced from another and form a triangle on the color wheel.



182.5970, 20.1280, -1.3440



177.4700, -22.2350, -10.0350



183.4380, -0.8730, 10.3190

Complementary

The Complementary color scheme is a pair of colors which are on the opposite of each other on the color wheel.



182.5970, 20.1280, -1.3440



176.4030, -20.1280, 1.3440

Split Complementary

Split-complementary colors differ from the complementary color scheme. The scheme consists of three colors, the original color and two neighbors of the complement color.



182.1590, -13.3890, 5.8670



182.5970, 20.1280, -1.3440



178.0660, -26.7290, -5.6810

Square

The Square scheme is like the rectangle color scheme, but the four colors are evenly spaced on the color wheel.



182.5970, 20.1280, -1.3440



178.3910, -11.8270, -11.4350



179.9080, -23.1080, 0.2840



184.4240, 10.9100, 11.5340

Rectangle

The Rectangle color scheme consists of four colors that form a rectangle on the color wheel.



182.5970, 20.1280, -1.3440



180.2420, 4.7700, -9.3580



179.9080, -23.1080, 0.2840



183.4590, -5.3660, 9.1460

Sweetspot

The Sweet Spot groups the original color and five complimentary colors.



182.5970, 20.1280, -1.3440



248.5940, 7.0150, -0.4810



173.5930, 17.9240, 16.5800



124.0390, 4.2640, -0.1840



0.0000, 0.0000, 0.0000



128.0000, -0.0000, -0.0000

Same Dimension

The Same Dimension uses a secret algorithm to generate beautiful new colors.



182.5970, 20.1280, -1.3440



226.9310, 30.8110, -2.2210



194.9240, 14.3530, -12.3270



95.0390, 4.2640, -0.1840



93.3490, 76.2480, -5.1920



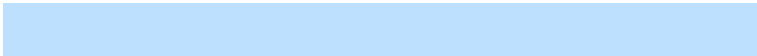
20.7430, 16.7810, -1.2590

Inverse Universe

The Inverse Universe completely reimagines the original color for something new.



176.4030, -20.1280, 1.3440



217.0690, -30.8110, 2.2210



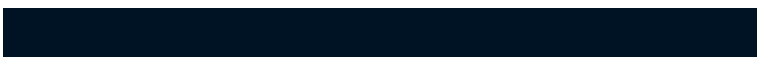
164.0760, -14.3530, 12.3270



93.9610, -4.2640, 0.1840



69.6510, -76.2480, 5.1920



15.2570, -16.7810, 1.2590

Previews

White Background



This preview shows how the YIQ color 182.5970, 20.1280, -1.3440 looks on a white background.

Color Contrast Check

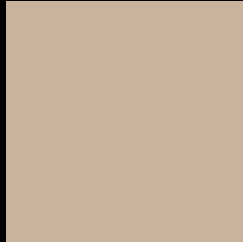
Large Text (above 18pt) WCAG AA × Fail

Any Text WCAG AA × Fail

Large Text (above 18pt) WCAG AAA × Fail

Any Text WCAG AAA × Fail

Black Background



This preview shows how the YIQ color 182.5970, 20.1280, -1.3440 looks on a black background.

Color Contrast Check

Large Text (above 18pt) WCAG AA ✓ Pass

Any Text WCAG AA ✓ Pass

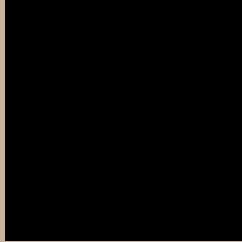
Large Text (above 18pt) WCAG AAA ✓ Pass

Any Text WCAG AAA ✓ Pass

If you want to check with other color combinations, try the [Color Contrast Checker](#).

YIQ 182.5970, 20.1280, -1.3440

Background



This preview shows how black text looks on a background with the YIQ color 182.5970, 20.1280, -1.3440.



This preview shows how white text looks on a background with the YIQ color 182.5970, 20.1280,

-1.3440.

Color Blindness Simulation

Color vision deficiency is a very complex topic, and I could not describe the different causes any better than Wikipedia does, so if you want to learn more, you should check out their [article about color blindness](#).

Dichromacy



Original Color

182.5970, 20.1280, -1.3440

Protanopia

181.8840, 11.8300, -5.1460

Deuteranopia

183.0430, 24.8040, 2.0200



Tritanopia

184.7510, 14.3030, 10.6150

Trichromacy



Original Color

182.5970, 20.1280, -1.3440

Protanomaly

182.3790, 14.8100, -4.0860

Deuteranomaly

182.7330, 22.7410, 0.8610

Tritanomaly

183.7850, 16.9630, 6.4590

Monochromacy



Original Color

182.5970, 20.1280, -1.3440

Achromatopsia

183.0000, -0.0000, -0.0000

Achromatomaly

182.8930, 7.6110, -0.2690

CSS Examples

Text

The CSS property to change the color of the text to YIQ 182.5970, 20.1280, -1.3440 is called "color". The color property can be set on classes, ids or directly on the HTML element.

This example shows how text in the color `rgb(201, 178, 158)` looks like.

```
.text, #text, p{  
    color:rgb(201, 178, 158)  
}
```

If you want to add a text shadow in that color use the text-shadow property, you can generate a text shadow directly with our [CSS Text Shadow Generator](#).

Here you see how black text with a 4 pixel rgb(201, 178, 158) colored shadow looks like.

```
.shadow{ text-shadow: 4px 4px 2px rgb(201, 178, 158) }
```

Border

The CSS property to change the border of an element to YIQ 182.5970, 20.1280, -1.3440 is called "border". The border property can be set on classes, ids or directly on the HTML element.

This example shows the color as border, it can be applied via the CSS property "border" or "border-color".

```
.border, #border, table{ border:4px solid rgb(201, 178, 158) }
```


If only the border color should be changed use the property `border-color`.

```
.border{ border-color:rgb(201, 178, 158) }
```

If you want to add a box shadow in that color use:

Here you see how a box with a 4 pixel `rgb(201, 178, 158)` colored shadow looks like.

```
.boxshadow{ -moz-box-shadow:4px 4px 4px  
4px rgb(201, 178, 158); -webkit-box-  
shadow:4px 4px 4px 4px rgb(201, 178, 158);  
box-shadow:4px 4px 4px 4px rgb(201, 178,  
158) }
```

Background

The CSS property to change the background color of an element to YIQ 182.5970, 20.1280, -1.3440 is called "background". The background property can be set on classes, ids or directly on the HTML element.

```
.background, #background, body{  
background: rgb(201, 178, 158) }
```

If only the background color should be changed can be used:

```
.background{ background-color: rgb(201,  
178, 158) }
```

This example shows the color as background, it is applied via the CSS property "background".

To optimize and compress your CSS code, you can use our [online CSS compressor and optimizer](#) based on csstidy. If you want to create a linear or radial gradient as background or border, check our [CSS Gradient Generator](#).

Hey! You found this booklet interesting? Support Converting Colors with the new Membership Option!

The pro membership hides all ads, plus gives you double the colors in the color bucket, and more awesome pro features!

[Learn more, Memberships starting at \\$2.50/m!](#)

**Follow me
on Twitter!**

@ConvertingColor