

Converting Colors

YIQ(182.6100, 10.0860, 4.4380)

Have a look what the booklet for
YIQ(182.6100, 10.0860, 4.4380)
contains.

YIQ(182.6100, 10.0860, 4.4380)	3
<i>Conversions</i>	4
<i>Details</i>	6
<i>Harmonies</i>	12
<i>Previews</i>	24
<i>Color Blindness Simulation</i>	28
<i>CSS Examples</i>	31

Color

**YIQ(182.6100, 10.0860,
4.4380)**

Conversions

Conversions Part 1

Format	Color
Hex	C3B1B3
RGB	195, 177, 179
RGB Percent	76%, 69%, 70%
CMY	0.2352, 0.3059, 0.2980
CMYK	0.00, 0.09, 0.08, 0.24
HSL	353°, 13%, 73%
HSV	353°, 9%, 76%
XYZ	46.3669, 46.3000, 49.1460
YIQ	182.6100, 10.0860, 4.4380

Conversions

Conversions Part 2

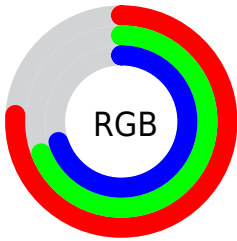
Format	Color
RYB	195, 177, 179
Decimal	12825011
CIELab	73.74, 6.80, 1.31
CIELCh	74, 6.920, 10.887
Yxy	46.3000, 0.3270, 0.3265
Android (android.graphics.Color)	4291015091 (0xFFC3B1B3)
YUV	182.6100, -1.7797, 10.8660
Hunter-Lab	68.0441, 2.5571, 4.8076

Details

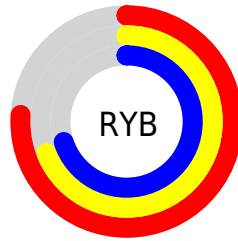
The YIQ color $182.6100, 10.0860, 4.4380$ is a light color, and the websafe version is hex `CCCCCC`. A complement of this color would be $189.3900, -10.0860, -4.4380$, and the grayscale version is $183.0000, -0.0000, -0.0000$.

A 20% lighter version of the original color is $238.9090, 10.6820, 4.6500$, and $129.3110, 9.4900, 4.2260$ is the 20% darker color. If you saturate the color by 10%, you get $168.9320, 21.0430, 9.6110$, and if you desaturate by 10%, it is $195.7010, -0.5960, -0.2120$.

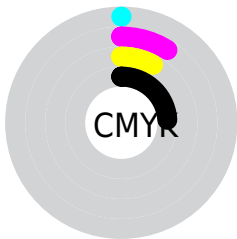
Distribution



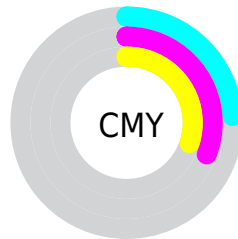
- Red (76%)
- Green (69%)
- Blue (70%)



- Red (76%)
- Yellow (69%)
- Blue (70%)



- Cyan (0%)
- Magenta (9%)
- Yellow (8%)
- Black (24%)



- Cyan (24%)
- Magenta (31%)
- Yellow (30%)

Brightness & Saturation Gradients

These gradients show how the YIQ color 182.6100, 10.0860, 4.4380 changes by changing the brightness by 10 percent. The first figure shows a shift by +10% for each color and the second figure -10%.

Similar to the brightness gradients but the following saturation gradients show a change of the YIQ color 182.6100, 10.0860, 4.4380 by changing the saturation by 10% instead.

■ 182.6100, 10.0860,
4.4380

■ 182.6100, 10.0860,
4.4380

255.0000, -0.0000,
-0.0000

■ 155.6100, 10.0860,
4.4380

■ 238.9090, 10.6820,
4.6500

■ 129.3110, 9.4900,
4.2260

■ 104.8980, 9.2150,
3.7030

■ 80.5990, 8.6190,
3.4910

■ 57.4140, 7.7020,
3.5900

■ 36.0010, 7.4270,
3.0670

■ 13.4250, 9.1690,

4.5370

0.0000, 0.0000,
0.0000

182.6100, 10.0860,
4.4380

182.6100, 10.0860,
4.4380

168.9320, 21.0430,
9.6110

195.7010, -0.5960,
-0.2120

155.7270, 32.0460,
13.9500

209.4930,
-11.8740, -5.0740

142.0490, 43.0030,
19.1230

223.1710,
-22.8310, -10.2470

128.9580, 53.6850,
23.7730

236.2620,
-33.5130, -14.8970

115.1660, 64.9630,
28.6350

237.0600,
-35.7600, -12.7200

■ 102.0750, 75.6450,
33.2850

■ 88.3970, 86.6020,
38.4580

■ 75.1920, 97.6050,
42.7970

■ 61.5140, 108.5620,
47.9700

Harmonies

Analogous

The Analogous color harmony consists of three colors that are next to each other on the color wheel.



182.3970, 6.3720, 5.6680



182.6100, 10.0860, 4.4380



182.5130, 11.7370, 2.0490

Triad

The Triadic color harmony groups three colors that are evenly spaced from another and form a triangle on the color wheel.



182.6100, 10.0860, 4.4380



179.8380, 0.2760, -5.0040



180.5520, -10.3620, 0.5660

Complementary

The Complementary color scheme is a pair of colors which are on the opposite of each other on the color wheel.



182.6100, 10.0860, 4.4380



189.3900, -10.0860, -4.4380

Split Complementary

Split-complementary colors differ from the complementary color scheme. The scheme consists of three colors, the original color and two neighbors of the complement color.



179.1880, -12.3330, -2.2610



182.6100, 10.0860, 4.4380



179.6030, -6.3720, -5.6680

Square

The Square scheme is like the rectangle color scheme, but the four colors are evenly spaced on the color wheel.



182.6100, 10.0860, 4.4380



180.5290, 5.6400, -3.0960



179.0910, -10.6820, -4.6500



181.5850, -5.9610, 3.4070

Rectangle

The Rectangle color scheme consists of four colors that form a rectangle on the color wheel.



182.6100, 10.0860, 4.4380



181.8610, 10.6370, -0.0430



179.0910, -10.6820, -4.6500



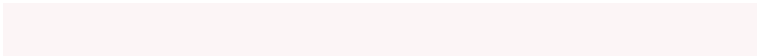
180.4270, -11.5080, -0.6920

Sweetspot

The Sweet Spot groups the original color and five complimentary colors.



182.6100, 10.0860, 4.4380



247.2070, 3.8510, 1.7950



183.8360, 3.7580, 8.9900



123.9080, 3.2550, 1.5830



0.0000, 0.0000, 0.0000



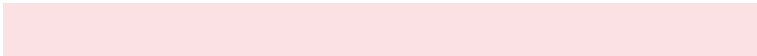
128.0000, -0.0000, -0.0000

Same Dimension

The Same Dimension uses a secret algorithm to generate beautiful new colors.



182.6100, 10.0860, 4.4380



233.4150, 15.1290, 6.6570



186.4910, 8.8030, 0.1550



90.1040, 5.6390, 2.4310



50.1910, 90.1780, 39.7300



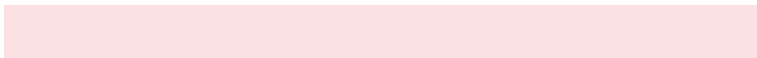
10.3230, 18.3840, 8.2400

Inverse Universe

The Inverse Universe completely reimagines the original color for something new.



182.6100, 10.0860, 4.4380



233.4150, 15.1290, 6.6570



185.5090, -8.8030, -0.1550



90.1040, 5.6390, 2.4310



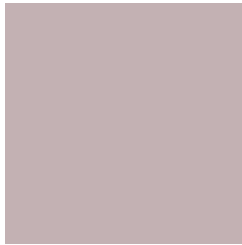
50.1910, 90.1780, 39.7300



10.3230, 18.3840, 8.2400

Previews

White Background



This preview shows how the YIQ color 182.6100, 10.0860, 4.4380 looks on a white background.

Color Contrast Check

Large Text (above 18pt) WCAG AA × Fail

Any Text WCAG AA × Fail

Large Text (above 18pt) WCAG AAA × Fail

Any Text WCAG AAA × Fail

Black Background



This preview shows how the YIQ color 182.6100, 10.0860, 4.4380 looks on a black background.

Color Contrast Check

Large Text (above 18pt) WCAG AA ✓ Pass

Any Text WCAG AA ✓ Pass

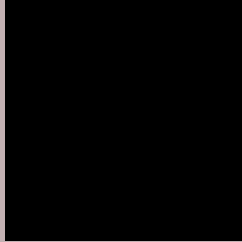
Large Text (above 18pt) WCAG AAA ✓ Pass

Any Text WCAG AAA ✓ Pass

If you want to check with other color combinations, try the [Color Contrast Checker](#).

YIQ 182.6100, 10.0860, 4.4380

Background



This preview shows how black text looks on a background with the YIQ color 182.6100, 10.0860, 4.4380.



This preview shows how white text looks on a background with the YIQ color 182.6100, 10.0860,

4.4380.

Color Blindness Simulation

Color vision deficiency is a very complex topic, and I could not describe the different causes any better than Wikipedia does, so if you want to learn more, you should check out their [article about color blindness](#).

Dichromacy



Original Color

182.6100, 10.0860, 4.4380

Protanopia

181.3100, 2.0630, 1.1590

Deuteranopia

182.6320, 13.0200, 6.3320



Tritanopia

182.8750, 8.0220, 8.8060

Trichromacy



Original Color

182.6100, 10.0860, 4.4380

Protanomaly

181.8050, 5.0430, 2.2190

Deuteranomaly

182.9200, 12.1490, 5.5970

Tritanomaly

183.0060, 9.0310, 7.0390

Monochromacy



Original Color

182.6100, 10.0860, 4.4380

Achromatopsia

183.0000, -0.0000, -0.0000

Achromatomaly

182.9080, 3.2550, 1.5830

CSS Examples

Text

The CSS property to change the color of the text to YIQ 182.6100, 10.0860, 4.4380 is called "color". The color property can be set on classes, ids or directly on the HTML element.

This example shows how text in the color `rgb(195, 177, 179)` looks like.

```
.text, #text, p{  
    color:rgb(195, 177, 179)  
}
```

If you want to add a text shadow in that color use the text-shadow property, you can generate a text shadow directly with our [CSS Text Shadow Generator](#).

Here you see how black text with a 4 pixel rgb(195, 177, 179) colored shadow looks like.

```
.shadow{ text-shadow: 4px 4px 2px rgb(195, 177, 179) }
```

Border

The CSS property to change the border of an element to YIQ 182.6100, 10.0860, 4.4380 is called "border". The border property can be set on classes, ids or directly on the HTML element.

This example shows the color as border, it can be applied via the CSS property "border" or "border-color".

```
.border, #border, table{ border:4px solid rgb(195, 177, 179) }
```


If only the border color should be changed use the property `border-color`.

```
.border{ border-color:rgb(195, 177, 179) }
```

If you want to add a box shadow in that color use:

Here you see how a box with a 4 pixel `rgb(195, 177, 179)` colored shadow looks like.

```
.boxshadow{ -moz-box-shadow:4px 4px 4px  
4px rgb(195, 177, 179); -webkit-box-  
shadow:4px 4px 4px 4px rgb(195, 177, 179);  
box-shadow:4px 4px 4px 4px rgb(195, 177,  
179) }
```

Background

The CSS property to change the background color of an element to YIQ 182.6100, 10.0860, 4.4380 is called "background". The background property can be set on classes, ids or directly on the HTML element.

```
.background, #background, body{  
background: rgb(195, 177, 179) }
```

If only the background color should be changed can be used:

```
.background{ background-color: rgb(195,  
177, 179) }
```

This example shows the color as background, it is applied via the CSS property "background".

To optimize and compress your CSS code, you can use our [online CSS compressor and optimizer](#) based on csstidy. If you want to create a linear or radial gradient as background or border, check our [CSS Gradient Generator](#).

Hey! You found this booklet interesting? Support Converting Colors with the new Membership Option!

The pro membership hides all ads, plus gives you double the colors in the color bucket, and more awesome pro features!

[Learn more, Memberships starting at \\$2.50/m!](#)

**Follow me
on Twitter!**

@ConvertingColor