

Converting Colors

YIQ(182.7300, 9.6280, 1.7240)

Have a look what the booklet for
YIQ(182.7300, 9.6280, 1.7240)
contains.

YIQ(182.7300, 9.6280, 1.7240)	3
<i>Conversions</i>	4
<i>Details</i>	6
<i>Harmonies</i>	12
<i>Previews</i>	24
<i>Color Blindness Simulation</i>	28
<i>CSS Examples</i>	31

Color

**YIQ(182.7300, 9.6280,
1.7240)**

Conversions

Conversions Part 1

Format	Color
Hex	C1B3AF
RGB	193, 179, 175
RGB Percent	76%, 70%, 69%
CMY	0.2431, 0.2980, 0.3137
CMYK	0.00, 0.07, 0.09, 0.24
HSL	13°, 13%, 72%
HSV	13°, 9%, 76%
XYZ	45.8521, 46.6719, 47.1548
YIQ	182.7300, 9.6280, 1.7240

Conversions

Conversions Part 2

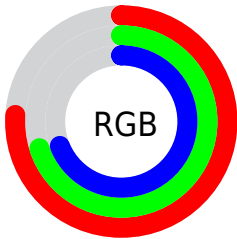
Format	Color
R_{YB}	193, 180, 175
Decimal	12694447
CIE _{Lab}	73.98, 4.30, 3.82
CIE _{LCh}	74, 5.752, 41.622
Yxy	46.6719, 0.3283, 0.3341
Android (android.graphics.Color)	4290884527 (0xFFC1B3AF)
YUV	182.7300, -3.8109, 9.0068
Hunter-Lab	68.3168, 0.2492, 6.8976

Details

The YIQ color **182.7300, 9.6280, 1.7240** is a light color, and the websafe version is hex **CCCCCC**. A complement of this color would be **185.2700, -9.6280, -1.7240**, and the grayscale version is **183.0000, -0.0000, -0.0000**.

A 20% lighter version of the original color is **238.9150, 10.5450, 1.6250**, and **129.5450, 8.7110, 1.8230** is the 20% darker color. If you saturate the color by 10%, you get **171.7590, 19.8520, 3.6600**, and if you desaturate by 10%, it is **193.7010, -0.5960, -0.2120**.

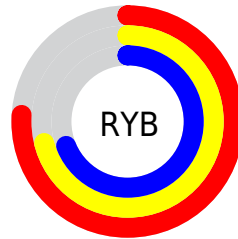
Distribution



Red (76%)

Green (70%)

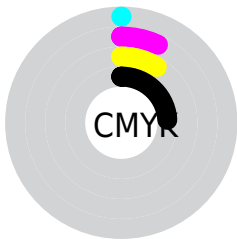
Blue (69%)



Red (76%)

Yellow (71%)

Blue (69%)

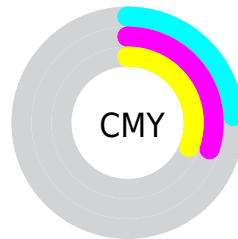


Cyan (0%)

Magenta (7%)

Yellow (9%)

Black (24%)



Cyan (24%)

Magenta (30%)

Yellow (31%)

Brightness & Saturation Gradients

These gradients show how the YIQ color 182.7300, 9.6280, 1.7240 changes by changing the brightness by 10 percent. The first figure shows a shift by +10% for each color and the second figure -10%.

Similar to the brightness gradients but the following saturation gradients show a change of the YIQ color 182.7300, 9.6280, 1.7240 by changing the saturation by 10% instead.

■ 182.7300, 9.6280,
1.7240

■ 182.7300, 9.6280,
1.7240

255.0000, -0.0000,
-0.0000

■ 155.7300, 9.6280,
1.7240

■ 239.0290, 10.2240,
1.9360

■ 129.5450, 8.7110,
1.8230

■ 104.5450, 8.7110,
1.8230

■ 80.2460, 8.1150,
1.6110

■ 57.8330, 7.8400,
1.0880

■ 35.9470, 7.5190,
1.3990

■ 14.2030, 9.6740,

0.8900

0.0000, 0.0000,
0.0000

182.7300, 9.6280,
1.7240

182.7300, 9.6280,
1.7240

171.7590, 19.8520,
3.6600

193.7010, -0.5960,
-0.2120

160.6740, 30.3970,
5.2850

204.7860,
-11.1410, -1.8370

149.7030, 40.6210,
7.2210

215.7570,
-21.3650, -3.7730

138.7320, 50.8450,
9.1570

226.7280,
-31.5890, -5.7090

127.7610, 61.0690,
11.0930

235.8750,
-36.6770, -12.6210

■ 116.6760, 71.6140,
12.7180

■ 236.4620,
-36.9520, -13.1440

■ 105.7050, 81.8380,
14.6540

■ 94.7340, 92.0620,
16.5900

■ 83.6490, 102.6070,
18.2150

Harmonies

Analogous

The Analogous color harmony consists of three colors that are next to each other on the color wheel.



182.7130, 8.2980, 3.8020



182.7300, 9.6280, 1.7240



182.0780, 8.5280, -0.3680

Triad

The Triadic color harmony groups three colors that are evenly spaced from another and form a triangle on the color wheel.



182.7300, 9.6280, 1.7240



180.6140, -4.9050, -4.7210



182.2430, -4.9980, 2.4740

Complementary

The Complementary color scheme is a pair of colors which are on the opposite of each other on the color wheel.



182.7300, 9.6280, 1.7240



185.2700, -9.6280, -1.7240

Split Complementary

Split-complementary colors differ from the complementary color scheme. The scheme consists of three colors, the original color and two neighbors of the complement color.



181.0360, -8.8490, 0.6790



182.7300, 9.6280, 1.7240



180.1020, -9.2150, -3.7030

Square

The Square scheme is like the rectangle color scheme, but the four colors are evenly spaced on the color wheel.



182.7300, 9.6280, 1.7240



181.0660, -0.3660, -4.3820



180.9710, -10.2240, -1.9360



182.6350, -0.2300, 4.1700

Rectangle

The Rectangle color scheme consists of four colors that form a rectangle on the color wheel.



182.7300, 9.6280, 1.7240



181.9420, 5.9150, -2.5730



180.9710, -10.2240, -1.9360



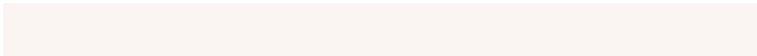
181.6450, -6.1900, 2.0500

Sweetspot

The Sweet Spot groups the original color and five complimentary colors.



182.7300, 9.6280, 1.7240



245.5660, 4.2180, 0.6500



181.9780, 6.2340, 8.1700



122.0820, 2.7050, 0.5370



252.0000, 0.0000, 0.0000



125.0000, 0.0000, 0.0000

Same Dimension

The Same Dimension uses a secret algorithm to generate beautiful new colors.



182.7300, 9.6280, 1.7240



234.4810, 14.7630, 2.2750



188.0130, 7.1530, -2.9830



91.1640, 5.4100, 1.0740



69.2710, 86.0560, 15.3040



13.9760, 17.7430, 3.3350

Inverse Universe

The Inverse Universe completely reimagines the original color for something new.



185.2700, -9.6280, -1.7240



238.1060, -15.0380, -2.7980



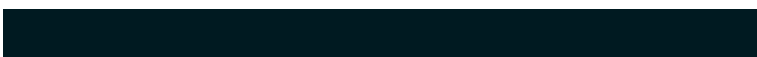
179.9870, -7.1530, 2.9830



92.8360, -5.4100, -1.0740



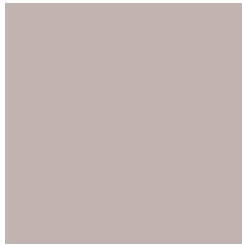
91.7290, -86.0560, -15.3040



19.0240, -17.7430, -3.3350

Previews

White Background



This preview shows how the YIQ color 182.7300, 9.6280, 1.7240 looks on a white background.

Color Contrast Check

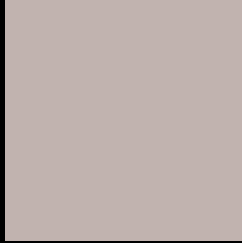
Large Text (above 18pt) WCAG AA × Fail

Any Text WCAG AA × Fail

Large Text (above 18pt) WCAG AAA × Fail

Any Text WCAG AAA × Fail

Black Background



This preview shows how the YIQ color 182.7300, 9.6280, 1.7240 looks on a black background.

Color Contrast Check

Large Text (above 18pt) WCAG AA ✓ Pass

Any Text WCAG AA ✓ Pass

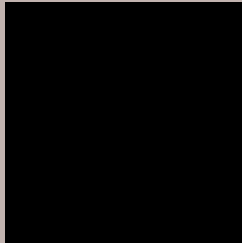
Large Text (above 18pt) WCAG AAA ✓ Pass

Any Text WCAG AAA ✓ Pass

If you want to check with other color combinations, try the [Color Contrast Checker](#).

YIQ 182.7300, 9.6280, 1.7240

Background



This preview shows how black text looks on a background with the YIQ color 182.7300, 9.6280, 1.7240.



This preview shows how white text looks on a background with the YIQ color 182.7300, 9.6280,

1.7240.

Color Blindness Simulation

Color vision deficiency is a very complex topic, and I could not describe the different causes any better than Wikipedia does, so if you want to learn more, you should check out their [article about color blindness](#).

Dichromacy



Original Color

182.7300, 9.6280, 1.7240

Protanopia

181.9250, 4.5850, -0.4950

Deuteranopia

183.7740, 15.4960, 5.5120



Tritanopia

183.8640, 6.5550, 7.8590

Trichromacy



Original Color

182.7300, 9.6280, 1.7240

Protanomaly

182.2350, 6.6480, 0.6640

Deuteranomaly

183.4640, 13.4330, 4.3530

Tritanomaly

183.5820, 7.2890, 5.5690

Monochromacy



Original Color

182.7300, 9.6280, 1.7240

Achromatopsia

183.0000, -0.0000, -0.0000

Achromatomaly

183.2670, 3.6220, 0.4380

CSS Examples

Text

The CSS property to change the color of the text to YIQ 182.7300, 9.6280, 1.7240 is called "color". The color property can be set on classes, ids or directly on the HTML element.

This example shows how text in the color `rgb(193, 179, 175)` looks like.

```
.text, #text, p{  
    color:rgb(193, 179, 175)  
}
```

If you want to add a text shadow in that color use the text-shadow property, you can generate a text shadow directly with our [CSS Text Shadow Generator](#).

Here you see how black text with a 4 pixel rgb(193, 179, 175) colored shadow looks like.

```
.shadow{ text-shadow: 4px 4px 2px rgb(193, 179, 175) }
```

Border

The CSS property to change the border of an element to YIQ 182.7300, 9.6280, 1.7240 is called "border". The border property can be set on classes, ids or directly on the HTML element.

This example shows the color as border, it can be applied via the CSS property "border" or "border-color".

```
.border, #border, table{ border:4px solid rgb(193, 179, 175) }
```


If only the border color should be changed use the property `border-color`.

```
.border{ border-color:rgb(193, 179, 175) }
```

If you want to add a box shadow in that color use:

Here you see how a box with a 4 pixel `rgb(193, 179, 175)` colored shadow looks like.

```
.boxshadow{ -moz-box-shadow:4px 4px 4px  
4px rgb(193, 179, 175); -webkit-box-  
shadow:4px 4px 4px 4px rgb(193, 179, 175);  
box-shadow:4px 4px 4px 4px rgb(193, 179,  
175) }
```

Background

The CSS property to change the background color of an element to YIQ 182.7300, 9.6280, 1.7240 is called "background". The background property can be set on classes, ids or directly on the HTML element.

```
.background, #background, body{  
background: rgb(193, 179, 175) }
```

If only the background color should be changed can be used:

```
.background{ background-color: rgb(193,  
179, 175) }
```

This example shows the color as background, it is applied via the CSS property "background".

To optimize and compress your CSS code, you can use our [online CSS compressor and optimizer](#) based on csstidy. If you want to create a linear or radial gradient as background or border, check our [CSS Gradient Generator](#).

Hey! You found this booklet interesting? Support Converting Colors with the new Membership Option!

The pro membership hides all ads, plus gives you double the colors in the color bucket, and more awesome pro features!

[Learn more, Memberships starting at \\$2.50/m!](#)

**Follow me
on Twitter!**

@ConvertingColor