

Converting Colors

YIQ(182.7590, 19.8520, 3.6600)

Have a look what the booklet for
YIQ(182.7590, 19.8520, 3.6600)
contains.

YIQ(182.7590, 19.8520, 3.6600)	3
<i>Conversions</i>	4
<i>Details</i>	6
<i>Harmonies</i>	12
<i>Previews</i>	24
<i>Color Blindness Simulation</i>	28
<i>CSS Examples</i>	31

Color

**YIQ(182.7590, 19.8520,
3.6600)**

Conversions

Conversions Part 1

Format	Color
Hex	CCAFA7
RGB	204, 175, 167
RGB Percent	80%, 69%, 65%
CMY	0.1999, 0.3138, 0.3450
CMYK	0.00, 0.14, 0.18, 0.20
HSL	13°, 27%, 73%
HSV	13°, 18%, 80%
XYZ	47.2110, 46.2857, 43.0155
YIQ	182.7590, 19.8520, 3.6600

Conversions

Conversions Part 2

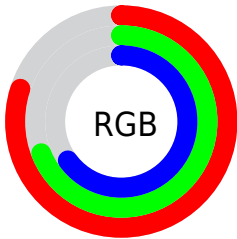
Format	Color
RYB	204, 177, 167
Decimal	13414311
CIELab	73.73, 9.21, 7.96
CIELCh	74, 12.169, 40.824
Yxy	46.2857, 0.3458, 0.3391
Android (android.graphics.Color)	4291604391 (0xFFCCAFA7)
YUV	182.7590, -7.7692, 18.6284
Hunter-Lab	68.0336, 4.8088, 10.1363

Details

The YIQ color **182.7590, 19.8520, 3.6600** is a light color, and the websafe version is hex **CC9999**. A complement of this color would be **188.2410, -19.8520, -3.6600**, and the grayscale version is **183.0000, -0.0000, -0.0000**.

A 20% lighter version of the original color is **237.1500, 17.1930, 2.2890**, and **129.8620, 18.0640, 3.0240** is the 20% darker color. If you saturate the color by 10%, you get **171.0870, 30.6720, 5.8080**, and if you desaturate by 10%, it is **194.4310, 9.0320, 1.5120**.

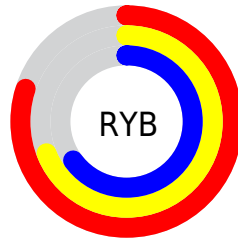
Distribution



Red (80%)

Green (69%)

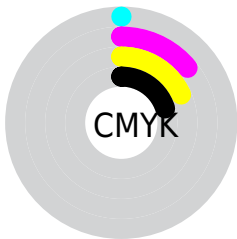
Blue (65%)



Red (80%)

Yellow (69%)

Blue (65%)

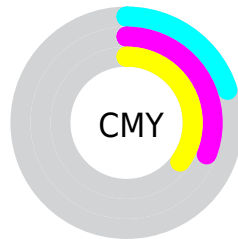


Cyan (0%)

Magenta (14%)

Yellow (18%)

Black (20%)



Cyan (20%)

Magenta (31%)

Yellow (35%)

Brightness & Saturation Gradients

These gradients show how the YIQ color 182.7590, 19.8520, 3.6600 changes by changing the brightness by 10 percent. The first figure shows a shift by +10% for each color and the second figure -10%.

Similar to the brightness gradients but the following saturation gradients show a change of the YIQ color 182.7590, 19.8520, 3.6600 by changing the saturation by 10% instead.

■ 182.7590, 19.8520,
3.6600

■ 182.7590, 19.8520,
3.6600

255.0000, -0.0000,
-0.0000

■ 155.5740, 18.9350,
3.7590

■ 237.1500, 17.1930,
2.2890

■ 129.8620, 18.0640,
3.0240

■ 254.5440, 1.2840,
-1.2440

■ 104.6770, 17.1470,
3.1230

■ 80.3780, 16.5510,
2.9110

■ 57.1930, 15.6340,
3.0100

■ 35.2960, 13.8460,
2.3740

■ 12.7910, 16.8260,

3.4340

0.0000, 0.0000,
0.0000

182.7590, 19.8520,
3.6600

182.7590, 19.8520,
3.6600

171.0870, 30.6720,
5.8080

194.4310, 9.0320,
1.5120

159.3010, 41.8130,
7.6450

206.2170, -2.1090,
-0.3250

147.6290, 52.6330,
9.7930

217.8890,
-12.9290, -2.4730

135.8430, 63.7740,
11.6300

229.6750,
-24.0700, -4.3100

124.1710, 74.5940,
13.7780

239.7510,
-30.3960, -10.8120

■ 112.4990, 85.4140,
15.9260

■ 100.7130, 96.5550,
17.7630

■ 89.0410, 107.3750,
19.9110

■ 86.8240, 109.4840,
20.2360

Harmonies

Analogous

The Analogous color harmony consists of three colors that are next to each other on the color wheel.



183.6110, 17.5130, 7.5050



182.7590, 19.8520, 3.6600



181.6290, 17.1020, -1.5700

Triad

The Triadic color harmony groups three colors that are evenly spaced from another and form a triangle on the color wheel.



182.7590, 19.8520, 3.6600



177.6300, -11.0020, -9.8660



181.4150, -11.2340, 5.3580

Complementary

The Complementary color scheme is a pair of colors which are on the opposite of each other on the color wheel.



182.7590, 19.8520, 3.6600



188.2410, -19.8520, -3.6600

Split Complementary

Split-complementary colors differ from the complementary color scheme. The scheme consists of three colors, the original color and two neighbors of the complement color.



179.1750, -19.4860, 0.7220



182.7590, 19.8520, 3.6600



177.4920, -19.3010, -8.1410

Square

The Square scheme is like the rectangle color scheme, but the four colors are evenly spaced on the color wheel.



182.7590, 19.8520, 3.6600



179.0180, -0.4110, -9.0750



178.0450, -22.2360, -4.5080



182.6830, -0.1850, 8.8630

Rectangle

The Rectangle color scheme consists of four colors that form a rectangle on the color wheel.



182.7590, 19.8520, 3.6600



180.5960, 12.7010, -4.4110



178.0450, -22.2360, -4.5080



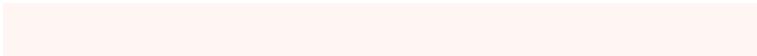
180.8060, -13.8930, 3.9870

Sweetspot

The Sweet Spot groups the original color and five complimentary colors.



182.7590, 19.8520, 3.6600



247.6480, 6.9230, 1.1870



181.4830, 12.4220, 17.1740



122.9790, 4.4930, 1.1730



0.0000, 0.0000, 0.0000



128.0000, -0.0000, -0.0000

Same Dimension

The Same Dimension uses a secret algorithm to generate beautiful new colors.



182.7590, 19.8520, 3.6600



222.7880, 30.0760, 5.5960



193.3250, 14.9020, -5.7540



96.1640, 5.4100, 1.0740



70.7660, 89.0360, 16.3640



16.0580, 20.4480, 3.8720

Inverse Universe

The Inverse Universe completely reimagines the original color for something new.



188.2410, -19.8520, -3.6600



231.2120, -30.0760, -5.5960



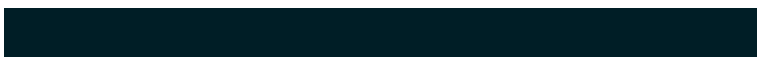
177.6750, -14.9020, 5.7540



97.8360, -5.4100, -1.0740



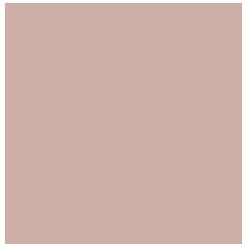
95.2340, -89.0360, -16.3640



21.9420, -20.4480, -3.8720

Previews

White Background



This preview shows how the YIQ color 182.7590, 19.8520, 3.6600 looks on a white background.

Color Contrast Check

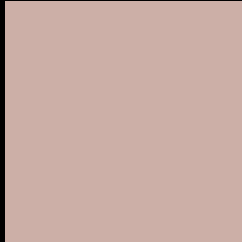
Large Text (above 18pt) WCAG AA × Fail

Any Text WCAG AA × Fail

Large Text (above 18pt) WCAG AAA × Fail

Any Text WCAG AAA × Fail

Black Background



This preview shows how the YIQ color 182.7590, 19.8520, 3.6600 looks on a black background.

Color Contrast Check

Large Text (above 18pt) WCAG AA ✓ Pass

Any Text WCAG AA ✓ Pass

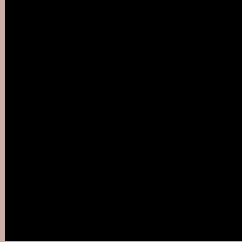
Large Text (above 18pt) WCAG AAA ✓ Pass

Any Text WCAG AAA ✓ Pass

If you want to check with other color combinations, try the [Color Contrast Checker](#).

YIQ 182.7590, 19.8520, 3.6600

Background



This preview shows how black text looks on a background with the YIQ color 182.7590, 19.8520, 3.6600.



This preview shows how white text looks on a background with the YIQ color 182.7590, 19.8520,

3.6600.

Color Blindness Simulation

Color vision deficiency is a very complex topic, and I could not describe the different causes any better than Wikipedia does, so if you want to learn more, you should check out their [article about color blindness](#).

Dichromacy



Original Color

182.7590, 19.8520, 3.6600

Protanopia

181.5400, 7.1070, -2.1490

Deuteranopia

182.7590, 19.8520, 3.6600



Tritanopia

183.7620, 15.7700, 11.5620

Trichromacy



Original Color

182.7590, 19.8520, 3.6600

Protanomaly

182.0460, 11.5540, -0.1420

Deuteranomaly

182.7590, 19.8520, 3.6600

Tritanomaly

183.2520, 17.1460, 8.6500

Monochromacy



Original Color

182.7590, 19.8520, 3.6600

Achromatopsia

183.0000, -0.0000, -0.0000

Achromatomaly

182.9470, 7.5190, 1.3990

CSS Examples

Text

The CSS property to change the color of the text to YIQ 182.7590, 19.8520, 3.6600 is called "color". The color property can be set on classes, ids or directly on the HTML element.

This example shows how text in the color `rgb(204, 175, 167)` looks like.

```
.text, #text, p{  
    color:rgb(204, 175, 167)  
}
```

If you want to add a text shadow in that color use the text-shadow property, you can generate a text shadow directly with our [CSS Text Shadow Generator](#).

Here you see how black text with a 4 pixel rgb(204, 175, 167) colored shadow looks like.

```
.shadow{ text-shadow: 4px 4px 2px rgb(204, 175, 167) }
```

Border

The CSS property to change the border of an element to YIQ 182.7590, 19.8520, 3.6600 is called "border". The border property can be set on classes, ids or directly on the HTML element.

This example shows the color as border, it can be applied via the CSS property "border" or "border-color".

```
.border, #border, table{ border:4px solid rgb(204, 175, 167) }
```


If only the border color should be changed use the property `border-color`.

```
.border{ border-color:rgb(204, 175, 167) }
```

If you want to add a box shadow in that color use:

Here you see how a box with a 4 pixel `rgb(204, 175, 167)` colored shadow looks like.

```
.boxshadow{ -moz-box-shadow:4px 4px 4px  
4px rgb(204, 175, 167); -webkit-box-  
shadow:4px 4px 4px 4px rgb(204, 175, 167);  
box-shadow:4px 4px 4px 4px rgb(204, 175,  
167) }
```

Background

The CSS property to change the background color of an element to YIQ 182.7590, 19.8520, 3.6600 is called "background". The background property can be set on classes, ids or directly on the HTML element.

```
.background, #background, body{  
background: rgb(204, 175, 167) }
```

If only the background color should be changed can be used:

```
.background{ background-color: rgb(204,  
175, 167) }
```

This example shows the color as background, it is applied via the CSS property "background".

To optimize and compress your CSS code, you can use our [online CSS compressor and optimizer](#) based on csstidy. If you want to create a linear or radial gradient as background or border, check our [CSS Gradient Generator](#).

Hey! You found this booklet interesting? Support Converting Colors with the new Membership Option!

The pro membership hides all ads, plus gives you double the colors in the color bucket, and more awesome pro features!

[Learn more, Memberships starting at \\$2.50/m!](#)

**Follow me
on Twitter!**

@ConvertingColor