

Converting Colors

YIQ(182.7640, 21.4560, 7.6320)

Have a look what the booklet for
YIQ(182.7640, 21.4560, 7.6320)
contains.

| | |
|--|----|
| YIQ(182.7640, 21.4560, 7.6320) | 3 |
| <i>Conversions</i> | 4 |
| <i>Details</i> | 6 |
| <i>Harmonies</i> | 12 |
| <i>Previews</i> | 24 |
| <i>Color Blindness Simulation</i> | 28 |
| <i>CSS Examples</i> | 31 |

Color

**YIQ(182.7640, 21.4560,
7.6320)**

Conversions

Conversions Part 1

| Format | Color |
|-------------|---------------------------|
| Hex | D0ACAC |
| RGB | 208, 172, 172 |
| RGB Percent | 82%, 67%, 67% |
| CMY | 0.1842, 0.3255, 0.3254 |
| CMYK | 0.00, 0.17, 0.17, 0.18 |
| HSL | 360°, 28%, 75% |
| HSV | 360°, 17%, 82% |
| XYZ | 48.2167, 45.8917, 45.3574 |
| YIQ | 182.7640, 21.4560, 7.6320 |

Conversions

Conversions Part 2

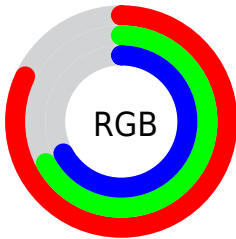
| Format | Color |
|-------------------------------------|-------------------------------|
| R _{YB} | 208, 172, 172 |
| Decimal | 13675692 |
| CIE Lab | 73.48, 13.10, 4.90 |
| CIE LCh | 73, 13.987, 20.503 |
| Yxy | 45.8917, 0.3457, 0.3291 |
| Android (android.graphics.Color) | 4291865772 (0xFFD0ACAC) |
| YUV | 182.7640, -5.3067, 22.1320 |
| Hunter-Lab | 67.7434, 8.4971, 7.7230 |

Details

The YIQ color $182.7640, 21.4560, 7.6320$ is a light color, and the websafe version is hex $CC9999$. A complement of this color would be $197.2360, -21.4560, -7.6320$, and the grayscale version is $183.0000, -0.0000, -0.0000$.

A 20% lighter version of the original color is $235.3720, 16.6880, 5.9360$, and $129.8670, 19.6680, 6.9960$ is the 20% darker color. If you saturate the color by 10%, you get $168.0430, 33.9720, 12.0840$, and if you desaturate by 10%, it is $197.4850, 8.9400, 3.1800$.

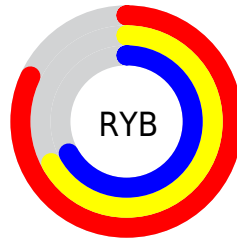
Distribution



Red (82%)

Green (67%)

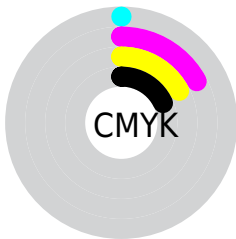
Blue (67%)



Red (82%)

Yellow (67%)

Blue (67%)

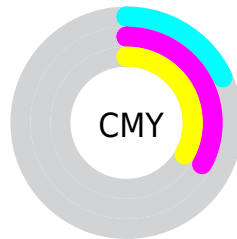


Cyan (0%)

Magenta (17%)

Yellow (17%)

Black (18%)



Cyan (18%)

Magenta (33%)

Yellow (33%)

Brightness & Saturation Gradients

These gradients show how the YIQ color 182.7640, 21.4560, 7.6320 changes by changing the brightness by 10 percent. The first figure shows a shift by +10% for each color and the second figure -10%.

Similar to the brightness gradients but the following saturation gradients show a change of the YIQ color 182.7640, 21.4560, 7.6320 by changing the saturation by 10% instead.

■ 182.7640, 21.4560,
7.6320

■ 182.7640, 21.4560,
7.6320

255.0000, -0.0000,
-0.0000

■ 155.4650, 20.8600,
7.4200

■ 235.3720, 16.6880,
5.9360

■ 129.8670, 19.6680,
6.9960

■ 104.5680, 19.0720,
6.7840

■ 79.9700, 17.8800,
6.3600

■ 56.7850, 16.9630,
6.4590

■ 34.8880, 15.1750,
5.8230

■ 11.4540, 19.3930,

6.4730

0.0000, 0.0000,
0.0000

182.7640, 21.4560,
7.6320

182.7640, 21.4560,
7.6320

168.0430, 33.9720,
12.0840

197.4850, 8.9400,
3.1800

153.3220, 46.4880,
16.5360

212.2060, -3.5760,
-1.2720

139.3020, 58.4080,
20.7760

226.2260,
-15.4960, -5.5120

124.5810, 70.9240,
25.2280

240.9470,
-28.0120, -9.9640

109.8600, 83.4400,
29.6800

■ 95.1390, 95.9560,
34.1320

■ 80.5320, 108.1510,
38.8950

■ 66.3980, 120.3920,
42.8240

■ 62.1920, 123.9680,
44.0960

Harmonies

Analogous

The Analogous color harmony consists of three colors that are next to each other on the color wheel.



183.0500, 14.8990, 10.8270



182.7640, 21.4560, 7.6320



181.7870, 22.6490, 2.5290

Triad

The Triadic color harmony groups three colors that are evenly spaced from another and form a triangle on the color wheel.



182.7640, 21.4560, 7.6320



177.8110, -4.2620, -10.8700



179.2290, -19.5780, 2.3900

Complementary

The Complementary color scheme is a pair of colors which are on the opposite of each other on the color wheel.



182.7640, 21.4560, 7.6320



197.2360, -21.4560, -7.6320

Split Complementary

Split-complementary colors differ from the complementary color scheme. The scheme consists of three colors, the original color and two neighbors of the complement color.



177.1310, -25.3540, -3.0660



182.7640, 21.4560, 7.6320



176.4660, -16.4120, -10.9400

Square

The Square scheme is like the rectangle color scheme, but the four colors are evenly spaced on the color wheel.



182.7640, 21.4560, 7.6320



178.7370, 7.7500, -8.2980



176.1540, -24.1610, -8.1690



181.5510, -8.6210, 7.5630

Rectangle

The Rectangle color scheme consists of four colors that form a rectangle on the color wheel.



182.7640, 21.4560, 7.6320



181.2980, 19.5320, -1.5560



176.1540, -24.1610, -8.1690



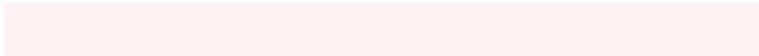
178.2070, -22.5120, 0.4960

Sweetspot

The Sweet Spot groups the original color and five complimentary colors.



182.7640, 21.4560, 7.6320



245.8870, 7.7480, 2.7560



186.5690, 9.3040, 18.6160



122.3920, 4.7680, 1.6960



0.0000, 0.0000, 0.0000



128.0000, -0.0000, -0.0000

Same Dimension

The Same Dimension uses a secret algorithm to generate beautiful new colors.



182.7640, 21.4560, 7.6320



217.1460, 32.1840, 11.4480



192.7430, 16.7810, -1.2590



97.2890, 6.5560, 2.3320



50.2320, 100.1280, 35.6160



12.2590, 24.4360, 8.6920

Inverse Universe

The Inverse Universe completely reimagines the original color for something new.



182.7640, 21.4560, 7.6320



217.1460, 32.1840, 11.4480



187.2570, -16.7810, 1.2590



97.2890, 6.5560, 2.3320



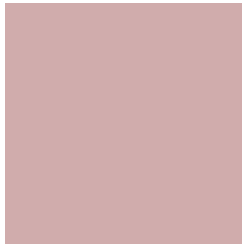
50.2320, 100.1280, 35.6160



12.2590, 24.4360, 8.6920

Previews

White Background



This preview shows how the YIQ color 182.7640, 21.4560, 7.6320 looks on a white background.

Color Contrast Check

Large Text (above 18pt) WCAG AA × Fail

Any Text WCAG AA × Fail

Large Text (above 18pt) WCAG AAA × Fail

Any Text WCAG AAA × Fail

Black Background



This preview shows how the YIQ color 182.7640, 21.4560, 7.6320 looks on a black background.

Color Contrast Check

Large Text (above 18pt) WCAG AA ✓ Pass

Any Text WCAG AA ✓ Pass

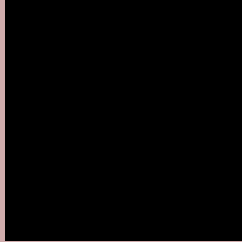
Large Text (above 18pt) WCAG AAA ✓ Pass

Any Text WCAG AAA ✓ Pass

If you want to check with other color combinations, try the [Color Contrast Checker](#).

YIQ 182.7640, 21.4560, 7.6320

Background



This preview shows how black text looks on a background with the YIQ color 182.7640, 21.4560, 7.6320.



This preview shows how white text looks on a background with the YIQ color 182.7640, 21.4560,

Color Blindness Simulation

Color vision deficiency is a very complex topic, and I could not describe the different causes any better than Wikipedia does, so if you want to learn more, you should check out their [article about color blindness](#).

Dichromacy



Original Color

182.7640, 21.4560, 7.6320

Protanopia

181.0390, 4.2640, -0.1840

Deuteranopia

182.7310, 17.0550, 4.7910



Tritanopia

183.1430, 19.0710, 12.3110

Trichromacy



Original Color

182.7640, 21.4560, 7.6320

Protanomaly

181.5560, 10.1780, 2.7700

Deuteranomaly

182.7420, 18.5220, 5.7380

Tritanomaly

183.2740, 20.0800, 10.5440

Monochromacy



Original Color

182.7640, 21.4560, 7.6320

Achromatopsia

183.0000, -0.0000, -0.0000

Achromatomaly

182.8870, 7.7480, 2.7560

CSS Examples

Text

The CSS property to change the color of the text to YIQ 182.7640, 21.4560, 7.6320 is called "color". The color property can be set on classes, ids or directly on the HTML element.

This example shows how text in the color `rgb(208, 172, 172)` looks like.

```
.text, #text, p{  
    color:rgb(208, 172, 172)  
}
```

If you want to add a text shadow in that color use the text-shadow property, you can generate a text shadow directly with our [CSS Text Shadow Generator](#).

Here you see how black text with a 4 pixel rgb(208, 172, 172) colored shadow looks like.

```
.shadow{ text-shadow: 4px 4px 2px rgb(208, 172, 172) }
```

Border

The CSS property to change the border of an element to YIQ 182.7640, 21.4560, 7.6320 is called "border". The border property can be set on classes, ids or directly on the HTML element.

This example shows the color as border, it can be applied via the CSS property "border" or "border-color".

```
.border, #border, table{ border:4px solid rgb(208, 172, 172) }
```


If only the border color should be changed use the property `border-color`.

```
.border{ border-color:rgb(208, 172, 172) }
```

If you want to add a box shadow in that color use:

Here you see how a box with a 4 pixel `rgb(208, 172, 172)` colored shadow looks like.

```
.boxshadow{ -moz-box-shadow:4px 4px 4px  
4px rgb(208, 172, 172); -webkit-box-  
shadow:4px 4px 4px 4px rgb(208, 172, 172);  
box-shadow:4px 4px 4px 4px rgb(208, 172,  
172) }
```

Background

The CSS property to change the background color of an element to YIQ 182.7640, 21.4560, 7.6320 is called "background". The background property can be set on classes, ids or directly on the HTML element.

```
.background, #background, body{  
background: rgb(208, 172, 172) }
```

If only the background color should be changed can be used:

```
.background{ background-color: rgb(208,  
172, 172) }
```

This example shows the color as background, it is applied via the CSS property "background".

To optimize and compress your CSS code, you can use our [online CSS compressor and optimizer](#) based on csstidy. If you want to create a linear or radial gradient as background or border, check our [CSS Gradient Generator](#).

Hey! You found this booklet interesting? Support Converting Colors with the new Membership Option!

The pro membership hides all ads, plus gives you double the colors in the color bucket, and more awesome pro features!

[Learn more, Memberships starting at \\$2.50/m!](#)

**Follow me
on Twitter!**

@ConvertingColor