

Converting Colors

YIQ(182.7700, 21.3190, 4.6070)

Have a look what the booklet for
YIQ(182.7700, 21.3190, 4.6070)
contains.

YIQ(182.7700, 21.3190, 4.6070)	3
<i>Conversions</i>	4
<i>Details</i>	6
<i>Harmonies</i>	12
<i>Previews</i>	24
<i>Color Blindness Simulation</i>	28
<i>CSS Examples</i>	31

Color

**YIQ(182.7700, 21.3190,
4.6070)**

Conversions

Conversions Part 1

Format	Color
Hex	CEAEA7
RGB	206, 174, 167
RGB Percent	81%, 68%, 65%
CMY	0.1921, 0.3177, 0.3450
CMYK	0.00, 0.16, 0.19, 0.19
HSL	11°, 28%, 73%
HSV	11°, 19%, 81%
XYZ	47.5693, 46.1822, 42.9772
YIQ	182.7700, 21.3190, 4.6070

Conversions

Conversions Part 2

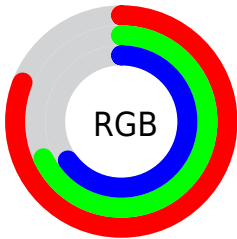
Format	Color
RYB	206, 176, 167
Decimal	13545127
CIELab	73.66, 10.50, 7.88
CIElCh	74, 13.128, 36.909
Yxy	46.1822, 0.3479, 0.3378
Android (android.graphics.Color)	4291735207 (0xFFCEAEA7)
YUV	182.7700, -7.7746, 20.3727
Hunter-Lab	67.9575, 6.0219, 10.0744

Details

The YIQ color **182.7700, 21.3190, 4.6070** is a light color, and the websafe version is hex **CC9999**. A complement of this color would be **190.2300, -21.3190, -4.6070**, and the grayscale version is **183.0000, -0.0000, -0.0000**.

A 20% lighter version of the original color is **236.5630, 17.4680, 2.8120**, and **129.8730, 19.5310, 3.9710** is the 20% darker color. If you saturate the color by 10%, you get **170.3970, 32.7350, 6.9670**, and if you desaturate by 10%, it is **195.1430, 9.9030, 2.2470**.

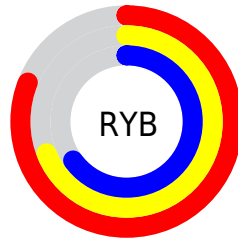
Distribution



Red (81%)

Green (68%)

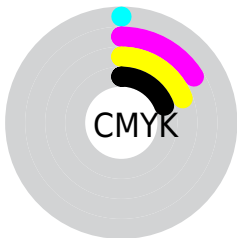
Blue (65%)



Red (81%)

Yellow (69%)

Blue (65%)

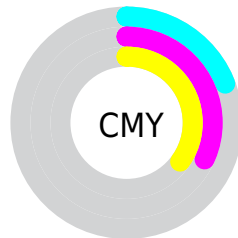


Cyan (0%)

Magenta (16%)

Yellow (19%)

Black (19%)



Cyan (19%)

Magenta (32%)

Yellow (35%)

Brightness & Saturation Gradients

These gradients show how the YIQ color 182.7700, 21.3190, 4.6070 changes by changing the brightness by 10 percent. The first figure shows a shift by +10% for each color and the second figure -10%.

Similar to the brightness gradients but the following saturation gradients show a change of the YIQ color 182.7700, 21.3190, 4.6070 by changing the saturation by 10% instead.

■ 182.7700, 21.3190,
4.6070

■ 182.7700, 21.3190,
4.6070

■ 255.0000, -0.0000,
-0.0000

■ 155.5850, 20.4020,
4.7060

■ 235.9760, 17.7430,
3.3350

■ 129.8730, 19.5310,
3.9710

■ 254.5440, 1.2840,
-1.2440

■ 104.6880, 18.6140,
4.0700

■ 80.3890, 18.0180,
3.8580

■ 56.9050, 16.5050,
3.7450

■ 35.3070, 15.3130,
3.3210

■ 12.5030, 17.6970,

4.1690

0.0000, 0.0000,
0.0000

182.7700, 21.3190,
4.6070

182.7700, 21.3190,
4.6070

170.3970, 32.7350,
6.9670

195.1430, 9.9030,
2.2470

158.1380, 43.8300,
9.6380

207.4020, -1.1920,
-0.4240

145.7650, 55.2460,
11.9980

219.7750,
-12.6080, -2.7840

133.5060, 66.3410,
14.6690

232.0340,
-23.7030, -5.4550

121.1330, 77.7570,
17.0290

240.3490,
-29.2040, -10.3880

■ 108.7600, 89.1730,
19.3890

■ 97.0880, 99.9930,
21.5370

■ 84.7150, 111.4090,
23.8970

■ 83.3130, 112.6010,
24.3210

Harmonies

Analogous

The Analogous color harmony consists of three colors that are next to each other on the color wheel.



183.5510, 17.7420, 8.8620



182.7700, 21.3190, 4.6070



181.5260, 18.8900, -0.9340

Triad

The Triadic color harmony groups three colors that are evenly spaced from another and form a triangle on the color wheel.



182.7700, 21.3190, 4.6070



177.4020, -10.3600, -10.4880



181.0450, -13.0680, 5.5560

Complementary

The Complementary color scheme is a pair of colors which are on the opposite of each other on the color wheel.



182.7700, 21.3190, 4.6070



190.2300, -21.3190, -4.6070

Split Complementary

Split-complementary colors differ from the complementary color scheme. The scheme consists of three colors, the original color and two neighbors of the complement color.



178.9790, -21.8700, -0.1260



182.7700, 21.3190, 4.6070



176.6660, -19.8510, -9.1870

Square

The Square scheme is like the rectangle color scheme, but the four colors are evenly spaced on the color wheel.



182.7700, 21.3190, 4.6070



179.0890, 0.8270, -9.4850



177.1480, -24.0240, -5.1440



182.6120, -1.4230, 9.2730

Rectangle

The Rectangle color scheme consists of four colors that form a rectangle on the color wheel.



182.7700, 21.3190, 4.6070



180.9660, 14.5350, -4.6090



177.1480, -24.0240, -5.1440



180.1370, -16.3230, 3.9730

Sweetspot

The Sweet Spot groups the original color and five complimentary colors.



182.7700, 21.3190, 4.6070



245.6590, 8.3900, 2.1340



182.4230, 12.6510, 18.5310



122.2780, 5.0890, 1.3850



0.0000, 0.0000, 0.0000



128.0000, -0.0000, -0.0000

Same Dimension

The Same Dimension uses a secret algorithm to generate beautiful new colors.



182.7700, 21.3190, 4.6070



220.0980, 32.1390, 6.7550



193.9230, 16.0940, -5.3300



96.1640, 5.4100, 1.0740



67.2440, 90.6860, 19.5020



15.4710, 20.7230, 4.3950

Inverse Universe

The Inverse Universe completely reimagines the original color for something new.



190.2300, -21.3190, -4.6070



231.4890, -32.4140, -7.2780



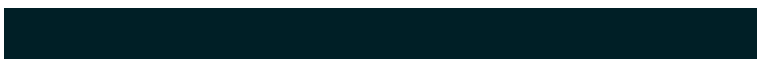
179.0770, -16.0940, 5.3300



97.8360, -5.4100, -1.0740



98.7560, -90.6860, -19.5020



22.5290, -20.7230, -4.3950

Previews

White Background



This preview shows how the YIQ color 182.7700, 21.3190, 4.6070 looks on a white background.

Color Contrast Check

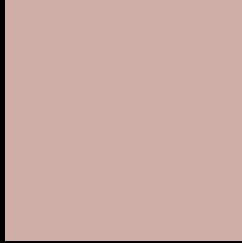
Large Text (above 18pt) WCAG AA × Fail

Any Text WCAG AA × Fail

Large Text (above 18pt) WCAG AAA × Fail

Any Text WCAG AAA × Fail

Black Background



This preview shows how the YIQ color 182.7700, 21.3190, 4.6070 looks on a black background.

Color Contrast Check

Large Text (above 18pt) WCAG AA ✓ Pass

Any Text WCAG AA ✓ Pass

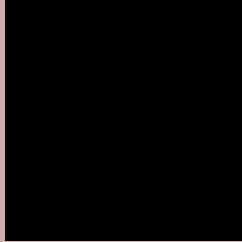
Large Text (above 18pt) WCAG AAA ✓ Pass

Any Text WCAG AAA ✓ Pass

If you want to check with other color combinations, try the [Color Contrast Checker](#).

YIQ 182.7700, 21.3190, 4.6070

Background



This preview shows how black text looks on a background with the YIQ color 182.7700, 21.3190, 4.6070.



This preview shows how white text looks on a background with the YIQ color 182.7700, 21.3190,

4.6070.

Color Blindness Simulation

Color vision deficiency is a very complex topic, and I could not describe the different causes any better than Wikipedia does, so if you want to learn more, you should check out their [article about color blindness](#).

Dichromacy



Original Color

182.7700, 21.3190, 4.6070

Protanopia

181.0670, 7.0610, -1.3150

Deuteranopia

182.7590, 19.8520, 3.6600



Tritanopia

183.6590, 17.5580, 12.1980

Trichromacy



Original Color

182.7700, 21.3190, 4.6070

Protanomaly

181.8720, 12.1040, 0.9040

Deuteranomaly

183.0580, 20.4480, 3.8720

Tritanomaly

183.1490, 18.9340, 9.2860

Monochromacy



Original Color

182.7700, 21.3190, 4.6070

Achromatopsia

183.0000, -0.0000, -0.0000

Achromatomaly

182.9470, 7.5190, 1.3990

CSS Examples

Text

The CSS property to change the color of the text to YIQ 182.7700, 21.3190, 4.6070 is called "color". The color property can be set on classes, ids or directly on the HTML element.

This example shows how text in the color `rgb(206, 174, 167)` looks like.

```
.text, #text, p{  
    color:rgb(206, 174, 167)  
}
```

If you want to add a text shadow in that color use the text-shadow property, you can generate a text shadow directly with our [CSS Text Shadow Generator](#).

Here you see how black text with a 4 pixel rgb(206, 174, 167) colored shadow looks like.

```
.shadow{ text-shadow: 4px 4px 2px rgb(206, 174, 167) }
```

Border

The CSS property to change the border of an element to YIQ 182.7700, 21.3190, 4.6070 is called "border". The border property can be set on classes, ids or directly on the HTML element.

This example shows the color as border, it can be applied via the CSS property "border" or "border-color".

```
.border, #border, table{ border:4px solid rgb(206, 174, 167) }
```


If only the border color should be changed use the property `border-color`.

```
.border{ border-color:rgb(206, 174, 167) }
```

If you want to add a box shadow in that color use:

Here you see how a box with a 4 pixel `rgb(206, 174, 167)` colored shadow looks like.

```
.boxshadow{ -moz-box-shadow:4px 4px 4px  
4px rgb(206, 174, 167); -webkit-box-  
shadow:4px 4px 4px 4px rgb(206, 174, 167);  
box-shadow:4px 4px 4px 4px rgb(206, 174,  
167) }
```

Background

The CSS property to change the background color of an element to YIQ 182.7700, 21.3190, 4.6070 is called "background". The background property can be set on classes, ids or directly on the HTML element.

```
.background, #background, body{  
background: rgb(206, 174, 167) }
```

If only the background color should be changed can be used:

```
.background{ background-color: rgb(206,  
174, 167) }
```

This example shows the color as background, it is applied via the CSS property "background".

To optimize and compress your CSS code, you can use our [online CSS compressor and optimizer](#) based on csstidy. If you want to create a linear or radial gradient as background or border, check our [CSS Gradient Generator](#).

Hey! You found this booklet interesting? Support Converting Colors with the new Membership Option!

The pro membership hides all ads, plus gives you double the colors in the color bucket, and more awesome pro features!

[Learn more, Memberships starting at \\$2.50/m!](#)

**Follow me
on Twitter!**

@ConvertingColor