

Converting Colors

YIQ(182.7780, 9.6730, 6.4170)

Have a look what the booklet for
YIQ(182.7780, 9.6730, 6.4170)
contains.

| | |
|--|----|
| YIQ(182.7780, 9.6730, 6.4170) | 3 |
| <i>Conversions</i> | 4 |
| <i>Details</i> | 6 |
| <i>Harmonies</i> | 12 |
| <i>Previews</i> | 24 |
| <i>Color Blindness Simulation</i> | 28 |
| <i>CSS Examples</i> | 31 |

Color

**YIQ(182.7780, 9.6730,
6.4170)**

Conversions

Conversions Part 1

| Format | Color |
|-------------|---------------------------|
| Hex | C4B0B7 |
| RGB | 196, 176, 183 |
| RGB Percent | 77%, 69%, 72% |
| CMY | 0.2313, 0.3098, 0.2823 |
| CMYK | 0.00, 0.10, 0.07, 0.23 |
| HSL | 339°, 15%, 73% |
| HSV | 339°, 10%, 77% |
| XYZ | 46.8402, 46.2042, 51.2539 |
| YIQ | 182.7780, 9.6730, 6.4170 |

Conversions

Conversions Part 2

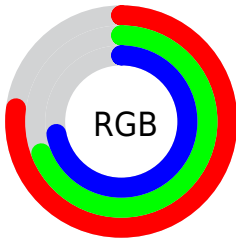
| Format | Color |
|-------------------------------------|------------------------------|
| RYB | 196, 176, 183 |
| Decimal | 12890295 |
| CIELab | 73.68, 8.40, -0.96 |
| CIELCh | 74, 8.452, 353.461 |
| Yxy | 46.2042, 0.3246, 0.3202 |
| Android (android.graphics.Color) | 4291080375 (0xFFC4B0B7) |
| YUV | 182.7780, 0.1094, 11.5957 |
| Hunter-Lab | 67.9736, 4.0493, 2.8754 |

Details

The YIQ color **182.7780, 9.6730, 6.4170** is a light color, and the websafe version is hex **CCCCCC**. A complement of this color would be **189.2220, -9.6730, -6.4170**, and the grayscale version is **183.0000, -0.0000, -0.0000**.

A 20% lighter version of the original color is **239.0770, 10.2690, 6.6290**, and **129.4790, 9.0770, 6.2050** is the 20% darker color. If you saturate the color by 10%, you get **169.5560, 19.3460, 12.8340**, and if you desaturate by 10%, it is **196.0000, -0.0000, -0.0000**.

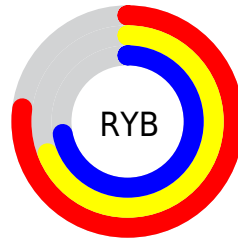
Distribution



Red (77%)

Green (69%)

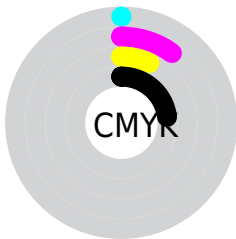
Blue (72%)



Red (77%)

Yellow (69%)

Blue (72%)

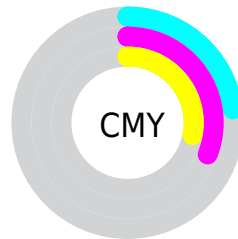


Cyan (0%)

Magenta (10%)

Yellow (7%)

Black (23%)



Cyan (23%)

Magenta (31%)

Yellow (28%)

Brightness & Saturation Gradients

These gradients show how the YIQ color 182.7780, 9.6730, 6.4170 changes by changing the brightness by 10 percent. The first figure shows a shift by +10% for each color and the second figure -10%.

Similar to the brightness gradients but the following saturation gradients show a change of the YIQ color 182.7780, 9.6730, 6.4170 by changing the saturation by 10% instead.

■ 182.7780, 9.6730,
6.4170

■ 182.7780, 9.6730,
6.4170

255.0000, -0.0000,
-0.0000

■ 155.7780, 9.6730,
6.4170

■ 239.0770, 10.2690,
6.6290

■ 129.4790, 9.0770,
6.2050

■ 105.0660, 8.8020,
5.6820

■ 80.7670, 8.2060,
5.4700

■ 57.4680, 7.6100,
5.2580

■ 36.0550, 7.3350,
4.7350

■ 13.5930, 8.7560,

6.5160

0.0000, 0.0000,
0.0000

182.7780, 9.6730,
6.4170

182.7780, 9.6730,
6.4170

169.5560, 19.3460,
12.8340

196.0000, -0.0000,
-0.0000

157.0350, 28.4230,
19.0390

208.5210, -9.0770,
-6.2050

143.8130, 38.0960,
25.4560

221.7430,
-18.7500, -12.6220

131.1780, 47.4940,
31.3500

234.3780,
-28.1480, -18.5160

117.9560, 57.1670,
37.7670

236.4470,
-32.5960, -14.9960

■ 104.8480, 66.5190,
44.4950

■ 237.3590,
-35.1640, -12.5080

■ 92.2130, 75.9170,
50.3890

■ 78.9910, 85.5900,
56.8060

■ 66.4700, 94.6670,
63.0110

Harmonies

Analogous

The Analogous color harmony consists of three colors that are next to each other on the color wheel.



182.3690, 3.5750, 6.7990



182.7780, 9.6730, 6.4170



182.4640, 13.4330, 4.3530

Triad

The Triadic color harmony groups three colors that are evenly spaced from another and form a triangle on the color wheel.



182.7780, 9.6730, 6.4170



179.9910, 4.2190, -4.8770



179.0460, -14.8090, -1.4410

Complementary

The Complementary color scheme is a pair of colors which are on the opposite of each other on the color wheel.



182.7780, 9.6730, 6.4170



189.2220, -9.6730, -6.4170

Split Complementary

Split-complementary colors differ from the complementary color scheme. The scheme consists of three colors, the original color and two neighbors of the complement color.



178.9380, -14.6250, -4.7770



182.7780, 9.6730, 6.4170



179.0440, -3.3000, -6.2760

Square

The Square scheme is like the rectangle color scheme, but the four colors are evenly spaced on the color wheel.



182.7780, 9.6730, 6.4170



181.0950, 9.8580, -2.4460



178.9230, -10.2690, -6.6290



180.3070, -11.0500, 2.0220

Rectangle

The Rectangle color scheme consists of four colors that form a rectangle on the color wheel.



182.7780, 9.6730, 6.4170



182.2960, 13.8460, 2.3740



178.9230, -10.2690, -6.6290



179.1060, -15.0380, -2.7980

Sweetspot

The Sweet Spot groups the original color and five complimentary colors.



182.7780, 9.6730, 6.4170



249.7340, 3.8050, 2.6290



182.1670, 1.3280, 8.9760



124.0220, 2.9340, 1.8940



0.0000, 0.0000, 0.0000



128.0000, -0.0000, -0.0000

Same Dimension

The Same Dimension uses a secret algorithm to generate beautiful new colors.



182.7780, 9.6730, 6.4170



234.5230, 14.9450, 9.9930



183.7410, 11.0950, 2.6710



90.4460, 4.6760, 3.3640



54.5230, 77.9800, 51.5480



11.2350, 15.8160, 10.7280

Inverse Universe

The Inverse Universe completely reimagines the original color for something new.



182.7780, 9.6730, 6.4170



234.5230, 14.9450, 9.9930



188.2590, -11.0950, -2.6710



90.4460, 4.6760, 3.3640



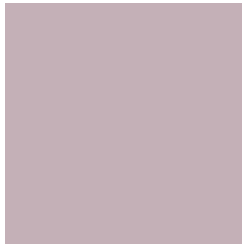
54.5230, 77.9800, 51.5480



11.2350, 15.8160, 10.7280

Previews

White Background



This preview shows how the YIQ color 182.7780, 9.6730, 6.4170 looks on a white background.

Color Contrast Check

Large Text (above 18pt) WCAG AA × Fail

Any Text WCAG AA × Fail

Large Text (above 18pt) WCAG AAA × Fail

Any Text WCAG AAA × Fail

Black Background



This preview shows how the YIQ color 182.7780, 9.6730, 6.4170 looks on a black background.

Color Contrast Check

Large Text (above 18pt) WCAG AA ✓ Pass

Any Text WCAG AA ✓ Pass

Large Text (above 18pt) WCAG AAA ✓ Pass

Any Text WCAG AAA ✓ Pass

If you want to check with other color combinations, try the [Color Contrast Checker](#).

YIQ 182.7780, 9.6730, 6.4170

Background



This preview shows how black text looks on a background with the YIQ color 182.7780, 9.6730, 6.4170.



This preview shows how white text looks on a background with the YIQ color 182.7780, 9.6730,

Color Blindness Simulation

Color vision deficiency is a very complex topic, and I could not describe the different causes any better than Wikipedia does, so if you want to learn more, you should check out their [article about color blindness](#).

Dichromacy



Original Color

182.7780, 9.6730, 6.4170

Protanopia

181.4670, 0.1830, 2.1910

Deuteranopia

182.7890, 11.1400, 7.3640



Tritanopia

183.1740, 8.6180, 9.0180

Trichromacy



Original Color

182.7780, 9.6730, 6.4170

Protanomaly

182.2610, 3.7590, 3.4630

Deuteranomaly

182.4900, 10.5440, 7.1520

Tritanomaly

182.9460, 9.2600, 8.3960

Monochromacy



Original Color

182.7780, 9.6730, 6.4170

Achromatopsia

183.0000, -0.0000, -0.0000

Achromatomaly

182.7340, 3.8050, 2.6290

CSS Examples

Text

The CSS property to change the color of the text to YIQ 182.7780, 9.6730, 6.4170 is called "color". The color property can be set on classes, ids or directly on the HTML element.

This example shows how text in the color `rgb(196, 176, 183)` looks like.

```
.text, #text, p{  
    color:rgb(196, 176, 183)  
}
```

If you want to add a text shadow in that color use the text-shadow property, you can generate a text shadow directly with our [CSS Text Shadow Generator](#).

Here you see how black text with a 4 pixel rgb(196, 176, 183) colored shadow looks like.

```
.shadow{ text-shadow: 4px 4px 2px rgb(196, 176, 183) }
```

Border

The CSS property to change the border of an element to YIQ 182.7780, 9.6730, 6.4170 is called "border". The border property can be set on classes, ids or directly on the HTML element.

This example shows the color as border, it can be applied via the CSS property "border" or "border-color".

```
.border, #border, table{ border:4px solid rgb(196, 176, 183) }
```


If only the border color should be changed use the property `border-color`.

```
.border{ border-color:rgb(196, 176, 183) }
```

If you want to add a box shadow in that color use:

Here you see how a box with a 4 pixel `rgb(196, 176, 183)` colored shadow looks like.

```
.boxshadow{ -moz-box-shadow:4px 4px 4px 4px rgb(196, 176, 183); -webkit-box-shadow:4px 4px 4px 4px rgb(196, 176, 183); box-shadow:4px 4px 4px 4px rgb(196, 176, 183) }
```

Background

The CSS property to change the background color of an element to YIQ 182.7780, 9.6730, 6.4170 is called "background". The background property can be set on classes, ids or directly on the HTML element.

```
.background, #background, body{  
background: rgb(196, 176, 183) }
```

If only the background color should be changed can be used:

```
.background{ background-color: rgb(196,  
176, 183) }
```

This example shows the color as background, it is applied via the CSS property "background".

To optimize and compress your CSS code, you can use our [online CSS compressor and optimizer](#) based on csstidy. If you want to create a linear or radial gradient as background or border, check our [CSS Gradient Generator](#).

Hey! You found this booklet interesting? Support Converting Colors with the new Membership Option!

The pro membership hides all ads, plus gives you double the colors in the color bucket, and more awesome pro features!

[Learn more, Memberships starting at \\$2.50/m!](#)

**Follow me
on Twitter!**

@ConvertingColor