

Converting Colors

YIQ(182.8720, 12.1040, 0.9040)

Have a look what the booklet for
YIQ(182.8720, 12.1040, 0.9040)
contains.

YIQ(182.8720, 12.1040, 0.9040)	3
<i>Conversions</i>	4
<i>Details</i>	6
<i>Harmonies</i>	12
<i>Previews</i>	24
<i>Color Blindness Simulation</i>	28
<i>CSS Examples</i>	31

Color

**YIQ(182.8720, 12.1040,
0.9040)**

Conversions

Conversions Part 1

Format	Color
Hex	C3B3AB
RGB	195, 179, 171
RGB Percent	76%, 70%, 67%
CMY	0.2353, 0.2980, 0.3294
CMYK	0.00, 0.08, 0.12, 0.24
HSL	20°, 17%, 72%
HSV	20°, 12%, 76%
XYZ	45.9786, 46.7815, 45.1414
YIQ	182.8720, 12.1040, 0.9040

Conversions

Conversions Part 2

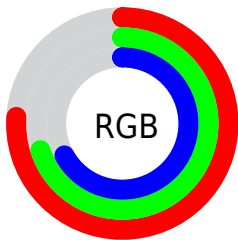
Format	Color
RYB	195, 183, 171
Decimal	12825515
CIELab	74.05, 4.36, 6.13
CIELCh	74, 7.518, 54.585
Yxy	46.7815, 0.3334, 0.3392
Android (android.graphics.Color)	4291015595 (0xFFC3B3AB)
YUV	182.8720, -5.8529, 10.6363
Hunter-Lab	68.3970, 0.2985, 8.7471

Details

The YIQ color $182.8720, 12.1040, 0.9040$ is a light color, and the websafe version is hex `CCCCCC`. A complement of this color would be $183.1280, -12.1040, -0.9040$, and the grayscale version is $183.0000, -0.0000, -0.0000$.

A 20% lighter version of the original color is $239.0570, 13.0210, 0.8050$, and $129.6870, 11.1870, 1.0030$ is the 20% darker color. If you saturate the color by 10%, you get $173.0750, 21.7780, 1.7940$, and if you desaturate by 10%, it is $192.7830, 2.1090, 0.3250$.

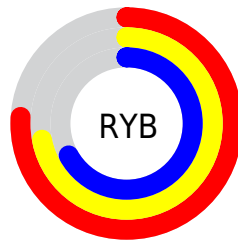
Distribution



Red (76%)

Green (70%)

Blue (67%)



Red (76%)

Yellow (72%)

Blue (67%)

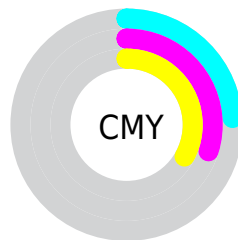


Cyan (0%)

Magenta (8%)

Yellow (12%)

Black (24%)



Cyan (24%)

Magenta (30%)

Yellow (33%)

Brightness & Saturation Gradients

These gradients show how the YIQ color 182.8720, 12.1040, 0.9040 changes by changing the brightness by 10 percent. The first figure shows a shift by +10% for each color and the second figure -10%.

Similar to the brightness gradients but the following saturation gradients show a change of the YIQ color 182.8720, 12.1040, 0.9040 by changing the saturation by 10% instead.

■ 182.8720, 12.1040,
0.9040

■ 182.8720, 12.1040,
0.9040

255.0000, -0.0000,
-0.0000

■ 155.9860, 11.7830,
1.2150

■ 239.0570, 13.0210,
0.8050

■ 129.6870, 11.1870,
1.0030

■ 104.6870, 11.1870,
1.0030

■ 80.5020, 10.2700,
1.1020

■ 57.7900, 9.3990,
0.3670

■ 35.9040, 9.0780,
0.6780

■ 14.2310, 12.4710,

-0.2410

0.0000, 0.0000,
0.0000

182.8720, 12.1040,
0.9040

182.8720, 12.1040,
0.9040

173.0750, 21.7780,
1.7940

192.7830, 2.1090,
0.3250

163.1640, 31.7730,
2.3730

202.5800, -7.5650,
-0.5650

153.3670, 41.4470,
3.2630

212.4910,
-17.5600, -1.1440

143.4560, 51.4420,
3.8420

222.2880,
-27.2340, -2.0340

133.6590, 61.1160,
4.7320

230.6030,
-32.7350, -6.9670

■ 123.7480, 71.1110,
5.3110

■ 237.0600,
-35.7600, -12.7200

■ 113.9510, 80.7850,
6.2010

■ 104.0400, 90.7800,
6.7800

■ 96.4600, 98.3450,
7.3450

Harmonies

Analogous

The Analogous color harmony consists of three colors that are next to each other on the color wheel.



183.5670, 11.6450, 3.7170



182.8720, 12.1040, 0.9040



181.9100, 8.9410, -2.3470

Triad

The Triadic color harmony groups three colors that are evenly spaced from another and form a triangle on the color wheel.



182.8720, 12.1040, 0.9040



179.9340, -8.8020, -5.6820



182.8950, -3.8980, 4.5660

Complementary

The Complementary color scheme is a pair of colors which are on the opposite of each other on the color wheel.



182.8720, 12.1040, 0.9040



183.1280, -12.1040, -0.9040

Split Complementary

Split-complementary colors differ from the complementary color scheme. The scheme consists of three colors, the original color and two neighbors of the complement color.



181.7910, -9.5370, 2.1350



182.8720, 12.1040, 0.9040



179.8350, -12.8370, -4.1410

Square

The Square scheme is like the rectangle color scheme, but the four colors are evenly spaced on the color wheel.



182.8720, 12.1040, 0.9040



180.4570, -3.0250, -5.7530



180.5300, -13.2960, -1.3280



183.5430, 3.0250, 5.7530

Rectangle

The Rectangle color scheme consists of four colors that form a rectangle on the color wheel.



182.8720, 12.1040, 0.9040



181.7030, 5.0900, -4.1420



180.5300, -13.2960, -1.3280



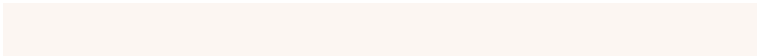
181.9980, -5.6860, 3.9300

Sweetspot

The Sweet Spot groups the original color and five complimentary colors.



182.8720, 12.1040, 0.9040



247.3380, 4.8600, 0.0280



180.0000, 9.1680, 10.0640



124.2670, 3.6220, 0.4380



0.0000, 0.0000, 0.0000



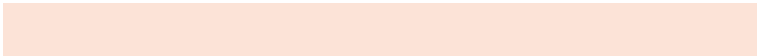
128.0000, -0.0000, -0.0000

Same Dimension

The Same Dimension uses a secret algorithm to generate beautiful new colors.



182.8720, 12.1040, 0.9040



233.1070, 18.7520, 1.5680



189.9160, 8.8040, -5.3720



91.7510, 5.1350, 0.5510



79.2500, 81.3810, 6.4130



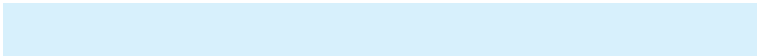
16.3240, 16.6430, 1.2430

Inverse Universe

The Inverse Universe completely reimagines the original color for something new.



183.1280, -12.1040, -0.9040



233.8930, -18.7520, -1.5680



176.0840, -8.8040, 5.3720



92.2490, -5.1350, -0.5510



81.1630, -81.1060, -5.8900



16.6760, -16.6430, -1.2430

Previews

White Background



This preview shows how the YIQ color 182.8720, 12.1040, 0.9040 looks on a white background.

Color Contrast Check

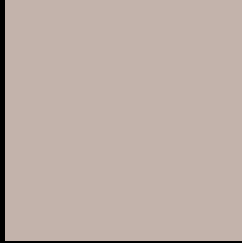
Large Text (above 18pt) WCAG AA × Fail

Any Text WCAG AA × Fail

Large Text (above 18pt) WCAG AAA × Fail

Any Text WCAG AAA × Fail

Black Background



This preview shows how the YIQ color 182.8720, 12.1040, 0.9040 looks on a black background.

Color Contrast Check

Large Text (above 18pt) WCAG AA ✓ Pass

Any Text WCAG AA ✓ Pass

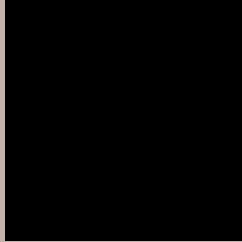
Large Text (above 18pt) WCAG AAA ✓ Pass

Any Text WCAG AAA ✓ Pass

If you want to check with other color combinations, try the [Color Contrast Checker](#).

YIQ 182.8720, 12.1040, 0.9040

Background



This preview shows how black text looks on a background with the YIQ color 182.8720, 12.1040, 0.9040.



This preview shows how white text looks on a background with the YIQ color 182.8720, 12.1040,

0.9040.

Color Blindness Simulation

Color vision deficiency is a very complex topic, and I could not describe the different causes any better than Wikipedia does, so if you want to learn more, you should check out their [article about color blindness](#).

Dichromacy



Original Color

182.8720, 12.1040, 0.9040

Protanopia

182.0670, 7.0610, -1.3150

Deuteranopia

183.9160, 17.9720, 4.6920



Tritanopia

184.1740, 8.6180, 9.0180

Trichromacy



Original Color

182.8720, 12.1040, 0.9040

Protanomaly

182.3770, 9.1240, -0.1560

Deuteranomaly

183.6060, 15.9090, 3.5330

Tritanomaly

183.6640, 9.9940, 6.1060

Monochromacy



Original Color

182.8720, 12.1040, 0.9040

Achromatopsia

183.0000, -0.0000, -0.0000

Achromatomaly

183.1530, 3.9430, 0.1270

CSS Examples

Text

The CSS property to change the color of the text to YIQ 182.8720, 12.1040, 0.9040 is called "color". The color property can be set on classes, ids or directly on the HTML element.

This example shows how text in the color `rgb(195, 179, 171)` looks like.

```
.text, #text, p{  
    color:rgb(195, 179, 171)  
}
```

If you want to add a text shadow in that color use the text-shadow property, you can generate a text shadow directly with our [CSS Text Shadow Generator](#).

Here you see how black text with a 4 pixel rgb(195, 179, 171) colored shadow looks like.

```
.shadow{ text-shadow: 4px 4px 2px rgb(195, 179, 171) }
```

Border

The CSS property to change the border of an element to YIQ 182.8720, 12.1040, 0.9040 is called "border". The border property can be set on classes, ids or directly on the HTML element.

This example shows the color as border, it can be applied via the CSS property "border" or "border-color".

```
.border, #border, table{ border:4px solid rgb(195, 179, 171) }
```


If only the border color should be changed use the property `border-color`.

```
.border{ border-color:rgb(195, 179, 171) }
```

If you want to add a box shadow in that color use:

Here you see how a box with a 4 pixel `rgb(195, 179, 171)` colored shadow looks like.

```
.boxshadow{ -moz-box-shadow:4px 4px 4px  
4px rgb(195, 179, 171); -webkit-box-  
shadow:4px 4px 4px 4px rgb(195, 179, 171);  
box-shadow:4px 4px 4px 4px rgb(195, 179,  
171) }
```

Background

The CSS property to change the background color of an element to YIQ 182.8720, 12.1040, 0.9040 is called "background". The background property can be set on classes, ids or directly on the HTML element.

```
.background, #background, body{  
background: rgb(195, 179, 171) }
```

If only the background color should be changed can be used:

```
.background{ background-color: rgb(195,  
179, 171) }
```

This example shows the color as background, it is applied via the CSS property "background".

To optimize and compress your CSS code, you can use our [online CSS compressor and optimizer](#) based on csstidy. If you want to create a linear or radial gradient as background or border, check our [CSS Gradient Generator](#).

Hey! You found this booklet interesting? Support Converting Colors with the new Membership Option!

The pro membership hides all ads, plus gives you double the colors in the color bucket, and more awesome pro features!

[Learn more, Memberships starting at \\$2.50/m!](#)

**Follow me
on Twitter!**

@ConvertingColor