

Converting Colors

YIQ(183.2140, 11.1410, 1.8370)

Have a look what the booklet for
YIQ(183.2140, 11.1410, 1.8370)
contains.

YIQ(183.2140, 11.1410, 1.8370)	3
<i>Conversions</i>	4
<i>Details</i>	6
<i>Harmonies</i>	12
<i>Previews</i>	24
<i>Color Blindness Simulation</i>	28
<i>CSS Examples</i>	31

Color

**YIQ(183.2140, 11.1410,
1.8370)**

Conversions

Conversions Part 1

Format	Color
Hex	C3B3AE
RGB	195, 179, 174
RGB Percent	76%, 70%, 68%
CMY	0.2353, 0.2980, 0.3176
CMYK	0.00, 0.08, 0.11, 0.24
HSL	14°, 15%, 72%
HSV	14°, 11%, 76%
XYZ	46.2679, 46.8973, 46.6642
YIQ	183.2140, 11.1410, 1.8370

Conversions

Conversions Part 2

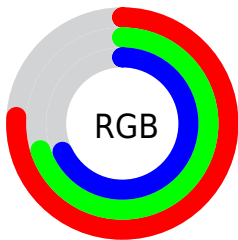
Format	Color
RYB	195, 181, 174
Decimal	12825518
CIELab	74.12, 4.86, 4.60
CIELCh	74, 6.688, 43.414
Yxy	46.8973, 0.3309, 0.3354
Android (android.graphics.Color)	4291015598 (0xFFC3B3AE)
YUV	183.2140, -4.5425, 10.3363
Hunter-Lab	68.4816, 0.7564, 7.5362

Details

The YIQ color $183.2140, 11.1410, 1.8370$ is a light color, and the websafe version is hex `CCCCCC`. A complement of this color would be $185.7860, -11.1410, -1.8370$, and the grayscale version is $183.0000, -0.0000, -0.0000$.

A 20% lighter version of the original color is $239.3990, 12.0580, 1.7380$, and $130.0290, 10.2240, 1.9360$ is the 20% darker color. If you saturate the color by 10%, you get $172.2430, 21.3650, 3.7730$, and if you desaturate by 10%, it is $194.2990, 0.5960, 0.2120$.

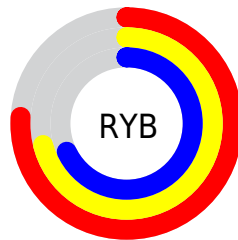
Distribution



Red (76%)

Green (70%)

Blue (68%)



Red (76%)

Yellow (71%)

Blue (68%)

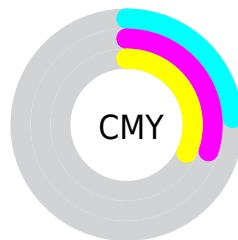


Cyan (0%)

Magenta (8%)

Yellow (11%)

Black (24%)



Cyan (24%)

Magenta (30%)

Yellow (32%)

Brightness & Saturation Gradients

These gradients show how the YIQ color 183.2140, 11.1410, 1.8370 changes by changing the brightness by 10 percent. The first figure shows a shift by +10% for each color and the second figure -10%.

Similar to the brightness gradients but the following saturation gradients show a change of the YIQ color 183.2140, 11.1410, 1.8370 by changing the saturation by 10% instead.

■ 183.2140, 11.1410,
1.8370

■ 183.2140, 11.1410,
1.8370

255.0000, -0.0000,
-0.0000

■ 156.2140, 11.1410,
1.8370

■ 239.3990, 12.0580,
1.7380

■ 130.0290, 10.2240,
1.9360

■ 105.0290, 10.2240,
1.9360

■ 80.7300, 9.6280,
1.7240

■ 58.1320, 8.4360,
1.3000

■ 36.2460, 8.1150,
1.6110

■ 14.3880, 10.5910,

0.7910

■ 0.0000, 0.0000,
0.0000

■ 183.2140, 11.1410,
1.8370

■ 183.2140, 11.1410,
1.8370

■ 172.2430, 21.3650,
3.7730

■ 194.2990, 0.5960,
0.2120

■ 161.1580, 31.9100,
5.3980

■ 205.2700, -9.6280,
-1.7240

■ 150.1870, 42.1340,
7.3340

■ 216.3550,
-20.1730, -3.3490

■ 139.6890, 52.4040,
8.4360

■ 226.7390,
-30.1220, -4.7620

■ 128.7180, 62.6280,
10.3720

■ 235.8860,
-35.2100, -11.6740

■ 117.6330, 73.1730,
11.9970

■ 237.0600,
-35.7600, -12.7200

■ 106.6620, 83.3970,
13.9330

■ 95.5770, 93.9420,
15.5580

■ 85.3070, 103.5700,
17.2820

Harmonies

Analogous

The Analogous color harmony consists of three colors that are next to each other on the color wheel.



183.6100, 10.0860, 4.4380



183.2140, 11.1410, 1.8370



182.8500, 9.1700, -0.9900

Triad

The Triadic color harmony groups three colors that are evenly spaced from another and form a triangle on the color wheel.



183.2140, 11.1410, 1.8370



180.7170, -6.6930, -5.3570



182.4710, -5.6400, 3.0960

Complementary

The Complementary color scheme is a pair of colors which are on the opposite of each other on the color wheel.



183.2140, 11.1410, 1.8370



185.7860, -11.1410, -1.8370

Split Complementary

Split-complementary colors differ from the complementary color scheme. The scheme consists of three colors, the original color and two neighbors of the complement color.



181.5520, -10.3620, 0.5660



183.2140, 11.1410, 1.8370



180.5040, -10.4070, -4.1270

Square

The Square scheme is like the rectangle color scheme, but the four colors are evenly spaced on the color wheel.



183.2140, 11.1410, 1.8370



181.2400, -0.9160, -5.4280



180.4870, -11.7370, -2.0490



183.3470, 0.6410, 4.9050

Rectangle

The Rectangle color scheme consists of four colors that form a rectangle on the color wheel.



183.2140, 11.1410, 1.8370



182.1270, 6.8320, -2.6720



180.4870, -11.7370, -2.0490



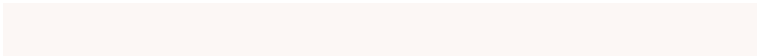
181.8730, -6.8320, 2.6720

Sweetspot

The Sweet Spot groups the original color and five complimentary colors.



183.2140, 11.1410, 1.8370



248.2670, 3.6220, 0.4380



182.1030, 7.3800, 9.4280



124.9680, 3.0260, 0.2260



0.0000, 0.0000, 0.0000



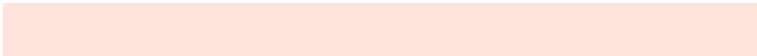
128.0000, -0.0000, -0.0000

Same Dimension

The Same Dimension uses a secret algorithm to generate beautiful new colors.



183.2140, 11.1410, 1.8370



233.6770, 17.1470, 3.1230



189.0840, 8.3910, -3.3930



91.7510, 5.1350, 0.5510



70.4450, 85.5060, 14.2580



14.5630, 17.4680, 2.8120

Inverse Universe

The Inverse Universe completely reimagines the original color for something new.



185.7860, -11.1410, -1.8370



238.3230, -17.1470, -3.1230



179.9160, -8.3910, 3.3930



92.8360, -5.4100, -1.0740



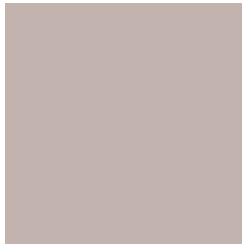
90.5550, -85.5060, -14.2580



18.4370, -17.4680, -2.8120

Previews

White Background



This preview shows how the YIQ color 183.2140, 11.1410, 1.8370 looks on a white background.

Color Contrast Check

Large Text (above 18pt) WCAG AA × Fail

Any Text WCAG AA × Fail

Large Text (above 18pt) WCAG AAA × Fail

Any Text WCAG AAA × Fail

Black Background



This preview shows how the YIQ color 183.2140, 11.1410, 1.8370 looks on a black background.

Color Contrast Check

Large Text (above 18pt) WCAG AA ✓ Pass

Any Text WCAG AA ✓ Pass

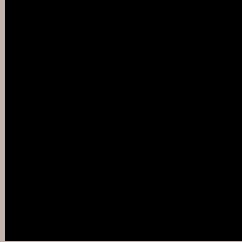
Large Text (above 18pt) WCAG AAA ✓ Pass

Any Text WCAG AAA ✓ Pass

If you want to check with other color combinations, try the [Color Contrast Checker](#).

YIQ 183.2140, 11.1410, 1.8370

Background



This preview shows how black text looks on a background with the YIQ color 183.2140, 11.1410, 1.8370.



This preview shows how white text looks on a background with the YIQ color 183.2140, 11.1410,

1.8370.

Color Blindness Simulation

Color vision deficiency is a very complex topic, and I could not describe the different causes any better than Wikipedia does, so if you want to learn more, you should check out their [article about color blindness](#).

Dichromacy



Original Color

183.2140, 11.1410, 1.8370

Protanopia

182.6970, 5.2270, -1.1170

Deuteranopia

183.9590, 16.4130, 5.4130



Tritanopia

184.4620, 7.7470, 8.2830

Trichromacy



Original Color

183.2140, 11.1410, 1.8370

Protanomaly

183.0070, 7.2900, 0.0420

Deuteranomaly

183.6490, 14.3500, 4.2540

Tritanomaly

184.0660, 8.8020, 5.6820

Monochromacy



Original Color

183.2140, 11.1410, 1.8370

Achromatopsia

183.0000, -0.0000, -0.0000

Achromatomaly

183.2670, 3.6220, 0.4380

CSS Examples

Text

The CSS property to change the color of the text to YIQ 183.2140, 11.1410, 1.8370 is called "color". The color property can be set on classes, ids or directly on the HTML element.

This example shows how text in the color `rgb(195, 179, 174)` looks like.

```
.text, #text, p{  
    color:rgb(195, 179, 174)  
}
```

If you want to add a text shadow in that color use the text-shadow property, you can generate a text shadow directly with our [CSS Text Shadow Generator](#).

Here you see how black text with a 4 pixel rgb(195, 179, 174) colored shadow looks like.

```
.shadow{ text-shadow: 4px 4px 2px rgb(195, 179, 174) }
```

Border

The CSS property to change the border of an element to YIQ 183.2140, 11.1410, 1.8370 is called "border". The border property can be set on classes, ids or directly on the HTML element.

This example shows the color as border, it can be applied via the CSS property "border" or "border-color".

```
.border, #border, table{ border:4px solid rgb(195, 179, 174) }
```


If only the border color should be changed use the property `border-color`.

```
.border{ border-color:rgb(195, 179, 174) }
```

If you want to add a box shadow in that color use:

Here you see how a box with a 4 pixel `rgb(195, 179, 174)` colored shadow looks like.

```
.boxshadow{ -moz-box-shadow:4px 4px 4px  
4px rgb(195, 179, 174); -webkit-box-  
shadow:4px 4px 4px 4px rgb(195, 179, 174);  
box-shadow:4px 4px 4px 4px rgb(195, 179,  
174) }
```

Background

The CSS property to change the background color of an element to YIQ 183.2140, 11.1410, 1.8370 is called "background". The background property can be set on classes, ids or directly on the HTML element.

```
.background, #background, body{  
background: rgb(195, 179, 174) }
```

If only the background color should be changed can be used:

```
.background{ background-color: rgb(195,  
179, 174) }
```

This example shows the color as background, it is applied via the CSS property "background".

To optimize and compress your CSS code, you can use our [online CSS compressor and optimizer](#) based on csstidy. If you want to create a linear or radial gradient as background or border, check our [CSS Gradient Generator](#).

Hey! You found this booklet interesting? Support Converting Colors with the new Membership Option!

The pro membership hides all ads, plus gives you double the colors in the color bucket, and more awesome pro features!

[Learn more, Memberships starting at \\$2.50/m!](#)

**Follow me
on Twitter!**

@ConvertingColor