

Converting Colors

YIQ(183.8770, 30.9030, -3.8890)

Have a look what the booklet for
YIQ(183.8770, 30.9030, -3.8890)
contains.

YIQ(183.8770, 30.9030, -3.8890)	3
<i>Conversions</i>	4
<i>Details</i>	6
<i>Harmonies</i>	12
<i>Previews</i>	24
<i>Color Blindness Simulation</i>	28
<i>CSS Examples</i>	31

Color

**YIQ(183.8770, 30.9030,
-3.8890)**

Conversions

Conversions Part 1

Format	Color
Hex	D3B28F
RGB	211, 178, 143
RGB Percent	83%, 70%, 56%
CMY	0.1725, 0.3020, 0.4391
CMYK	0.00, 0.16, 0.32, 0.17
HSL	31°, 44%, 69%
HSV	31°, 32%, 83%
XYZ	47.7466, 47.6706, 32.6866
YIQ	183.8770, 30.9030, -3.8890

Conversions

Conversions Part 2

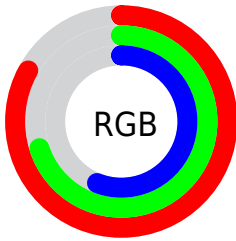
Format	Color
R _Y B	207, 211, 143
Decimal	13873807
CIE Lab	74.62, 6.88, 22.32
CIE LCh	75, 23.356, 72.866
Yxy	47.6706, 0.3727, 0.3721
Android (android.graphics.Color)	4292063887 (0xFFD3B28F)
YUV	183.8770, -20.1524, 23.7869
Hunter-Lab	69.0439, 2.6129, 20.2618

Details

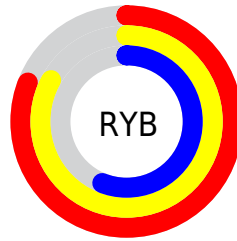
The YIQ color **183.8770, 30.9030, -3.8890** is a light color, and the websafe version is hex **CC9966**. A complement of this color would be **170.1230, -30.9030, 3.8890**, and the grayscale version is **184.0000, 0.0000, -0.0000**.

A 20% lighter version of the original color is **236.0610, 24.3930, -7.0550**, and **130.2080, 28.4730, -3.9030** is the 20% darker color. If you saturate the color by 10%, you get **175.6130, 40.3940, -5.1900**, and if you desaturate by 10%, it is **192.1410, 21.4120, -2.5880**.

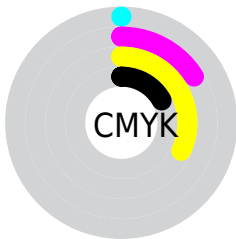
Distribution



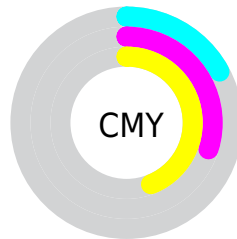
- Red (83%)
- Green (70%)
- Blue (56%)



- Red (81%)
- Yellow (83%)
- Blue (56%)



- Cyan (0%)
- Magenta (16%)
- Yellow (32%)
- Black (17%)



- Cyan (17%)
- Magenta (30%)
- Yellow (44%)

Brightness & Saturation Gradients

These gradients show how the YIQ color 183.8770, 30.9030, -3.8890 changes by changing the brightness by 10 percent. The first figure shows a shift by +10% for each color and the second figure -10%.

Similar to the brightness gradients but the following saturation gradients show a change of the YIQ color 183.8770, 30.9030, -3.8890 by changing the saturation by 10% instead.

■ 183.8770, 30.9030,
-3.8890

■ 183.8770, 30.9030,
-3.8890

255.0000, -0.0000,
-0.0000

■ 156.6920, 29.9860,
-3.7900

■ 236.0610, 24.3930,
-7.0550

■ 130.2080, 28.4730,
-3.9030

■ 251.5800, 9.6300,
-9.3300

■ 105.1370, 27.2350,
-3.4930

254.8860, 0.3210,
-0.3110

■ 81.2400, 25.4470,
-4.1290

■ 57.4570, 23.3380,
-4.4540

■ 35.5170, 23.1090,
-5.8110

■ 15.4270, 14.8550,

0.6070

0.0000, 0.0000,
0.0000

183.8770, 30.9030,
-3.8890

183.8770, 30.9030,
-3.8890

175.6130, 40.3940,
-5.1900

192.1410, 21.4120,
-2.5880

166.7620, 50.1600,
-5.9680

200.4050, 11.9210,
-1.2870

158.4980, 59.6510,
-7.2690

209.2560, 2.1550,
-0.5090

150.2340, 69.1420,
-8.5700

217.5200, -7.3360,
0.7920

141.9700, 78.6330,
-9.8710

225.8980,
-17.1480, 2.4040

■ 133.0050, 88.7200,
-10.9600

■ 232.4520,
-21.8240, -0.9600

■ 127.0720, 95.7810,
-12.2750

■ 238.9090,
-24.8490, -6.7130

■ 241.8440,
-26.2240, -9.3280

Harmonies

Analogous

The Analogous color harmony consists of three colors that are next to each other on the color wheel.



185.9090, 37.0450, 5.9490



183.8770, 30.9030, -3.8890



181.5930, 16.7830, -12.3130

Triad

The Triadic color harmony groups three colors that are evenly spaced from another and form a triangle on the color wheel.



183.8770, 30.9030, -3.8890



174.6140, -40.4360, -16.0840



186.7360, 1.4640, 17.5280

Complementary

The Complementary color scheme is a pair of colors which are on the opposite of each other on the color wheel.



183.8770, 30.9030, -3.8890



170.1230, -30.9030, 3.8890

Split Complementary

Split-complementary colors differ from the complementary color scheme. The scheme consists of three colors, the original color and two neighbors of the complement color.



183.6130, -20.3590, 11.0410



183.8770, 30.9030, -3.8890



175.4210, -46.9020, -9.0300

Square

The Square scheme is like the rectangle color scheme, but the four colors are evenly spaced on the color wheel.



183.8770, 30.9030, -3.8890



176.3030, -23.5630, -19.0110



179.2360, -38.6510, 1.1330



187.7290, 20.5370, 18.7850

Rectangle

The Rectangle color scheme consists of four colors that form a rectangle on the color wheel.



183.8770, 30.9030, -3.8890



179.7270, 4.5420, -16.2420



179.2360, -38.6510, 1.1330



185.7890, -6.0550, 16.1290

Sweetspot

The Sweet Spot groups the original color and five complimentary colors.



183.8770, 30.9030, -3.8890



245.1060, 11.3250, -1.4990



167.2080, 29.6140, 24.9900



121.4800, 7.3360, -0.7920



0.0000, 0.0000, 0.0000



128.0000, -0.0000, -0.0000

Same Dimension

The Same Dimension uses a secret algorithm to generate beautiful new colors.



183.8770, 30.9030, -3.8890



215.5380, 44.9790, -5.6850



203.2480, 21.8280, -21.1480



100.2240, 5.1810, -0.2830



101.3010, 76.2030, -9.8850



24.5860, 18.6610, -2.2910

Inverse Universe

The Inverse Universe completely reimagines the original color for something new.



170.1230, -30.9030, 3.8890



195.4620, -44.9790, 5.6850



150.7520, -21.8280, 21.1480



98.1890, -4.9060, 0.8060



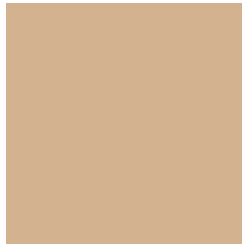
67.2860, -76.4780, 9.3620



16.4140, -18.6610, 2.2910

Previews

White Background



This preview shows how the YIQ color 183.8770, 30.9030, -3.8890 looks on a white background.

Color Contrast Check

Large Text (above 18pt) WCAG AA × Fail

Any Text WCAG AA × Fail

Large Text (above 18pt) WCAG AAA × Fail

Any Text WCAG AAA × Fail

Black Background



This preview shows how the YIQ color 183.8770, 30.9030, -3.8890 looks on a black background.

Color Contrast Check

Large Text (above 18pt) WCAG AA ✓ Pass

Any Text WCAG AA ✓ Pass

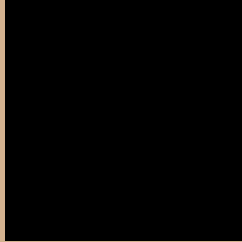
Large Text (above 18pt) WCAG AAA ✓ Pass

Any Text WCAG AAA ✓ Pass

If you want to check with other color combinations, try the [Color Contrast Checker](#).

YIQ 183.8770, 30.9030, -3.8890

Background



This preview shows how black text looks on a background with the YIQ color 183.8770, 30.9030, -3.8890.



This preview shows how white text looks on a background with the YIQ color 183.8770, 30.9030,

-3.8890.

Color Blindness Simulation

Color vision deficiency is a very complex topic, and I could not describe the different causes any better than Wikipedia does, so if you want to learn more, you should check out their [article about color blindness](#).

Dichromacy



Original Color

183.8770, 30.9030, -3.8890

Protanopia

182.3700, 19.0290, -8.9630

Deuteranopia

183.8990, 33.8370, -1.9950



Tritanopia

186.7520, 21.7300, 13.6820

Trichromacy



Original Color

183.8770, 30.9030, -3.8890

Protanomaly

182.8760, 23.4760, -6.9560

Deuteranomaly

184.1870, 32.9660, -2.7300

Tritanomaly

185.5040, 25.1240, 7.2360

Monochromacy



Original Color

183.8770, 30.9030, -3.8890

Achromatopsia

184.0000, 0.0000, -0.0000

Achromatomaly

184.1060, 11.3250, -1.4990

CSS Examples

Text

The CSS property to change the color of the text to YIQ 183.8770, 30.9030, -3.8890 is called "color". The color property can be set on classes, ids or directly on the HTML element.

This example shows how text in the color `rgb(211, 178, 143)` looks like.

```
.text, #text, p{  
    color:rgb(211, 178, 143)  
}
```

If you want to add a text shadow in that color use the text-shadow property, you can generate a text shadow directly with our [CSS Text Shadow Generator](#).

Here you see how black text with a 4 pixel rgb(211, 178, 143) colored shadow looks like.

```
.shadow{ text-shadow: 4px 4px 2px rgb(211, 178, 143) }
```

Border

The CSS property to change the border of an element to YIQ 183.8770, 30.9030, -3.8890 is called "border". The border property can be set on classes, ids or directly on the HTML element.

This example shows the color as border, it can be applied via the CSS property "border" or "border-color".

```
.border, #border, table{ border:4px solid rgb(211, 178, 143) }
```


If only the border color should be changed use the property `border-color`.

```
.border{ border-color:rgb(211, 178, 143) }
```

If you want to add a box shadow in that color use:

Here you see how a box with a 4 pixel `rgb(211, 178, 143)` colored shadow looks like.

```
.boxshadow{ -moz-box-shadow:4px 4px 4px  
4px rgb(211, 178, 143); -webkit-box-  
shadow:4px 4px 4px 4px rgb(211, 178, 143);  
box-shadow:4px 4px 4px 4px rgb(211, 178,  
143) }
```

Background

The CSS property to change the background color of an element to YIQ 183.8770, 30.9030, -3.8890 is called "background". The background property can be set on classes, ids or directly on the HTML element.

```
.background, #background, body{  
background: rgb(211, 178, 143) }
```

If only the background color should be changed can be used:

```
.background{ background-color: rgb(211,  
178, 143) }
```

This example shows the color as background, it is applied via the CSS property "background".

To optimize and compress your CSS code, you can use our [online CSS compressor and optimizer](#) based on csstidy. If you want to create a linear or radial gradient as background or border, check our [CSS Gradient Generator](#).

Hey! You found this booklet interesting? Support Converting Colors with the new Membership Option!

The pro membership hides all ads, plus gives you double the colors in the color bucket, and more awesome pro features!

[Learn more, Memberships starting at \\$2.50/m!](#)

**Follow me
on Twitter!**

@ConvertingColor