

Converting Colors

YIQ(183.8840, 20.9980, 4.9180)

Have a look what the booklet for
YIQ(183.8840, 20.9980, 4.9180)
contains.

YIQ(183.8840, 20.9980, 4.9180)	3
<i>Conversions</i>	4
<i>Details</i>	6
<i>Harmonies</i>	12
<i>Previews</i>	24
<i>Color Blindness Simulation</i>	28
<i>CSS Examples</i>	31

Color

**YIQ(183.8840, 20.9980,
4.9180)**

Conversions

Conversions Part 1

Format	Color
Hex	CFAFA9
RGB	207, 175, 169
RGB Percent	81%, 69%, 66%
CMY	0.1882, 0.3138, 0.3372
CMYK	0.00, 0.15, 0.18, 0.19
HSL	9°, 28%, 74%
HSV	9°, 18%, 81%
XYZ	48.2282, 46.7882, 44.0363
YIQ	183.8840, 20.9980, 4.9180

Conversions

Conversions Part 2

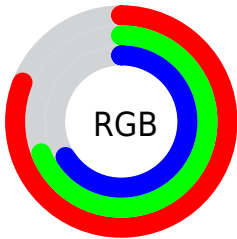
Format	Color
R_{YB}	207, 176, 169
Decimal	13610921
CIE _{Lab}	74.05, 10.64, 7.36
CIE _{LCh}	74, 12.937, 34.683
Yxy	46.7882, 0.3468, 0.3365
Android (android.graphics.Color)	4291801001 (0xFFCFafa9)
YUV	183.8840, -7.3378, 20.2727
Hunter-Lab	68.4019, 6.1519, 9.7112

Details

The YIQ color **183.8840, 20.9980, 4.9180** is a light color, and the websafe version is hex **CC9999**. A complement of this color would be **192.1160, -20.9980, -4.9180**, and the grayscale version is **184.0000, 0.0000, -0.0000**.

A 20% lighter version of the original color is **237.3780, 16.5510, 2.9110**, and **130.9870, 19.2100, 4.2820** is the 20% darker color. If you saturate the color by 10%, you get **171.5110, 32.4140, 7.2780**, and if you desaturate by 10%, it is **196.2570, 9.5820, 2.5580**.

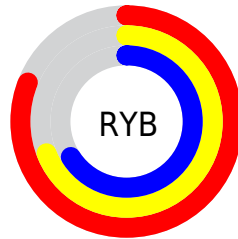
Distribution



Red (81%)

Green (69%)

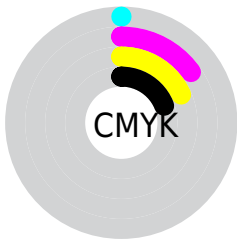
Blue (66%)



Red (81%)

Yellow (69%)

Blue (66%)

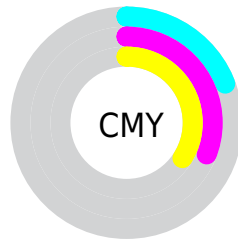


Cyan (0%)

Magenta (15%)

Yellow (18%)

Black (19%)



Cyan (19%)

Magenta (31%)

Yellow (34%)

Brightness & Saturation Gradients

These gradients show how the YIQ color 183.8840, 20.9980, 4.9180 changes by changing the brightness by 10 percent. The first figure shows a shift by +10% for each color and the second figure -10%.

Similar to the brightness gradients but the following saturation gradients show a change of the YIQ color 183.8840, 20.9980, 4.9180 by changing the saturation by 10% instead.

■ 183.8840, 20.9980,
4.9180

■ 183.8840, 20.9980,
4.9180

■ 255.0000, -0.0000,
-0.0000

■ 156.6990, 20.0810,
5.0170

■ 237.3780, 16.5510,
2.9110

■ 130.9870, 19.2100,
4.2820

■ 254.7720, 0.6420,
-0.6220

■ 105.6880, 18.6140,
4.0700

■ 81.5030, 17.6970,
4.1690

■ 58.0190, 16.1840,
4.0560

■ 36.4210, 14.9920,
3.6320

■ 13.3890, 18.0180,

3.8580

0.0000, 0.0000,
0.0000

183.8840, 20.9980,
4.9180

183.8840, 20.9980,
4.9180

171.5110, 32.4140,
7.2780

196.2570, 9.5820,
2.5580

158.6650, 43.7840,
10.4720

209.1030, -1.7880,
-0.6360

146.2920, 55.2000,
12.8320

221.4760,
-13.2040, -2.9960

133.3320, 66.8910,
15.7150

234.4360,
-24.8950, -5.8790

121.0730, 77.9860,
18.3860

240.6480,
-28.6080, -10.1760

■ 108.1130, 89.6770,
21.2690

■ 95.7400, 101.0930,
23.6290

■ 82.7800, 112.7840,
26.5120

■ 81.2640, 114.2970,
26.6250

Harmonies

Analogous

The Analogous color harmony consists of three colors that are next to each other on the color wheel.



184.6650, 17.4210, 9.1730



183.8840, 20.9980, 4.9180



182.9390, 19.1650, -0.4110

Triad

The Triadic color harmony groups three colors that are evenly spaced from another and form a triangle on the color wheel.



183.8840, 20.9980, 4.9180



178.7010, -9.7640, -10.2760



181.6320, -13.3430, 5.0330

Complementary

The Complementary color scheme is a pair of colors which are on the opposite of each other on the color wheel.



183.8840, 20.9980, 4.9180



192.1160, -20.9980, -4.9180

Split Complementary

Split-complementary colors differ from the complementary color scheme. The scheme consists of three colors, the original color and two neighbors of the complement color.



179.8650, -21.5490, -0.4370



183.8840, 20.9980, 4.9180



177.9650, -19.2550, -8.9750

Square

The Square scheme is like the rectangle color scheme, but the four colors are evenly spaced on the color wheel.



183.8840, 20.9980, 4.9180



179.6870, 2.0190, -9.0610



178.0340, -23.7030, -5.4550



183.4270, -2.3400, 9.3720

Rectangle

The Rectangle color scheme consists of four colors that form a rectangle on the color wheel.



183.8840, 20.9980, 4.9180



181.7920, 15.0850, -3.5630



178.0340, -23.7030, -5.4550



181.3110, -16.8730, 2.9270

Sweetspot

The Sweet Spot groups the original color and five complimentary colors.



183.8840, 20.9980, 4.9180



245.6590, 8.3900, 2.1340



184.0100, 12.3760, 18.0080



122.2780, 5.0890, 1.3850



0.0000, 0.0000, 0.0000



128.0000, -0.0000, -0.0000

Same Dimension

The Same Dimension uses a secret algorithm to generate beautiful new colors.



183.8840, 20.9980, 4.9180



221.0270, 30.9010, 7.1650



195.0370, 15.7730, -5.0190



98.4630, 6.0060, 1.2860



65.4940, 92.9780, 22.0180



15.7810, 22.7860, 5.5540

Inverse Universe

The Inverse Universe completely reimagines the original color for something new.



192.1160, -20.9980, -4.9180



232.9730, -30.9010, -7.1650



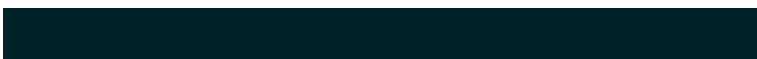
180.9630, -15.7730, 5.0190



100.5370, -6.0060, -1.2860



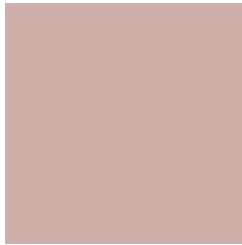
102.5060, -92.9780, -22.0180



24.6320, -22.5110, -5.0310

Previews

White Background



This preview shows how the YIQ color 183.8840, 20.9980, 4.9180 looks on a white background.

Color Contrast Check

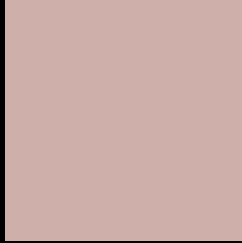
Large Text (above 18pt) WCAG AA × Fail

Any Text WCAG AA × Fail

Large Text (above 18pt) WCAG AAA × Fail

Any Text WCAG AAA × Fail

Black Background



This preview shows how the YIQ color 183.8840, 20.9980, 4.9180 looks on a black background.

Color Contrast Check

Large Text (above 18pt) WCAG AA ✓ Pass

Any Text WCAG AA ✓ Pass

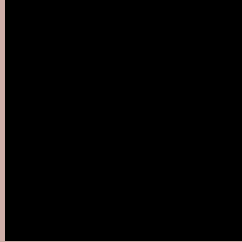
Large Text (above 18pt) WCAG AAA ✓ Pass

Any Text WCAG AAA ✓ Pass

If you want to check with other color combinations, try the [Color Contrast Checker](#).

YIQ 183.8840, 20.9980, 4.9180

Background



This preview shows how black text looks on a background with the YIQ color 183.8840, 20.9980, 4.9180.



This preview shows how white text looks on a background with the YIQ color 183.8840, 20.9980,

4.9180.

Color Blindness Simulation

Color vision deficiency is a very complex topic, and I could not describe the different causes any better than Wikipedia does, so if you want to learn more, you should check out their [article about color blindness](#).

Dichromacy



Original Color

183.8840, 20.9980, 4.9180

Protanopia

182.1810, 6.7400, -1.0040

Deuteranopia

183.8730, 19.5310, 3.9710



Tritanopia

184.6590, 17.5580, 12.1980

Trichromacy



Original Color

183.8840, 20.9980, 4.9180

Protanomaly

182.9860, 11.7830, 1.2150

Deuteranomaly

184.1720, 20.1270, 4.1830

Tritanomaly

184.2630, 18.6130, 9.5970

Monochromacy



Original Color

183.8840, 20.9980, 4.9180

Achromatopsia

184.0000, 0.0000, -0.0000

Achromatomaly

184.0610, 7.1980, 1.7100

CSS Examples

Text

The CSS property to change the color of the text to YIQ 183.8840, 20.9980, 4.9180 is called "color". The color property can be set on classes, ids or directly on the HTML element.

This example shows how text in the color `rgb(207, 175, 169)` looks like.

```
.text, #text, p{  
    color:rgb(207, 175, 169)  
}
```

If you want to add a text shadow in that color use the text-shadow property, you can generate a text shadow directly with our [CSS Text Shadow Generator](#).

Here you see how black text with a 4 pixel rgb(207, 175, 169) colored shadow looks like.

```
.shadow{ text-shadow: 4px 4px 2px rgb(207, 175, 169) }
```

Border

The CSS property to change the border of an element to YIQ 183.8840, 20.9980, 4.9180 is called "border". The border property can be set on classes, ids or directly on the HTML element.

This example shows the color as border, it can be applied via the CSS property "border" or "border-color".

```
.border, #border, table{ border:4px solid rgb(207, 175, 169) }
```


If only the border color should be changed use the property `border-color`.

```
.border{ border-color:rgb(207, 175, 169) }
```

If you want to add a box shadow in that color use:

Here you see how a box with a 4 pixel `rgb(207, 175, 169)` colored shadow looks like.

```
.boxshadow{ -moz-box-shadow:4px 4px 4px  
4px rgb(207, 175, 169); -webkit-box-  
shadow:4px 4px 4px 4px rgb(207, 175, 169);  
box-shadow:4px 4px 4px 4px rgb(207, 175,  
169) }
```

Background

The CSS property to change the background color of an element to YIQ 183.8840, 20.9980, 4.9180 is called "background". The background property can be set on classes, ids or directly on the HTML element.

```
.background, #background, body{  
background: rgb(207, 175, 169) }
```

If only the background color should be changed can be used:

```
.background{ background-color: rgb(207,  
175, 169) }
```

This example shows the color as background, it is applied via the CSS property "background".

To optimize and compress your CSS code, you can use our [online CSS compressor and optimizer](#) based on csstidy. If you want to create a linear or radial gradient as background or border, check our [CSS Gradient Generator](#).

Hey! You found this booklet interesting? Support Converting Colors with the new Membership Option!

The pro membership hides all ads, plus gives you double the colors in the color bucket, and more awesome pro features!

[Learn more, Memberships starting at \\$2.50/m!](#)

**Follow me
on Twitter!**

@ConvertingColor