

Converting Colors

YIQ(183.9720, 23.5660, 2.4300)

Have a look what the booklet for
YIQ(183.9720, 23.5660, 2.4300)
contains.

YIQ(183.9720, 23.5660, 2.4300)	3
<i>Conversions</i>	4
<i>Details</i>	6
<i>Harmonies</i>	12
<i>Previews</i>	24
<i>Color Blindness Simulation</i>	28
<i>CSS Examples</i>	31

Color

**YIQ(183.9720, 23.5660,
2.4300)**

Conversions

Conversions Part 1

Format	Color
Hex	D0B0A2
RGB	208, 176, 162
RGB Percent	82%, 69%, 64%
CMY	0.1842, 0.3098, 0.3646
CMYK	0.00, 0.15, 0.22, 0.18
HSL	18°, 33%, 73%
HSV	18°, 22%, 82%
XYZ	48.0639, 47.0673, 40.7465
YIQ	183.9720, 23.5660, 2.4300

Conversions

Conversions Part 2

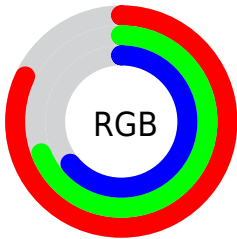
Format	Color
RYB	208, 182, 162
Decimal	13676706
CIELab	74.23, 9.41, 11.45
CIELCh	74, 14.822, 50.569
Yxy	47.0673, 0.3537, 0.3464
Android (android.graphics.Color)	4291866786 (0xFFD0B0A2)
YUV	183.9720, -10.8322, 21.0726
Hunter-Lab	68.6056, 4.9941, 12.8102

Details

The YIQ color $183.9720, 23.5660, 2.4300$ is a light color, and the websafe version is hex $CC9999$. A complement of this color would be $186.0280, -23.5660, -2.4300$, and the grayscale version is $184.0000, 0.0000, -0.0000$.

A 20% lighter version of the original color is $237.1670, 18.5230, 0.2110$, and $130.4880, 22.0530, 2.3170$ is the 20% darker color. If you saturate the color by 10%, you get $173.3600, 34.1570, 3.2210$, and if you desaturate by 10%, it is $194.5840, 12.9750, 1.6390$.

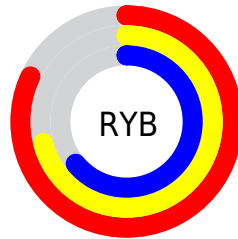
Distribution



Red (82%)

Green (69%)

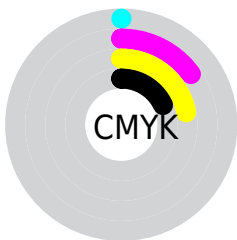
Blue (64%)



Red (82%)

Yellow (71%)

Blue (64%)

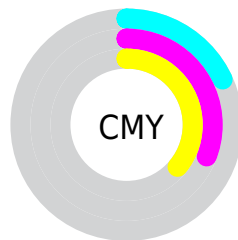


Cyan (0%)

Magenta (15%)

Yellow (22%)

Black (18%)



Cyan (18%)

Magenta (31%)

Yellow (36%)

Brightness & Saturation Gradients

These gradients show how the YIQ color 183.9720, 23.5660, 2.4300 changes by changing the brightness by 10 percent. The first figure shows a shift by +10% for each color and the second figure -10%.

Similar to the brightness gradients but the following saturation gradients show a change of the YIQ color 183.9720, 23.5660, 2.4300 by changing the saturation by 10% instead.

■ 183.9720, 23.5660,
2.4300

■ 183.9720, 23.5660,
2.4300

255.0000, -0.0000,
-0.0000

■ 156.7870, 22.6490,
2.5290

■ 237.1670, 18.5230,
0.2110

■ 130.4880, 22.0530,
2.3170

■ 253.8600, 3.2100,
-3.1100

■ 105.8900, 20.8610,
1.8930

■ 81.4060, 19.3480,
1.7800

■ 58.2210, 18.4310,
1.8790

■ 36.3240, 16.6430,
1.2430

■ 13.6770, 17.1470,

3.1230

0.0000, 0.0000,
0.0000

183.9720, 23.5660,
2.4300

183.9720, 23.5660,
2.4300

173.3600, 34.1570,
3.2210

194.5840, 12.9750,
1.6390

162.1610, 45.0230,
4.5350

205.7830, 2.1090,
0.3250

151.6630, 55.2930,
5.6370

216.2810, -8.1610,
-0.7770

140.4640, 66.1590,
6.9510

227.4800,
-19.0270, -2.0910

129.8520, 76.7500,
7.7420

236.8380,
-26.0870, -6.3030

■ 118.6530, 87.6160,
9.0560

■ 240.9470,
-28.0120, -9.9640

■ 108.0410, 98.2070,
9.8470

■ 99.1730, 106.6430,
11.1470

Harmonies

Analogous

The Analogous color harmony consists of three colors that are next to each other on the color wheel.



185.3620, 22.6480, 8.0560



183.9720, 23.5660, 2.4300



182.6460, 18.4320, -3.6480

Triad

The Triadic color harmony groups three colors that are evenly spaced from another and form a triangle on the color wheel.



183.9720, 23.5660, 2.4300



177.8680, -17.6040, -11.3640



183.7790, -9.2630, 8.1850

Complementary

The Complementary color scheme is a pair of colors which are on the opposite of each other on the color wheel.



183.9720, 23.5660, 2.4300



186.0280, -23.5660, -2.4300

Split Complementary

Split-complementary colors differ from the complementary color scheme. The scheme consists of three colors, the original color and two neighbors of the complement color.



181.1580, -20.8160, 2.8000



183.9720, 23.5660, 2.4300



177.6700, -25.6740, -8.2820

Square

The Square scheme is like the rectangle color scheme, but the four colors are evenly spaced on the color wheel.



183.9720, 23.5660, 2.4300



179.3980, -4.5370, -11.3930



179.2340, -27.1420, -3.7020



184.7160, 4.2160, 11.7040

Rectangle

The Rectangle color scheme consists of four colors that form a rectangle on the color wheel.



183.9720, 23.5660, 2.4300



181.4170, 11.6470, -7.3370



179.2340, -27.1420, -3.7020



182.6860, -13.4350, 6.7010

Sweetspot

The Sweet Spot groups the original color and five complimentary colors.



183.9720, 23.5660, 2.4300



245.9040, 9.0780, 0.6780



179.4020, 17.1440, 19.7040



122.0500, 5.7310, 0.7630



0.0000, 0.0000, 0.0000



128.0000, -0.0000, -0.0000

Same Dimension

The Same Dimension uses a secret algorithm to generate beautiful new colors.



183.9720, 23.5660, 2.4300



218.9580, 35.3490, 3.6450



197.4730, 17.2410, -9.5990



99.0500, 5.7310, 0.7630



80.1690, 86.1030, 8.9430



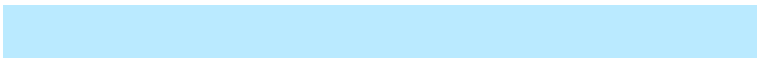
19.3030, 21.1360, 2.4160

Inverse Universe

The Inverse Universe completely reimagines the original color for something new.



186.0280, -23.5660, -2.4300



222.0420, -35.3490, -3.6450



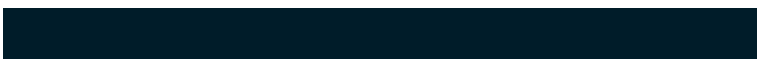
172.5270, -17.2410, 9.5990



99.3630, -5.4560, -0.2400



87.8310, -86.1030, -8.9430



21.1100, -20.8610, -1.8930

Previews

White Background



This preview shows how the YIQ color 183.9720, 23.5660, 2.4300 looks on a white background.

Color Contrast Check

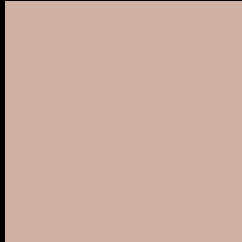
Large Text (above 18pt) WCAG AA × Fail

Any Text WCAG AA × Fail

Large Text (above 18pt) WCAG AAA × Fail

Any Text WCAG AAA × Fail

Black Background



This preview shows how the YIQ color 183.9720, 23.5660, 2.4300 looks on a black background.

Color Contrast Check

Large Text (above 18pt) WCAG AA ✓ Pass

Any Text WCAG AA ✓ Pass

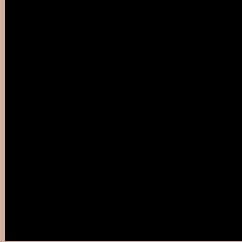
Large Text (above 18pt) WCAG AAA ✓ Pass

Any Text WCAG AAA ✓ Pass

If you want to check with other color combinations, try the [Color Contrast Checker](#).

YIQ 183.9720, 23.5660, 2.4300

Background



This preview shows how black text looks on a background with the YIQ color 183.9720, 23.5660, 2.4300.



This preview shows how white text looks on a background with the YIQ color 183.9720, 23.5660,

2.4300.

Color Blindness Simulation

Color vision deficiency is a very complex topic, and I could not describe the different causes any better than Wikipedia does, so if you want to learn more, you should check out their [article about color blindness](#).

Dichromacy



Original Color

183.9720, 23.5660, 2.4300

Protanopia

182.4540, 10.2250, -3.5910

Deuteranopia

183.9720, 23.5660, 2.4300



Tritanopia

185.2570, 18.7500, 12.6220

Trichromacy



Original Color

183.9720, 23.5660, 2.4300

Protanomaly

183.2590, 15.2680, -1.3720

Deuteranomaly

183.9720, 23.5660, 2.4300

Tritanomaly

184.5190, 20.7680, 9.0880

Monochromacy



Original Color

183.9720, 23.5660, 2.4300

Achromatopsia

184.0000, 0.0000, -0.0000

Achromatomaly

184.0180, 8.7570, 0.9890

CSS Examples

Text

The CSS property to change the color of the text to YIQ 183.9720, 23.5660, 2.4300 is called "color". The color property can be set on classes, ids or directly on the HTML element.

This example shows how text in the color `rgb(208, 176, 162)` looks like.

```
.text, #text, p{  
    color:rgb(208, 176, 162)  
}
```

If you want to add a text shadow in that color use the text-shadow property, you can generate a text shadow directly with our [CSS Text Shadow Generator](#).

Here you see how black text with a 4 pixel rgb(208, 176, 162) colored shadow looks like.

```
.shadow{ text-shadow: 4px 4px 2px rgb(208, 176, 162) }
```

Border

The CSS property to change the border of an element to YIQ 183.9720, 23.5660, 2.4300 is called "border". The border property can be set on classes, ids or directly on the HTML element.

This example shows the color as border, it can be applied via the CSS property "border" or "border-color".

```
.border, #border, table{ border:4px solid rgb(208, 176, 162) }
```


If only the border color should be changed use the property `border-color`.

```
.border{ border-color:rgb(208, 176, 162) }
```

If you want to add a box shadow in that color use:

Here you see how a box with a 4 pixel `rgb(208, 176, 162)` colored shadow looks like.

```
.boxshadow{ -moz-box-shadow:4px 4px 4px  
4px rgb(208, 176, 162); -webkit-box-  
shadow:4px 4px 4px 4px rgb(208, 176, 162);  
box-shadow:4px 4px 4px 4px rgb(208, 176,  
162) }
```

Background

The CSS property to change the background color of an element to YIQ 183.9720, 23.5660, 2.4300 is called "background". The background property can be set on classes, ids or directly on the HTML element.

```
.background, #background, body{  
background: rgb(208, 176, 162) }
```

If only the background color should be changed can be used:

```
.background{ background-color: rgb(208,  
176, 162) }
```

This example shows the color as background, it is applied via the CSS property "background".

To optimize and compress your CSS code, you can use our [online CSS compressor and optimizer](#) based on csstidy. If you want to create a linear or radial gradient as background or border, check our [CSS Gradient Generator](#).

Hey! You found this booklet interesting? Support Converting Colors with the new Membership Option!

The pro membership hides all ads, plus gives you double the colors in the color bucket, and more awesome pro features!

[Learn more, Memberships starting at \\$2.50/m!](#)

**Follow me
on Twitter!**

@ConvertingColor