

Converting Colors

YIQ(184.5470, 14.3970, -2.1070)

Have a look what the booklet for
YIQ(184.5470, 14.3970, -2.1070)
contains.

YIQ(184.5470, 14.3970, -2.1070)	3
<i>Conversions</i>	4
<i>Details</i>	6
<i>Harmonies</i>	12
<i>Previews</i>	24
<i>Color Blindness Simulation</i>	28
<i>CSS Examples</i>	31

Color

**YIQ(184.5470, 14.3970,
-2.1070)**

Conversions

Conversions Part 1

Format	Color
Hex	C5B6A5
RGB	197, 182, 165
RGB Percent	77%, 71%, 65%
CMY	0.2274, 0.2863, 0.3529
CMYK	0.00, 0.08, 0.16, 0.23
HSL	32°, 22%, 71%
HSV	32°, 16%, 77%
XYZ	46.5474, 48.0417, 42.4255
YIQ	184.5470, 14.3970, -2.1070

Conversions

Conversions Part 2

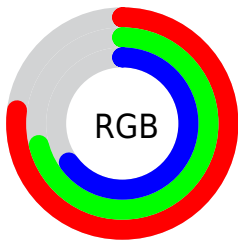
Format	Color
RYB	193, 197, 165
Decimal	12957349
CIELab	74.85, 2.51, 10.56
CIElCh	75, 10.857, 76.609
Yxy	48.0417, 0.3397, 0.3506
Android (android.graphics.Color)	4291147429 (0xFFC5B6A5)
YUV	184.5470, -9.6367, 10.9213
Hunter-Lab	69.3122, -1.4223, 12.2275

Details

The YIQ color **184.5470, 14.3970, -2.1070** is a light color, and the websafe version is hex **CCCCCC**. A complement of this color would be **177.4530, -14.3970, 2.1070**, and the grayscale version is **185.0000, -0.0000, -0.0000**.

A 20% lighter version of the original color is **240.7320, 15.3140, -2.2060**, and **131.3620, 13.4800, -2.0080** is the 20% darker color. If you saturate the color by 10%, you get **176.9840, 23.2920, -3.6200**, and if you desaturate by 10%, it is **192.1100, 5.5020, -0.5940**.

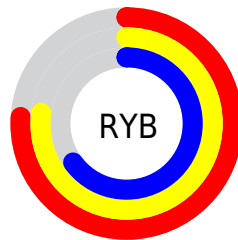
Distribution



Red (77%)

Green (71%)

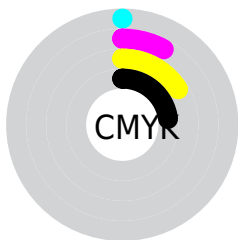
Blue (65%)



Red (76%)

Yellow (77%)

Blue (65%)

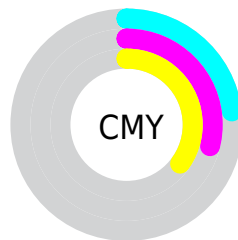


Cyan (0%)

Magenta (8%)

Yellow (16%)

Black (23%)



Cyan (23%)


Magenta (29%)


Yellow (35%)

Brightness & Saturation Gradients


These gradients show how the YIQ color 184.5470, 14.3970, -2.1070 changes by changing the brightness by 10 percent. The first figure shows a shift by +10% for each color and the second figure -10%.


Similar to the brightness gradients but the following saturation gradients show a change of the YIQ color 184.5470, 14.3970, -2.1070 by changing the saturation by 10% instead.


 184.5470, 14.3970,
-2.1070


 184.5470, 14.3970,
-2.1070


255.0000, -0.0000,
-0.0000


 157.6610, 14.0760,
-1.7960


 240.7320, 15.3140,
-2.2060


 131.3620, 13.4800,
-2.0080

 254.3160, 1.9260,
-1.8660

 106.1770, 12.5630,
-1.9090

 81.8780, 11.9670,
-2.1210

 58.9920, 11.6460,
-1.8100

 37.5080, 10.1330,
-1.9230

 15.9920, 11.6460,

-1.8100

■ 0.0000, 0.0000,
0.0000

■ 184.5470, 14.3970,
-2.1070

■ 184.5470, 14.3970,
-2.1070

■ 176.9840, 23.2920,
-3.6200

■ 192.1100, 5.5020,
-0.5940

■ 169.5350, 31.8660,
-4.8220

■ 199.5590, -3.0720,
0.6080

■ 161.3850, 41.0360,
-5.8120

■ 207.7090,
-12.2420, 1.5980

■ 153.8220, 49.9310,
-7.3250

■ 215.2720,
-21.1370, 3.1110

■ 146.3730, 58.5050,
-8.5270

■ 221.8090,
-27.1430, 1.8250

■ 138.8100, 67.4000,
-10.0400

■ 227.0920,
-29.6180, -2.8820

■ 130.6600, 76.5700,
-11.0300

■ 232.9620,
-32.3680, -8.1120

■ 123.0970, 85.4650,
-12.5430

■ 237.6580,
-34.5680, -12.2960

■ 120.5380, 88.5370,
-13.1510

Harmonies

Analogous

The Analogous color harmony consists of three colors that are next to each other on the color wheel.



185.4490, 17.7890, 2.5010



184.5470, 14.3970, -2.1070



183.3180, 7.6120, -5.7960

Triad

The Triadic color harmony groups three colors that are evenly spaced from another and form a triangle on the color wheel.



184.5470, 14.3970, -2.1070



180.9160, -17.5590, -6.6710



185.9390, 1.9700, 8.3540

Complementary

The Complementary color scheme is a pair of colors which are on the opposite of each other on the color wheel.



184.5470, 14.3970, -2.1070



177.4530, -14.3970, 2.1070

Split Complementary

Split-complementary colors differ from the complementary color scheme. The scheme consists of three colors, the original color and two neighbors of the complement color.



184.6820, -7.6120, 5.7960



184.5470, 14.3970, -2.1070



181.6540, -19.5770, -3.1370

Square

The Square scheme is like the rectangle color scheme, but the four colors are evenly spaced on the color wheel.



184.5470, 14.3970, -2.1070



181.2710, -11.3690, -8.7210



182.8550, -15.5890, 1.6830



186.4300, 10.7730, 8.5090

Rectangle

The Rectangle color scheme consists of four colors that form a rectangle on the color wheel.



184.5470, 14.3970, -2.1070



182.4420, 1.3310, -7.6050



182.8550, -15.5890, 1.6830



185.5580, -1.3310, 7.6050

Sweetspot

The Sweet Spot groups the original color and five complimentary colors.



184.5470, 14.3970, -2.1070



249.9960, 5.8230, -0.9050



176.2780, 14.2570, 11.4490



124.7400, 3.6680, -0.3960



0.0000, 0.0000, 0.0000



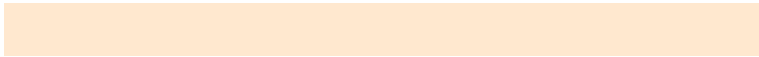
128.0000, -0.0000, -0.0000

Same Dimension

The Same Dimension uses a secret algorithm to generate beautiful new colors.



184.5470, 14.3970, -2.1070



236.0270, 21.7330, -2.8990



193.0530, 9.6760, -10.1640



95.6260, 3.9890, -0.7070



99.8060, 73.2230, -10.9450



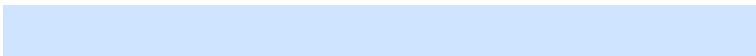
21.9170, 16.2310, -2.3050

Inverse Universe

The Inverse Universe completely reimagines the original color for something new.



177.4530, -14.3970, 2.1070



225.3860, -21.4580, 3.4220



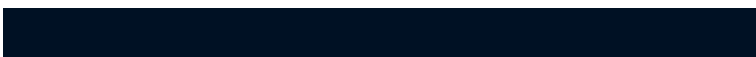
168.9470, -9.6760, 10.1640



93.3740, -3.9890, 0.7070



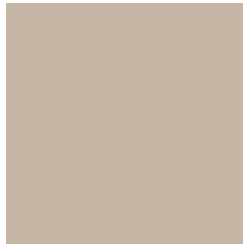
63.7810, -73.4980, 10.4220



14.0830, -16.2310, 2.3050

Previews

White Background



This preview shows how the YIQ color 184.5470, 14.3970, -2.1070 looks on a white background.

Color Contrast Check

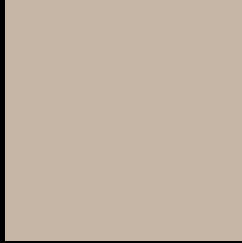
Large Text (above 18pt) WCAG AA × Fail

Any Text WCAG AA × Fail

Large Text (above 18pt) WCAG AAA × Fail

Any Text WCAG AAA × Fail

Black Background



This preview shows how the YIQ color 184.5470, 14.3970, -2.1070 looks on a black background.

Color Contrast Check

Large Text (above 18pt) WCAG AA ✓ Pass

Any Text WCAG AA ✓ Pass

Large Text (above 18pt) WCAG AAA ✓ Pass

Any Text WCAG AAA ✓ Pass

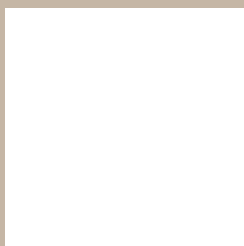
If you want to check with other color combinations, try the [Color Contrast Checker](#).

YIQ 184.5470, 14.3970, -2.1070

Background



This preview shows how black text looks on a background with the YIQ color 184.5470, 14.3970, -2.1070.



This preview shows how white text looks on a background with the YIQ color 184.5470, 14.3970,

-2.1070.

Color Blindness Simulation

Color vision deficiency is a very complex topic, and I could not describe the different causes any better than Wikipedia does, so if you want to learn more, you should check out their [article about color blindness](#).

Dichromacy



Original Color

184.5470, 14.3970, -2.1070

Protanopia

184.3400, 10.5460, -3.9020

Deuteranopia

185.9010, 22.3280, 2.8400



Tritanopia

186.4730, 9.2140, 9.2300

Trichromacy



Original Color

184.5470, 14.3970, -2.1070

Protanomaly

184.3510, 12.0130, -2.9550

Deuteranomaly

185.2920, 19.6690, 1.4690

Tritanomaly

185.6210, 11.5530, 5.3850

Monochromacy



Original Color

184.5470, 14.3970, -2.1070

Achromatopsia

185.0000, -0.0000, -0.0000

Achromatomaly

184.8110, 4.9060, -0.8060

CSS Examples

Text

The CSS property to change the color of the text to YIQ 184.5470, 14.3970, -2.1070 is called "color". The color property can be set on classes, ids or directly on the HTML element.

This example shows how text in the color `rgb(197, 182, 165)` looks like.

```
.text, #text, p{  
    color:rgb(197, 182, 165)  
}
```

If you want to add a text shadow in that color use the text-shadow property, you can generate a text shadow directly with our [CSS Text Shadow Generator](#).

Here you see how black text with a 4 pixel rgb(197, 182, 165) colored shadow looks like.

```
.shadow{ text-shadow: 4px 4px 2px rgb(197, 182, 165) }
```

Border

The CSS property to change the border of an element to YIQ 184.5470, 14.3970, -2.1070 is called "border". The border property can be set on classes, ids or directly on the HTML element.

This example shows the color as border, it can be applied via the CSS property "border" or "border-color".

```
.border, #border, table{ border:4px solid rgb(197, 182, 165) }
```


If only the border color should be changed use the property `border-color`.

```
.border{ border-color:rgb(197, 182, 165) }
```

If you want to add a box shadow in that color use:

Here you see how a box with a 4 pixel `rgb(197, 182, 165)` colored shadow looks like.

```
.boxshadow{ -moz-box-shadow:4px 4px 4px  
4px rgb(197, 182, 165); -webkit-box-  
shadow:4px 4px 4px 4px rgb(197, 182, 165);  
box-shadow:4px 4px 4px 4px rgb(197, 182,  
165) }
```

Background

The CSS property to change the background color of an element to YIQ 184.5470, 14.3970, -2.1070 is called "background". The background property can be set on classes, ids or directly on the HTML element.

```
.background, #background, body{  
background: rgb(197, 182, 165) }
```

If only the background color should be changed can be used:

```
.background{ background-color: rgb(197,  
182, 165) }
```

This example shows the color as background, it is applied via the CSS property "background".

To optimize and compress your CSS code, you can use our [online CSS compressor and optimizer](#) based on csstidy. If you want to create a linear or radial gradient as background or border, check our [CSS Gradient Generator](#).

Hey! You found this booklet interesting? Support Converting Colors with the new Membership Option!

The pro membership hides all ads, plus gives you double the colors in the color bucket, and more awesome pro features!

[Learn more, Memberships starting at \\$2.50/m!](#)

**Follow me
on Twitter!**

@ConvertingColor